

# Poole's Medley

BY D. SCOTT POOLE

Sunday, April 17th, was Easter. Next year Easter will come on April 9th, and in 1951 will come on March 25.

Some people think an early Easter means an early spring, but I do not recall an early Easter that was not a cool late spring.

But old people used to say there usually was a cool spell just before Easter, or just after. More than likely we have it cool before

and after. On the 26th of April, 1872, there came a killing frost. Corn was about like it is now and it was killed, but it came out

There are wet years when crops do not do well, and dry years when crops suffer for rain, but I have noticed that nitrate of soda prevents so much damage by drought.

Both law and common sense requires every man to be just before he is liberal. Pay your debts before you give away anything.

Alcoholic liquors will destroy this great country of ours, sure

as you are living, and legal liquor is the chief destroyer.

Toward the close of the General Assembly session of 1925, at a night session with the late Lt. Governor acting as Speaker, the House passed one hundred, some two readings, in one hour. I never knew anything like that at any other time.

Experience keeps a dear school, but some people learn in no other still everybody should value experience. Much depends on experience.

There are evidences of a prospective religious awakening, and also a world wide uprising of Satan and his hosts. Communism saturates humanity to no little degree.

Communism is a flat denial of Christianity. They say religion is Enemy No. 1. The truth is, but for religion, humanity, of all creatures, is the most miserable.

You doubtless will recall the saying, "Divide your joys and they increase, share your troubles and they decrease." People shared both their troubles and joys during the Civil War.

After we had finished planting our crops, father sent John and myself down to Aunt Nancy Ray's, where we replanted her crop. When a neighbor was taken sick, and was unable to plow, we would give him a days plowing, and so his crop was cultivated.

There were no fresh meat markets in those days, so when we killed a small beef, or a mutton, we let our neighbors have some. The next week, when one would kill a beef, they would repay us.

They had a way of adjusting the weights. Another neighborly kindness was in lending tools and anything else a man wanted and needed.

I was impressed in my youth of the sense of honesty most of our neighbors showed. They wanted a square deal, and they gave the same.

Raeford Institute, which opened in 1895, had four rooms, and an auditorium on the second floor. The first school building was destroyed by fire, which some thought was of incendiary origin, but there was only circumstantial evidence.

It Pays To Advertise

## High Employment Record Reached

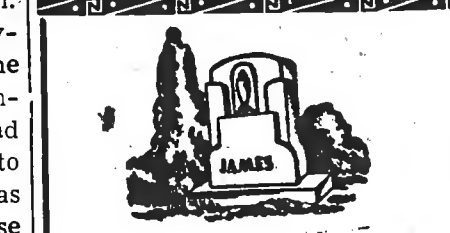
Raleigh, Apr. 22—An all-time high in non-agricultural employment in North Carolina was reached in the third quarter of 1948, in which the average employment covered by the State's Employment Security Law reached 651,369 workers, a net gain of 5.52 percent, or 34,080 workers in the third quarter of 1947. A decline of 43c in the average weekly wage, from \$41.90 in the second quarter to \$41.47 in the third quarter, is shown.

These figures are included in the quarterly report of Hugh M. Raper, director of the Bureau of Research and Statistics, to Henry E. Kendall, chairman of the Employment Security Commission. Even with the decline in employment in the past few months, the conclusion is reached that employment now is as high as it had ever been in the State prior to 1948. The third quarter gain was attributed in part to the increase in seasonal employment in processing leaf tobacco, to which is also attributed, in part, the decline in average weekly wage.

In the 25 Mountain counties average employment declined less than one percent (.073) from the second quarter. In manufacture

the decline was 2.79 percent, but this was largely absorbed by gains in the service group. In 36 counties of the Piedmont area employment increased 1.75 per cent, while in manufacture the increase was only 0.3 per cent. In the Coastal area the gain was 7.43 percent over the second quarter, due almost entirely to seasonal tobacco operations.

Construction employment reached its post-war peak in the third quarter of 1948, 8.18 per cent above the second quarter. Manufacture showed a decline of 1.16 from the second quarter. Transportation, communication and public utilities reached an all-time high, while trade and finance, insurance and real estate showed substantial gains. Service industries gained slightly.



**Southern Marble Works**  
Lumberton, N. C.  
Get our prices before buying your monument.

# Tobacco Farmers

WE HAVE ON HAND

Galvanized Roofing - Nails

Tobacco Barn Stokers

Tobacco Transplanters

Tobacco Dusters

Tobacco Sprayers

GET THEM TODAY

**RAEFORD HARDWARE CO.**

PHONE 262-1

RAEFORD, N. C.

**N. McNair Smith**  
ATTORNEY AT LAW  
General Practice

We have an attractive price on

## YELNANDO SOY BEANS

Cleaned — 1 year from Coker — High Germination

This is a nexcellent hay bean, and is one of the best of the non-shatter types.

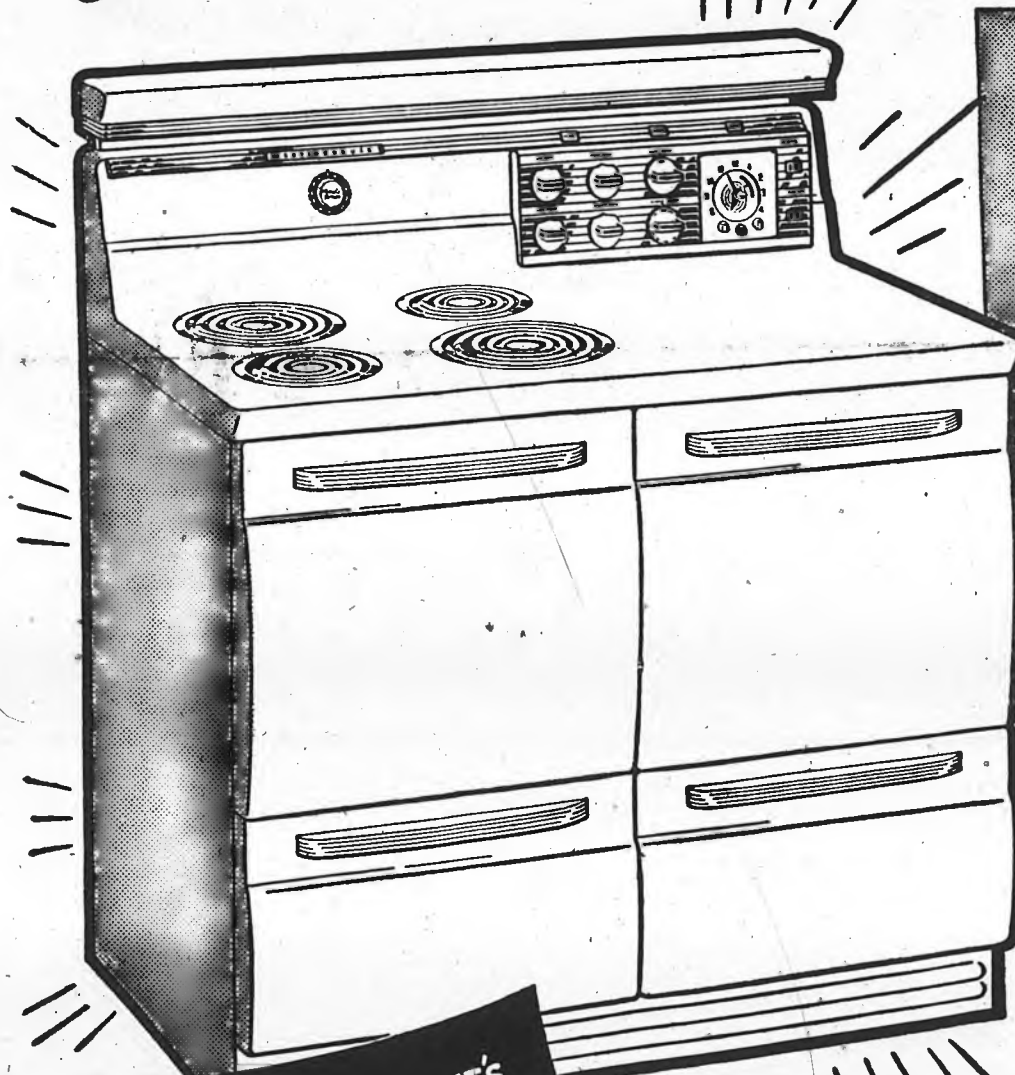
## THE JOHNSON COMPANY

RAEFORD, N. C.

In a recent test of hundreds of people who smoked only Camels for 30 days, noted throat specialists, making weekly examinations, reported

*Not one single case of throat irritation due to smoking Camels!*

# LOOK IT'S HERE!



*Big*  
**THE NEW**  
Westinghouse  
*Electric Range*

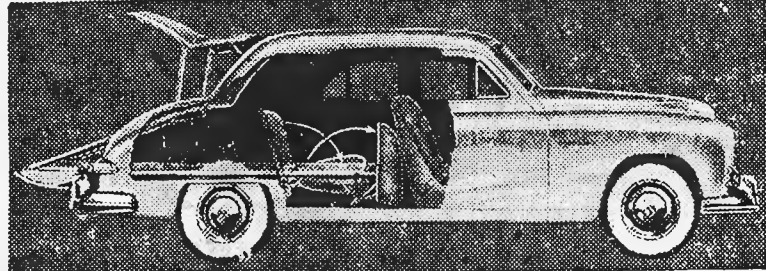
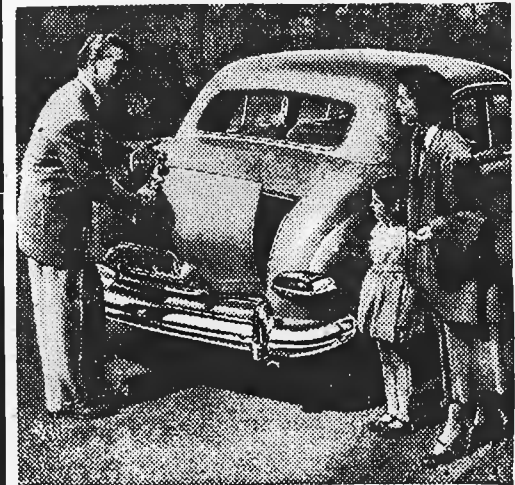
*BEST LOOKING!*  
*BEST COOKING!*

Styled to beautify your kitchen—the last word in surer, easier cooking! You'll thrill at the New Westinghouse Look of massive magnificence . . . representing the finest in modern cooking!

**YOU CAN BE SURE...IF IT'S Westinghouse**

**SO FINE! SO FAST! SO SURE!**

## New K-F "Traveler" Is Two Cars In One



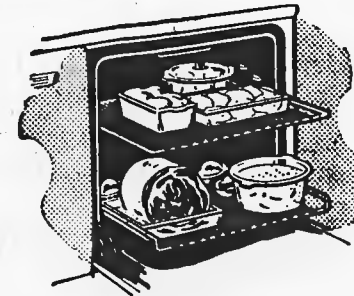
SOMETHING NEW in the automobile industry is the "Traveler," a lower-priced '49 multi-purpose sedan being introduced by Kaiser-Frazer dealers. To all appearances it is a conventional four-door model. But the rear seat cushions fold away and the entire back opens to provide access to more than 130 cubic feet of cargo space. When not in use as a carry-all, the "Traveler" is a deluxe, six-passenger family sedan. The cutaway-view shows how the seat cushions and hinged rear panels function.

**Immediate Delivery**  
**Price \$2199<sup>00</sup>**

**Morgan Motor Co.**

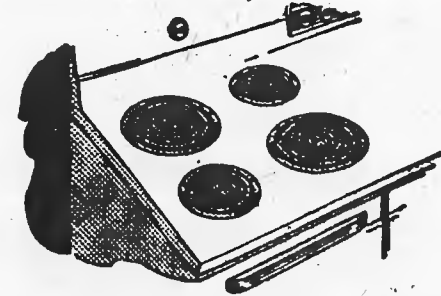
### NEW! SUPER-SIZE MIRACLE OVEN

Cooks food in any rack position!  
New spaciousness! New speed!  
New perfect heat circulation!



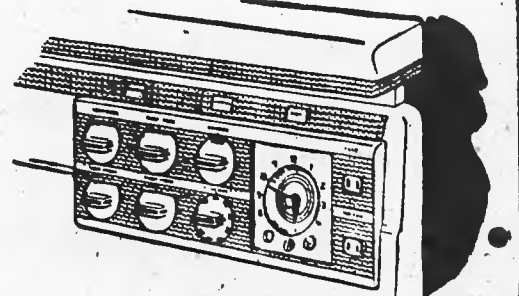
### NEW! SURFACE COOKING CAPACITY

Bonus working space between Units!  
4 full-size Corox Units! New room for large utensils!



### NEW! SIMPLIFIED COOKING CONTROLS

Out of the Steam Zone!  
Best Cooking Tei-A-Glance Switches and Single Dial Oven Control!



**SEE THIS STARTLING, NEW, SIMPLIFIED RANGE BY Westinghouse**

**Dundarrach Trading Company**