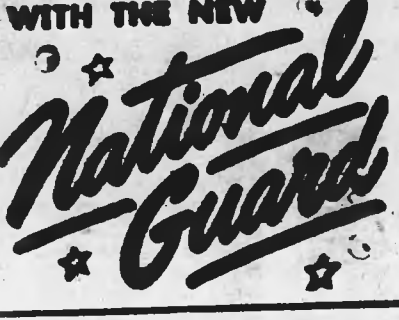


Farming

All of North Carolina's 100 counties except 10 are now organized in soil conservation districts.

Forestry specialists at State College report that large areas of pine forests in southeastern North Carolina are being attacked by

LEARN AND EARN IN YOUR SPARE TIME WITH THE NEW



CONTROLLED COTTON-PLANTING with



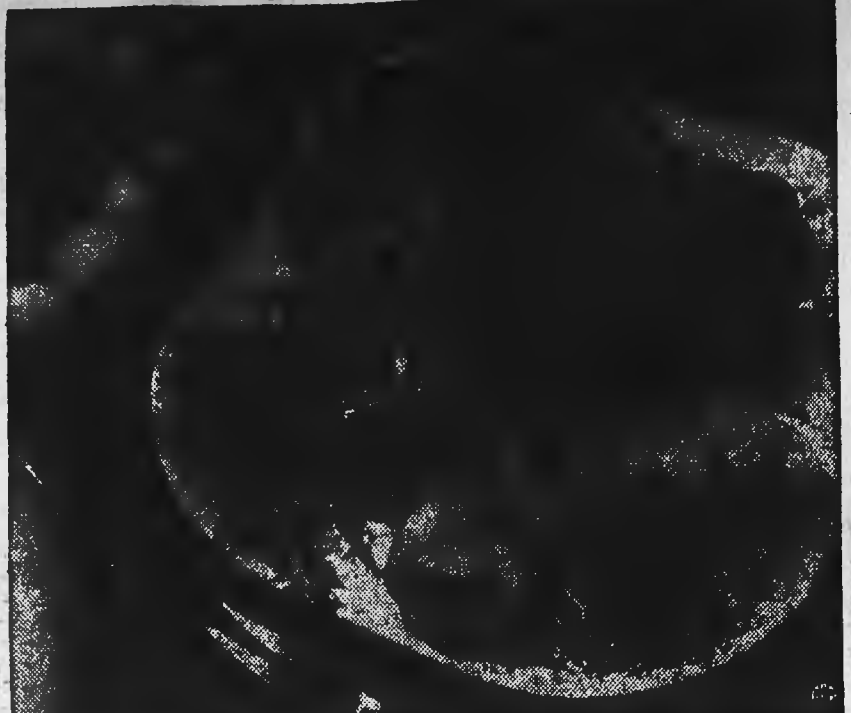
SINKERS COTTON-SEED is easier to haul, handle, and plant; feeds through corn-planters accurately.

SINKERS eliminates clods, skips, and misses; plants to a stand—thick or thin to suit soil conditions—without thinning or chopping.

SINKERS cost less to plant. Use only 1/4 the amount you do of fuzzy seed.

The Johnson Co. Raeford, N. C.

(Get in the Swing of Spring) With Jellied Chicken Loaf



When you want to serve chicken salad in a festive atmosphere, combine it with pineapple in a molded chicken loaf as delicious as it is different.

Molded Chicken Loaf With Pineapple
1 envelope unflavored gelatine
1/2 cup cold chicken stock or bouillon
1/2 cup hot chicken stock or bouillon
1/2 teaspoon salt

southern pine beetles. The attack has reached epidemic proportions and the damage may become severe this summer.

MONROE DEATHS

Funerals for the late Mrs. Lila Monroe were held Saturday afternoon at St. Pauls church with the pastor, Rev. Robert Poole, officiating.

HANOVER SCHOOL FACULTY

Hanover school faculty in Wilmington until last December, when she resigned due to illness.

SCHOOL NEWS

King made the highest 4 year grades and will be valedictorian of her class.

COLORED SCHOOL NEWS

Eighteen boys and two instructors from the Upchurch agricultural department went to Proctorville last week for the NFA district contests.

CLASSIFIED AD SECTION

RATES
Maximum 15 words, on insertion 30c
Each additional word 2c
Five or more insertions without change 5c less per issue.

IF YOU ARE INTERESTED IN USED Electric Refrigerator, Electric Range, Ice Boxes, etc., see BAUCOM APPLIANCE CO. 47

FOR SALE: Used shallow well water pump and tank. BAUCOM APPLIANCE CO. 47

MALE HELP WANTED: Due to expansion we need two more men to call on farmers. Experience not necessary.

FOR SALE: Tomato plants, Marglobes, Stones, Brimmer, Spartas, Earliana. D. R. Johns. 47P

FOR SALE: Four room house and lot 81x212 ft. on Aberdeen Highway near the old Robbins Mill at Raeford, N. C. Phone 5976 from 5:30 till 9:30 p.m. 47P

FOR SALE: Lespedeza Hay. Stanley Crawley, Arabia. 47P

Visit our greenhouse for potting needs. Rooting and cutting pots and prepared soil plants for your flower garden.

Haviland China. New shipment in Apple Blossom pattern. 10-inch dinner plates, cups and saucers. Graham's Gift Shop. 47C

See our line of infant wear. Slips, dresses, T-shirts, shorts, bonnets, caps, etc. Graham's Gift Shop. 47C

FOR SALE OR TRADE: Mauer Rifle - caliber 8 mm - sport model. O. B. Covington, Route 1, Red Springs. 47-50P

FOR SALE: Certified coker - 100 wilt cottonseed - High Germinalton. T. B. Upchurch, Inc. 47C

FOR SALE: One nice milk cow. N. A. McNeill. 47P

House Trailer for rent: See Charles Davis at Kinlaw Jewelry Store. 47P

FOR RENT: Two room furnished apartment. Mrs. Leon Throver. 47P

CARD OF THANKS
We would like to take this opportunity to thank our many friends for their acts of kindness and sympathy during our recent bereavement.

The family of Mrs. E. M. Smith.

game, furnishing five players for the Hoke-Robeson team that played the other counties in the district. They won the game 6 to 2.

The 18 boys entered all contests except the speaking event. The boy who was to speak had to remain at Upchurch as he was entered in the Peace speaking contest held at the school that day.

The Upchurch trades department is making an effort to add an additional bricklaying teacher to the staff in order to take care of the applications for admission to this course.

Pre-school clinic will be held at Upchurch on Wednesday, April 25th at 9:00 a. m.

Notice Of Special Bond Election and Supplemental Registration in the County Of Hoke, North Carolina

A special bond election will be held throughout Hoke County between 6:30 A. M. and 6:30 P. M., Eastern Standard Time, on Monday, May 7, 1951, at which there will be submitted to the qualified voters of said County the following question:

Shall an order finally passed April 2, 1951, authorizing not exceeding \$275,000 School Building Bonds of the County of Hoke for the purpose of providing funds for erecting and equipping additions to two existing school buildings and, with other funds available therefor, for erecting and equipping an additional school building, and a tax for said bonds, be approved?

The order referred to above authorizes School Building Bonds of Hoke County in an aggregate principal amount not exceeding \$275,000 for the purpose of providing funds for erecting and equipping additions to two existing school buildings and, with other funds available therefor, for erecting and equipping an additional school building, in order to maintain the six months' school term in Hoke County as required by the Constitution, such school improvement.

For said election the regular registration books for elections in said County will be used, and such books will be open for the registration of voters, not theretofore registered, from 9 A. M. until sunset on each day beginning Saturday, April 14, 1951 and closing Saturday, April 28, 1951. On each Saturday during such registration period said books will be open at the polling places. Saturday, May 5, 1951 is Challenge Day.

The polling places in the several precincts and the registrars and judges for each precinct are as follows:

Table with columns: Precincts, Polling Places, Registrars, Judges. Lists various precincts like Antioch, Allendale, Ashemont, etc.

J. E. Gullede, Clerk of Board of Commissioners. G. B. Rowland, Chairman of County Board of Elections. 45-47C

acres near head of prong or Undermine branch, and runs as old line S 3 degrees W 8.50 chs. to a stake thence S 87 degrees E 17.65 chs. to a stake; thence as it N 3 degrees E 8.50 chs. to a stake in old line; thence as old line N 87 degrees W 17.65 chs. to the beginning, containing 15 acres, more or less. (2nd tract) Known as Martha Kelly lot, and runs as that line N 87 degrees W 5.68 chs. to a stake; thence S 3 degrees W 6.82 chs. to a stake in head of branch; thence S 87 degrees E 4.13 chs. to a stake in Johnsonville road; thence as it direct to the beginning, containing 3.34 acres, more or less. For further reference see Books No. 83 and 90 at pages 200 and 621 of Hoke county registry. Posted 3-26-51. Arthur D. Gore, Commissioner. 44-47C

POULTRY WANTED

Our truck will be in Raeford, N. C. from 11:00 A. M. till 12:00 Noon, Friday, April 20, nead depot.

CASH PRICES
HEAVY HENS 27c lb.
BRING ALL YOU HAVE TO SELL

LEE POULTRY CO.

SANFORD, N. C.

NEW CARPENTER SHOP

We have opened up a general Carpenter Shop at the old home of B. P. Robinson, now owned by Ed Smith, one and one half miles from Raeford on 15-A.

Screen doors, window screens, window and door frames and cabinets made to order.

Picture framing, furniture repair and saw filing. Saws can be left at Raeford Hardware Co.

E. M. and Ed Smith, Owners

E. M. SMITH, Manager

WEDNESDAY thru SATURDAY APRIL 18-19-20-21

Rexall Original One Cent Sale

The greatest money-saving drug store event in the nation!

As Advertised in LIFE • POST • LOOK • COLLIER'S • FARM JOURNAL and on the REXALL RADIO SHOW starring AMOS 'N' ANDY—Sundays • CBS

Grid of 19 more buys 2 SUPER VALUES. Includes Aspirin, Rubbing Alcohol, Pond Paper, etc.

MONEY SAVERS

Grid of money savers including Tooth Paste, Facial Tissues, Bridge Cards, etc.

Collins Department Store

Dear Editor:

... the letters start. Then many readers of THE CHRISTIAN SCIENCE MONITOR tell the Editor how much they enjoy this daily world-wide newspaper.

"The Monitor is the most carefully edited newspaper in the U. S. . . . Valuable aid in teaching . . . News that is complete and fair. . . . The Monitor surely is a reader's necessity . . ."

You, too, will find the Monitor informative, with complete world news . . . and as necessary as your HOME TOWN paper.

Use this coupon for a Special Introductory subscription—26 ISSUES FOR ONLY \$1—And on Tuesday nights over ABC stations to The Christian Science Monitor Views the News."

The Christian Science Monitor One, Norway St., Boston 15, Mass., U.S.A. Please send me an introductory subscription to The Christian Science Monitor—26 issues. I enclose \$1.

(name) (address) (city) (zone) (state) ZIP

FOR SALE

ANTIQUES, CHINA, BRIC-BRAC, LAMPS, FURNITURE AND ETC. 9 A. M., MONDAY, APRIL 23

SANDERS FURNITURE CO.

RED SPRINGS, N. C.

NOTICE OF DODGE TRUCK SALE

At the Lentz Funeral Home in Raeford, North Carolina at the hour of 2:30 P. M. on the 25th day April, 1951, (which is Wednesday) I will offer for sale at auction to the highest bidder one Dodge Half-Ton 1949 Pick-Up Truck, with motor number "T142-104225" belonging to the estate of Hughes Jones, deceased.

NOTICE

At 12 o'clock, noon, of April 26th, 1951, at the courthouse door in Raeford, N. C. I will offer for sale to the highest bidder for cash the following land:

In Little River Township, Hoke County, N. C., (1st tract) BEGINNING at a pine stump at NW corner of Wm. Calvin's grant for 200