

CONTEST MATCHES 139 TOWNS FOR RACE CAROLINA'S FINEST

Raleigh, April 2—Over 130 towns are bidding for the titles of "Carolina's Finest" in the community development contest sponsored by Carolina Power and Light Company.

"Helping to build a finer Carolina" is the contest theme.

To stimulate interest, Carolina Power and Light Company has offered \$8,750 in prizes to winning towns for improvements made during the 12 months ending November 1.

Three population groups will

compete for three sets of prizes, \$1,000 each for winners and \$750 each for runner-up. The first group includes towns of 1,000 or less; the second, towns of 1,001 to 2,500; and third, towns above 2,500. In addition, state prizes of \$1,000 each will go to North Carolina's "finest" and to South Carolina's "finest".

All 340 communities whose electricity is served at retail by Carolina Power and Light Company were eligible to enter.

Projects undertaken are both varied and ambitious. They include improvements of streets, highways and sidewalks; water and sewer systems; parks, swimming pools, community and club buildings and other recreational facilities; church, schools and college properties; health and medical facilities; and agricultural and industrial promotion. Three towns are seeking the services of doctors, three hope to install telephone exchanges; and others plan to provide free parking lots and public rest rooms. Some projects involve heavy costs.

Asheville plans to complete an amphitheatre on Beaucatcher Mountain with 2,400 seats by July for the opening of an outdoor drama, "Thunderhead," depicting the exploits of Daniel Boone.

Carolina Beach plans to erect a convention hall capable of seating 5,000 people.

"The spirited competition is gratifying," commented E. N. Pope, advertising director for CP&L and organizer of the contest.

"The reawakened interest in community improvement will mean untold benefit throughout the territory. Every community and every individual participating in the program stands to gain."

Stiffest competition is expected among the smallest towns, which account for the largest group of entries. Competing for these awards are 54 towns.

There are 49 towns of 1,001 to 2,500 population competing, in-

GARDEN TIME

The more thorough the preparation of the soil in the garden plot the easier it will be to take care of the crops during the growing season. Manure or cover crops should be well turned and cut into the soil. The plowing should not be done when the soil is too wet, especially in clay soils, or the soils may be "cloddy" for the rest of the season. As fine a seed bed as possible should be prepared for the sowing of small seeds.

Most vegetables do best in a soil reaction which is slightly acid—a pH of 6.5. If your soil is lower than a pH 6, enough lime should be added to bring it up to that point. Crops such as Irish potatoes, sweet potatoes, snap beans, tomatoes, watermelons, cabbage, mustard, and corn are quite tolerant of acid soils. On the other hand, such crops as asparagus, spinach, muskmelon, lettuce, celery, onions, beets, chard, cauliflower, and New Zealand spinach are not tolerant of acid soils and the soils should be brought up to a pH of 6 for these crops.

How deep should seed be planted? That is determined by several factors, of which the most important are size of seed, type of soil, moisture in the soil, and temperature or time of the year. It is sometimes said that seed should be planted to a depth of four times the diameter of the seed. That might not always be an accurate measure, but it is along the right direction. For instance, beans are usually planted from 1 to 1½ inches deep, while turnips are planted about ¼ inch deep. In clay soils seed should not be planted as deep as in sandy soils. In dry soils seed should be planted deeper than in moist soils. Lastly, in the summer when the soil is warm, seed may be planted deeper than in the spring or fall when the soil is cold.

In any case see that the soil is firmed over the seed. The back of a rake is a good tool for this job. It firms the soil without packing the surface.

cluding Raeford, and 36 over 2,500.

GRAHAM'S

EASTER PARADE OF FASHIONS

Pre-EASTER SALE of - - Suits, Toppers and Coats

Usually These Reductions Are Made After Easter

Suit Prices Begin at \$19.95

Topper Prices Begin at \$12.95

Attractive group of Early Spring

Dresses reduced for this Easter Sale

Hats in a large choice of Styles, Sizes and Colors - Prices Beginning at \$1.98

Accessories For Every Outfit at Prices

to suit Every Purse—

Gloves, Bags, Flowers, Veils, Jewelry

And Many Other Items

Our Children's Department Is Ready To Help With Last Minute Needs.

GRAHAM'S

DEPARTMENT STORE, INC.
RED SPRINGS, N. C.

"My FARM BUREAU AUTO INSURANCE savings paid for our vacation gas!"



Join over a million city and country drivers making real savings in insurance costs through Farm Bureau. Standard, non-assignable, across-the-board protection. Prompt nation-wide claims service, automatic renewal. Compare our rates with any. Call -

J. W. Canaday

605 N. Stewart St.
Business Phone 8748
Residence Phone 6576



Can America escape socialism?



SOME NATIONS COULDN'T. And there are people in this country who are trying to push America down the same road.

They don't speak out for socialism openly—they know most Americans don't want it. Instead, they give persuasive reasons for the steps that lead to socialism.

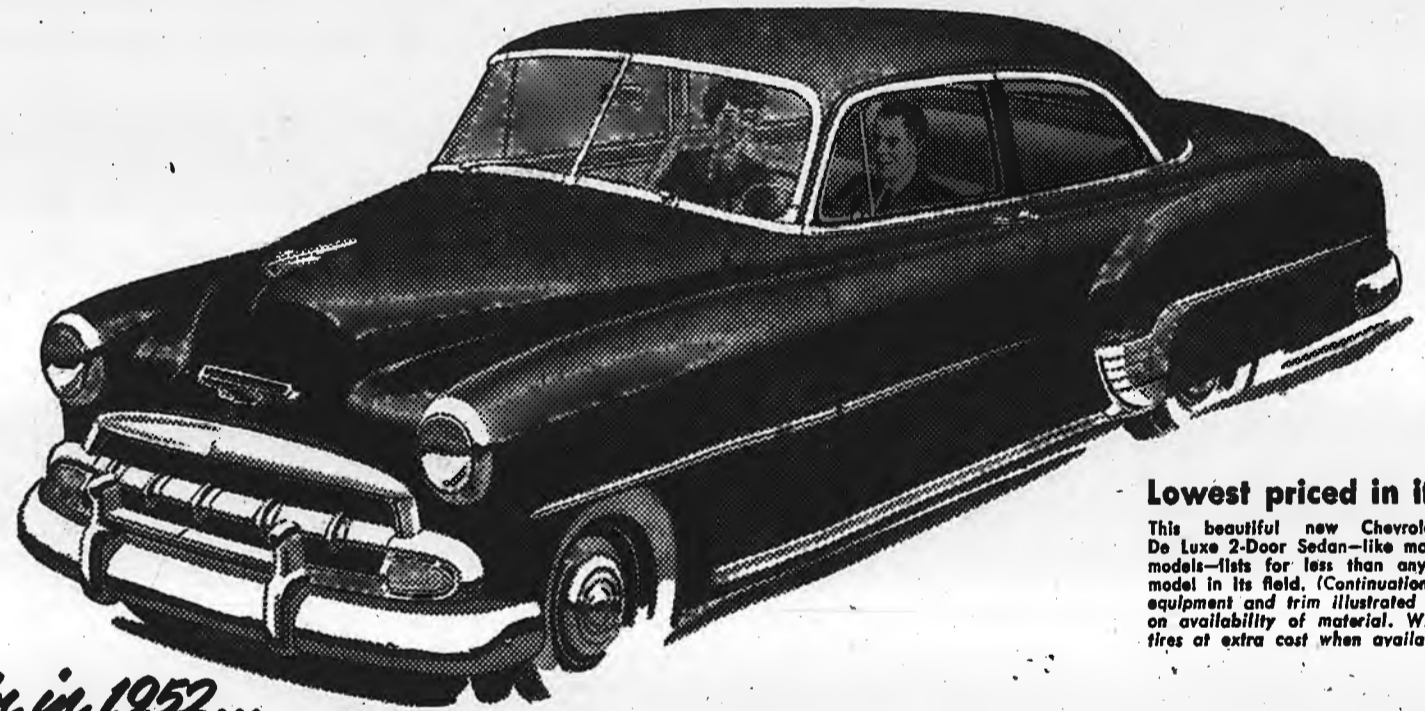
There's one clue that will help you recognize this hidden socialism. It's the old line: "Let the federal government do it—or run it—or take it over—or own and operate it." When you hear that, look out.

For the more things the federal government runs, the closer we are to socialism—whether we want it or not—and the fewer rights and freedoms we have left for ourselves.

America can escape socialism—here's how you can help: Recognize the steps that lead to it. Help your friends and neighbors see the danger. And use your ballot wisely!

HELPING TO BUILD
A Finer Carolina

CAROLINA POWER & LIGHT COMPANY



Lowest priced in its field! This beautiful new Chevrolet Styleline De Luxe 2-Door Sedan—like many Chevrolet models—fits for less than any comparable model in its field. (Continuation of standard equipment and trim illustrated is dependent on availability of material. White sidewall tires at extra cost when available.)

Again in 1952...

lowest-priced line in its field!

Yes, Chevrolet brings you lowest prices on model after model... as well as all these fine features found in no other low-priced car!



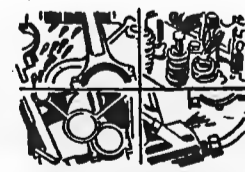
CENTERPOISE POWER



LARGEST BRAKES



WIDEST COLOR CHOICE



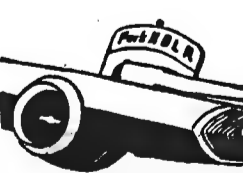
4-WAY ENGINE LUBRICATION



CAST IRON ALLOY PISTONS



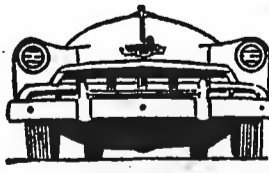
SAFETY PLATE GLASS ALL AROUND



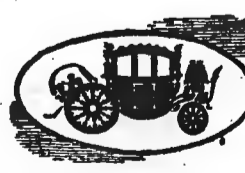
POWERGLIDE AUTOMATIC TRANSMISSION*



UNITIZED KNEE-ACTION RIDE



WIDEST TREAD



BODY BY FISHER



E-Z-EYE PLATE GLASS



MOST POWERFUL VALVE-IN-HEAD ENGINE

*Optional on De Luxe models at extra cost.

MORE PEOPLE BUY CHEVROLETS THAN ANY OTHER CAR!



The Only Fine Cars PRICED SO LOW!

HOKE AUTO COMPANY

Phone 363

Raeford, N. C.