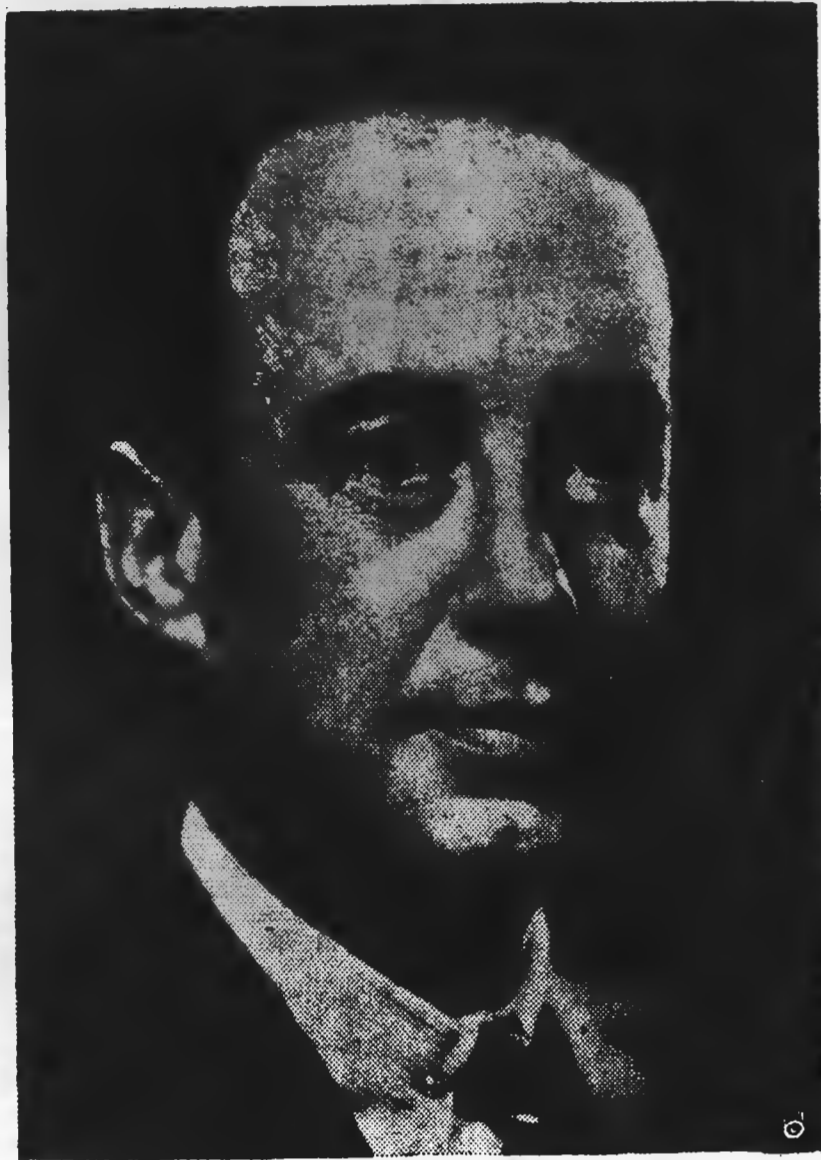


# Be Democratic - - VOTE DEMOCRATIC



ADLAI E. STEVENSON

VOTE THE  
STRAIGHT  
DEMOCRATIC  
TICKET



JOHN J. SPARKMAN

## Compare The Record

DEMOCRATIC

REPUBLICAN

- The support price for tobacco, cotton, corn, etc.
- The Crop Control Program
- The Soil Conservation Program
- The Rural Electrification Program
- The Farm-to-Market Roads
- The Medical Care Program
- Unemployment Insurance
- Old Age Pensions
- Social Security Benefits
- Better Crop Yields through Scientific Research
- Improved and Enlarged School Facilities
- School Lunch Program

These and many more progressive measures established for the people by our County, State and Nation—by the Democratic Party.

**VOTE FOR CONTINUED PROSPERITY  
VOTE DEMOCRATIC**

They have fought against every single progressive program established for the people.

Sponsored By Loyal Hoke Democrats Who Believe In The Democratic Party.