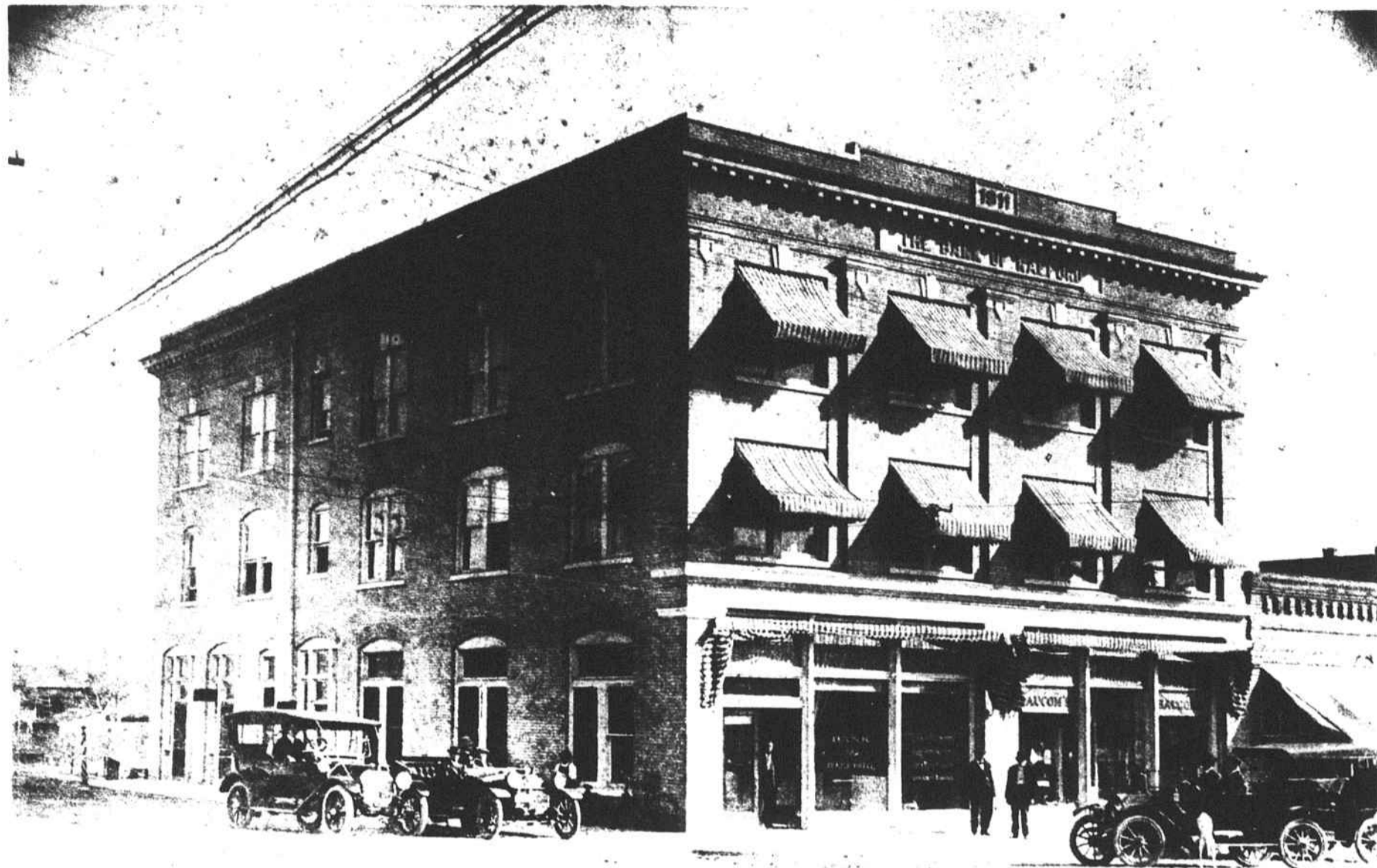


Progress Since 1903



This Was OUR First Giant Step To Improve Our Banking Service. After Eight Years, In 1911 We Moved Into This Building. We Have Grown, And Now Occupy The Entire First Floor. We Are Now Large Enough To Serve You But Small Enough To Know You.

1903 OFFICERS

President: John Blue
Vice President: George A. Graham
Vice President: J.C. Thomas
Cashier: John W. Moore

1903 DIRECTORS

J.C. Thomas
John Blue
A.W.E. Capel
J.A. Blue
John W. Moore
George A. Graham
W.J. Upchurch
J.W. Johnson
J.W. McPhaul
N.S. Blue

Progress is more than essential to good business. To us, it is our responsibility to the individual and business firms we serve. For more than 67 years--in good times, and through critical war years, The Bank of Raeford has furnished services and financial assistance to the citizens of Hoke County.

Through post war periods; through inflation, depression and the economic adjustments that have occurred during those years, The Bank of Raeford has met every banking need--continually enlarging the scope of its activities for the community. In the new era, being marked by growth, we pledge that we shall serve you with the best that modern facilities can provide--that is the responsibility of leadership. To receive your continued patronage is our reward.

We cordially invite your use of our services and assure you of our prompt, courteous and earnest attention to your every banking need. Your account with this financial institution provides a valuable and useful banking connection.

1969 OFFICERS

J.L. McNeill, Chairman of the Board
R.B. Lewis, President
T.F. McBryde, Vice President
Miss Jesse B. Ferguson, Cashier
R.L. Conoly, Ass't Cashier

1969 DIRECTORS

J.H. Austin, Jr.
T.F. McBryde
Bernard Bray
Tom U. Cameron
Neill A. McDonald, III
H.L. Gatlin, Jr.
W.L. Howell, Jr.
D.R. Huff, Jr.
James B. McLeod
W.L. Moses
J.L. McNeill
Edwin D. Newton
J.W. McPhaul
T.B. Upchurch, Jr.
R.B. Lewis

The Same Hometown Bank Operated By Hometown People

The Bank Of Raeford