

PRICES IN THIS AD EFFECTIVE THROUGH SAT., FEB. 15 AT A&P IN RAEFORD, N. C.

COME TO WHERE
THE VALUES ARE

ITEMS OFFERED FOR SALE NOT AVAILABLE TO OTHER RETAIL DEALERS OR WHOLESALERS

WHITE BEAUTY SHORTENING
LIMIT ONE WITH \$10 ORDER
3 Lb. Can \$1.58

JANE PARKER BAKE N' SERVE
ROLLS 12-Oz. FLAKY 2 Pkgs. 79¢
10-Oz. FRENCH SESAME SEED Your Choice

JANE PARKER WHOLE CRESCENT
POUND CAKE OUTSTANDING VALUE 30-Oz. Pkg. 99¢

BARBARA DEE
COOKIES ASSORTED FLAVORS 2 6-Oz. Pkgs. 77¢
LIMIT 2 CANS WITH OTHER ORDER

V-8 VEGETABLE JUICE 46-Oz. Can 58¢
CHED-O-BIT INDIVIDUALLY WRAPPED

CHEESE SLICES 12-Oz. Pkg. 89¢
A&P FROZEN DESSERT TOPPING

HANDI WHIP Qt. Cup 59¢

TOMATOES 4 IONA \$1
PRICED LOW 16-Oz. Cans

MEAT VALUES TO HELP STRETCH YOUR BUDGET

"SUPER-RIGHT" HEAVY WESTERN GRAIN FED BEEF
CHUCK ROAST BONE IN (None Preferred Higher) Lb. 68¢

"SUPER-RIGHT" HEAVY WESTERN GRAIN FED BEEF
CHUCK STEAK BONE IN Lb. 88¢
CUBED CHUCK STEAK Lb. 159¢

FREEZER QUEEN FROZEN
MEAT ENTREES
2-Lb. Pkg. 99¢
CHAR BROILED BEEF PATTIES
TURKEY CUTLET WITH GRAVY
MAN SIZED BEEF PATTIES
SLICED TURKEY
SALISBURY STEAK

GRADE 'A'
TURKEY PARTS
Lb. 59¢
TURKEY BREAST lb. 99¢ BREAST QTRS. lb. 69¢

"SUPER-RIGHT" GRAIN FED FRESH PORK
PICNICS
4 Lb. To 8 Lb. Average Lb. 69¢

ALLGOOD BRAND
SLICED BACON 1-Lb. Pkg. \$1.29

CAP'N JOHN'S FROZEN OCEAN
Perch Fillets 1 LB. PKG. 79¢

BUTTER BASTED
A&P TURKEYS 10 To 14 Lb. Avg. Lb. 69¢

SAVE MONEY ON A&P
PAPER TOWELS
ASSORTED COLORS 2 JUMBO ROLLS 78¢

A&P FABRIC
SOFTENER 1/2-Gal. Jug 58¢
LIQUID BLEACH
CLOROX 1/2-Gal. Jug 49¢

SPECIAL FEATURE
PANCAKE FLOUR
SUNNYFIELD REGULAR 2-Lb. Box 49¢

ANN PAGE PANCAKE & WAFFLE
SYRUP 32-Oz. Bot. 85¢
CHECK & COMPARE

GARDEN FRESH PRODUCE
POTATOES
GREAT BUY U. S. NO. 1 WHITE 20 Lb. BAG 99¢

FLORIDA HONEY
TANGERINES 20 120 Size 99¢

WASHINGTON GOLDEN DELICIOUS
APPLES EXTRA FANCY 3 Lb. \$1

WHITE BREAD MARVEL SANDWICH SLICED 3 1 1/2-Lb. Loaves \$1.
Pepsi Cola CTN. OF 6 - 32 OZ. BOTTLES 1.85 PLUS DEPOSIT

GREAT FOR SNACKS
SUNSHINE FIG BARS 1-Lb. Pkg. 69¢

YELLOW POPCORN 2-Lb. Pkg. 65¢

CHILLED
A&P ORANGE JUICE 1/2-Gal. Ctn. 73¢

HEARTY AND VIGOROUS
OUR OWN TEA BAGS 100-Ct. Pkg. 89¢

REGULAR
KEN-L RATION DOG FOOD 15 1/2-Oz. Can 22¢

BLUE OR WHITE LAUNDRY DETERGENT
SAIL 49-Oz. Pre-Price Pkg. 99¢

AP WEO
WHERE ECONOMY ORIGINATES

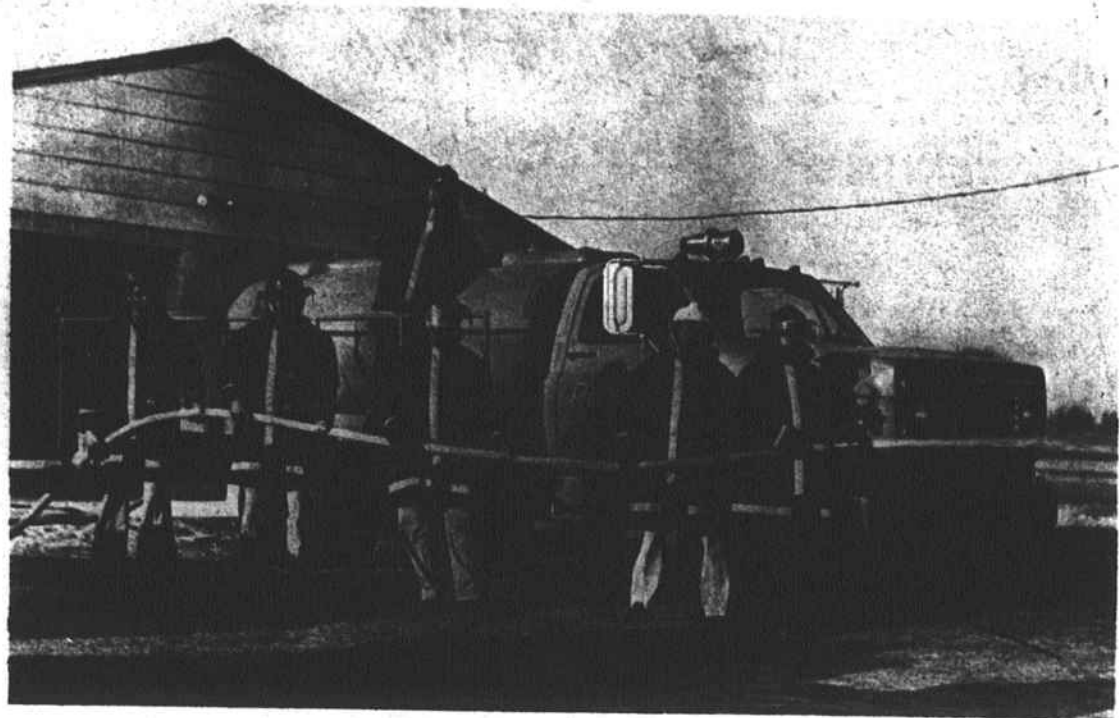
A SUPERB BLEND, RICH IN BRAZILIAN COFFEES
8-O'CLOCK COFFEE
1-Lb. Bag 99¢ 3-Lb. Bag \$2.89

A&P FROZEN POTATOES
FRENCH FRIES
2-Lb. Bag 58¢ 3-Lb. Bag \$1.28

REGULAR OR CRINKLE CUT
CONTAINS RICH BRAZILIAN COFFEES
8-O'CLOCK INSTANT COFFEE 10-Oz. Jar \$1.49

WED COUPON
MAXWELL HOUSE
COFFEE 2-Lb. \$2.49
WITH THIS COUPON PAY ONLY
LIMIT ONE COUPON PER FAMILY
VALID THROUGH FEB. 15, 1975

A&P WED COUPON
A Quality Blend, Rich in Brazilian Coffees
COFFEE 2-Lb. \$2.25
WITH THIS COUPON PAY ONLY
LIMIT ONE COUPON PER FAMILY
VALID THROUGH FEB. 15, 1975



FIREMEN...from West Hoke check out the equipment on their new truck. Members of the organizing department shown are (from left) James Ray Sr., King Henry Love, Cleo McDuffie, Thomas Farmer, Dannie McCollum and Winston McRae. Not pictured are Clem Ray, J.J. Bratcher, James Ray, Willie Williams, Dannie L. Bridges, Richard Baldwin, Frank Briant, Jack Purcell, Eugene Lowery and H.B. Nixon.

Fire Training Starting

Training classes began this week for firemen in the West Hoke area. Dannie McCollum, president of the West Hoke Volunteer Fire Department that is organizing now, called for men interested in fire protection for the area to attend classes on Tuesday and Thursday night at the fire station on Turnpike Road. The department has recently completed work on their truck and has obtained equipment. The tanker frame was constructed by Bill McQuage to a cab purchased by the department. West Hoke was first organized in 1969 with Paul Harris as president. McCollum said they are expecting state approval soon.

Workshop Set On Alterations

A workshop for senior citizens on remodeling clothes will be held Feb. 20 in the kitchen of the county office building. The class from 10 a.m. to 2 p.m. will be conducted by Mrs. Brenda Canady, associate home economics agent. Participants are asked to bring a light lunch and clothes that need altering.



Many farmers are thinking about

Sears BIRTHDAY DISCOUNT SALE
4 DAYS ONLY - WEDNESDAY thru SATURDAY
February 12 thru 15th

GET A DISCOUNT ON
ORDERS TOTALING \$50 OR MORE!

\$3.00 off purchases of \$50	\$15.00 off purchases of \$200
\$5.00 off purchases of \$75	\$20.00 off purchases of \$250
\$7.50 off purchases of \$100	\$25.00 off purchases of \$300
\$10.00 off purchases of \$150	\$30.00 off purchases of \$350

Ask about additional discounts on purchases over \$350

Plan all your needs now to get the biggest savings!
Discounts apply to Sears regular catalogs
and Sears current Sale Catalogs

Authorized SEARS CATALOG SALES MERCHANT

Sears
Owned and Operated by
DUGAN & GWEN SEAWELL
123 W. Elwood Phone 875-4230

Farm Items

By W. S. Young & Phil Ricks
County Agricultural Agents

A campaign is being started in North Carolina this year to knock out Mosaic in our tobacco crop. Growers must start the control system at the plant beds and this means now. The Mosaic virus is found in manufactured tobacco products, tobacco stalks, stems, leaves and roots of the preceding crop, hosenettle, tobacco scrap and burlap sheets used for marketing tobacco. The loss is around six million dollars each year.

A leaflet giving all the information is available at the County Agents office. Some "No Smoking, Chewing or Dipping" signs are also available that can be posted around tobacco plant beds to remind employees that might be weeding or pulling tobacco plants. Let's stamp Mosaic out this year.

A summary from 55 tobacco counties has been done on the 1974 crop about the disease control treatment usage. Growers appear to be selecting control treatments, varieties, chemicals and cropping systems, based on the major problems. The use of varieties with high resistance increased slightly. Chemical soil treatment usage increased by 9%. Cropping systems that involve continuous culture increased by 2.4% with a corresponding decrease in use of 2-year rotation. Few growers (reduction of 10%) followed the preventative control program for Blue Mold, Anthracnose and damping off.

planting pickling cucumbers this spring. This is a crop that can provide some early income to families, if the job is done right.

A new bulletin on production practices is available from the County Agents office. It goes into detail on good insect and disease control. Fertility of the crop is critical and nitrogen sidedressing is necessary.

A horse round-up will be held at Camp Carroway in Asheboro on Feb. 22. The schedule of activities is:

9:00 A.M. Horse Bowl & Horse Public Speaking Contest
12:00 Noon LUNCH
1:30 P.M. Horse Clinic: Fitting; Showmanship; Equipment & Adjustment; First Aid.
5:30 P.M. DINNER

The Horse Bowl Contest is a team of four in question and answer competition similar to the College Bowl on television. It is open to all 4-H members interested in horses.

The public speaking contest is open to any 4-H member interested in horses. The speech must be on a horse related subject. The Horse Clinic is open to all youth and adults interested in horses. Anyone interested in the contest will be given further details. If you would like to attend the clinic contact me so transportation can be arranged.

4-H Training

4-H adult leaders will hold a training session Saturday at the Mary Bee Farms on U.S. 401. Registration begins at 1 p.m.

Methodists Set Prayer Day

Methodist women at Raeford United Methodist Church will observe their annual call to prayer and self denial Sunday at 2:30.

The special offering will benefit two aspects of the mission program; the deaconess and home missionary pensions in the United States and the overseas theological renewal program.

The service for the Quiet Day will be "Transformation of the Self and the World."



Chevy Fleetside pickup is built tough to work hard. Check our double-wall construction, Massive Girder Beam front suspension. And check our ride, handling and comfort, too.

Hoke Auto Co.

Dealer Lic. No. 1283
MAIN STREET
RAEFORD, N. C.