

Hospital News

CAPE FEAR VALLEY
Fletcher Oldham

MOORE MEMORIAL
Mrs. R.L. Carter
Mrs. Jack Mansfield
Mrs. Chandler Roberts, home

VETERANS, FAY.
J.A. Jones

ST. JOSEPH
L.M. Lester

McCain
Miss Delia Blue

Shop Our Classifieds
For Bargains

MOBILE HOMES FOR RENT

Completely Furnished
Good Location

Phone 875-5151 Day
or
875-2117 Night

ENGAGED COUPLES ONLY

Engaged?

Then Be Sure And Get Your

FREE RUBY & CRYSTAL WEDDING BOWL



Our engagement gift to you! This lovely ruby and crystal wedding bowl . . . perfect as a beautiful centerpiece or a treasured memento. So come in and get yours . . . it's gift wrapped and waiting for you! NO PURCHASE NECESSARY!

Also ask about our Special Under 21 CREDIT PLAN for married or engaged couples . . . No Co-Signers Needed!



112 HARRIS AVENUE

RAEFORD, N. C.

From The Home Agent's Desk

By Ellen Willis & Brenda Canady

wrinkles. Press out center fold to make sure it does not leave a mark. If fold cannot be pressed out, you will have to avoid it as you lay out the pieces.

2. Fabric is almost always folded right sides together for cutting. It is cut right side out of it has a design that must be taken into account and that does not show through to the wrong side (printed corduroy, bonded fabrics).

3. Never let fabric hang over the edge of cutting surface.

ARRANGING PATTERN PIECES:

1. If you have bought the correct yardage, as given on pattern envelope, a

trial layout will not be necessary.

2. You should be guided by the layout you have circled.

3. When, on a layout, a pattern piece is shown extending beyond a fold line cut out the other pieces, then open out remaining fabric to cut this one.

4. When half of a pattern piece is drawn with a broken line, it means that the piece is a half-pattern, to be cut on a fold.

5. Place pattern piece on fabric - to position grain line, measure distance from one end of extended grain line to salvage; pin pattern through grain line.

Pin through other end of grain line at same distance; then through center of line.

6. Smooth pattern out from grain line and pin at opposite corners, then at opposite sides. Keep pins inside cutting line of pattern and don't use too many - they can distort the cutting line.

REMEMBER:
1. Cut exactly outside the cutting line on a pattern.
2. Keep fabric and pattern flat on table.

3. Cut with long strokes.
4. Always cut around notches.

Hint
For pickled eggs -- Pennsylvania Dutch style -- place some whole, peeled hard - cooked eggs in a glass jar. Cover with a mixture of equal parts beet juice and vinegar. Add a little onion and a few whole cloves. Cover the container and refrigerate three or four days before using.

Schedule
March 20, 7:30 P.M. - Raeford Extension Homemakers meeting in the

Organist To Play At Pinehurst Chapel

Organist Theodore Hazard Keller will play compositions by French Romantic composers of the late 19th century in a recital Sunday at 4 p.m. at the Village Chapel in Pinehurst.
Included will be "Piece Heroique", "Pastorale" and "Chorale in B Minor", all by Cesar Franck and the Sixth Organ Symphony by Charles Marie Widor.

GARDENING SAVES
A good vegetable garden can be worth \$300 to \$400 in reduced food costs for many families.

kitchen of the County Office building. Hostesses: Mrs. Johnny King, Mrs. W.H. Tapp and Mrs. Elizabeth Park.

March 24, 8:30 A.M. - Staff Conference.

March 24, 7:30 P.M. - Mildouson Extension Homemakers meeting with Mrs. E.B. Maxwell and Mrs. J.A. Jones.

March 26, 2 P.M. - Rockfish Extension Homemakers meeting with Mrs. Roscoe Bundy.

March 27, 2:30 P.M. - 2:30 P.M. Raeford Extension Homemakers meeting at the home of Miss Lucille McLeod.

March 27, 5 P.M. - North Raeford Extension Homemakers meeting.

CUTTING
All of you know that a mistake in cutting cannot be ripped out like a wrong seam. It often makes a person nervous especially if the fabric is expensive. The thing to remember is to proceed without haste, study your pattern guide sheet, and take into account all indications on the pattern pieces themselves.

THE EQUIPMENT:
Assemble everything you need: cutting surface (large table or cutting board), shears, tape measure, yardstick, pencil, pins and pincushion, fabric, pattern.

PREPARING THE PATTERN:
Pick out the pattern pieces you will use (depending on what "View" of garment you have selected on envelope). Smooth out pieces with a warm, dry iron, if necessary. Make pattern alterations, if any.

Small pieces, if printed together, must be cut apart.
Grain Line Marks, to serve their purpose properly, must extend the entire length of pattern pieces. Use yardstick and pencil, extend grain line arrows on printed patterns.

Selecting Your Pattern Layout: On your pattern guide sheet, locate and circle your pattern layout: for the selected view of your garment, for your pattern size, fabric width, and fabric either "With Nap" or "Without Nap."

Fabrics that are "Without Nap" have no up or down direction in design, weave, or texture, and may be cut with pattern pieces facing in either direction. Fabrics "With Nap" must be cut with tops of all pattern pieces facing the same way.

A true napped fabric (wool broadcloth, flannel, camel's hair, etc.) looks best with nap running toward hem of garment.

A pile fabric (velvet, corduroy, etc.) has a richer color with the pile running toward top of garment.

THE FOLD IN THE FABRIC:
1. If your fabric fiber demands it you will have shrunk the fabric and straightened its cut ends. Press out any

Widths	32"	36"	39"	41"	45"	50"	52"	60"
Yardage	1 7/8	1 3/4	1 1/2	1 1/2	1 3/8	1 1/4	1 1/8	1
	2 1/4	2	1 3/4	1 3/4	1 5/8	1 1/2	1 3/8	1 1/4
	2 1/2	2 1/4	2	2	1 3/4	1 5/8	1 1/2	1 3/8
	2 3/4	2 1/2	2 1/4	2 1/4	2 1/8	1 3/4	1 3/4	1 5/8
	3 1/8	2 7/8	2 1/2	2 1/2	2 1/4	2	1 7/8	1 3/4
	3 3/8	3 1/8	2 3/4	2 3/4	2 1/2	2 1/4	2	1 7/8
	3 3/4	3 3/8	3	2 7/8	2 3/4	2 3/8	2 1/4	2
	4	3 3/4	3 1/4	3 1/8	2 7/8	2 5/8	2 3/8	2 1/4
	4 3/8	4 1/4	3 1/2	3 3/8	3 1/8	2 3/4	2 5/8	2 3/8
	4 5/8	4 1/2	3 3/4	3 5/8	3 3/8	3	2 3/4	2 5/8
	5	4 3/4	4	3 7/8	3 5/8	3 1/4	2 7/8	2 3/4
	5 1/4	5	4 1/4	4 1/8	3 7/8	3 3/8	3 1/8	2 7/8

Personals

Mr. and Mrs. Jeff Harris will leave today for a visit with their son and family, Mr. and Mrs. Bill Harris and son Jeffrey, in Cincinnati, Ohio.

Mr. and Mrs. Henry Maxwell, Mr. and Mrs. Graham Clark, and Mr. and Mrs. Roy Oestreich of Whiteville, spent last weekend at Wrightsville Beach.

Mrs. Thomas Shapiro and daughter Lisa of Chicago, Ill., arrived last week for a visit with her parents, Mr. and Mrs. Chandler Roberts.

Mrs. John Campbell and Mrs. June Johnson returned last week from a trip to Mexico.

Mr. and Mrs. Jeff Harris and Tom spent the weekend with Mrs. Jerry Stanfield in Roxboro.

4-H Corner

By Brenda Canady & Phil Ricks

First aid was explained to Stonewall 4-H'ers by members of the Hoke County Rescue Squad at a meeting of the Stonewall 4-H club on March 11.

Robert Conoly and Bill Parker demonstrated first aid techniques to the group.

The 4-H'ers presented a donation to the rescue squad following the program.

A variety of activities are scheduled for Hoke 4-H'ers in the next few weeks.

The Fashion Revue will be held April 17 for club members ages 9-19. There will be three levels of competition: preteen, ages 9-11; early teen, ages 12-13 and senior teen, ages 14-19. Suggested garments for preteens to make are skirts and aprons. Early teens are advised to sew a dress, 4-H uniform or sportswear, and senior teens may make a dress, sportswear, suit or coat ensemble, formal or party dress.

Boys may enter pants, jacket, jacket with pants or pants with shirt.

A 4-H demonstration workshop will be held April 2 at 10 a.m. in the conference room of the post office building. Many pointers will be given on how to get started in working up a demonstration.

A special bicycle camp at Penn 4-H Camp will be held July 20-26 for youngsters ages 9-13. For applications, which must be in by May 1, contact the extension office.

A 4-H horsemanship camp will be held June 8-14, 15-21 and 22-28 at Millstone 4-H Camp. Riders interested in attending should contact the extension office by April 1.

The annual South Central 4-H horse show will be held April 26 at the Silver Spur Saddle Club Grounds in Ellerbe.

4-H camp will be held July 14-19 at Camp Mitchell when Hoke youngsters will be camping with 4-H'ers from Hertford, Hyde and Carteret counties. The quota for Hoke is 40, so sign up early.

A talent show is being planned for May 13. More details will be announced.

Enter the traffic safety poster contest, open to kids ages 9-19. Using topics bicycle safety, pedestrian safety, automotive safety, safety belt usage, motorcycle safety or school bus safety, enter your poster on 8 1/2 by 11 inch paper and on the back write your name, address, age, parents' name and county. Submit to Mrs. Brenda Canady at the extension office.

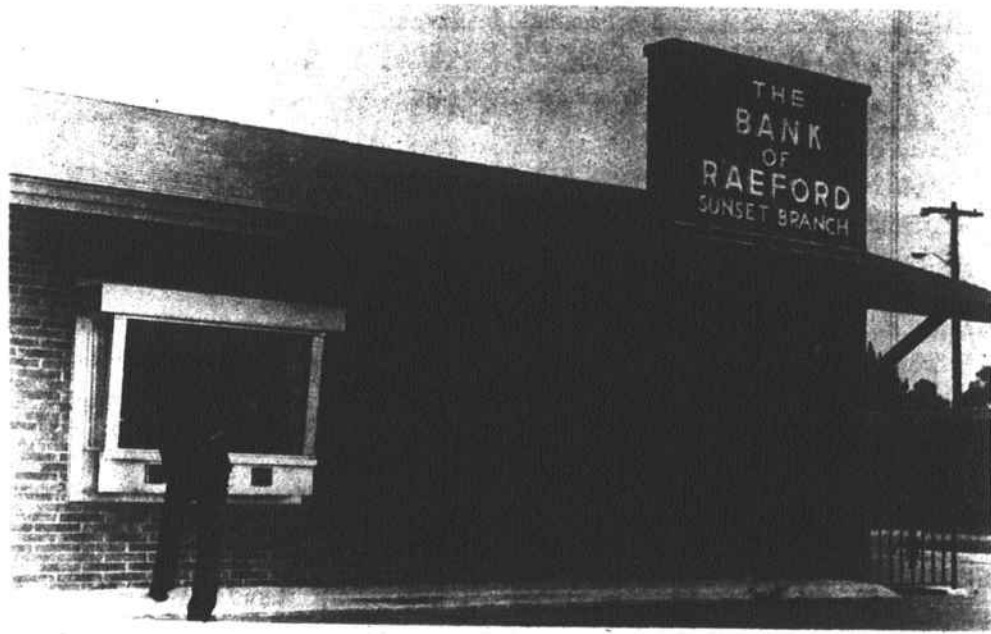
Plate Sale Set

At West Hoke

A plate sale and turkey shoot will be held at the West Hoke Fire Department Saturday, March 22.

The plate sale begins at 4 p.m., and the turkey shoot gets underway at 7. The public is invited.

I didn't know
The Bank of Raeford Drive-In Branch
at Sunset Hills
had Walk-In Banking Facilities
as well as
Drive-In Service



Inside Premises Are Completely Protected
By Bullet Resistant Glass & Materials

FAST FRIENDLY SERVICE

MEMBER FEDERAL DEPOSIT INSURANCE CORPORATION
YOUR LOCAL, FRIENDLY BANK

The Bank of Raeford

RAEFORD, N. C.



EVERYTHING FINE at
Easter time

Ladies' Dresses

From

—Patricia Fair

—Paper Moon

—Street Scene

—Jerrie Lurie

—Puritan

—Kenny Classics

—Yardley

Kay Windsor —Hob Nobber

Junior, Misses & Half Sizes —Huntington

\$14.00 to \$55.00

Mix & Match

Ladies' Sportswear

From

College Town - Devon - Manor House

Blouses— Prints and Solids

Trousers— Fancies and Solids

Jackets and Vests

Little Ladies' Wear

from

Sportswear

Cinderella

from

Polly Flinders

Niki Lu

Nannette

Little Topsy

Toddler Sizes
& 4 to 14

\$9.00 to \$28.00



Collins Dept. Store

Main St.

Downtown Aberdeen