

## School Menu

**FRIDAY, MARCH 25**  
Beef Vegetable Soup  
Crackers  
Peanut Butter & Jelly Sandwich  
Cookie  
Fruit  
Milk

**MONDAY, MARCH 28**  
Hot Dog in Bun w/Chili  
Slaw  
French Fries, Catsup  
Cake  
Milk

**TUESDAY, MARCH 29**  
Beef-A-Roni  
Cheese Wedge  
Steamed Cabbage  
Rolls  
Apple Crisp  
Milk

**WEDNESDAY, MARCH 30**  
Hogie Sandwich  
Lettuce & Tomato  
Tri-Taters, Catsup  
Chocolate Cake  
Milk

**THURSDAY, MARCH 31**  
Manager's Choice

## Church News

Spring revival services are in progress at Lumber Bridge Presbyterian Church and will continue nightly at 7:30 through Friday.

Guest revivalist is Dr. H. Denmark Burnett, pastor of Parkton Presbyterian Church and a graduate of Union Theological Seminary and Virginia Military Institute.

Using a new radar system, scientists have found evidence of a lava flow the size of the state of Oklahoma on the planet Venus.



**DEMONSTRATION** -- April 5 has been designated a demonstration day for parents to view the physical education programs at South Hoke School. The school was selected last year by the state as a model for physical education.

### Model Center

## South Hoke School Plans Special Day

Parents will have a chance to get acquainted with the physical education programs of South Hoke School on Tuesday April 5 during the special demonstration day planned.

The South Hoke School was designated by the N.C. Department of Public Instruction last fall as a model center for physical education.

Demonstration Day activities will begin at 9 a.m. After the welcome, teachers and pupils will demonstrate ball handling skills, lead up

games to volleyball and soccer, lifetime sports and skills, informal approaches to square dances and rhythm and movement station work.

After a break at 10:45, the program will move outdoors with presentations of creative movement, flashcards, paper plates, beanbag activities, symbols and Saran wrap, rhythms with tires, the obstacle course and exercise with ropes.

In case of inclement weather, the classes will perform in the gymnasium.

Admission is free and the public is invited. For further information, phone the school at 875-2470.

### This Is The Law

What is the liability of a hotel for the property of a guest that is brought into a hotel?

In North Carolina a hotel cannot be held liable for loss or damage of the property of a guest unless the loss results from the failure of the hotel to exercise ordinary care. Even then the hotel cannot be sued for an amount in excess of \$100 if required notices have been posted.

However, if a guest notifies the hotel in writing that his property exceeds \$100 in value, and furnishes it with a list of property and its value the hotel may be held liable for any loss or damage to the property resulting from negligences on its part.

Proof of the loss of any such property, except in the case of damage or destruction by fire, is deemed prima facie evidence of the negligence of the hotel.

## Schedule

Upchurch School  
Boys' Baseball and Girls' Softball Schedule  
1977

Day	Date	Team	Time	Place
Monday	March 28	Wicker	3:30	Home
Thursday	March 31	Southern Pines Middle School (Boys only)	4:00	Away
Wednesday	April 6	Anson	4:00	Away
Thursday	April 14	Jonesboro	3:30	Away
Monday	April 18	Southern Pines Middle School (Boys only)	4:00	Home
Tuesday	April 19	Hamlet	4:00	Away
Wednesday	April 27	Hamlet	4:00	Home
Thursday	April 28	Anson	4:00	Home
Monday	May 2	Jonesboro	3:30	Home
Thursday	May 5	Wicker	3:30	Home

Coaches: Girls' Softball - Pat Scott  
Boys' Baseball - Parnell Miles

School Colors: Royal Blue Jerseys - Gold Pants  
Location of Field: Armory Field on old 401 North Raeford, North Carolina  
Phone: 875-2384

Principal: Earl H. Oxendine

Athletic Director: W.K. Morgan

Upchurch will play 75' bases and 54' pitching mound when playing at home.

## Farm Items

By W. S. Young, Agri. Extension Chairman  
& Freddie O'Neal, Asst. Agri. Extension Agent

How fully and rapidly a fast-growing crop can get potash during critical need periods is a big key to ultimate yields. Plants need a full supply of potash all season to make sure they can get what they need when they need it, especially during rapid growth of early spring and during heavy grain or fruit fill.

Many states are showing through experiments that they are increasing yields by applying extra potash to soils that test high in potash. In Hoke County most of our soils are low to medium, so we need to pay particular attention to potash needs.

The 1977 Spring Holiday Plant Day for commercial flower growers will be held this year in Wilkesboro on March 23. Registration will be at the Holiday Inn and a tour will start from there at 10 a.m. Several greenhouses will be visited. The program will include talks on Insect Control in the Greenhouse, New Cultural Possibilities for Potted Plants and Handling and Storage of Floral Crops.

Farmers can increase their net income this year by planning a complete weed control program on all their crops. The types of weeds in the fields are most important to the grower. Then it requires the matching up of the chemical to control those specific weeds in each crop. Also it is most important to control the weeds and grass in the early part of the season if you can. A day or two spent in the planning before you put out herbicides can give you more income in the fall.

The dacoits of the Indian State of Rajasthan are a special breed of outlaws, National Geographic says. The true dacoits claim they are honorbound, as they have been for centuries, to rob only the rich and only in broad daylight.

### CURTIS T.V. And Used Furniture

712 S.W. Broad St.  
Southern Pines, N.C.

(beside A&P)

### REVIVAL RAEFORD PENTECOSTAL HOLINESS CHURCH

Corner Of  
Prospect Ave. and Weaver Street.  
EVANGELIST  
Rev. Sam Whichard, Pastor  
Mt. Carmel Pentecostal Holiness Church  
Of Fayetteville

**MARCH 28 thru APRIL 3**  
Services 7:30 Each Evening

## Dine and Dance

to the music of

**The Modern Knights**

**SATURDAY NIGHT  
MARCH 26th**

## Sock Hop

**\$14<sup>95</sup>** per couple  
Includes 2 Rib Eyes, Potato,  
Salad Bar  
(does not include set ups)

## HERNANDO'S

Tel. 895-5817 U.S. 1  
Rockingham, N.C.



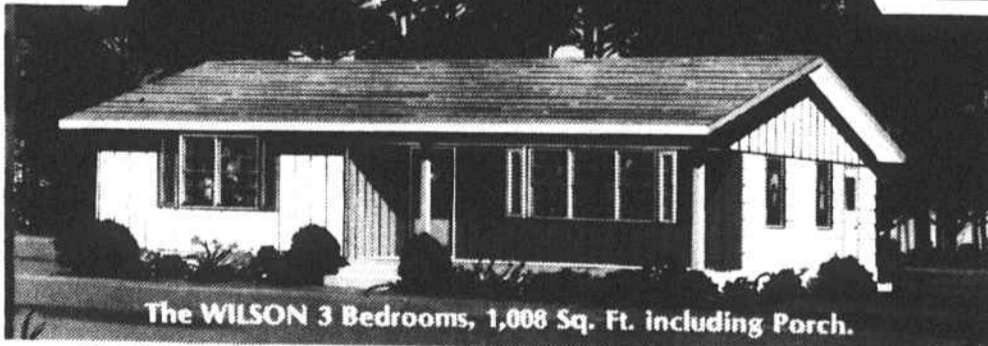
**"If the IRS calls  
me in, Block  
goes with me.  
No extra charge."**

When Block prepares your taxes, they stand behind their work. So if the IRS should call me in, H&R Block will go along with me at no extra charge. Not as my legal representative, but to answer any questions about how my taxes were prepared.

### H&R BLOCK

THE INCOME TAX PEOPLE  
Hotel Raeford  
Central Ave.  
Telephone 875-5330

**\$790 OFF** **HERE'S A REAL "OPPORTUNITY KNOCKER"** **\$790 OFF**



This 1,008 square foot basic home including a 4 foot by 20 foot front porch—for only \$9,995  
That's less than \$10 a square foot!!

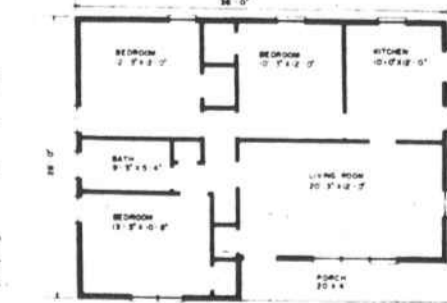
**FOR A LIMITED TIME ONLY,  
LOOK WHAT YOU'RE GETTING:**

- A quality material, quality built basic home erected and exterior finished on your lot.
- Plumbing for kitchen, bath and washer already installed.
- A whopping \$790 deducted from the regular selling price.

**NOW IS THE TIME TO BUY**  
Talk to an experienced CMH representative about getting the home you want and the financing you need. This is a limited time offer. Return the coupon today.

Or visit a Carolina Model Homes location and discover how a lot owner can become a home owner now.

**cmh**  
**CAROLINA MODEL  
HOME CORPORATION**



**MODEL HOMES ON DISPLAY IN:**  
Fayetteville, N. C. (485-4111) Raleigh, N. C. (834-8771)  
Greenville, N. C. (758-3171) Rocky Mount, N. C. (442-8897)  
Jacksonville, N. C. (455-1921) Wilmington, N. C. (763-8315)  
Florence, S. C. (662-8491)

Mail to: CAROLINA MODEL HOME CORP., P. O. Box 3278 Fayetteville, NC 28301  
( ) Please send free Home Plan Book. ( ) Please have representative contact me.

OWN A LOT Yes  No

Name \_\_\_\_\_

Address \_\_\_\_\_

City \_\_\_\_\_ State \_\_\_\_\_ Zip \_\_\_\_\_

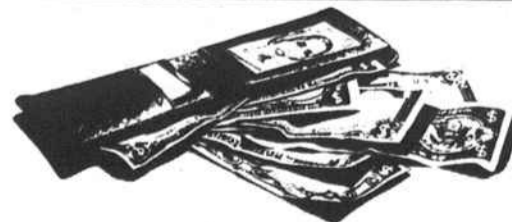
Phone \_\_\_\_\_

If rural route, give directions

**SAVE**

**SAVE**

CMH SPECIALIZES IN CONSTRUCTION AND FINANCING ALL TYPES OF HOME IMPROVEMENTS



**There is a way  
to get relief from  
the \$\$\$ drain.**

Simply go to the Safeway Finance office nearest you and ask one of our budget counselors to give you the facts. It's possible that a bill consolidation loan could actually reduce your monthly note payments in half. We've done it for lots of families.

Think about it... one monthly payment at one place.

**Safeway Finance** where people and money get together

LOAN TO \$1500

103 N. MAIN ST. 875-4111 RAEFORD, N. C.