

Around Town

BY SAM C. MORRIS

The weather last Friday and Saturday had people turning off the air conditioning and turning the heat back on. Many places had record lows for the morning Friday and hail came to many parts of the state Friday afternoon. Saturday morning the temperature was also in the 40s.

The report for the remainder of the week is for warmer weather and a small chance of showers on Tuesday and Wednesday.

So maybe summer is almost ready to come and stay.

Frances Ward Greene, local manager of the license bureau for the Chamber of Commerce, called last week and asked that we print something in this column. It seems that someone left a green plaid hat with a yellow feather at the chamber office. It is a size seven.

Now to most folks it would seem that it is a ladies' hat because of the plummage. But after observing the hat that my friend, Robert Gatlin brought back from Germany, it could be a man's hat.

Anyway if you need the hat, go by the chamber office and claim it.

Eugene Carter and Mrs. Joyce Monroe of The Bank of Raeford are in need of old pictures of the City of Raeford. If everything works out as they plan, the bank will print a history of Hoke County and Raeford and give it out when they open their new main offices on South Main Street.

There have been numerous histories written during my time but very few have been put in book form with pictures. This would certainly be a book we would all like to keep and it will take many hours of hard work for it to be completed. The bank employees will do the research and leg work, but they need everyone's help to make the project a success.

So if you have any information on old pictures of the county or city, get in touch with someone at the bank, no matter how small you may think what you have is, because it could fill the gap in the history they are looking for.

If you are from out - of - town, send it to me or to the bank and we will be glad to return it to you.

Let's pull together and get the complete history.

The gas situation in Raeford is as bad as it is in other parts of the country. If everyone will go on like they usually do and not panic, there should be plenty of gas for everyone in Hoke County.

While off last Friday afternoon and Saturday morning, most places had gas, one place was out of unleaded gas but was looking for the truck at any time. Another place stated that "credit cards" would not be honored. But on the whole, most places were operating as usual and I didn't observe any lines at any stations.

So if we play the game by the rules most of us in Hoke County will come out winners.

The member - guest golf tournament will be played at the Arabia golf course this weekend. Not being a tournament player myself, although there are many that like tournaments, we hope that most of the members will sign up and play. Earl McDuffie is chairman and if you get up with him he will give you all the details.

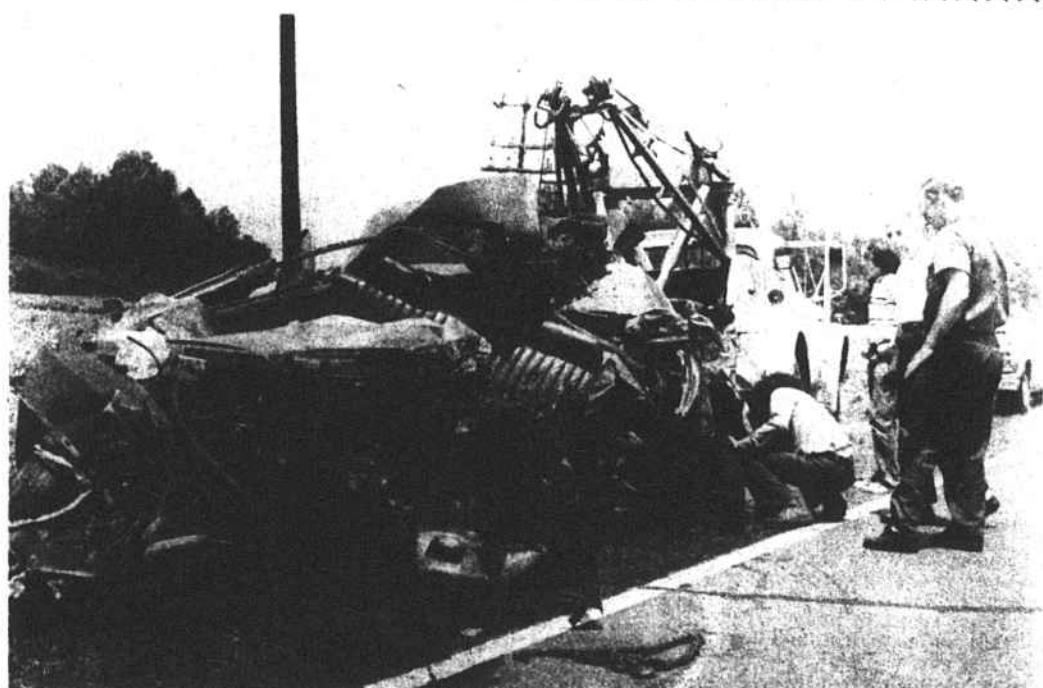
Jimmy Wood, chairman of the Heart Drive for Hoke County, was last week and said that plans were being made for a golf tournament for that cause June 19 and 20. More details will appear elsewhere in the paper.

Chief of Police Zeke Wiggins was by the office Monday and had with him a built - up shoe that he had picked up from Lundy's Shoe Shop where it had been fixed. The shoe was for his brother who was in an auto accident recently and will have one foot in a cast for a number of

(See AROUND TOWN, page 3)

Memorial Day Survey Shows

Local Gas Merchants Optimistic



Remains of car after collision Friday...Johnny Lamb, its driver, was killed.

County's Sixth Fatality Of 1979

Road Crash Kills Man

A 26-year-old Fayetteville man was killed about 1:10 p.m. Friday when the car he was driving and a tractor-trailer collided head-on on U.S. 401 eight-tenths of a mile south of Raeford, the State Highway Patrol reported.

State Trooper Louis Rector said the dead man was Johnny Lamb of 1755 Torrey Dr., killed on impact.

He said the driver and owner of the truck, Thomas H. Beebe, 61, of Lavonia, Ga., suffered spine and leg injuries and was taken to Cape Fear Valley Hospital in Fayetteville.

Rector quoted a witness who was driving behind the truck when the collision occurred as saying the car, traveling south, swerved for no apparent reason into the path of the truck, which was traveling north.

The office said skid marks made on the highway by the truck's tires extended 89 feet, indicating Beebe attempted to drive his truck to the east side to avoid a collision with the auto.

He said the impact was so great it knocked the truck's front wheels off. He said the wheels on the axle were 19 feet from the truck's cab, or tractor, part of the tractor-trailer.

Pieces of the car, including its motor, littered the highway and its shoulders for about 50 feet after the collision occurred.

Lamb's car, a 1970 Ford, was demolished, the officer said.

The damage to the truck, a 1971 International, he said was about \$8,000, but added this is just a guess. Raeford firemen also went to the scene with a truck.

Lamb's death was the sixth this year in Hoke County traffic accidents.

The most recent before his occurred May 10.

Lamb is survived by three brothers and five sisters.

The funeral services were scheduled for 2 p.m. Wednesday at Bible Way Holiness Church of Fayetteville, with burial in Northside Cemetery.

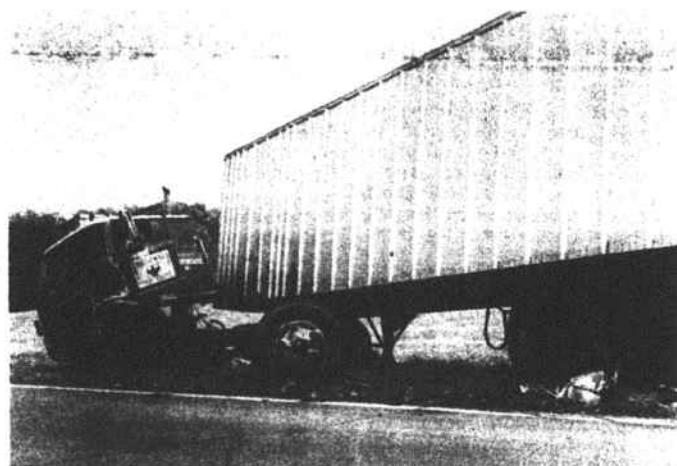
Unemployment Drops 2%

Unemployment here dropped by more than two percent for April, the lowest rate this year, according to figures released by the State Employment Security Commission.

The April rate of 7.0 percent was 2.4 percent above the state rate of 4.6 percent. The national rate was 5.5 percent for April.

An estimated 570 persons were unemployed here in April while last month, 740 were unemployed.

Last April, unemployment stood at 11.3 percent, making this year's total more than four percent less than last year's.



Tractor-trailer shows damage caused by fatal collision

Chorus To Perform Parts Of 6 Musicals

The Choral Department of Hoke County High School will present its annual spring concert on Friday, at 8 p.m. in the K.A. MacDonald Gymnasium.

The program, titled "On With the Show," will salute six Broadway musicals and will involve approximately 120 singers, actors, and dancers. The musicals that will be featured include "Camelot," "Chorus Line," "Oklahoma," "The Sound of Music," "Caret," and "The Wiz."

The "Camelot" sequence will feature Jerry Bruner as Sir Lancelot, Julie Frazier as Queen Guenevere, and Richard Cole as King Arthur. Musical selections include "Then You May Take Me To The Fair," "I Loved You Once In Silence," and "If Ever I Would Leave You." The sequence will also feature court dancers, knights, a forest spirit, and two court jesters.

Tim Sessoms and Kim Hardin will play the leads of Curly McLain and Laurey Williams in the "Oklahoma" sequence. Also featured will be soloist Joan Frazier singing "I Can't Say No," and 18 dancers. Other musical selections include "Oh What A Beautiful Morning," "The Surrey With A Fringe On Top," and "People Will Say We're In Love."

Nine musical selections including "Do Re Mi," "Edelweiss," and "Climb Every Mountain" will be performed in "The Sound of Music" segment which features Gay Ivey as Maria and Allen Sandy as Captain Von Trapp. The segment will also feature the captain's seven children and a 15 member nuns' chorus.

"The Wiz," a modern version of

"The Wizard of Oz," will feature D.D. Dockery, Meredith Kershaw, Lawrence Gilchrist, and Kinney McRae playing the parts of Dorothy, the Scarecrow, the Tin Man, and the Lion respectively. The cast also includes Tonja Williams as The Good Witch Glenda, 14 munchkins, eight crows, and five "poppy girls." Popular musical selections include "Home," "Ease on Down The Road," and the colorful "Emerald City Sequence."

"Chorus Line" and "Caret" will be featured as minor segments between the four other musicals. The casts include Allen Sandy, Rusty Huff, Frances Leggett, and two groups of dancers.

All dance and acting sequences have been choreographed by both present and former Chorale and Chorus members with additional set decoration and construction by Joanna Best and Barry Ellis. All special lighting and sound effects will be provided by Civilization Light and Sound.

Everyone present will be assured of a thoroughly entertaining and enjoyable evening. Admission will cost \$1 a person.

Hoke Sales Tax Nets \$20,053.82

Net collections of the one percent Hoke County sales tax in April totaled \$20,053.82, the State Department of Revenue reported Friday.

The collections in the previous month were \$17,859.09.

by Cassie Wasko

While national, local and state news revolves around the gas crisis and motorists worry about summer vacation or weekend trips and whether enough gas will be available to get them home, local gas merchants seem to think the gas situation has not reached a crisis level here...yet.

A Memorial Day survey of 16 local stations found only one station closed and two that have run out of gas. None of the local merchants surveyed has a limit on gas, although David Tew of the Grocery Mart said that a limit was imposed there over the weekend.

"We just wanted to make sure we had gas through the weekend," Tew said of the limit that was lifted Monday.

Most station's prices on regular gas are within a penny of their competition, although unleaded prices can be found with as much as five cents variance per gallon. Premium was found to be selling from 83 to 89.9 cents per gallon at full-service stations.

Although there appears to be plenty of gas in the area, the price is climbing at a rapid pace as is indicated by the survey chart. Many local merchants, when asked to quote prices, had to check the pumps to determine Monday's selling price. One station-owner said that the gas had gone up three and one-half cents Monday morning.

Many of the stations surveyed said they do not have a limit -- yet and, although plenty of gas is available now, they have no idea what next month will bring.

Several owners said they may get a decreased allotment ranging from 10 to 20 percent less than what they got last year.

Bob Gentry of Gentry's Tire Service said that his allotment has been cut by 10 percent, and, as a result, he is not taking new customers. Gentry said that new customers will be turned away at the pumps.

The merchants' opinions of the gas situation was just as varied as some of the prices.

"We are going to have plenty of gas. I don't see any shortage," Charles Averitt of Averitt's said, while both Parks and Pete's Exxon stations reported that they were out of gas.

"We don't expect to run out," David Tew of the Grocery Mart reported. "It looks pretty good," Doug Nixon of Graham's said.

Some of the merchants reported that they can't foresee what will come after this month, but most remain optimistic that gas will be in good supply. Hoarding gas in containers is almost nonexistent, all of the merchants said, and most claim that they will probably just sell the gas they have until it runs out, imposing no limits on the amount bought.

LOCAL GAS SURVEY (Taken Monday)

Station Name	Regular	Prices Unleaded	Premium	Purchase Limit
Averitt's	--	81.9	83.9	none
Carter's Exxon	82.9	87.9	89.9	none
Clark's Gulf	79.9	84.9	85.9	none
Conoly's Exxon	79.9	83.9	85.9	none
Dave's Exxon	78.9	81.9	83.9	none
Graham's Full-service	79.9	84.9	85.9	none
Graham's Self-service	77.9	82.9	--	none
Hugh's Texaco	NO COMMENT			
Locklear 76	84.9	87.9	--	none
Parks Exxon	77.9	89	83	out of gas
Pete's Exxon	76.9	--	83.9	out of gas
Traveler's Full-service	83.9	87.9	88.9	none
Traveler's Self-service	79.9	83.9	84.9	none
The Pantry (Harris Ave.)	79.9	84.9	--	none
The Pantry (Central Ave.)	79.9	83.9	85.9	none
Grocery Mart Full-service	79.9	83.9	85.9	none
Grocery Mart Self-service	77.9	82.9	84.9	none
Gentry's Tire	78.9	83.9	--	no new customers accepted
JB White's	80.9	85.9	86.9	none

Chocowinity Native New Conservationist

The new Hoke County soil conservationist of the U.S. Soil Conservation Service is Samuel Garfield (Sam) Warren a 23-year old native of Chocowinity in Beaufort County.

He started work in Raeford from the SCS office in the post office building May 21.

He succeeds Oval Richie, who was transferred to the western part of the state several months ago.

Warren served in Wake County with the SCS from May 1978 till he was transferred to Hoke County. He graduated from North Carolina State University in May 1978 with a Bachelor of Science degree in agricultural engineering technology.

Warren spent the summer of 1977 in Lenoir County as a trainee.

He said last week he is particularly interested in public information. (See CONSERVATIONIST, page 3)



Samuel G. Warren