



Plants of the Season Add To Festivities

One of the loveliest Christmas traditions is that of adorning homes and churches with flowers and greenery that we associate with the season. Christmas just wouldn't be Christmas without the festive holly, for instance.

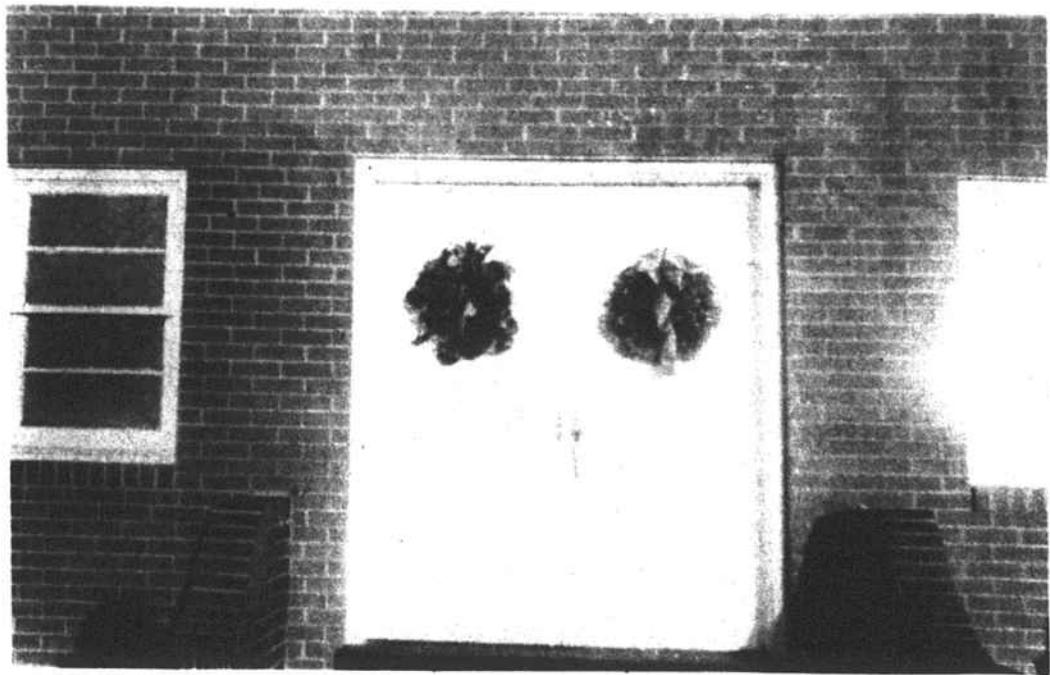
Actually, the use of holly as a decoration goes all the way back to the Druids. They believed that the plant sheltered spirits of the woods who were threatened by harsh, winter weather. The Romans also considered the holly to be festive; branches were sent to friends as Saturnalia gifts. In time, the pagan use of the plant became Christianized so that now holly and the holiday season are synonymous.

Another traditional Christmas plant is the poinsettia, known as the *flor de noche buena* (Christmas Eve flower) in its native Mexico, where it was noticed by Joel Roberts Poinsett. The American minister to Mexico was so taken with the colorful flower that he brought the plant back to America, where it became associated with the holidays around the turn of the century. Today, the spectacular poinsettia is a familiar decoration in the home and around church altars at Christmas time. Gifts of the plant, which are now cultivated in pink and white, in addition to the spectacular red, are also popular at Yuletide.



Thanking all of our loyal customers for doing business with us. We enjoyed working with you and we look forward to seeing you again. Have a wonderful Christmas.

**McNeill & Willis
Motor Company**



St. James United Church of God

Let Youngsters Make Holiday Greetings Cards

One way to keep youngsters occupied while they're counting the days until Christmas is to let them make their own greeting cards for special people such as grandparents or a favorite teacher.

All you need is construction paper, glue, scissors and some old greeting cards.

Have the children cut out holiday motifs from the cards: a Santa face or a Christmas tree, for example. Then, have them fold 9x12 paper in half and once again in half, to form the basis for their cards.

Next, have them draw a circle on the front of the card, using a round object such as a coaster or cup to define the circle. (Make sure their circle will accommodate the motif that has been selected.) Have children cut out the circle and then place their motif within the circle, gluing motif to the second sheet of the folded paper.

The inside sheets can be used for a personal message from the youngster, to be crayoned or penciled in.

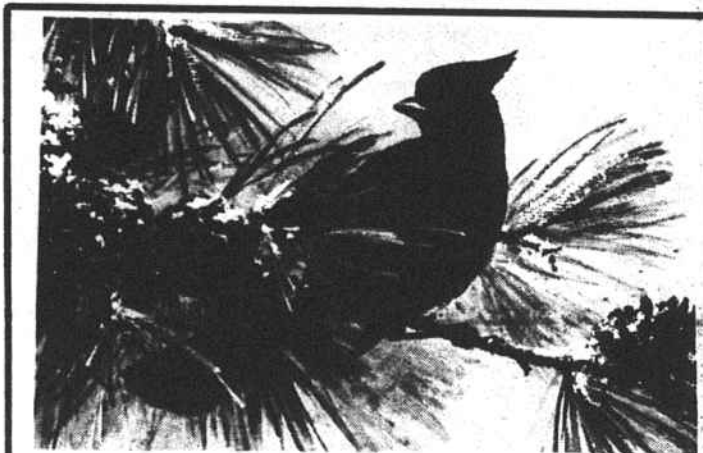
To make an envelope for the greeting card, take another 9x12 sheet of construction paper and fold it 4 1/2 inches from the bottom,

lengthwise. Then, fold along the lengthwise edges, approximately 1 1/4 inches in. Glue edges along 4 1/2 inches, leaving top edges open for card to slip in.

After the youngster's greeting card has been placed in the "envelope," fold over the top of it and seal it with a decorative sticker.



Have your youngsters hand-deliver their greeting cards to admiring family and friends.



A CHRISTMAS WISH:

We hope you enjoy a happy holiday season in warmth and peace. Our best wishes of the season to everyone.

Enviro-Chem Co.
Raeford, N.C.



Christmas has changed greatly since the time of Dickens but there's one thing that's still the same—the heartfelt greeting of friends to one another as they celebrate the festive season . . . "Have a very merry Christmas!"

**HOKE-RAEFORD
CHAMBER OF COMMERCE**



A Christmas wish: That you find serenity in a quiet place, a loving face, within your heart.

**William L. Poole Insurance Agency &
C&H Cycle Shop**

FAYETTEVILLE, N.C.