

Raeftord Girl Helping St. Andrews

The St. Andrews Lady Knights of Laurinburg, who include sophomore Monique McClinton of Raeftord, are off to a great start in their new Dixie Conference.

The Knights were able to compose a 5-1 beginning of the 1981-82 basketball season. With a new conference, St. Andrews has acquired the services of a new coach, Betsy Graham of Pulaski, Va.

The Lady Knights constitute a strong team with most of last year's players, losing only two starting seniors. This year's team has an average height of 5 feet 8½ inches and is much quicker than last season's. The seniors are Captain Teresa Robin and Catherine Seal. Armstrong is leading the team and conference in scoring with 24 points

and is second in team and conference rebounding with 11. She already has been named Dixie Player of the Week of December 14 for having scored 80 points and gotten 40 rebounds in three games. Robin is team and conference leader in assists with 13.

The juniors are Virginia Williams of McColl, S.C., Kathy Daniels of Bidwell, Ohio, Lydia

Lavelle of Cleveland, O., and Cynthia Terrell of Los Angeles, Calif. Williams is shooting 59 per cent from the field.

The sophomores besides McClinton are Eva Pittman of Lumberton, and Marie Coleman of Charlotte. Pittman is the second team and conference scorer with 22 points and rebounder with 13. Gales is the team's third leading rebounder with 10, and McClinton is fourth with 7.

The freshman is Sandra Holland.

In January the team is looking for the addition of Marcella Gaston of Charlotte, and Brenda Johnson of St. Thomas, Virgin Islands.

Suffering their only loss, to Wingate College, the Knights have defeated Greensboro, Methodist of Fayetteville, Meredith of Raleigh, Coker of Hartsville, S.C., and Coastal Carolina colleges.

They will open the 1982 part of their season January 13 against North Carolina Wesleyan at Rocky Mount. On January 15 they will play their first home game of '82 against Virginia Wesleyan. The starting time is 5:45 p.m.

Men's Basketball

The Men's Basketball League continued action December 21 with LREMC defeating the Bullets 59-54.

J. McCollum led all scoring with 16 points. L. Patterson had 12, and E. Chavis had 10 for LREMC.

Leading scorers for the Bullets were M. Jones with 13 points, T. Barnes with 10, E. Carthens with 10, W. Wilson with 9, and F. Barnes with 9.

In the last game of the night, the Suns defeated the House of Raeftord 64-62 in double overtime. J. Carthens had 18 points, L. Crawford 16, and N. McNeill 14 points for the Suns.

Leading scorers for the House of Raeftord were R. McNeill with 24 points, and W. Love with 20.

Standings

| | W | L |
|--------------------------|---|---|
| 1. All Stars | 4 | 0 |
| 2. Suns | 4 | 2 |
| 3. House of Raeftord | 4 | 2 |
| 4. 76ers | 3 | 1 |
| 5. Hollingsworth Barbers | 3 | 2 |
| 6. LREMC | 2 | 4 |
| 7. Bullets | 0 | 4 |
| 8. Mindblowers | 0 | 5 |

Church Basketball

December 21: Presbyterian - 37, Ashley Heights Baptist - 35.

Presbyterian: J. McDonald 20, A. McDonald 10, and M. Ivey 10. Ashley Heights Baptist: M. Aaron 10, B. Poole 8, and P. Poole 8.

First Baptist - 51, Pittman Grove - 40.

First Baptist: J. McGowan 19, W. Wilkes 18, and McBryde 4. Pittman Grove: R. Shepley 16, F. Davis 10, M. Madden 8, and P. Barnes 6.

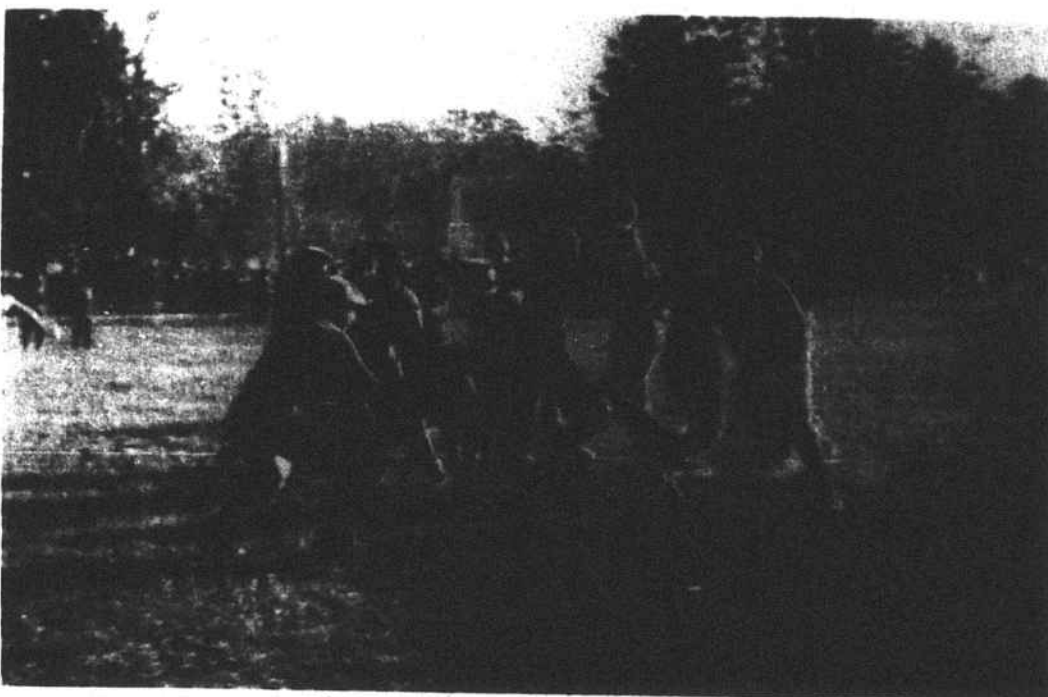
Evangelical Methodist - 39, Ashley Heights Baptist - 35.

Evangelical Methodist: B. Hales 22, D. Deaton 8, and D. Kitchens 8.

Ashley Heights Baptist: M. Aaron 8, B. Poole 8, and P. Poole 6.

Standings

| | W | L |
|---------------------------|---|---|
| 1. Evangelical Methodist | 3 | 0 |
| 2. Presbyterian | 3 | 0 |
| 3. First Baptist | 3 | 1 |
| 4. Pittman Grove | 0 | 3 |
| 5. Ashley Heights Baptist | 0 | 5 |



EARLY FOOTBALL -- The News-Journal was informed last week that Raeftord High School's first football team is playing a game in this photo. Who are the players, and when, where, and whom are they playing in the picture? If you know, any of the answers, please let The News-Journal know.

Hoke Team Sixth Entering Second Round

Hoke High's wrestling team entered Tuesday's second round of the Pinecrest Christmas Tournament near Southern Pines in sixth place with 14 points.

Hoke had scored 14 points up to then. South Irdell was leading with

28, a point ahead of defending champion Seventy-First, Westover was third with 25.5, Richmond Senior fourth with 20, and host

Pinecrest fifth with 16. Hoke was followed by Wadesboro Bowman with 11 and Douglas Byrd with eight.

TENNIS LADDERS

WOMEN

1. Marilyn Semones, 2. Joanne Simpson, 3. Susan Phillips, 4. Carol Holland, 5. Joy Upchurch, 6. Betty Morgan, 7. Betty Smith, 8.

MEN

1. W.K. Morgan, 2. Chess Hayes, 3. Steve Phillips, 4. Billy Powell, 5. Robert Calhoun, 6. Gene Hasty, 7. David Richards, 8. Tommy Gaddis, 9. Cecil Bond, 10. Barry Bond, 11. David Smith, 12. Jamie Hayes, 13. Larry Upchurch, 14. Benny McLeod, 15. Gene Carter, 16. Vardell Hedgpeth, 17. Jim Moses, 18. Eric Coley, and 19. Bob Moses.



3 Bedroom House With Lot FOR SALE

SMALL DOWN PAYMENT

Move In Immediately

or

House Can Be Moved To Your Lot with No Down Payment

Call Collect 919-277-0104

Carolina Model Homes

P.O. Box 765
Laurinburg, N.C.
401 By-Pass

Recreation Bits

Rubik Cube Class

Who got a Rubik Cube for Christmas? Well, if you did, the Parks and Recreation office has a class just for you.

Hoke County Parks and Recreation Commission will sponsor a five-week class on how to solve the Rubik Cube. Jim Hoke, a senior at Hoke High, will instruct. Males and females of all ages are invited to join the fun. The class will be taught 7-8 p.m. Tuesdays at the Parks and Recreation office. The first session will begin on January 12 and the last will be held on February 16 (skip January 26 due to exam). There will be a \$5 entry fee and everyone must bring their own Rubik Cube.

Contact the Parks and Recreation to sign up. Space is limited.

Youth Ceramics

Hoke County Parks and Recreation Commission will be offering a six week Ceramic class for the first 15 students ages 8 and older who register. The class will be Wednesday, January 13-February 17, 3:30-4:45 p.m., at the Recreation office. There will be a \$10 fee per child. Mrs. Elizabeth Jones will be the instructor. Contact the Parks and Recreation office to register.

Ladies' Volleyball

Ladies, it's volleyball season once again. Hoke County Parks and Recreation Commission will sponsor a Ladies' Volleyball League this winter.

There will be an organizational meeting on Thursday, January 14, 7:30 p.m. at the Recreation office. All interested teams should have a representative present. To be eligible you must be 18 or have graduated from high school. Rules, regulations and schedules will be discussed. If you are interested in participating and do not have enough ladies for your own team you too are encouraged to attend the organizational meeting. Contact Hoke County Parks and Recreation Commission for more information.

Men's Liniment Basketball

Basketball for our Liniment League is just around the corner. Hoke County Parks and Recreation Commission will hold an organizational meeting for all interested teams and individuals on Monday, January 4, 7:30 p.m., at the Parks and Recreation office.

To be eligible for this league you must be at least 30 years of age.

All church groups, civic clubs, or just neighbor friends are encouraged to get a team together and join the Men's Liniment Basketball League.

Contact the Parks and Recreation office for more information.

Youth Basketball

Hoke County Parks and Recreation Commission reminds all parents of the following meeting dates for all interested basketball participants (each meeting will start at 5:30 p.m.):

Boys, 7-9 - Monday; boys, 10-11 - Tuesday, January 5; boys, 12-13 - Wednesday, January 6; and girls, 9-13, Thursday, January 7.

Each group will meet in the J.W. Turfington gym. On the above days each youth will be assigned to a team and will meet with his or her adult coach.

Youth basketball this year will have games at 5:30 and 6:15 in order to accommodate our adult coaches and interested spectators.

Anyone interested in playing basketball this year and who has not signed up is encouraged to contact Hoke County Parks and Recreation Commission 875-5603 or attend the day you qualify for as mentioned above.

Your age as of January 1, 1982, will determine which league you must participate in.

Also, parents or other friends interested in coaching are urged to contact the Parks and Recreation office.

Women and men coaches are needed.

Senior Citizens' Ceramics

The Hoke County Parks and Recreation Commission has a ceramic class planned for all interested Senior Citizens.

The class will meet on Wednesdays in the Parks and Recreation office from 2-3:30 p.m. January 13-February 17. The first 15 who sign up and register will be entitled to join in the fun. There will be an \$8 instructional fee. Mrs. Elizabeth Jones will be the instructor. Contact the Parks and Recreation office to get your name on the list.



FOR INFORMING PEOPLE -- Deacon Ervin Everette presents a check to James Peterkin, Sr., of radio station WSHB from the Community Brotherhood. Peterkin has done a wonderful job for the Brotherhood by informing the citizens of Hoke County about the different activities being conducted by the churches and the Brotherhood. The announcement made this week by the organization says.



J.H. AUSTIN

INSURANCE

SINCE 1950
AUTO — FIRE — LIFE
CASUALTY



114 W. Edinborough Avenue

Phone 875-3667

WAGON WHEEL RESTAURANT

Now Open For Lunch
Sunday 11:30 - 2:00 P.M.
875-5752

WHAT YOU DON'T KNOW ABOUT INDIVIDUAL RETIREMENT ACCOUNT IN 1982 CAN COST YOU \$\$\$\$\$

- Q. How do you know if you are qualified?
A. As of January 1, 1982 - every wage earner even if already in a pension plan - Qualifies.
- Q. What are the maximum contributions?
A. Any wage earner 100% of compensation or \$2,000 whichever is less. Any wage earner with a non-working spouse 100% of compensation or \$2,250 whichever is less. Working couples up to - \$4,000 (\$2,000 each).
- Q. If both spouses work what are the guidelines?
A. Each would be able to contribute 100% of compensation or \$2,000 - whichever is less to separate IRA's.
- Q. How are benefits taxed?
A. The benefits are taxed as ordinary income if taken after age 59½, in the year they are received. Tax break for you.
- Q. Is there a penalty for early withdrawal?
A. Yes-there is a 10% tax penalty, and there could be a six months loss of interest, in addition to having your funds added to your current income for tax purposes in year of withdrawal.
- Q. What happens if you contribute too much in any one year?
A. The 6% Tax penalty on excess contributions may be avoided by removing the excess and earnings no later than the due date of the tax return.
- Q. What happens if I am covered by a qualified pension plan and I change employers?
A. If you are covered by a qualified pension plan, these funds may be rolled over tax free to an IRA if you receive a lump sum distribution, and the rollover is made within 60 days of the distribution. Call us for specifics.

There are other services too!
Call us or drop by and let's get acquainted.



RAEFORD FEDERAL

SAVINGS & LOAN ASSOCIATION

TEL. 875-5061

1 CAMPUS AVE.

RAEFORD, N.C.

