

Merchants Bowling League

TOP 10 BOWLERS

Thomas Ham	174
James Nixon	171
Larry Black	170
Marion Hollingsworth	169
Mike Nieves	169
Larry McDonald	168
Lee Dixon	168
Sylvester McAllister	165
James Singletary	164
Mike Smith	161
Larry Lowick	161

BEST SERIES

Larry McDonald	585
----------------	-----

200 GAMES

George McKoy	231
McDonald	212
Alex Kelly	210
Anthony Holmes	209
James Singletary	206

MARCH 25

Fireballs 4	Auto Parts 0
-------------	--------------

APRIL 1 SCHEDULE

Florist vs Barbers

STANDINGS

	W	L
Barbers	66	42
Florist	65	43
Michael's	53½	54½
Strikers	53	55
Fireballs	45½	62½
Auto Parts	41	67

Arm Wrestling Champs Crowned

Hoke County Parks and Recreation Commission sponsored its first Arm Wrestling Championship on Monday, March 29, at Gibson Gym.

The competition was strong and the excitement high. The winners and weight divisions were:

Left Handed, Oral Singletary; Right handed 136-165 - Tim Cur-

rie; Right Handed 166-185 - Steve Sawyer; and Right Handed 221-up - Oral Singletary.

Twenty-five competed in this first-time event. Hoke County Parks and Recreation Commission does plan to sponsor this program again in the near future.

If you are interested, practice and be ready for the next meeting of the muscle.



Champs between referees Billy Davis [left] and Charlie Williams [right], who is ranked in the state's top 10 arm wrestlers in his weight division. In the middle are champs [L-R] Steve Sawyer, Oral Singletary and Tim Currie. [Staff photo by Pam Frederick].



Left-handed finals: Gary Frederick [left] and Oral Singletary, watched by referee Billy Davis [right]. [Staff photo by Pam Frederick].

Jim Conoly EXTERMINATOR Gary Conoly EXTERMINATOR Ken Conoly EXTERMINATOR

Enviro-Chem Co.

EXTERMINATORS
Household Pest Control

120 W. EDINBOROUGH AVE RAEFORD, N.C. OFFICE 875-8146 HOME 875-4419

Gets Data On Income Production

Study Group Visits Airports

The Blue Ribbon Airport Study Commission members appointed by the Raeford City Council, Hoke County commissioners, and Raeford-Hoke County Chamber of Commerce, last Friday toured two airports located in North Carolina.

The airports toured were the Shiloh Airport located in the Eden-Reidsville - Wentworth area of Rockingham County, and the Johnston County Airport located near the Selma - Smithfield I-95 area. This tour was coordinated by Earl Fowler, chamber director, and Ronald Matthews, city manager, who made the trip with the following: Cecil Bond, chairman of the Airport Blue Ribbon Study Commission and Raeford Plant Manager at Burlington Industries; Marianne Baker, community leader and local pilot; L.S. Brock, Jr., representing Faberge Industries; Tom Howell, president, Chamber of Commerce and local businessman and Danny DeVane, a Hoke County Commissioner and local realtor.

The tour began from the Raeford Municipal Airport with the first stop being the Shiloh Airport. The group was met and welcomed by the local Airport Authority members, and the Fixed Base operator. The group was able to discuss the Shiloh Airport operation, organization, and tour the Airport facility. Representing the Shiloh Airport in addition to the Airport Authority were: local pilots, Chamber of Commerce executives from Eden and Reidsville, the Rockingham County manager, and the airport consultant. The group discussed the history and development and importance of the airport to the local community and economy.

The Shiloh Officials emphasized that the airport itself was responsible for several major industries locating in the area, most notable being Miller Brewery.

The airport, which is owned by the county, produces approximately \$25,000 per year in tax revenues and in addition is indirectly responsible for an additional estimated \$325,000 per year in revenue to Rockingham County.

The group then flew to the Johnston County Airport in Johnston County, where the visitors were met and welcomed by members of the Johnston County Airport Authority and the airport manager.

Following a luncheon with the Airport Authority members, the group then toured the facility and discussed the organization and operation of the airport.

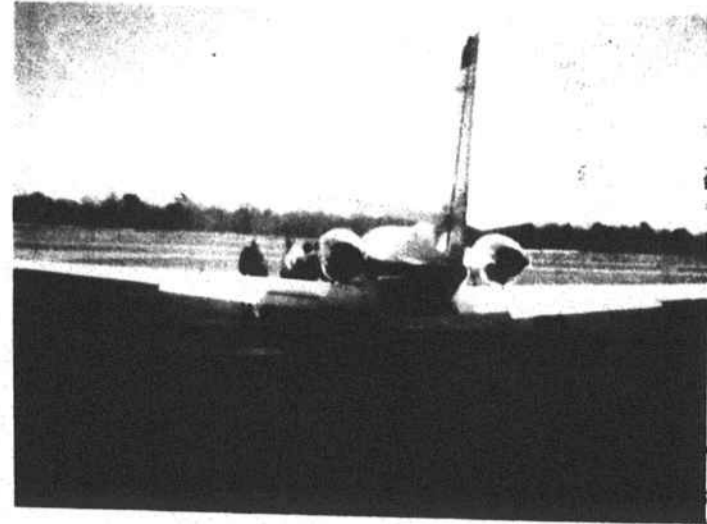
Again it was pointed out to the Raeford delegation the importance the airport played in the economic and industrial growth of the community. The Johnston County Authority informed the group that it, too, was responsible for generating approximately \$25,000 per year in tax revenues to the county and that they had been a self-sustaining airport since opening operation, 1978.

The group then flew back to the Raeford Municipal Airport where the members looked at and discussed the Raeford Airport facility and operation. They decided, after looking at the Raeford Airport and the other facilities, that they wanted to follow this up with a trip to the Laurinburg/Maxton Airport in the near future. A date has not been set for this tour at this time.

Fowler and Matthews, on behalf of the Airport Blue Ribbon Study Commission delegation, would like to publicly thank Cecil Bond, Dick Vaughan and Burlington Industries for providing a corporate jet to transport everyone to the various airports.

The entire delegation was very impressed with the airports, organizations, and operations and realizes what a tremendous potential the Raeford Municipal Airport has in the economic and industrial growth of the Raeford/Hoke community.

The airport tours were just one phase of the work undertaken by the Blue Ribbon Study Commission. The commission plans to have additional meetings, work sessions, and other activities prior to its completion and recommendations to the local officials.



Study Commission members board plane for inspection trip Friday.

Red Cross. The Good Neighbor.

WAGON WHEEL RESTAURANT
THURSDAY & FRIDAY
SHRIMP BASKET
(about 20 shrimp)
with FF, Slaw & Hushpuppies
\$4.00
Take Out Orders Call 875-6752

HARDIN'S FOOD STORE

(BESIDE FIRE STATION)
ROCKFISH, N.C.
AND

COLE'S FOOD STORE

(Except Gasoline)
MAIN ST., RAEFORD



OLD FASHIONED VALUES

We are small enough to be friendly, and large enough to serve your every need.

FRESH MEATS AT BOTH STORES

FRESH LEAN GROUND BEEF 1 19 lb.	PORK CHOPS 1 39 lb.	GRADE A FRYERS 39¢ lb.
--	--------------------------------------	---

CUBE STEAK 1 99 lb.	12 OZ. VALLEY DALE FRANKS 89¢	LUNDY'S SMOKED PICNICS 79¢ lb.
--------------------------------------	--	---

50 LB. BAG ALL STAR DOG FOOD 6 99	ALL KINDS FOX DELUXE PIZZA 89¢ ea.	3 LB. BAG RED DELICIOUS APPLES 99¢	R-T COFFEE 1 89 lb.
--	---	---	-----------------------------------

GIANT OXYDOL 1 89	GRADE A LARGE EGGS 79¢ doz.	5 LB. BAG SOUTHERN BISCUIT FLOUR 89¢
3 LB. CAN JEWEL SHORTENING 1 59	SWEET POTATOES 29¢ lb.	

1 GALLON COBLE MILK 1 99	FRESH FISH AND OYSTERS (Coles Store Only)	2 LITER (n.r.) COKES 99¢
--	---	--

GARDEN SEEDS and PLANTS of all kinds in both stores	GASOLINE REGULAR 1.079 UNLEADED 1.149 Hardin's at Rockfish ONLY	ALL STAR FEED ALL KINDS AT REASONABLE PRICES ROCKFISH STORE ONLY
--	--	---

Mon. thru Sat. 8:30 A.M. til 9:30 P.M.
Sunday 8 A.M. til 8 P.M.

OPEN 7 DAYS

DRIVE OUT & SAVE WITH THESE GREAT FOOD & GASOLINE SAVINGS

Grady Hardin, Manager, Rockfish

875-2201

WE ACCEPT FOOD STAMPS AND WIC VOUCHERS



Save for a sunny day. Buy U.S. Savings Bonds.

HOKE COUNTY Democratic Convention

Saturday, April 3
1:30

Hoke County Courthouse

SPECIAL GUEST

Congressman Bill Hefner

See news story in this issue of News Journal

Harold Gillis, Chairman

