

**In District Court**

# Check Charge Dismissed; DUIs Heard

The following District Court judgments were issued Thursday.

Charlie Smith, Rt. 2, St. Pauls, worthless check, voluntary dismissal by the prosecutor; defendant did not pass check.

Jack McGrigor, Rt. 1, Raeford, no operator's license, displaying expired license tag, and expired inspection certificate, 60 days suspended, \$50 and costs.

Jesse Currie Tew, P.O. Box 444, Raeford, driving under the influence, six months suspended for three years, \$200 and costs, surrender license and not drive for three years, except as provided for by law; defendant is excused from attending the Drug and Alcohol Abuse School because he recently received treatment in Cumberland Hospital in Fayetteville for problems relating to alcohol and successfully completed treatment.

Stephen Paul Kimsey, High Point, speeding 70 in a 55 zone, prayer for judgment continued, costs.

Paul Dave Pilson, Rt. 1, Cameron, speeding 66 in a 55 zone, voluntary dismissal by the prosecutor; exceeding a safe speed, costs.

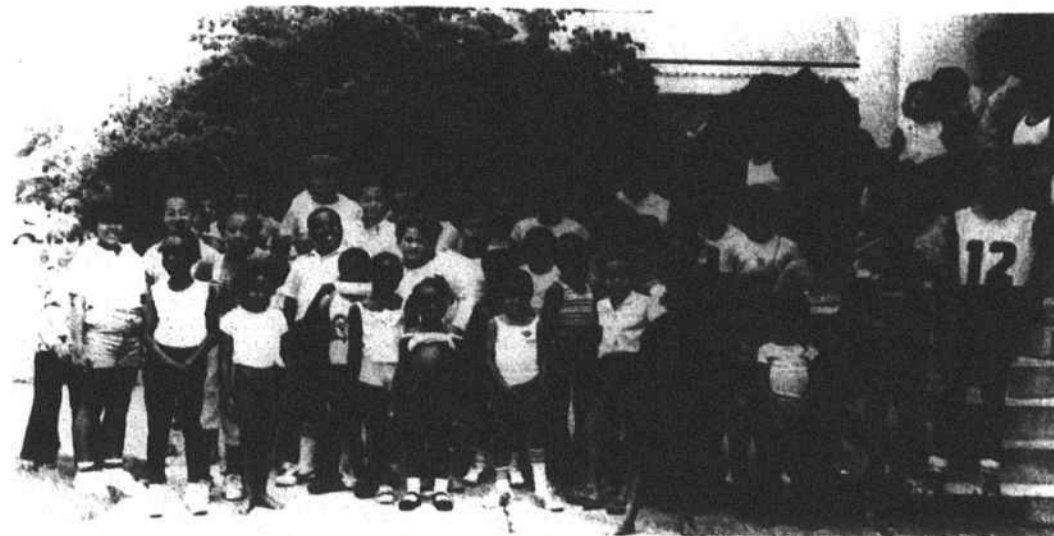
Calvin McGilvary, Rt. 3, Box 203, Raeford, disposing of mortgaged property, six months suspended for three years, \$405.53 restitution to Heilig-Meyers Furniture Co., and costs.

Eugene Campbell, 211 E. Edinborough Ave., Raeford, driving a bicycle under the influence, 90 days suspended, \$150 and costs, and not drive any kind of a motor vehicle.

Defendant in Wake County Jail on other charges.

Ray Costin, Harmony Heights Trailer Park, Raeford, injury to personal property, voluntary dismissal; duplication of charge in another warrant.

Tony Chavis, Rt. 1, Box 780, Shannon, nonsupport, pleaded no contest, prayer for judgment continued on condition the defendant pay \$35 per week, and court costs.



**COURTHOUSE "TOURISTS"** -- These 35 youngsters are shown with their adult leaders Thursday morning shortly after they visited the Courthouse offices and were informed what kind of work the people in them do. The trip was an activity of the EFNEP Day Camp for South Hoke. EFNEP stands for Expanded Food and Nutrition Education Program and is sponsored throughout Hoke County by the county Agricultural Extension Service to help families learn more about nutrition. The adult leaders with the South Hoke children were Willie Featherstone, county Extension chairman, who was in charge, and Tommy Williams, Dolores Dial, Lowell Simmons, and Naomi Simmons. Other day camps will be held for other groups of children July 13-14 at Silver Grove Church, and July 20-21 at Avery Chapel.

## Help For Neutering Program Asked

The following is from the Raeford Humane Society Newsletter and was written by Sheryl McGinnis, the society's director.

If there are any residents of Raeford and Hoke County interested in seeing the spaying and neutering program continue please contact me at the number listed below.

(875-3283 or - 8861).

Our goal for June did not exceed that of May, and this is a great disappointment to those of us interested in helping reduce the pet population.

Perhaps a lot of you are not aware of the tremendous burden unwanted litters of puppies and kittens places upon all of us. This is not a problem limited to pet owners only. Stray dogs and cats affect all of us.

Cute little puppies grow into big dogs who roam in packs, sometimes causing harm to smaller pets and/or our children. They tear our trash apart searching for food scraps. They suffer from the cold

winters, having no shelter to keep them warm and dry. Mother dogs have their litters in our backyards or off in the woods. They are subject to cruel treatment by some people, they are hit by cars and left to die on the roadside, they are poisoned, shot at, sold for experimental purposes. Small kittens are used as bait to train dogs to kill each other in private dog fights. The details of this particular atrocity are so disgusting that I can't bear to think about it.

But we must, so that we can prevent this type of abuse, and do something about it.

Small kittens and puppies are subject to all kinds of physical diseases and harm. They never know the kindness of a human hand stroking their fur or the comfort of a warm lap.

Their entire existence is one of searching for food, shelter and trying to take care of their litters.

It's a terrible thought to some of us, to destroy any living thing, yet the animals who wind up in the pound are really the lucky ones. At least they will be humanely and painlessly "put to sleep".

But we can prevent most of this if we will at least try. Recently, our organization had to turn down two people who needed their pets spayed but who couldn't afford even the reduced cost. Our organization would love to help subsidize the people who can't afford the full price, but without donations we are helpless.

In our column last month we

asked for help, either in the form of donations and/or baking cakes to sell at a cake sale. We are very disheartened that not one person responded to our request. The next time your pet cat rubs up against your leg purring or your dog is romping out in the yard with your children, perhaps you will take a minute to think about the other less fortunate animals who are doomed from the moment of birth.

There are approximately 26,000, 000 of them; homeless, but as much in need of some human kindness as our family pets. Wouldn't it be wonderful if we could prevent these 26,000,000 from being born in the first place, rather than have to destroy them each year? So please, help us help those who can't help themselves.

Any donation will be a great help. It's also tax deductible. But more importantly, it can help put an end to the needless suffering that goes on around us every single day. I think the philosopher, Edmund Burke, said it best: "He who is not actively kind, is cruel."

As of May, we have had only three people donate to our organization. To them we extend our heartfelt thanks, you know who you are. To those of you who haven't been able to donate to us, please take time to just think about the enormity of this problem, and give us a call. We would love to hear from you.

## Farm Focus

by Richard Melton  
Extension Livestock Agent  
Banks Wannamaker  
Extension Field Crops Agent

**PET CARE**

This is the time of year when pet care becomes very important. Because of the warm weather pets are far more active.

That increased activity means more contact between your pet and other animals. Make sure your pet has had the necessary vaccinations. In many cases a simple shot can save a loved animal's life and you a lot of grief.

Also, some diseases in warm blooded animals, such as leptospirosis and rabies, can be transmitted to humans from their pets. The only way to assure that your pet will not suffer from them and possibly give them to you is to have it vaccinated.

Also, during warm weather pets such as dogs and cats come in contact with internal and external parasites more often. Make sure that your dog or cat is checked by a veterinarian for worms annually. There are several types of worms which can cause poor health and even death in dogs or cats. Also, some of them can, in turn, attack humans. Round worms in particular can pose a hazard for young children.

Skin disease such as ringworm and mange can also be transmitted to humans. Make sure if your pet is affected by either that it receives proper treatment promptly.

External parasites such as fleas and ticks can also pose problems. Because of the type weather we have been having lately, flea populations have increased greatly. In fact, people have had homes infested with them with very little evidence of them on their pets. However, they are usually brought into the home on pets; therefore, a good flea-control program must include your dog or cat.

The flea is a blood-sucking parasite that can cause anemia in an animal if enough are present. Also, fleas can transmit diseases, contribute to skin diseases, and generally cause great irritation to the infested animal.

In order to effectively control a flea population, their life cycle must be broken. The most commonly used method is to use insecticide medication on the animal, any other area where adult fleas are found, and areas where eggs could be. Those areas would include the animal's bedding or rugs and carpets in the home. Even a chair an infested animal may lie in should be treated.

There are many insecticides available to use on fleas under many different conditions. For instance, most sprays or powders for use in the home cannot be used on animals. Also, most sprays, soaps, shampoos, or powders for use on animals would not be effective in the home. Make sure you follow the label instructions of whatever you use.

A vacuum cleaner is also good to use in any flea-control program. Vacuum over areas where your dog or cat spends much of its time in the home. That will aid in picking up any eggs present.

Whatever method you use to control a flea population should be repeated weekly for two or three weeks. The reason being that flea eggs hatch every eight to 10 days. Repeat treatments are a must if the population is to be controlled. After the infested area is cleaned of fleas, the pet should be treated at certain intervals to prevent reinfestation. The treatment interval will depend on the material used. It should be listed on the material's label.

Most of the same insecticides you can use for fleas are effective on ticks if ticks are a problem also.

Cleveland and Mecklenburg counties as the result of a disease called equine leucoencephalomalacia (ELEM) which is caused by *Fusarium moniliforme* mold spores on corn. The mold spores give off a toxin which is the cause of the problem.

The toxins develop when corn is stored under high moisture conditions. Mold growth develops on the corn, and the toxins result.

No tests are available to identify the type or types of toxins being given off by the mold. Also, once the symptoms of the disease develop it is incurable. Those symptoms are: the horse goes off feed; partial or total blindness; agitation; drowsy behavior; and seizures, which can develop immediately before death.

There are several good management practices horse owners or handlers can follow to aid in preventing ELEM in their horses. They are:

- Check all corn containing feed for mold or suspicion of mold. If it shows signs of mold, don't use it. Also remember, however, sometimes there may be no actual sign of mold and the toxin will be present.
- During excessive wet periods, switch from a corn-containing feed to an oats or rolled-barley feed.
- Feed at least 50 per cent of the horse's diet as forage. The exceptions to this would be lactating horses, weanlings or yearlings experiencing rapid growth, and heavily worked horses.
- Don't purchase grain mixes in amounts more than can be fed in two to three weeks.
- Don't allow feed to remain in troughs for long periods of time.
- Keep the moisture level in storage areas low.
- Buy feed only from reputable dealers.
- If signs of ELEM develop, discontinue the use of your present feed, switch to an oats ration with high quality hay, and call your veterinarian immediately.

J.H. AUSTIN  
**INSURANCE**

SINCE 1950  
AUTO — FIRE — LIFE  
CASUALTY

114 W. Edinborough Avenue Phone 875-3667

But we can prevent most of this if we will at least try. Recently, our organization had to turn down two people who needed their pets spayed but who couldn't afford even the reduced cost. Our organization would love to help subsidize the people who can't afford the full price, but without donations we are helpless.

In our column last month we

## EASY MONTHLY PAYMENTS!



**SAVE \$31.95!** 22" Lawn Mower with Dependable 3 1/2 HP Briggs & Stratton Engine Includes Two Baffles and Folding Handle

**\$228**

REG. \$259.95



**SAVE \$31.95!** Hi-Wheel Lawn Mower with Two 16" Spoke Wheels Offers 22" Cutting Width and 4 HP Briggs & Stratton Engine

**\$298**

REG. \$329.95



**SAVE \$21.95!** Lawn Mower with 20" Cutting Width Has 3 HP Briggs & Stratton Engine & 1" to 3" Adjustable Cutting Height

**\$198**

REG. \$219.95



**112 Harris Avenue  
RAEFORD, N. C.**

A MacSAVER ACCOUNT MEANS EXTRA CONVENIENCE FOR YOU!

**Joins Southern**

Theresa Wright of Raeford has joined Southern Travel of Charlotte. She recently graduated from McConnell School at Minneapolis, Minn., where men and women are trained for careers in the travel-related field.

SOCIAL NEWS -- 875-2121

**Watch For TWO-FER TUESDAY SPECIALS**

at



Each Tuesday  
During  
July & Aug.  
Unadvertised  
Specials

Main St. Raeford, N.C.

**HORSE FEEDING**

Five horses recently died in

## Army Observing Birthday

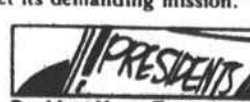
The U.S. Army is observing its 207th birthday this year, and Army secretary John O. Marsh, Jr., has issued the following statement in reference to the observance.

"This year marks the 207th birthday of the United States Army, a proud national institution whose roots predate the founding of the Republic itself. The 167 campaign streamers which hang heavy from the Army flag are visible evidence of our historic devotion to the ideals and interests of our Nation.

"Today, the Total Army -- Active, National Guard and Army Reserve, together with our civilian members -- stands ready once again to meet the challenges of our time. Seldom have the threats been so diverse, and the resulting need for land forces so clear. Our daily effort is directed to the deterrence of hostile acts against our nation. But we must be prepared to take the field instantly toward whatever objective we are directed, should that fail.

"Fortunately, we are entering a much needed era of modernization, the visible signs of which are becoming more widespread daily. Its effects extend well beyond equipment, however, introducing new unit organizations, new procedures, new training thrusts, and new personnel management objectives -- all innovations directed toward a better Army. The transition we are in today is exciting. It will span many future Army birthdays. By working together, it will yield a continually improving Army.

"We join in expressing our pride in today's Soldier and our confidence that all members of the Army team will do their part to assure that the Army is ready to meet its demanding mission."



President Harry Truman was distantly related to President John Tyler.

## WAGON WHEEL RESTAURANT

509 HARRIS AVE.

**THURSDAY SPECIAL**

Turkey & Dressing  
Giblet Gravy  
Cranberry Sauce  
2 Vegetables  
Coffee or Tea

**\$2.99**

FOR TAKE OUT ORDERS CALL ... 875-5752