

## New People At Burlington

John A. Street recently transferred to the Raeford Plant of Burlington Industries from the Burlington Glass Fabrics Plant in Altavista, Va. as a maintenance supervisor.

He served in Industrial Engineering in addition to maintenance after joining B.I. in July 1980.

Before this, he served in the Army for four years and is still in the active Army Reserves with the rank of captain.

John is a native of Fredericksburg, Va. He is a V.M.I. graduate

with a B.S. degree in civil engineering and holds a Masters degree from the University of Southern California.

He, his wife and four children will make their home in Raeford.



John A. Street

SOCIALS -- 875-2121

**DANIEL H. DeVANE**

**N.C. HOUSE OF REPRESENTATIVES**  
Pg. Political Ad

## Blakney-Bratcher Couple Married In Charlotte

Cinderella Bratcher and Ervin Dexter Blakney were united in holy matrimony on Saturday, June 26, at Friendship Baptist Church in Charlotte. The Rev. C.D. Steger officiated at the 4:00 p.m. ceremony.

Miss Bratcher is the daughter of Mr. and Mrs. Roscoe Bratcher who reside at 1949 Tyler Town Loope, Raeford. Mr. Blakney is the son of Mr. and Mrs. James C. Blakney Sr. who reside at 113 Booker St., Wingate.

Mr. Gerada Straud rendered music on the organ while Mrs. Bernice Moore sang. Mr. Charles Nelson accompanied Mrs. Cynthia Monroe and Mr. Charles Patton on the piano during the reception while they harmonized "Endless Love" during the cutting of the wedding cake and toasting of the bride and groom.

The bride wore a long white gown of peau de soie finished organza over taffeta. The gown was designed with a modified empire bodice and long slim traditional bridal sleeves. The yoke, front, and back had an Irish cluny lace insert with a lace ruffle outline. A ruffle also enhanced the wrists. Seed pearls were used lavishly on the bodice lace patterning. The very full bias cut skirt held an attached chapel length train. The front design held an insert of crystal pleats, outlined in lace. Lace motifs were used on the skirt and train. A very full wide schiffli lace border outlined the hem line. Her headpiece was a Juliet band with matching lace, seed pearls, and tiny flowers. A finger tip illusion was attained in border lace and a blush veil complemented the total look. She carried a cascade bouquet of silk white roses with daisies.

The maid of honor, Shely J. Bratcher, sister of the bride, and matron of honor, Mrs. Betty R. Walton, of New Port News, Virginia, wore a soft pastel lilac print and pink blousy bodice dress with an elastic waistline and flowing skirt of Chiffon underlined with taffeta. A flowing floral printed attachable cape also enhanced the dress at the neckline. A halo of soft lilac and pink net was worn halfway the face. They carried a full bouquet of multiple flower arrangements.

The attending bridesmaids wore a solid pastel lilac blousy bodice dress with an elastic waistline and

flowing skirt of Chiffon underlined with taffeta. A printed floral flowing attachable cape also enhanced the dress at the neckline. They also wore a soft lilac net halo that was worn half way the face. They all carried a full bouquet of multiple flower arrangements. The bridesmaids, flower girl attendants, and bride's mother's dress were fashioned by Mrs. Annie B. Howie of Charlotte. Bridesmaids were: Mermistien Blakney, Wingate; Jennifer K. Bratcher, Raeford; Mrs. Linda B. Brown, Fayetteville; Cheryl Buchana, Charlotte; Darlene Cunningham, Charlotte; Mrs. Evelyn Dillard, Charlotte; Josephine King, Raeford; Mary McKnight, Concord; Delois McLaughlin, Raeford; Mrs. Linda Thomas, Greensboro.

Miss Teneka Brewington served as the Jr. bridesmaid. She wore a floor length soft pastel lilac dress of chiffon underlined in taffeta. The dress contained a modified empire waist with puffed sleeves and lace. A floral printed pinafore of pastel lilac made of chiffon enhanced the dress with full pleated tucks that extended from the waistline to the hemline. She carried a bouquet of pink carnations and babies' breath.

The flower girls wore the same styled dress as the Jr. Bridesmaid in colors of pastel pinks and in pastel lilacs. They were Shanna Bruce, Sharita Bruce, Kimberly Bratcher, and Kimberly Kelly. The ring bearer, Travis C. Bratcher, was dressed in white.

James C. Blakney Jr. (brother of groom), served as best man and Mandrell Brewington, as Jr. groomsman. The groomsmen were:

Keith Bailey, Charlotte; Robert Brace, Wingate; Roderick Brace, Wingate; Gary Bratcher, Raeford; Jerry Bratcher, Raeford; Marshall McRae, Red Springs; Clifford Parr, South Carolina; Emmette Robinson, Marshallville; Willie Sledge, Fayetteville; Andrea Springs, Salisbury; Larry D. Taylor, Winnsboro.

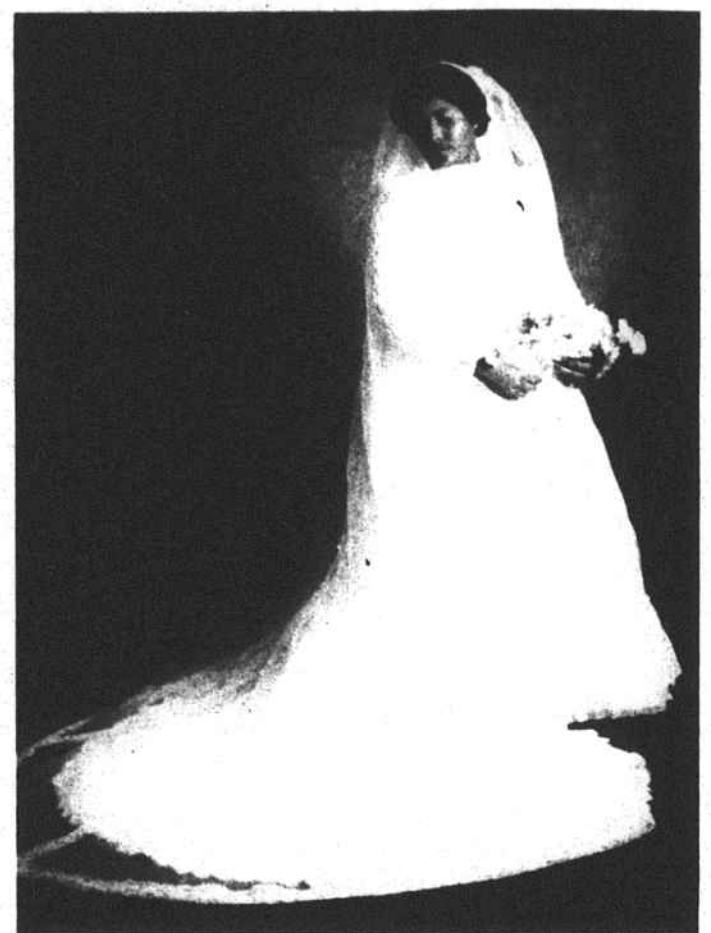
The bride's mother wore a floor length pastel pink, princess-style A-lined dress underlined in taffeta and covered in soft pink Irish lace with lacy full length sleeves. The groom's mother wore a floor-length, pastel, lilac flowing skirt and blousy bodice top with full-length sleeves.

The reception took place at the Friendship Baptist Church Fellowship Hall following the ceremony.

Prior to the wedding the bride was honored with several showers including fine china, lingerie, kitchen and miscellaneous.

Mr. Blakney is a graduate of Fayetteville State University and is employed with Charlotte City Parks & Recreation. Miss Bratcher is a graduate of UNC-G and is employed with Mecklenburg County Department of Social Services.

The couple will take a wedding trip to the Outer Banks of North Carolina and will make their home in Charlotte.



Mrs. Ervin Dexter Blakney

## 'Godspell' Being Given

The Duplin Outdoor Drama Society's production of the musical GODSPELL was to open Wednesday at 8:15 p.m. in the William R. Kenan, Jr. Memorial Amphitheatre in Kenansville. The musical features 10 members of the professional cast of THE LIBERTY CART, who will perform GOD-

SPELL on five consecutive Wednesday evenings through August 18.

GODSPELL is based on the Gospel according to St. Matthew.

The Duplin Outdoor Drama Society's production of GODSPELL is being directed and choreographed by David Thomas, with costumes designed by John Board, and musical direction by Brian Hoxie. Sheila Burhart is stage manager.

For ticket information or reservations for GODSPELL, call (919) 296-0721 or write: GODSPELL, P.O. Box 470, Kenansville, N.C. 28349.

## Hospital News

CAPE FEAR VALLEY  
Bryan Bullard - home Tuesday

## College News

John Oliver Jordan, son of Mrs. Faye Jordan of Fulton Street and Dr. Riley Jordan of Patterson Street, Raeford, has qualified for the spring semester dean's list at Wake Forest University. He is a rising sophomore.

**WAGON WHEEL RESTAURANT**  
THURSDAY & FRIDAY  
**SHRIMP BASKET**  
(about 20 shrimp)  
with FF. Slaw & Mushpuppies  
**\$3.99**  
Take Out Orders Call 875-5752

**CUSTOMER SERVICE**  
Dundarrach, N.C.  
**COMPLETE INSECT CONTROL**  
FROM THE HOME TO THE FARM  
• Federal Crop Insurance  
Route 1 Box 251-A Shannon, N.C.  
Phone 875-8912  
Nights - Jimmy Clark 875-5098  
Richard McMillan 875-2493

4 Reasons Why  
You Should

**VOTE  
BRATCHER**

July 27, 1982

**HONESTY, LOYALTY, PATIENCE  
& UNDERSTANDING**

**The People's Candidate**

Paid by Committee to Elect Bratcher  
Hoke County Commissioner



## RE-ELECT WILLIAM C. GAY

TO THE  
NORTH CAROLINA  
HOUSE  
OF REPRESENTATIVES

REPRESENTATIVE GAY IS YOUR KIND OF A CANDIDATE. HE HAS A TRACK RECORD AS A LEGISLATOR WHO SERVES THE PEOPLE.

REPRESENTATIVE GAY IS A MOTIVATOR WHO LEADS AND INFLUENCES OTHERS. HE CARES... AND A LOT OF PEOPLE LISTEN WHEN HE SPEAKS.

REPRESENTATIVE GAY BELIEVES IN AN OPEN AND RESPONSIVE GOVERNMENT. CLEAN AND EFFICIENT ADMINISTRATION OF PUBLIC BUSINESS, AND WIDE CITIZEN INVOLVEMENT.

PEOPLE IN GOVERNMENT AND EDUCATION HAVE BENEFITED FROM REPRESENTATIVE GAY'S LEADERSHIP. WE NEED TO KEEP HIS OUTSTANDING ABILITIES AND HIS COMMITMENT TO THE BETTERMENT OF MANKIND WHERE IT BELONGS...IN THE STATE HOUSE IN RALEIGH.

A DISTINGUISHED EDUCATOR WITH 30 YEARS SERVICE IN N.C. AS A TEACHER, PRINCIPAL, AND ASSISTANT SUPERINTENDENT OF SCHOOLS.

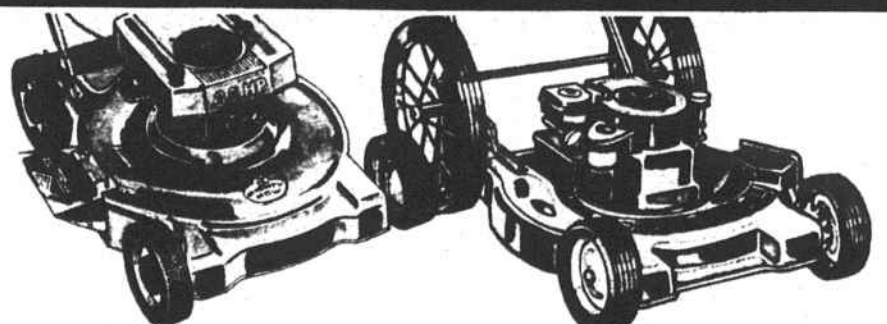
A COMMUNITY LEADER A WISE COUNSELOR A STEADFAST FRIEND A DECISION MAKER A VERY CARING PERSON WHO WAS WIDELY ACCLAIMED AS ONE OF THE MOST EFFECTIVE FRESHMAN LEGISLATORS IN THE GENERAL ASSEMBLY

Paid by Committee to Re elect William C. Gay Henry Meares, Treasurer



**REPRESENTATIVE GAY SERVES ON THE FOLLOWING HOUSE COMMITTEES:**  
COMMISSIONS AND INSTITUTIONS FOR BLIND AND DEAF, CORRECTIONS, EDUCATION, FINANCE, MENTAL HEALTH, AND THE UNIVERSITY BOARD OF GOVERNORS NOMINATING COMMITTEE AND THE FOLLOWING COMMISSIONS: THE EDUCATIONAL COUNCIL FOR EXCEPTIONAL CHILDREN, ALIEN LAND OWNERSHIP, COMMISSION ON CHILDREN WITH SPECIAL NEEDS, AND THE MENTAL HEALTH STUDY COMMISSION.

## EASY MONTHLY PAYMENTS!



**SAVE \$31.95!** 22" Lawn Mower with Dependable 3 1/2 HP Briggs & Stratton Engine Includes Two Baffles and Folding Handle

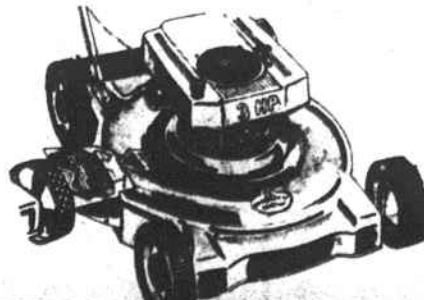
REG. \$259.95 **\$228**

**SAVE \$31.95!** Hi-Wheel Lawn Mower with Two 16" Spoke Wheels Offers 22" Cutting Width and 4 HP Briggs & Stratton Engine

REG. \$329.95 **\$298**

**SAVE \$21.95!** Lawn Mower with 20" Cutting Width Has 3 HP Briggs & Stratton Engine & 1" to 3" Adjustable Cutting Height

REG. \$219.95 **\$198**



A MacSAVER ACCOUNT MEANS EXTRA CONVENIENCE FOR YOU!

**Heilig Moyers**  
FURNITURE  
112 Harris Avenue  
RAEFORD, N. C.