

Around Town

BY SAM C. MORRIS

The weather is still hot and as I write this column Monday afternoon, the thermometer is on 90 degrees in the shade. We are still having the afternoon thunder-showers, but not as regularly as a week ago.

We can expect this kind of weather for the next month and then maybe the nights will be cooler and we can save some energy costs.

A feature story appeared in *The Fayetteville Times* observer on Sunday, August 8. The title of the feature was "Babe's Bat Boy One Great Fan." I didn't see it on the day it appeared, but received a copy from good friend Maurice Fleishman of Fayetteville, along with a letter.

The story was about Maurice and his days as a youth in Fayetteville when Babe Ruth was playing with the Baltimore Orioles. The title of the article will tell you what Maurice did when they came through Fayetteville and played an exhibition game. The "Babe" hit his first home run in that game.

Fleishman helped get a historical marker honoring Babe and the place of the homer.

The article also brings forth his part in getting the Boston Braves and Babe Ruth to play in Fayetteville in the 1930s. I will never forget the game because I was in attendance at the old Highland Park. The crowd was so large that they encircled the field. One spectator was hit by a foul ball from the bat of Ruth and I don't believe he cared because he could always say what hit him.

State College played the Braves that day and a left-handed pitcher named Freeman struck out the Babe. I believe that was the high point of his baseball career.

Yes, Maurice Fleishman lives baseball and it will be bad when the people like him are not here to bring back these fine moments.

A letter was attached to the article and is as follows:

To Sam C. Morris:
Sam, since you are Mr. Baseball in Raeford, I thought you might like the write-up in Sunday's *Fay. Times* Ob. Sam, "Around Town" in *The News-Journal* is one of my favorite columns. Give my regards to the Dicksons, Gatlins, Ken McNeill, Lawrence McNeill; in fact everybody in Hoke County. I love them all, God bless them.

Maurice Fleishman

Thanks Maurice, for the feature article. I enjoyed it very much. The only thing wrong with the entire thing was calling me Mr. Baseball. There are many people here in Hoke County that are more Mr. Baseball than I am.

Come to see me the next time you are over this way.

After the first primary election I ran the figures and percentages for voting in each precinct. Since I was out of town during the second primary I decided to figure out the vote for the primary.

The figures are amazing in that some precincts didn't take much interest in the second primary compared to the first. Others cast almost as many votes in the second as the first, percentage wise.

The total vote for the second primary was 3,716 against 5,009 in the first. Of course you must remember that only Democrats were voting in the second primary. The percentage for the total vote was 45% in the second primary compared to 60% of Democrats voting in the first primary. There were 80 absentee ballots cast.

The voting by precincts is as follows:

- Allendale - 224 - 111 - 49%
- Antioch - 676 - 308 - 45%
- Blue Springs - 766 - 398 - 52%
- Buchan - 321 - 115 - 35%
- McCain - 535 - 170 - 31%
- Puppy Creek - 564 - 216 - 38%
- Raeford 1 - 1184 - 564 - 48%
- Raeford 2 - 637 - 357 - 56%
- Raeford 3 - 672 - 266 - 39%
- Raeford 4 - 805 - 335 - 41%
- Raeford 5 - 907 - 438 - 48%
- Rockfish - 397 - 137 - 34%
- Stonewall - 570 - 221 - 38%

By County Commissioners

S. Hoke Elderly's Housing Backed

A Plan For Togetherness: The New First Baptist Church

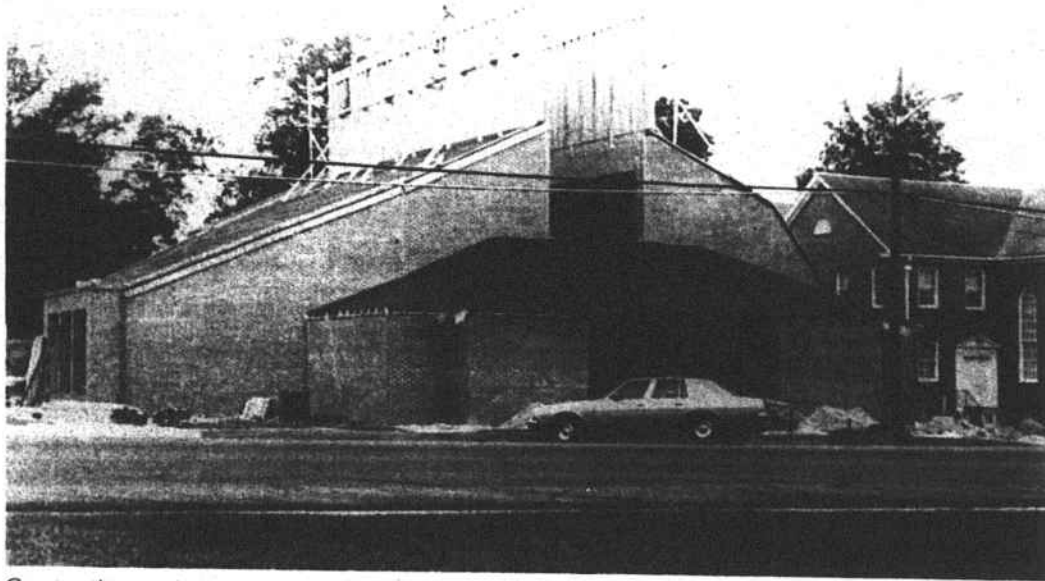
With thoughts of togetherness and a practical leaning towards needed space, the First Baptist Church of Raeford is constructing a new church building next to the old one. Mr. Billy Beaver, pastor of the church for five years, talked about the hopes for the new building as the sounds of construction provided a background.

The church is being built through the management systems of Church Building and Design Systems of the Carolinas for an estimated cost of \$425-500 thousands. Among the other funds available, the church sold church bonds to raise the needed funds.

Standing in the area where the pulpit will be, Mr. Beaver said the additional space for the congregation will continue and increase the brotherhood feeling of the church. The congregation, when seated for service, will not be farther than 47 feet from the pastor's pulpit. This seating arrangement, which is rather like a semi-circle on the main floor, is designed for better acoustical effects.

A new idea is planned for the church choir. Traditionally, the choir had been seated directly behind the pulpit. However, in the new building, the choir will be to the left of the pulpit; this allows for a more close church family feeling.

Over the 8087 square feet cover-



Construction continues on the new First Baptist Church as the older church continues in the picture of things.

ing the main floor, will be seven skylights to take advantage of natural light. Pedestrians on Main Street will be able to view the 14' x 30' faceted glass window in which will be pictured a large cross. Another cross is planned to be placed on the inner wall dividing

the main floor from the administrative offices. In effect, it will appear as the image of the large cross in the window, a sort of shadow on the wall.

More and more newly constructed churches are using hardwood ceilings. Mr. Beaver said the

effect is give an exalted sense to the congregation. The ceiling leads the viewers' eyes to the window with the cross and from there to soar where it may.

Construction plans for the building include an area for the administrative side of the church. As indicated earlier, it will be directly behind the main floor. The administrative area will house offices and other rooms, including the pastor's study.

As an influence of the times urges, the church chose faceted glass windows for economic reasons. The faceted glass has an equivalency of 8-10 inches of fiberglass insulation. Another more reflective thought about the efficiency of the windows, it is strong enough to sustain the vandalistic attack of sledge hammer.

The development of the construction site began on May 2, 1982. Pastor Beaver is looking forward to a dedication service for the new complete church sometime after October 1. For now, the church designed by Lawrence B. Evans, architect from Asheville, continues to rise from its foundation, while the old building graciously lives on.

BI Plant Manager Named

Changes in management at the Raeford Plant have been announced by Menswear Division Staff.

Cecil Bond has been named Menswear Division product development manager and will be working out of the Clarksville Division Offices.

William (Bill) Archer has been named plant manager succeeding Bond.

Archer has most currently filled the position of production manager at the local plant after having served as Weave Mill superintendent since his transfer to the plant in September 1977.

Archer joined Burlington as a manufacturing trainee in 1967 at the Lexington Worsted Plant. Since that time he has held positions as supervisor in all yarn mill positions

and Department Manager of Preparation in the Lexington Plant.

He was reassigned as superintendent of Sample Area in Clarksville, Va., in 1971. He has also held positions as plant superintendent at Fayetteville Weaving, preparation superintendent at Mayflower Plant in the Sportswear Division, and plant superintendent at South Hill, Va.

Archer, a native of Narrows, Va., graduated in 1967 from Virginia Polytechnic Institute with degrees in management and in economics.

He is married to the former Harriet Johnson, also from Narrows.

They have two daughters, live in Raeford and attended the Methodist church.



William Archer

K-4 Attendance Areas Announced

Following are the new K-4 school attendance areas approved by the Hoke County Board of Education effective with the start of the new school year beginning September 1.

Students whose driveways open on Vass Road or who live north of

Vass Road will attend Scurlock School.

Students whose driveways open on N.C. 20 or live northeast of N.C. 20 will attend Scurlock.

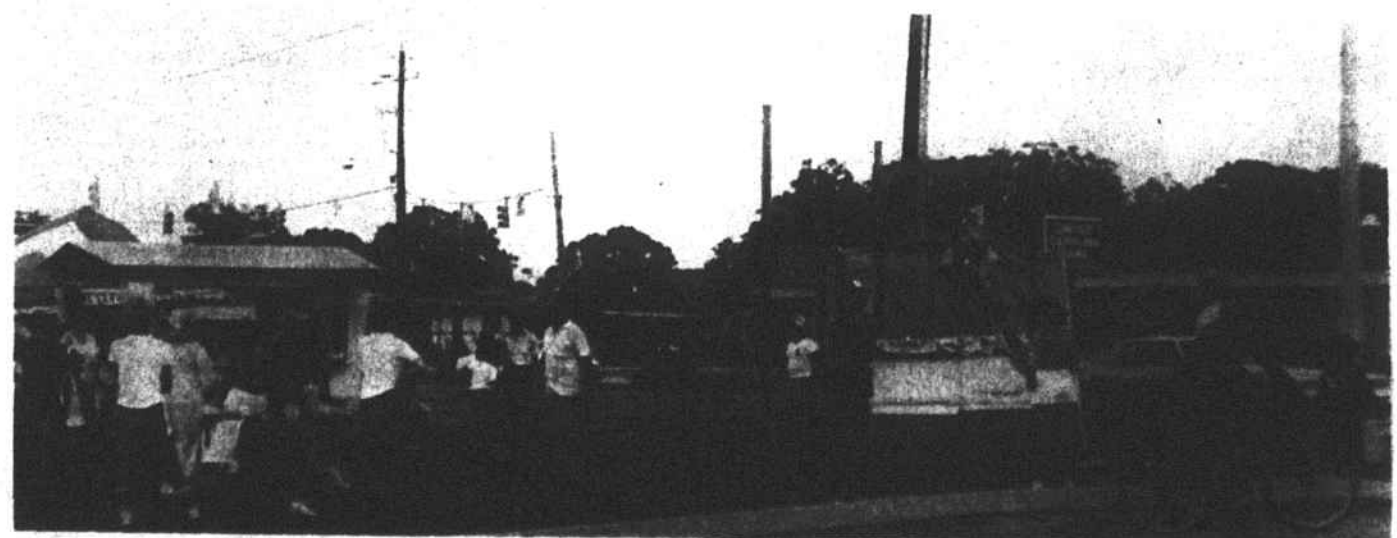
Students whose driveways open on SR 1403 or live northeast of

1403 (Shawtown) will attend South Hoke School.

Students whose driveways open on U.S. 401 or southeast of 401 and south of N.C. 211 bypass will attend South Hoke School.

Students who live northwest of U.S. 401 or southwest of Vass Road will attend West Hoke School.

Students who live in the central district will attend McLaughlin School.



BAND BENEFIT -- These are some of the visitors who came to the entertainment Saturday to help raise money for the Hoke County High School band. [Staff photo by Henry Blue].

The Hoke County commissioners Monday night adopted a resolution supporting establishment of 51 units for housing elderly people in the Rockfish - South Hoke area. Commissioner James A. Hunt abstained from voting because he owns land under consideration for purchase for the project. Commissioner Neill McPhatter was absent from the meeting because of illness.

The resolution, presented by the Lumbie Regional Development Association, Inc., also has the commissioners requesting that the U.S. Department of Housing and Urban Development appraise the proposed housing needs for the Rockfish community to better serve the needs of the senior citizens in preserving close family ties and tenant identification with the area of their residences.

The LRDA, the resolution explains, is seeking assistance through HUD to establish the 51 units.

The resolution provides that the commissioners support the county-wide Raeford Housing Authority in its commitment to provide effective local management for Rockfish/South Hoke Apartments in order to better service the needs of the elderly.

It also says the commissioners concur in the findings of the housing authority that the long range success of the apartments would be assured through the Rockfish/South Hoke proposal for rural sites instead of the traditional urban setting.

In other business at the mid-month meeting, the commissioners authorized provision of more space for the sheriff's department and a salary adjustment for John W. Wood of the department who recently was promoted to lieutenant from the rank of sergeant and also serves as assistant supervisor for the department's Uniform Division. The request was made by Sheriff Dave Barrington. The sheriff said Wood's current pay is \$11,358 yearly and that he would like for Wood's salary to be increased to \$12,419. Wood succeeds Charles Wilson in the position. Wilson's pay was \$12,419.

In the space matters, the commissioners voted to allow the sheriff's department to use space in the former Raeford Motor Co. body shop building and authorized \$750 for making improvements to the building to fit the department's needs. The commissioners also approved a long range plan to provide part of the space in the Courthouse Annex Building to the sheriff's department. Both buildings are on Edinborough Avenue opposite each other and near the corner of North Main Street.

After holding an executive session on another land matter, the commissioners agreed to buy an acre of land for \$2,700 from Roy Brock for a new site for the Rockfish Community building, which is to be relocated, and to take options on six more acres from Brock for a total of \$1,200. The funds will come from the county's federal revenue-sharing funds.

The six acres would be for the possible development of recreational facilities, and the development is subject to the county getting a federal Community Development block grant, also for help in relocating the building.

The commissioners and Raeford city officials met jointly on a requested change in landfill operational charges. The decision, however, was made to delay action pending a study by a committee of two representatives of the county commissioners and two of the City Council. All members of the City Council, Mayor John K. McNeill, Jr., City Manager Ron Matthews, and City Public Works Director Bill Sellers, who also is assistant city manager, participated in the discussion.

Clyde Leach, the landfill contractor for Pick-Up Sanitation Service, has written County Manager James Martin that the landfill hours were 8 a.m. to 5 p.m. Mondays through Fridays and 8 a.m. to noon Saturdays when (See HOUSING, page 15)