

In Weeks To Come

Meetings

Business Girls -- Extension Homemakers Club meeting, Dec. 15 at 12:10 p.m. Dec. 16 at 12:40 p.m. at the Lester Building.

Raeferd Kiwanis -- Club meets every Thursday at 6:30 p.m. at the Raeferd Civic Center. The meetings are open to members and guest.

Hoke Co. -- NAACP branch to hold annual meeting at Silver Grove Baptist Church Education Bldg. Thursday at 7:30 p.m. Public is invited.

Tobacco Meeting -- A program on no net cost tobacco program and its effect on the Hoke County farmer will be held Monday, Dr. William D. Toussaint, Extension Economist at N.C. State University will be the featured speaker. To be held at County Extension Office at 7:30 p.m. People interested in tobacco are encouraged to attend. The public is invited.

PTA Meeting -- The Scurlock School fourth grade chorus will present a Christmas program during Monday's PTA meeting in the school cafeteria at 7 p.m. Officers will be installed.

Three Wee Kings -- The Raeferd First Baptist Church Children's Choir will present this musical fantasy at 7:30 p.m. Sunday. The presentation is open to the public and everyone is invited.

Christmas Parade -- The annual Raeferd's Merchant's Association Christmas Parade will begin on Main Street at 2 p.m. Saturday. The parade route will follow Main Street

camellias, pansies and many early spring flowering plants will be blooming.

Christmas Program -- The second annual Christmas Program for foster children will be held at Center Grove Baptist Church Dec. 11 at 7:30 p.m.



day concert to be presented on Monday, Dec. 13 at 7:30 p.m. at Lumberton's Historic Carolina Theatre. The Chorale will perform such varied works as the American Folk Cantata An Appalachian Nativity, selections from Leonard Bernstein's choral masterpiece The Chichester Psalms, and songs in celebration of Hanukkah. The special guests for this concert will be the Sandhills Consort, from Laurinburg.

Gardening Program -- The Sandhills Community College Landscape Gardening Program will hold its 13th Annual Open House, featuring a patio garden display Friday from 1 p.m. to 7 p.m. and Saturday from 11 a.m. to 5 p.m. at Heuette Hall. The public is encouraged to attend.

Colonial Williamsburg -- For a quarter century, one of the most anticipated and ageless delights of Colonial Williamsburg's holiday season has been nostalgic glimpses of Christmases past created by the Abby Rockefeller Folk Art Center. This year will be no exception when the museum's 25th annual Christmas exhibition unfolds Dec. 11 through Jan. 2 before appreciative audiences wistfully savoring the warm glow of bygone yuletides.

Gatherings

Gospel Choir -- McCormick Chapel Baptist Church, Red Springs, located at Duffie Station, will sponsor a musical Christmas Program on December 12 at 5 p.m. Groups from Raeferd and Laurinburg are scheduled to appear on the program.

21st Pastoral -- Eldress Louise K. Thomas and the members of the Mt. Calvary Church of God No. 1, will be celebrating her 21st Pastoral Anniversary, Dec. 5-12.

Service time 11 a.m. Sundays, nightly - 7:30 p.m. Everyone is invited.

Doings

GOOD DINING -- Cattle graze on a pasture on N.C. 211 in the Antioch community.

from Prospect Avenue to the Edinborough Center parking lot.

Orton Plantation Gardens -- Due to the lack of visitation during the winter months the gardens at Orton Plantation between Wilmington and Southport, N.C. will be closed during December, January and February. The Gardens will reopen on March 1st when

Wilmington Tour -- The Historic Wilmington Candlelight Tour will be held December 11 and 12 in Wilmington.

Choral -- The Robeson Civic Chorale will open its 10th anniversary season with The Songs Of The Season, a holi-

Christmas Cantata Performed By Hoke High Chorus Dec. 16

The Hoke High School Chorus and Chorale will present their Christmas Concert on December 16 at 8:15 p.m. in the Macdonald Gymnasium on the Hoke High School campus. A special feature of the concert this year will be the presentation of *Christmas Cantata* by Daniel Pinkham.

This is a major work in three movements accompanied by brass, choir and organ.

The organist for the concert Paul Long is well known in the Sandhills as a concert artist.

He received his masters degree in organ performance from the Julli-

ard School in 1977. He is currently organist at the Church of Wide Fellowship in Southern Pines.

The text of the Christmas Cantata tells of the great mystery of the birth of Christ and of the jubilation and wonder of the shepherds.

The composition is contemporary in nature, employing typically 20th century harmonic progressions and rhythmic diversity. Dr. Pinkham, the composer, is organist at King's Chapel and a professor of composition at New England Conservatory, Boston, Massachusetts.

The work was published in 1958 and has been performed by many

college choirs and professional ensembles in recent years.

Other highlights of the program include a Renaissance procession also accompanied by brass and organ.

The Chorus and Chorale will perform Christmas Music from different periods of music history, as well as more traditional Christmas music.

On the lighter side, the Chorus and Chorale will offer a jazz arrangement of some familiar Christmas favorites.

Please make plans to attend our concert on December 16.

Chorus Featured At PTA Meeting

The Scurlock School fourth grade chorus will present its annual Christmas program on Monday, Dec. 13, in the school cafeteria at 7:00 p.m.

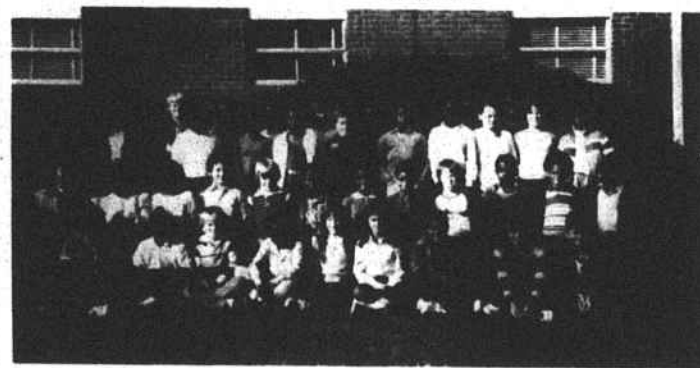
The official installation of the Scurlock School PTA officers will take place at the gathering.

John D. McAllister, Associate Superintendent of Schools, will install officers.

Charter members and parents are invited to attend, and the public is invited.



The Scurlock Fourth Grade Chorus will present a Christmas concert Monday at 7:00 p.m. December 13 in the Scurlock Cafeteria. Parents and friends are invited. Mrs. Doris Austin, director; Mrs. Maxine Colston, accompanist.



The J.W. McLaughlin Fourth Grade Chorus under the direction of Mrs. Doris Austin; with Mrs. Linda Huff accompanying will present a Christmas Concert Tuesday at 1:30 p.m. December 14 in the McLaughlin Cafeteria. Parents and friends are invited.

Christmas Parade Saturday 2:00 p.m.

A.A. Meetings Wed. 8 p.m. Nursing Home Dining Room

Events

Pancakes -- Raeferd Kiwanis Club Annual Pancake Supper will be Thursday December 9. All you can eat for just \$3. All proceeds will go to Hoke County charities. Tickets on sale from members or at the Gibson Cafeteria from 5 p.m. to 8 p.m. Thursday.

Christmas Cantata -- The Hoke High School Chorus and Chorale will present a Christmas Concert on Dec. 16 at 8:15 p.m. in the Macdonald Gymnasium on the school campus.

Call The News-Journal or bring calendar items to the office before noon on Monday.



WANTS A HOME -- This little guy at the Hoke County Dog Pound wants to be somebody's pet, and he's got the talent for it. County Dog Warden William Hales advises. The pooch is a year old and is a mixture of Chihuahua and Feist. To reach Hales, call the County Health Department.



ADOPTABLE PET -- This is a good natured, 3-year-old male Boxer-Bulldog at the Hoke County Dog Pound and he's available for adoption. He'd make somebody a good pet, says County Dog Warden William Hales, who is posing him for the photographer. Hales can be reached through the Hoke County Health Department.

You and Your Pet

Dear Doctor: What is pet/human bonding? Somebody mentioned it at a neighborhood coffee the other day but nobody seemed to know much about it.

Answer: Pet/human or animal/human bonding refers to the bonds that tie pet and owner together in a relationship that benefits both by improving the quality of life. Recent research has identified several areas in which the bonding makes a significant contribution to health and well-being:

-the love a cat or dog lavishes on its owner is constant and provides an important source of security.

-a pet gives a child coming home from school to an empty house or a person living alone, a tail-wagging companion happy to see him come home.

-a pet is a source of the laughter

that is an essential ingredient for a healthy lifestyle.

-owning a dog can improve a person's fitness level by encouraging outdoor exercise. Walking a dog also is a good way to meet people.

-a pet is an outlet for expressing affection. Stroking and talking to a pet is non-threatening and is a fulfilling way of lifting depression and easing feelings of disappointment.

-relaxed talking to and stroking a pet lowers blood pressure.

-confirming evidence shows that people who have heartattacks live longer if there is a pet in the house that encourages their exercising together.

(Do you have a question about pet care? If so send it to "YOU AND YOUR PET," 112 Johnston Street, Smithfield, N.C. 27577).

Teenage Pageant Delayed

The Miss Teenage Hoke County Pageant, originally scheduled for December 4, will be delayed until January 15, 1983 due to an overabundance of holiday festivities also scheduled in December.

The pageant will be held in J.W. Turlington's Auditorium at 7:30 p.m.

Interested contestants should pick up their applications at the Parks and Recreation Office or from Carla Myers.

The first 20 girls who return their applications along with a minimum of \$15 (collected from community people who wish to sponsor them) will be eligible to

participate.

Additional sponsors may also be collected and an award will be given to the girl who receives the most support through sponsor money that she has collected.

The pageant is sponsored by the Hoke County Youth Council who began the project last year in hopes of making it an annual event.

Door prizes will be awarded and entertainment will also be provided.

Last year's Miss Teenage Hoke County, Tina Martino, will be on hand to crown the new Miss Teenage Hoke County for 1983.

See Santa

See Santa

SEARS Annual Christmas Party

Monday And Tuesday
December 13th & 14th
7-9 p.m.

Refreshments For Everyone

ELWOOD AVE.

The Great Raeferd Giveaway

\$100.00 GIFT CERTIFICATE
Being Given Away Each Week Through Christmas Eve

DRAWING EACH SATURDAY 12:00 NOON

Register Often At Any Of The Following Merchants

Western Auto	Shoe Chest
Hoke Drug	Howard Clothiers
The Treasure Chest	Howell Drug
Hoke Typewriter Service	Michael's of Raeferd
Lundy's Shoe Shop	Evelyn's Sample Room
Theresa's Dress Shop	Raeferd Clothing Outlet

Southern National Bank
United Carolina Bank
Heritage Federal Savings and Loan

All Support The Great Raeferd Giveaway

Shop & Save With These Fine Stores Where Service Is A Standard Not An Option!

HERITAGE FEDERAL Savings & Loan Association

113 Campus Ave.
Raeferd, N.C.
and Other Locations in N.C.

MEMBER FDIC

Equal Housing Lender

Hours: 9-5 Mon. thru Fri.

FREE

NOW CHECKING WITH INTEREST. at 5 1/4%

- NO SERVICE CHARGE • NO MINIMUM BALANCE
- OVERDRAFT PROTECTION AVAILABLE (w/Approved Application)
- FIRST 200 CHECKS FREE (Walter Style Safety Paper)

Ask Us For Details. Call 875-3061