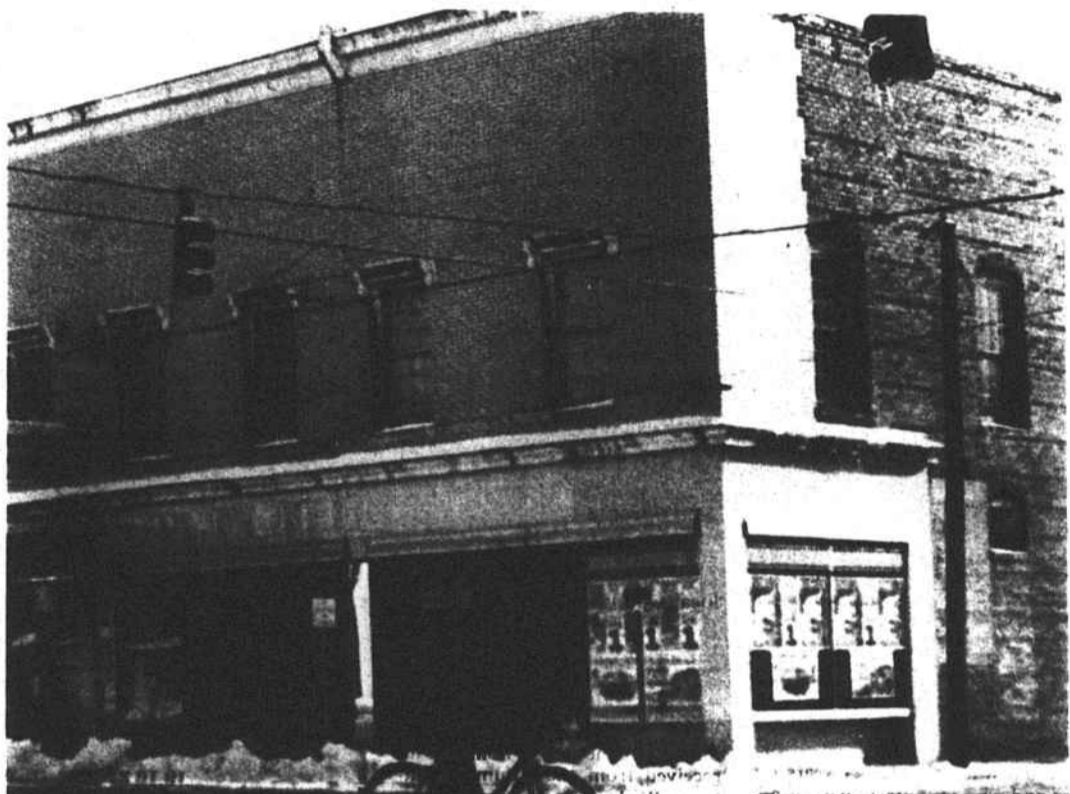




Tunneling through
After Thursday's unexpected accumulation of 6 inches, Friday was a day for tunneling a path through to the various businesses who decided to open as usual.



Pawprints in the snow
Slowly and carefully he goes, making a deep path across the snow, heading for a warmer and dryer place to settle down.



OPEN 9:30 A.M. - 9 P.M. M-S SUN 1-6 P.M.



Specials Of The Week

Assortment
ladies'
Spring
DRESSES
Reg. 15.97 - 27.97

SALE
**\$10⁰⁰ -
\$20⁰⁰**



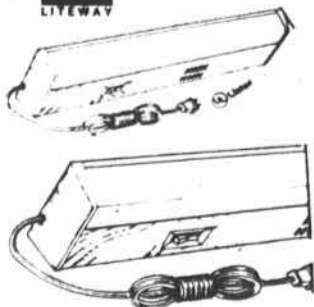
**SAVE-A-MATIC
MOPS**
Reg. 9.99

SALE **\$8⁰⁰**



\$3⁴⁴ Reg. 4.99

PLASTIC FENCE
Save \$1.55! Expandable...
forms fence 10" high & 10'
long. Won't rust, warp or
break.



Regular 7.99 **\$5⁸⁸**
**UNDER
CABINET
LIGHT**

18" Completely assembled &
wired light. 8' Cord set & hang-
ing hardware. 16 Watt bulb not
included.



Regular 14.00 **\$7⁹⁹**
**48-INCH
SHOPLIGHT**

Versatile energy savings utility
light with cord, plug, chain kit
and 40-watt lamps.

**KENDALL
MOTOR OIL**



10W 40 WT **84¢**
Reg. 1.09



Mastering the slush
Biking through the ice and snow on Main Street could have been a little slippery but not for this youngster who battled it all just to get out of the house. Schools were closed Friday.

FARMER FRIENDS
Designate Your 1983 Tobacco
to the
Big Lumberton Tobacco Market
6 BIG WAREHOUSES TO SERVE YOU

- Star
- Liberty
- Cooperative



- Smith-Dixie
- Hedgpeth
- Carolina

**GET TOP DOLLAR FOR EVERY POUND
OF YOUR TOBACCO CROP IN LUMBERTON**

W.C. (Bill) Williford
The Border Belt's Best

Raeford - Hoke Village
Save with Sky City 401 By Pass/Cole Ave. Raeford, N.C.