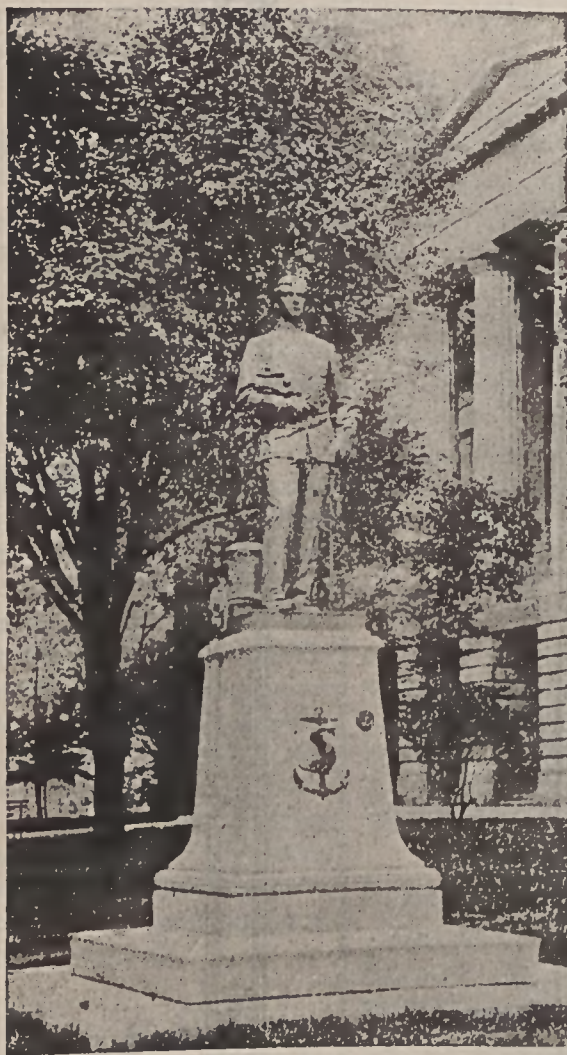


Points of Interest in Raleigh, N. C.



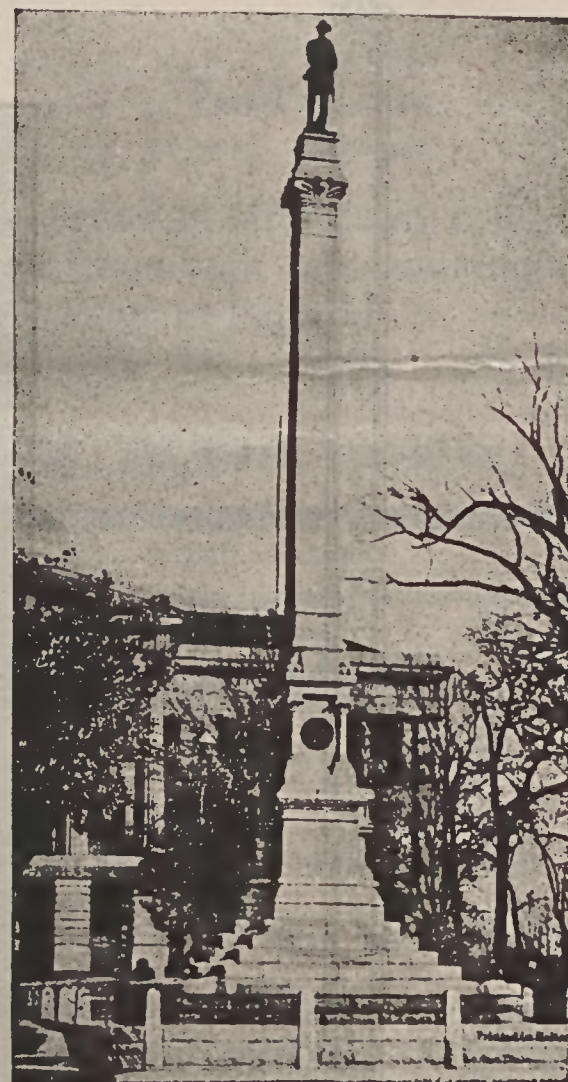
THE STATE CAPITOL.



WORTH BAGLEY STATUTE.

Points of Interest at Raleigh.

Raleigh offers many attractions to visitors. There are numerous public buildings, including those of eleven State departments and institutions, representing over \$3,000,000 in buildings alone. Among the points of interest are: The Capitol, with its statues and monuments. Governor's Mansion. State Museum and Hall of History. State Agricultural Department. Supreme Court, library, and portrait gallery. State Library and Hall of Fame. Confederate Soldiers Home. Central Hospital for Insane and Epileptics. State's Prison. State School for the White Blind. State School for Negro Deaf-Mutes and Blind. State Agricultural College. State Experiment Farm. State Poultry Farm. Methodist and Roman Catholic orphanages. Christ Church Rectory, formerly the State Bank of North Carolina. Ranev Library. Pullen Park, its Zoo and the house in which President Andrew Johnson was born. House in which William Gaston wrote the State song, "The Old North State." Municipal Building and Auditorium. Rex, Leonard, and St. Agnes' hospitals. National, Confederate, Old or City, and Oakwood cemeteries. St. Mary's School, Peace Institute and Meredith College; all for young women. Country Club. Woman's Club. Capital Club. Elks Club. Electric Park. Electric power plant and sub-station.



CONFEDERATE MONUMENT.

CONDENSED FACTS ABOUT RALEIGH.

Raleigh, purchased by the State, was made the capital in 1792. Area, four square miles. Elevation above sea level, 363 feet. Population by last census, 19,218; increase in ten years, 40 per cent. Assessed value of real estate, \$12,000,000; increase in three years 33 1-3 per cent.

Number factories, 65; operatives, 1,400; annual wages, \$600,000; capital, \$2,500,000; value annual products, \$2,500,000; increase in ten years, 119 per cent.

Three National, two State, two Savings banks; total deposits, \$8,000,000.



NEW ADMINISTRATION BUILDING.

Post-office receipts in 1911, \$126,000. Miles street railway, 14. Amount building constructions in 1911, \$1,446,000. Four railways: Southern, Seaboard Air Line, Norfolk Southern, Raleigh, Charlotte and Southern.

Electric power from three rivers and auxiliary steam plant, total 52,000 horse-power; electric power center of eastern North Carolina. Largest population center between Washington and Atlanta; 800,000 people and 66 good towns in radius of seventy-five miles. People from half the counties can come here, attend to business, and return home the same day.