

MR. CHATHAM RESIGNS TO REPAIR DAMAGE TO FLOOD-SWEPT FACTORY

Winston-Salem, July 26.—Hon. H. G. Chatham has decided to withdraw from the race for the State Senate...

Governor R. A. Doughton was one of the most eager men for Mr. Chatham to make the race...

This decision was made known in a letter received from Mr. Chatham by Chairman R. G. Stockton...

Dear Sir: When I reached Elkin on Monday last and saw the tragedy of its destruction—a tragedy so sudden and appalling as to make me reverential, rather than resentful...

I am therefore compelled by these considerations to tender to you my resignation as candidate of the Democratic party...

AEROPLANE SERVICE AND AERIAL ARMIES

New York, July 21.—An overseas aeroplane service between Europe and America and veritable bio aeroplane armies in the clouds on European battlefields are expected by a French aerial expert who talked about the probability today to materialize within the present year...

"There are going to be flocks and flocks of aeroplanes used on both sides and aerial battles, with aeroplane armies, will become important and features of the great war," said he.

"How to transport guns and ammunition by air is a matter that is receiving expert attention now. Aeroplanes are being used that can carry a five hundred pound bomb and they are so steady and safe that when the bomb is dropped the pilot does not see any lightning of the lead. To be able to transport light cannon in this way from one part of the line to another would be tremendous advantage and it is safe to prophesy that this will be done before long."

WILKES COUNTY COMMITTEE SENDS OUT CALL FOR AID

Richmond, Va., July 21.—S. T. Morgan, of the Virginia Carolina Chemical Company, tonight sent word to Governor Locke Craig of North Carolina authorizing him; if there is any real suffering and need for outside contributions for flood sufferers in North Carolina to draw on him for \$500 personally and \$500 for the company.

Winston-Salem, July 26.—With the southeastern floods virtually over, North Carolina citizens have turned to the work of relief and supplies of food and other necessities are being into devastated district from half a dozen cities in the State. In addition, Representatives Page and Webb have called the War Department's attention to conditions in the Yadkin valley and Secretary Baker has ordered report from District Engineers, with a view of asking Congress for authorization to extend help to the sufferers if Federal action becomes necessary.

Conditions are described as serious in Wilkes, Ashe, and Watauga counties, where many are said to be facing starvation. In North Wilkesboro a committee appointed by the mayor has sent out appeals for help. All food supplies are said to be exhausted or greatly curtailed, and with roads and railroads washed away the transportation problem is serious.

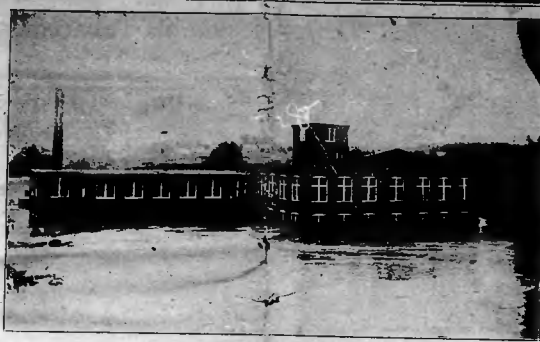
Flood victims in the Asheville district are being provided with food from that city and food on Motor trucks are leaving Charlotte at frequent intervals. Trains and packhorses are being sent to Chimney Rock section with supplies. Appeals for outside help have been sent out from Rutherfordton.

Two additional bodies were recovered from the Catawba river today near Belmont. It is believed now that the death list from the flood will be less than 100.

Reports today from the Chimney Rock section told of the killing of the family of Hiram Grant by a landslide down Bald mountain.

The arrival of repairmen sent to the flood districts are making rapid progress and prospects are that next week normal schedules will be arranged on railways. Raleigh, July 21.—Citizens of Raleigh, anxious to contribute to the relief of the sufferers from the western Carolina flood, have wired to Governor Craig suggesting the appointment of a central relief committee and asking the Governor to request newspapers to call for contributions.

Greensboro, N. C., July 21.—



This picture shows the plant of the Chatham Manufacturing Co. after the water had receded and as many laborers and teams as can be secured are now at work removing the mud, wet wool and hundreds of bales of wet paper blanket bags in places where they may be dried. All work in products, has ceased. It will require several weeks to put the mill in running order, so that orders for the famous Elkin blanket can be filled.



This picture shows the Southern Railway depot, entirely surrounded by water. The water, at its highest, stood about four feet above the platform of the depot. The contents of all cars standing on the siding, as well as all the freight stored in the depot, was greatly damaged. A force of men were put to work Monday after the flood, cleaning out the mud, which was nearly two feet deep.

Word reached here today from North Wilkesboro that many people in Wilkes, Ashe and Watauga counties were destitute and facing starvation, as a result of the flood, and appeals were made for outside help. In North Wilkesboro, a relief committee has been appointed by Mayor Spatcher and this committee is sending out a formal appeal for aid. All food supplies are either exhausted or short and with roads and railroads washed away the transportation problem is serious. Taylorsville is the nearest railroad point to North Wilkesboro where supplies may be sent. It is 21 miles over a mountain road between the two places. Moravian Falls is other point in that section in a similar situation.

The food supply at Wilkesboro and North Wilkesboro is sufficient for only a few days. General Superintendent Simpson of the Southern railroad, who walked up the Southern line

sixty-five miles to North Wilkesboro, is reported as saying it could be relayed 20 days before a train could be run into that place. Reports of complete loss of crops in Wilkes and adjoining counties continue to come in from remote sections and conditions are revealed even worse than at first reported. Absolute destitution exists and in many cases starvation is imminent. In Greensboro a relief fund for the flood sufferers was started late today and tonight nearly \$100 had been contributed.

North Wilkesboro, July 21.—So far no less than 14 are dead as results of the flood Saturday. A water spout struck just above comes the report that a boy by the name of Caudill, about ten years old, and two women were drowned. Manuel Hayes and entire family of seven on head waters of Roanoke river's reported lost. A water spout struck just above his home and entirely covered the house with all the family, not

one escaping death.

A landside on the south side of the Brasley Mountain is reported, which carried a house in which a man, his wife and four children lived and only the man and woman survive—the four children all were killed.

The main building of the Shell Chair factory is reported as having washed ashore near Ronda, about 10 miles down the river, still standing upright with the big chair that sat on the roof still there. It is thought that most of the chairs and other stock is intact. The car load of chairs that were just ready to ship has also been found.

Three houses and four cows were lost on Hechtos river by Mr. W. J. Palmer. The Moravian Falls Power and Milling Company, which operates a power plant roller mill and spoke and handle factory at Moravian Falls is almost a total loss. Their mill building, was swept away and a result the village of Moravian Falls and the

LETTIE FROM MR. W. L. BREWER (Special to The Tribune)

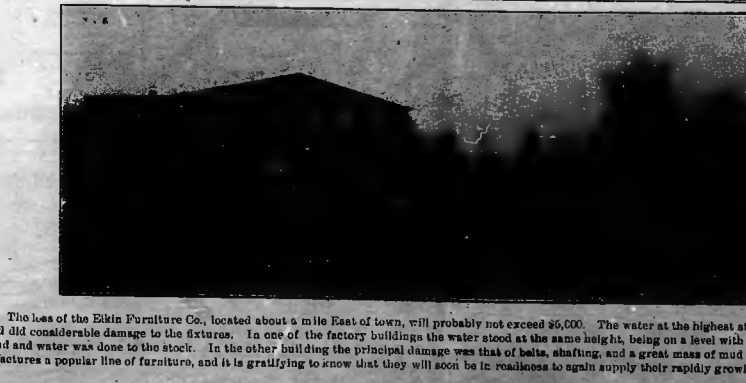
Res. farm, Ashboro, N. C., July 20.—The rain here last week culminated Saturday in the great flood that has visited this section in the last hundred years. This section of Walnut Grove township in Wilkes county, embrace the head waters of the Yadkin prong of Roaring River, with a watershed of at least 15 miles along the Blue Ridge, and at least 5 miles along Carter and Greenstreet mountains. There had been showers along during the week up to Friday night, when a regular down-pour of rain set in and the amount of rain fell on top up to about 6 o'clock, p. m., Saturday, when the freshet was at its highest, according to the report of the weather bureau office here, was 6.68 inches; the total rainfall up to Saturday evening was 9.81 inches. Roaring River, in this section, was about 1 foot higher than the previous known high water mark, according to what old people say, for the last hundred years. The damage to property runs up into the thousands of dollars, to say nothing of the loss of life. The damage is great all the way from Covenant Church, including the Masses

town of Wilkesboro is in darkness. Power was also furnished for the operation of many small industries, including the power for running the presses of the Yellow Jacket at Moravian Falls and the Patent in Wilkesboro. One of the most serious situations facing Wilkes is the loss of practically all the flour and corn mills, except the North Wilkesboro Roller Mill together with much of the wheat which had not yet been threshed, and with the most serious loss. The lumber dealers and factories who have lost heavily in lumber stock have called a meeting and organized a holding company which has for its object the conserving of as much as possible of the lost stock which has lodged in drifts down stream. They will gather it all together at some central point and divide it among themselves according to each individual's or company's loss.

Hillings, Messers, J. E. Billings, M. L. Bowers, A. J. Dillingham, W. C. Hutchison, W. R. Hutchison, W. C. Waddell, O. L. Smit, A. G. J. Dudley, M. F. Jones, S. H. Caudill, John Kennedy, Dan Shumate, Cleve Caudill, J. E. Walker, the lands in the famous "Long Bottoms" of Messrs. F. R. Alexander, S. T. Alexander, Robert Alexander, Hillyar Jones, Terry Jones, S. P. Jones, Jr. Also the lands of G. C. Alexander of the Basin Creek settlement, and the lands in the Blue Ridge mountains. The damage to these bottom lands is anywhere from \$30,000 to \$75,000. Several stacks of wheat and other grains were swept away. About 20 head of live stock—horses and cattle—were drowned. Two mill-cane a merchant mill of W. C. Waddell, and about 7 or 8 dwelling houses were swept away. The river all the way from the fork, at Covenant Church, to Basin Creek and on into the Blue Ridge mountains presents to the observer's eye the greatest destruction that has ever been known in this section. The banks of the river are stripped of nearly all vegetation and huge boulders have been dislodged from their long resting places. Once productive bottoms have been swept away and presents a scene of almost total destruction. The river, in many places, has left its old bed and cut it's way in great channels through the bottom. The destruction to growing crops is great. All along through the day and up to late in the evening great crowds of people could be seen coming and going, viewing the scene of the great destruction which the middle prong of Roaring River and its tributaries have wrought. Travel and mail have been stopped; business men are held up and can't get home. The mail from Breeters to North Wilkesboro, is entirely stopped. It will be several days before travel can be resumed, owing to impassable condition of the fords. There were great landslides in the mountains of the Blue Ridge. Great number of acres of corn, pasture land,



This big steel bridge, erected in 1913 by the sister counties of Surry and Yadkin, was swept away in the flood of July 15th. It landed only a few hundred feet below, but is tilted and warped so badly as to be of no value. The bridge was built at a cost of \$4,500, and at the time of construction was considered safe. The destruction by water, compared with the previous high-water marks. The new steel bridge that is to replace the old one is 10 feet higher, and 510 feet in length, not including approaches, and will be equipped with a double drive way and a center walk way. The new bridge will cost about \$20,000.



The loss of the Elkin Furniture Co., located about a mile East of town, will probably not exceed \$5,000. The water at the highest stood 27 inches deep in the office, and did considerable damage to the fixtures. In one of the factory buildings the water stood at the same height, being on a level with the office, and much damage to the factory was done. In the other building the principal damage was that of belts, shafting, and a great mass of mud and water. This company manufactures a popular line of furniture, and it is gratifying to know that they will soon be in readiness to again supply their rapidly growing trade.

including timber, and off engulfing the hollows and streams. Three persons, two women and a little boy, were drowned. One of the women and the little boy have been found. The woman was found Sunday lodged in a drift opposite Basin Creek church. The little boy was found late this evening. It will be a very sad day, indeed, for the husband who was away from home when he returns and finds his wife nowhere in the world and his little brother and everything dear to him swept away and gone, but such will be the case. On the west prong of Roaring River two mills and a store house were swept away and great damage done bottom and other lands, as well as to personal property. The damage done in this section is so great that an accurate estimate can hardly be given, but we believe a conservative estimate would place the total damage up to around one hundred thousand dollars.