

## DISTRIBUTE BIG AMOUNT

Total of \$543,933 Paid Out in  
Surry Through Social  
Security

### SINCE ITS BEGINNING

(By M. R. Dunnagan)  
Approximately \$543,933.00 has been distributed in Surry county through operation of nine of the ten divisions of the Social Security Act, from its beginning and through June 30, 1940, it is estimated, on a basis of official figures, by Charles G. Powell, chairman of the N. C. Unemployment Compensation Commission.

Normally, unemployment compensation, or benefits to workers temporarily out of jobs, is the largest item in the program, except in agricultural counties. The more and larger the industries a county has, the more jobless benefits it gets. In the 2½ years of benefit payments, through June 30, these benefits reached \$213,330.23, included in 31,848 checks issued to residents of Surry county.

Chairman Powell reports that State agencies handling phases of the Social Security Act cooperate with him in supplying figures of their activities, which gives him an accurate picture of distributions in counties of the State. These include the State Welfare Department, Mrs. W. T. Bost, superintendent, and Nathan H. Yelton, director of public assistance; Dr. Roma S. Cheek, secretary of the State Commission for the Blind; Dr. Carl V. Reynolds, State health officer; and the Department of Public Instruction, particularly T. E. Browne, director of vocational education.

Old Age Assistance, help for needy residents past 65 years of age, in the three years of distribution, through last June 30, amounted to \$140,922.04 in this county.

Aid to Dependent Children, help for those deprived of their normal breadwinners, amounted to \$48,896.50 in the same period in this county.

Aid to the Blind, in the same 36 months, amounted to \$13,099.04 in the county.

In these three divisions of the Social Security Act, the Federal Government provides one-half of the funds and the State and counties one-fourth each, with a State equalizing fund to help the smaller counties. Prior to January 1, 1940, these three governmental units furnished one-third each for Aid to Dependent Children.

No county figures are available for Old Age and Survivors Insurance. Monthly payments in this division started after January 1, 1940, due to a 1939 amendment, after lump-sum payments for three years. This will, in due time, become one of the most important of the five major divisions of the Social Security Act.

With practically accurate figures, it is evident, Mr. Powell points out, that about \$416,248.00 was distributed in this county to July 1 in four of the five major divisions of the act, exclusive of Old Age and Survivors Insurance.

In the other five divisions, classed as "services," approximately \$127,685.00 has been distributed in this county, including about \$2,560.00 in Child Welfare Services and about \$4,985.00 in Vocational Rehabilitation.

Disbursement of funds in the other three "services" is made through county or district health departments, and only 76 of the 100 counties having such departments June 30, 1940, participated in this distribution. (Three other counties — Gates, Lincoln and Rockingham — started organized health work as of July 1, 1940, but did not share in the funds in the period being considered.) Twenty-four counties, therefore, received practically no funds in these divisions, and what they would have received, and didn't, increased the funds to counties with health departments.

Surry county, with a health department, received \$22,680.00 for Maternal and Child Health Services; \$19,665.00 for Services to Crippled Children; and \$77,795.00 in Public Health Work.

These five "service" division reports are approximate. The 1940 Census figures of 3,561,990 for the State and 41,748 for this county were used in prorating the funds, made up of Federal allotments, matched by the State and counties.

Surry county, central UCC office records show, has 90 resident employers subject to the Unemployment Compensation law and 5,409 workers protected by it. Liable resident employers paid \$348,367.74 into the State fund in 3½ years, ending last June 30, as compared with \$213,330.23 in benefits drawn in 2½ years, also ending June 30, by resident workers in the county.

The records show that in 30 months of payments, unemployed workers in the county filed 10,409

### TO GIVE CHRISTMAS PROGRAM DEC. 22nd

A Christmas program will be presented at Elkin Valley Baptist church on the evening of December 22, at 7:30 by members of the church school. The public is cordially invited to attend.

The church also extends an invitation to the public to attend Sunday school each Sunday morning at 9:45. George M. Walters is superintendent of the Sunday school and James B. Mitchell is assistant superintendent.

### CARTER INFANT DIES THURSDAY

Lanola Carter, infant daughter of Mr. and Mrs. Harvey L. Carter, died suddenly during the night Thursday at the home near Elkin. Funeral services were held Friday afternoon from Little Richmond Baptist church.

initial claims—the first claims filed after becoming unemployed—and 79,299 continued claims—claims filed weekly after the initial claims.

Employment Service records indicate that in the 3½ years, through June 30, 11,286 registrations for work and 2,578 placements in jobs were handled in the county.

### More Free Theatre Tickets to Be Given



The three people pictured above have two free theatre tickets each awaiting them at The Tribune. These tickets are good for admission to both the Lyric and Elk theatres. More tickets will be given away next week, so watch for next week's pictures.—(Tribune Photos.)

## ANNOUNCING The Opening of New Office for the PRACTICE OF CHIROPRACTIC

In New W. M. Allen Building, West Main Street, When  
Completed Around First of the Year  
RESIDENTIAL OFFICE NOW AT BROOKS CROSS ROADS

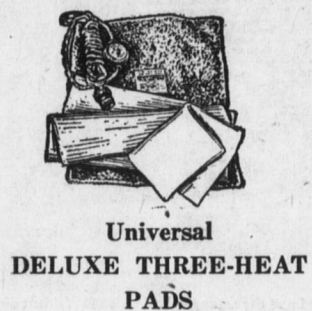
**DR. JAMES H. HOWARD**  
PRACTICING 15 YEARS

### DOINGS OF THE DRAKES By Elk Pharmacy



There's a lot to say for the service rendered by the Elk Pharmacy in compounding prescriptions, backed by long experience in accurately preparing medicines in accordance to specifications.

**ELK PHARMACY**  
ELKIN, N.C. Phone 310



Universal  
DELUXE THREE-HEAT  
PADS

Thermostats maintain either of three temperatures. Green siderdown cover. Washable muslin slip for dry heat. Water-proof cover for wet application.

\$2.95 to \$6.95



Universal  
ELECTRIC KETTLES

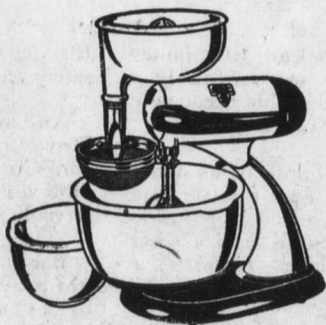
\$7.85



Universal  
WAFFLE MAKERS

Built close to table top for easier serving, yet table-top is always cool. Heat indicator. Automatic and non-automatic.

\$5.95 to \$8.95



Sunbeam  
MIXMASTER

America's Favorite Food-mixer. Eliminates tiring arm-work from cooking, baking, getting meals. Complete with juicer.

\$23.75



AUTOMATIC IRONS

\$8.95

Others from \$2.95



Universal  
TRAVEL IRON

\$3.95



Universal  
TURN-EASY TOASTER

\$2.95



Universal  
SANDWICH TOASTER

\$8.95



Sunbeam  
TOASTER  
Fully automatic. Either pops toast or keeps it warm

\$16.00

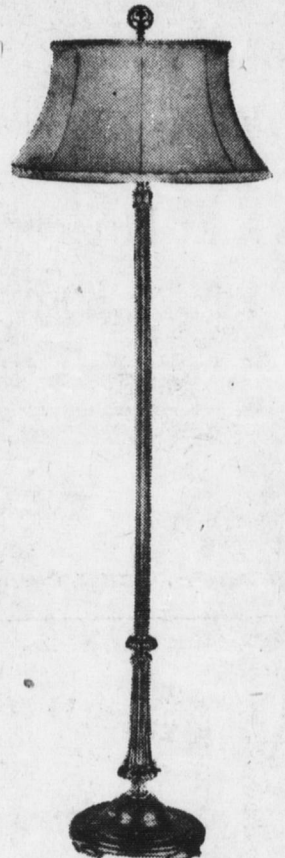


## Reddy Suggests Some of These Grand--- ELECTRICAL GIFTS

Because He Knows You'll Like Them!

Just glance around this array of desirable and most acceptable gifts of the electrical variety! We'll wager that each one suggests some favorite person to your mind. If so, don't dilly dally around looking for something else. Come right down and make the selection now... and know that you've just the gift that will hit the spot! It may be a greatly needed reading lamp... a student lamp for studying... a mixmaster for Mother... a toaster, waffle iron or electric iron for the newly married couple... a heating pad for Granny... or a percolator for your married sister. One trip to our showrooms will solve many a disturbing problem and make many a Christmas a very happy one!

*Duke*  
**POWER COMPANY**



I. E. S.  
Certified  
FLOOR  
LAMPS

Complete with silk or parchment shades.  
\$7.95 to \$9.95



I. E. S.  
STUDY LAMPS  
\$3.95



Universal Colonial  
PERCOLATOR

High Boy pattern. Makes perfect drip coffee automatically. 7-cup capacity.

\$8.95

Others from \$5.95