NEW BERN  
BANKING &  
TRUST COMPANY  
CAPITAL \$200,000.00

## PRUDENCE AND PROGRESS.

EVERY man who exercises proper prudence in the care of his money will make progress. This is just as unsilencing as the law of gravity. One of the precautions that every person should take is to have a bank account and deposit all money received so that it will be safeguarded against loss. We invite accounts subject to check or bearing interest.

4% PAID ON SAVINGS

## WE HAVE JUST RECEIVED

Another Shipment  
OF  
Ladies and MissesCoats  
AND  
Coat SuitsAll Sizes, Any Color You  
May Want. Just Look Them  
Over.

THE PRICES ARE RIGHT.

S. Coplon &amp; Son

SELLS IT FOR LESS

LITTLE OUT OF THE WAY, BUT IT PAYS TO WALK TO COPLON'S

## ATTENTION

Your attention is called to the fact that we have a very noble line of Boys Clothing. The latest designs and effects, the kind that your boy will be pleased with. We guarantee every suit to give satisfaction or money refunded. All sizes up to 18 years.

Our line of Men's Clothing, in, we consider the best and the most important is the right price.

S. LIPMAN

Cor. 18. Front Bryan Block.

OUR FAMOUS  
DOUBLE SEAT AND LINED FRONT "INDestructible"  
GUARANTEED SUITTHE COMING OF  
THANKSGIVING

is when your thoughts will turn to what you have to be thankful for. And allow us to mention right here you will be thankful if you have purchased your lumber from Broadus & Ives Lumber Co., who are thoroughly reliable and you can depend upon it that anything they sell you in the way of lumber is all right.

Broadus &amp; Ives Lumber Co.

OPEN FOR BUS-  
INESS IN 1913Committee Report President Taft  
As Right On Panama Canal  
Estimated Finish.

New York, Nov. 8.—The Congressional committee that went to the Isthmus of Panama last month, returned on the steamer Ancon yesterday satisfied that President Taft's prediction would be fulfilled and that the canal would be finished and open for business by 1913. As a result of their visit Congress probably will be urged to pass at the earliest possible moment legislation regulating the government of the canal and setting the question of tolls.

The party included Senator Brandegee, chairman of the Inter-Oceanic Canals Committee; Bristow, Cummins, Page and Overman, and Representatives Higgins, Senators Westmore and Thornton were on the isthmus with the party, but the former remained there to nurse an attack of bronchitis, while Senator Thornton returned to New Orleans by another steamer Senator Brandegee said.

"The progress of the work since my last visit two years ago is remarkable. So far as it is possible to see into the future it looks as though the canal would be finished and opened for business in 1913.

"It will be finished within the estimated cost of \$375,000,000. As the so-called slides of material into the prism, concerning which alarming reports are printed at intervals, I think little apprehension need be felt. The economic results from better organization, greater efficiency in operation, and better knowledge of methods of treating the slides have enabled the operating force to excavate the material without increasing the estimated cost of the completed canal."

Don't say "they haven't got it" till you've tried us.  
J. S. Basnight Hdw. Co.

Bake and Candy Pull.

At the Parish House next Saturday morning at 11 o'clock there will be a Bake, those wishing some choice article for Sunday's meals should be there.

At 3:30 p. m. there will be an old fashioned candy pull at the same place, with plenty of fun, an admission of 10 cents will be charged.

BURIAL OF THE  
MAINE AT SEAEnd of Wreck of Battleship. The  
Cause of Explosion Will Re-  
main Unknown.

Washington, Nov. 8th.—The stern of the wreck of the Maine will be floated out to sea and buried; the bow will be hacked to pieces and hauled out on barges and dumped in the sea. Gen. Bixby, chief of the army engineers in charge of removing the tangled wreck from Havana harbor, has decided upon this course.

The situation of the wreck is uncovered, it is in excellent condition. The bow of the ship, where the explosion occurred, is a tangled wreck of boilers and girders and will not be completely uncovered for at least 3 months, probably longer, the time depending on whether or not Congress appropriates \$250,000 for the work next month.

"In about three weeks we will start to trip the stern section free from the bow," Gen. Bixby said. "We have got enough money out of the last appropriation to sever the wreck into two portions, but we have not enough to remove the cofferdam and tow the stern out to sea.

"A great part of the bow is covered with mud and we will not know just how to handle that portion until we have removed the mud. It is a slow, tedious job, but when it is removed finally the bow will be in very small pieces. The further we get along in the work the more work we find to be done.

"All these new theories about the destruction of the ship are mere guess work. We know just as much about the cause of the wreck today as we did thirteen years ago. The original explosion was so small in comparison to the explosions that followed from the magazines that the first cause probably left no definite clue."

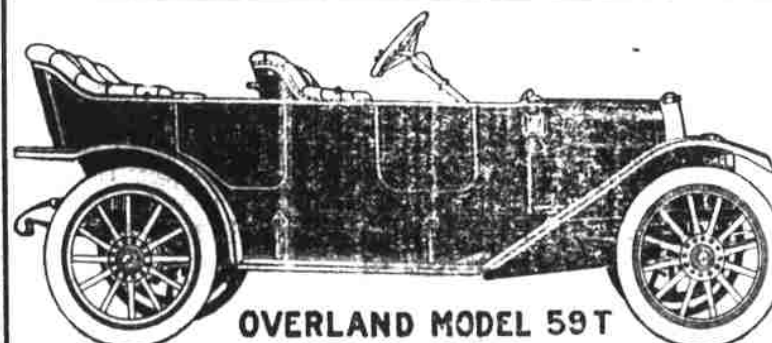
## A Good Oil Heater.

Nothing is better to heat quick with, than an Oil Stove. I have the Barler which is considered the best, price from \$3.50 to \$7.50.

J. S. MILLER.

## TO CURE A COLD IN ONE DAY

Take LAXATIVE BROMO Quinine Tablets. Druggists refund money if it fails to cure. E. W. GROVE'S signature is on each box. 25c.



OVERLAND MODEL 59T

\$900.00 :: 30 H. P.

5 PASSENGER  
Fore Door Touring Car

## SPECIFICATIONS

WHEEL BASE—106 inches.  
TREAD—60 inches.  
CRANK SHAFT—This is the only car of its class with a five-bearing crankshaft. This feature gives support on each side of each connecting rod as it delivers its power stroke, which insures the greatest possible rigidity and keeps the crankshaft in perfect line on its bearing.

MOTOR—4 inches by 4 1/2 inches. Cylinders cast separately. L-head type, large sized valves, push rods lubricated, insuring a sweet-running, silent, powerful motor.

CARBURETOR—Model L Schebler (the best Schebler makes.)  
TRANSMISSION—Selective three speeds and reverse, center control, F. & S. annular ball bearings.

STEERING GEAR—Worm and segment adjustable 16 in wheel.  
IGNITION—Dual system, Spitzdorf magnets and batteries, one set of plugs.

HORSEPOWER—30.  
BRAKES—Internal expanding, external contracting, on rear wheels.

SPRINGS—Semi-elliptic front, three-quarter elliptic rear, 1 1/2 inch wide.

FRAME—Pressed steel.  
CLUTCH—Cone.

FRONT AXLE—Drop forged I-section.

REAR AXLE—Semi-floating.

WHEELS—Artillery, wood, 12 spokes, wide hub flanges.  
SPOKES—1 1/2 inch spokes, bolt for each spoke.  
TIRES—33 inch by 3 1/2 inch.

We are daily expecting a carload of these cars, and will sell them fully equipped with Mohair Top, Glass Windshield and Prestolite Tank, delivered in New Bern for \$1,000. No greater value in Automobiles has ever been offered. It will pay you to see the "OVERLAND" before placing your order.

HYMAN SUPPLY CO.

NEW BERN, N. C.

IMPORTANT RESO-  
LUTION OFFEREDTo Board Aldermen To Widen  
Broad St., and Pave New St.  
Bids For Hose.

The board of aldermen met in regular monthly session Wednesday night, quorum present. Owing to a break in the line there was no light until 9 p. m., tho' from the rays of a small lantern the clerk read the minutes of the previous meeting.

Bids for 2,000 feet of fire hose were opened there being seven bidders. Each bidder was given ten minutes to tell of his goods. After reading bids and hearing from those who wanted to speak, the matter of awarding bid was referred to the committee, report to be made at recess meeting next Tuesday night.

Mr. Rodman Guion in behalf of Syer & Co. appeared before the board with a petition signed by wholesale merchants, asking that the license tax of the above firm be rebated, that its business transactions did not warrant that it be subject to this tax. Referred to ordinance committee to report next meeting.

Alderman Simpson read the following resolutions:

Whereas, Broad street west of Queen street has been either encroached upon by persons owning lands adjacent thereto, or said Broad street has never been laid out west of said Queen street, the truth of which is unknown; and, whereas, that part of said Broad street lying between said Queen street and End St., the western boundary of the city, is at the present time a narrow, muddy lane incapable of being drained and improved and kept in proper repair in the manner and to the extent the board of aldermen deem best for the best interest of the city; the said part of Broad St. being one of the principal thoroughfares entering the city, therefore be it

Resolved, That it is necessary that the said part of Broad street lying between said Queen street and End street be widened so that said part of Broad street shall be at least forty feet in width, and that the streets and pumps committee be and it is hereby ordered to at once proceed to widen said street as aforesaid, and if necessary, to straighten said part of Broad street, according to and in the manner provided by law. And the city attorney and city engineer shall render such assistance in said work as they shall be called upon to render by said committee.

And, whereas, since the sidewalks and many of the streets of the city have been paved, New street and adjoining lands have been frequently inundated and flooded because of the rapid shed of water from adjoining territory wherein the streets have been paved to New street which is a natural water drain; and whereas, the inhabitants of the city living along New St. have been greatly inconvenienced and suffered great damage and the health of the whole community will suffer thereby; and whereas due advertisement has been made and the contract awarded to F. J. M. Guire, the lowest bidder, for Tervia Macadam pavement; and whereas the board of aldermen deem it necessary and best for the best interest of the city to pave that part of New street lying between East Front street and George street with Tervia Macadam; now, therefore, be it

Resolved, That said F. J. McGuire be and he is hereby directed to pave New street between East Front and George streets in the same manner and under the same specifications and bond and at the same price as heretofore agreed upon for the paving of East Front and Pollock streets, and that the Mayor and City Clerk enter into written agreement with said F. J. McGuire to that effect.

Alderman Ellis made amendment that both propositions be separated and submitted to the vote of the people for adoption. On roll call the amendment carried by a vote of 7 to 5.

Regular and audited bills read and approved. Recess taken to November 14th, at night.

See our line of Coal and Wood Heaters. J. S. Basnight Hdw. Co. 67 S. Front St., Phone 99.

Mrs. J. H. Bell Passes

Yesterday afternoon at 5 o'clock at St. Leo's Hospital at Greensboro, Mrs. J. H. Bell, of Pollockville, peacefully fell on sleep.

Mrs. Bell has been in ill health for several months and her demise was not unexpected.

The remains will be carried to Wilmington and there interred this afternoon.

Mrs. Bell is survived by her husband, one son, Mr. E. E. Bell, her mother, Mrs. E. W. Ward and two sisters, Mrs. C. C. Corbin, of Harrisburg, Pa., and Mrs. E. E. Koonce of Wilmington, and a large number of relatives.

Rochester Chaffing Dishes and Percolators. M. E. Whitehurst & Co.

## 4% INTEREST ON SAVINGS 4%

## A SERVICE FOR ALL.

Whether you are a merchant, a farmer or a wage earner, you would be benefited by carrying an account with this bank subject to check. It affords safety and facilitates the handling of money. By referring to the returned vouchers you have indisputable receipts for the payment of all bills. This plan also furnishes an accurate record of every transaction, it saves you time and places your financial affairs upon a more systematic basis. Any amount will open a checking account with this bank.

THE PEOPLES BANK  
NEW BERN, N. C.  
STRONG, COURTEOUS, PROGRESSIVEIN THESE DAYS OF SHORT DRESS THE SHOE IS  
ALL IMPORTANT.That's Why "Queen Quality" or "May Manton"  
Are The Shoes to Buy.

They bring out and enhance all the beauty of your foot. They are skilfully modelled to lend a graceful poise to your body. And better still the good leather, the artful workmanship insure comfort and wear. The shoes look well and they will grow old gracefully, retaining their shape and appearance of distinction after many days.

What's your size, what's your preference in shoes? "Queen Quality" or "May Manton" will meet it. And the price—about what you want to pay.

A complete line of these popular shoes in all the season's latest styles. Velvets, Tans, Patent and all the favored leathers.

Your Winter costume is not complete until you are properly shod. "Queen Quality" or "May Manton" should be your choice.

J. J. BAXTER

ELKS TEMPLE

DEPT. STORE.

## The Smith Premier

VISIBLE TYPEWRITER

MODEL 10.

Acme of Perfection in Construction and Service.

ENNETT'S

- BOOK -

STORE

DON'T WAIT UNTIL THE LAST MINUTE  
TO GET YOUR WINTER CLOTHES.

## Get Them Now

To secure all the style, service, satisfaction and good value, to which you are entitled in your clothes, you had better come to this store, where the newest and best of everything women and girls wear can be had in qualities you like and at prices you like to pay.

## COATS THAT SATISFY

Coat Suits and Coats that satisfy is the one best phrase we can find to describe our handsome New Suits and Coats for Women and Misses, they satisfy the most critical dressers as to style, fit and service and they satisfy them at a lower cost than any other.

THE DIFFERENCE IS NOT IN THE PRICE, BUT IN  
WHAT YOU GET FOR THE PRICE.YOUR DOLLARS GO A LONG  
WAY AT THIS STORE.

J. M. MITCHELL &amp; CO.

61 FOLLOCK ST.

PHONE 288