

NEW BERN  
BANKING &  
TRUST COMPANY

CAPITAL: \$200,000.00

## EVERY BANKING FACILITY.

THE officers of this bank have made a careful study of the facilities required for the accurate and prompt transaction of business and every modern facility has been installed that can in any way serve to make banking more safe and convenient. A trial will demonstrate this to your satisfaction.

SAVINGS, CHECKING AND COMMERCIAL  
ACCOUNTS INVITED.

4% PAID ON SAVINGS

## ANOTHER SHIPMENT

OF  
Ladies and Misses

COAT SUITS

AND

REVERSABLE COATS

JUST RECEIVED

An assortment big enough for the most fastidious to make a selection. Priced as to be strikingly conspicuous, even to the most casual observer.

SUITS \$10 to \$35.

COATS 5 to 25.

WE WANT YOU TO SEE OUR STYLES AND VALUES

S. Coplon &amp; Son

SELLS IT FOR LESS

LITTLE OF THE WAY, BUT IT PAYS TO WALK TO COPLON'S

Don't Wait Until The Last Minute  
To Get Your Winter Clothes.

## Get Them Now

There are all the style, service, satisfaction and good value, to which you are entitled in your clothes, you had better come to this store, where the newest and best of everything women and girls wear can be had in quantities you like and at prices you like to pay.

## COATS THAT SATISFY

Coat Suits and Coats that satisfy is the one best phrase we can find to describe our handsome New Suits and Coats for Women and Misses, they satisfy the most critical dressers as to style, fit and service and they satisfy them at a lower cost than any other.

THE DIFFERENCE IS NOT IN THE PRICE, BUT IN  
WHAT YOU GET FOR THE PRICE.YOUR DOLLARS GO A LONG  
WAY AT THIS STORE.

J. M. MITCHELL &amp; CO.

61 POLLOCK ST.

PHONE 1234

COTTON SITUATION  
PAST WEEKContinues Dull But Firm. Regard-  
less 16,000,000 Bale Crop  
Estimated.

New York, Nov. 18.—Cotton has offered a stubborn resistance to anything of a depressing character. Time after time it has demonstrated a certain strength which has defied bears and others. It might decline, but it speedily rallied. The crop might be estimated as high as 16,000,000 bales, but farmers have refused to sell freely. Many of them have been holding back their cotton altogether. Many believe that a big crop, even 15,000,000 to 16,000,000 bales, has been simply discounted in the big decline in prices since last Summer. It is pointed out, too, that a grown crop is one thing, a commercial crop, or a crop actually sent to market is another thing. The commercial crop may be much smaller than the one actually raised. The South, it is added, has in the past shown its ability to hold back cotton and what has been may be again. The exports are large. Large spot interest have been big buyers of December and other near months. One of them in 48 hours, it is said, bought 100,000 bales of January. The revision of differences here on Wednesday is construed by some as bullish. Some half dozen well known Liverpool houses at one time bearish, are now bullish in their conviction. The National Ginners' figures up to November 13th, were 11,478,000 bales as against expectations of 150,000 to 200,000 bales more than this. Liverpool houses have been buying here.

So to some extent have American spinners. Bears have, as a rule, become more cautious. Many of them have covered and have been watching a market that somehow refused to go down. Yet there are still bears. They point to the Chinese news as portending poor trade in China, to the report that China is cancelling large orders in Lancashire where some of the mills are it is said, shutting down on that account and to the fact that at best there is no very decided improvement in trade in this country where the taking by Northern spinners at least continue to run considerable behind those of last year. They think that holding back cotton at the South will in the end prove a boomerang. The into-sight movement is large. Stocks at the ports are liberal and they are piling up at the interior towns. Here at New York the market has gotten into a sort of deadlock. Farmers will not sell freely, nor will spinners and others, as a rule, buy except cautiously. Ellisons says that mills in Lancashire are reported to be stopping owing to the war in China. Spot markets are quiet. The weather of late has been generally favorable, though it now threatens to become very cold in the western belt. The South still, as a rule, holds firmly around nine cents and the whole market has gotten to a rut. What is to extricate it remains to be seen. Prices are somewhat lower for the week, but bears have won no successes to boast of. For that matter, neither have the bulls. The East Indian crop is estimated by Ralli at 4,400,000 bales, or 500,000 bales less

NORFOLK SOUTH-  
ERN BUYS ROADSRaleigh and Southport, Durham  
and Charlotte. Speculative  
Surnames as to Ultimate  
Extensions.

Raleigh, Nov. 18.—It developed in connection with the presence of President E. T. Lamb and General Counsel W. B. Rodman, of the Norfolk Southern railroad, in Raleigh conferring with the North Carolina corporation commission, that the Norfolk Southern railroad has consummated a deal through which it purchases the Raleigh and Southport, Durham and Southern, and the Aberdeen and Ashboro, The Raleigh and Southport railroad is operating from Raleigh to Fayetteville and building from Lillington to Sanford; the Aberdeen and Ashboro railroad, or Page road, has an important line from Aberdeen, Moore county, up through Montgomery county, into Randolph to Ashboro, with trackage privileges over the Southern railway into High Point, and the Durham and Southern railroad, an important line from Durham, through Wake and Harnett counties, to Dunn, connecting with the Atlantic Coast Line railroad there.

The News and Observer states today upon authority that the Norfolk Southern Railway Company, and interests allied with that company, have purchased from Mr. John A. Mills and his associates the Raleigh and Southport Railroad and all its properties. It has also purchased from Mr. Lenning and his associates the railroad known as the Durham and Charlotte road, which is now and has been for years in operation from Cummock to Troy. The Norfolk Southern will construct this road from Raleigh to Concord, either under its own charter or under the charter of the Raleigh, Charlotte and Southern Railroad obtained from the last Legislature by leading citizens between Raleigh and Charlotte and purchased some weeks ago by Mr. E. C. Duncan, acting for himself and his associates, his associates now turning out to be the Norfolk Southern Railway Company.

## TWO OF DEALS DENIED.

Troy, Nov. 18.—It is reported here tonight on good authority that all holdings of the Asheville and Aberdeen Railroad Co. have been sold to the Seaboard Air Line. The deal was consummated at Biscoe today. The Asheville and Aberdeen owns the line from Aberdeen to Asheville, from Pinehurst to Carthage, from Candor to Elberta and from Biscoe to Mount Gilead.

Durham, Nov. 18.—Vice President J. E. Stagg of the Durham and Southern Railway said tonight, in answer to a query as to that road being included in the deal whereby the Norfolk Southern absorbs several roads:

"I know nothing of other roads, of course but as for the Durham and Southern, you may say it is not included in the deal. I haven't heard a word about any such deal and know it doesn't exist so far as ours is concerned."

than last year. The weekly statistics were bullish but fell flat in a very dull market.

SUFFRAGETTES  
MEET PREMIERConsidered a Victory. Women  
Want Property Qualifica-  
tion Plan of Voting.

London, Nov. 17.—Led by Miss Christabel Pankhurst, a big delegation of suffragettes in conference with Premier Asquith, Chancellor of the Exchequer Lloyd George, Foreign Secretary Sir Edward Grey and First Lord of Admiralty Churchill concerning the inclusion of votes for women in the manhood suffrage bill the administration will shortly introduce in Parliament.

It is significant of the suffragettes increasing influence in English politics that Premier Asquith, who has hitherto steadfastly refused to receive such deputations, made a definite appointment with the present one for a conference at his official residence and asking the leading members of his ministry to be present at the conference.

The suffrage bill the administration contemplates provides for the abolition of the existing British system of plural voting by large property owners and the establishment of just such a one-man-one-vote system as prevails in the United States.

The women had already been offered the ballot on a property qualification and were willing to accept the proposition as an "entering wedge," as their leaders expressed it.

Many Liberals, with Lloyd George at their head, refused to sanction the plan, however, on the ground that it would increase the conservative vote. Lloyd George at any rate favors equal suffrage, but without the property qualification. An attempt is now being made to reach a compromise between the conflicting factions.

A strong cordon of police surrounds the Premier's residence as a precaution against a suffragette demonstration while the conference is in progress.

Ninety minutes of amusement  
at The Athens at small cost.

Ton of Fertilizer Free.

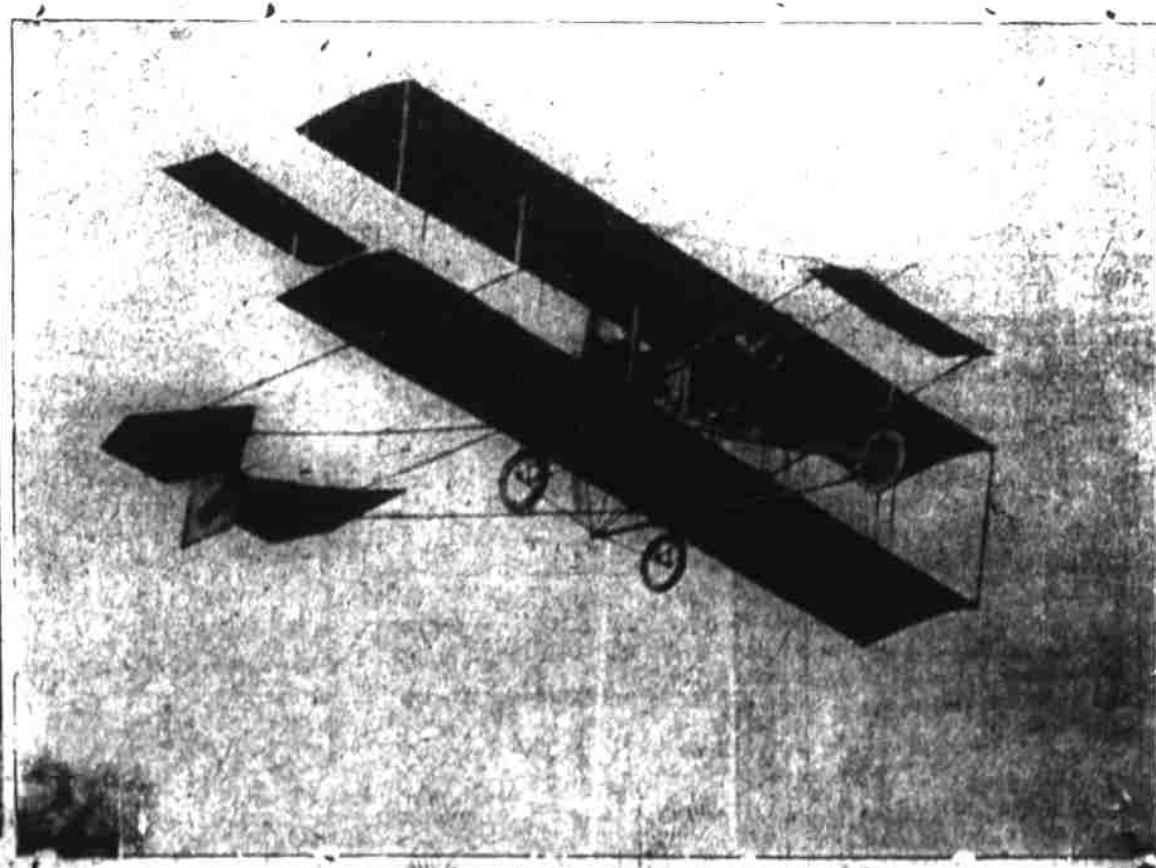
The Norfolk branch of the Virginia-Carolina Chemical Co. will have an exhibit at the Agricultural and Stock hall this week, and invites the public to call and see its exhibit. Cards will be given away bearing numbers, and some one card will be good for a \$25.00 ton of V. C. C. Co. fertilizer. See the ad in this issue.

Remember, Veterans.

By kindly consideration of J. Leon Williams Secretary, to the members of Camp New Bern No. 1,162 United Confederate Veterans a complimentary ticket will be furnished each member of the Camp to attend the Aviation meet on 22 of Nov. 1941. Tickets can be procured from S. R. Street, Lieut. Commander, or J. F. Clarke, Adj.

Perfection Oil Heaters—The  
Only Perfect Heater. M. E.  
Whitehurst & Co.

## Meet Your Friends at New Bern This Week



## MAKING A FLIGHT.

The tickets that have been delivered at the entrance gate. The admission to the Aviation Field will be fifty cents, twenty-five cents for children under twelve. Some of the features of the Aviation Field will be the flights by the Curtiss Aeroplane, football game New Bern vs. Washington, racing on half mile track, dive by Harry Six from the top of a ladder 100 feet high into a pool of water three feet deep, Ferris wheel, merry-go-round, six first class shows, and music by Howard Machinery and John's Boys.

Italian Bands. No admission will be charged to the Exhibit Hall on George street where the Agricultural, Stock, Poultry, and Industrial exhibits will be on display. The Exhibit Hall is now being handsomely decorated.

Reports from surrounding counties indicate that New Bern will have the largest crowd November 22nd, and 23rd that has ever gathered for an exhibit of this kind. The railroads are offering reduced rates.

## 4% INTEREST ON SAVINGS 4%

DO NOT  
TAKE THE RISK

of leaving your important papers, such as mortgages, bonds or valuables such as jewelry, watches and other articles of worth where they will be lost by fire or theft. A Safe Deposit Box in our bank is a burglar proof vault will provide just the protection you need and can be rented for the nominal charge of \$1.00 a year. Storage for bulky packages is furnished for extra charge.

THE PEOPLES BANK  
NEW BERN, N. C.  
STRONG, COURTEOUS, PROGRESSIVEIN THESE DAYS OF SHORT DRESS THE SHOE IS  
ALL IMPORTANT.That's Why "Queen Quality" or "May Manton"  
Are The Shoes to Buy.

They bring out and enhance all the beauty of your feet. They are skilfully modeled to lend a graceful pose to your body. And with the good leather, the artful workmanship insure comfort and safety. Your shoes look well and they will grow old gracefully. Remember, the quality and appearance of distinction after many days.

What's your size, what's your preference in shoe? "Queen Quality" or "May Manton" will meet it. And the price, about \$1.00, is what you want to pay.

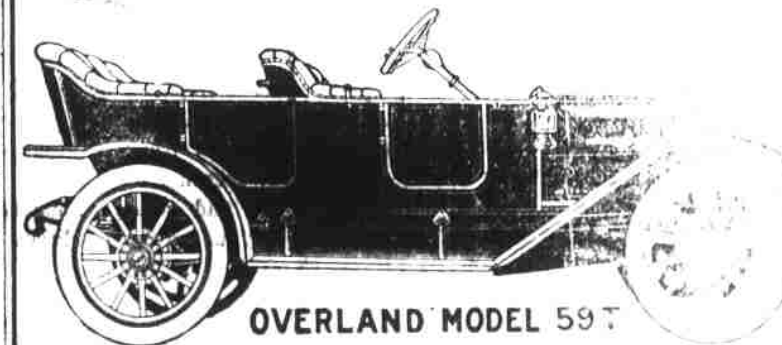
A complete line of these popular shoes in all the latest and latest styles. Velvets, Tans, Patent and all the latest leathers.

Your Winter costume is not complete until you are provided with "Queen Quality" or "May Manton" should be your choice.

J. J. BAXTER

ELKS TEMPLE

DEPT. STORE.



OVERLAND MODEL 59T

\$900.00 : 30 H. P.

5 PASSENGER

Fore Door Touring Car

## SPECIFICATIONS

WHEEL BASE 100 inches.  
TREAD 60 inches.  
CRANK SHAFT This is the only car of its class with a bearing crank shaft. This feature gives support on each side of each connecting rod as it delivers its power stroke, which means the greatest possible rigidity and keeps the crank shaft in perfect line on its bearing.  
MOTOR 4 inches by 4 1/2 inches. Cylinders cast separately. L-head type, large sized valves, push rods lubricated, insuring a sweet running, silent, powerful motor.  
CARBURETOR Model L Schebler (the best Schebler makes).  
TRANSMISSION Selective three speeds and reverse, center control, F. & S. annular ball bearings.  
STEERING Standard 30 inch steering wheel with 100 inch wheel.  
IGNITION Dual coil, 12 volt, self-inducting, 30 inch act of plugs.  
HORSEPOWER 30.  
BRAKES 12 inch drum brakes, external on the rear wheels.  
SPRINGS 30 inch, three-quarter inch wide.  
FRAME 30 inch, 100 inch section.  
CLUTCH 30 inch.  
FRONT AXLE 100 inch, 100 inch section.  
REAR AXLE 100 inch, 100 inch section.  
WHEELS 30 inch, 100 inch, 100 inch, wide hub flanges.  
SPOKES 14 inch spokes, 100 inch each spoke.  
TIRES 32 inch by 34 inch.

We are daily expecting a carload of these cars, and will sell them fully equipped with Mohair Top, Glass Windshield and Prestolite Tank, delivered in New Bern for \$1,000. No greater value in Automobiles has ever been offered. It will pay you to see the "OVERLAND" before placing your order.

HYMAN SUPPLY CO.

NEW BERN, N. C.