

## Don't Look Old Before Your Time

That backache, so common among women, begins with the sunken chest, the headache, tired muscles, crows' feet, and soon the youthful body is no more youthful in appearance—and all because of lack of attention.

There is no reason why you should be so unfortunate, when you have at your disposal a remedy such as Dr. Pierce's Favorite Prescription—recommended for over 40 years as a remedy for ailments peculiar to women. We have thousands upon thousands of testimonials on file—testimonials of women testifying to its effectiveness. Neither narcotics nor alcohol are to be found in this famous prescription. Regularizes irregularities. Corrects displacements. Overcomes painful periods. Tones up nerves. Brings about perfect health. Sold by dealers in medicines, in liquid or tablet form.

Dr. Pierce's Medical Adviser, newly revised up-to-date edition, answers hosts of delicate questions about which every woman, single or married ought to know.

## Dr. Pierce's Favorite Prescription

## MESSAGE SENT BY MOUNTAIN

invaluable Lessons There for Those Who Love Nature and Will Calmly Listen.

It is not your highest mountain, always, that is the fittest palace of a god; or that has most mountain sweetness or mountain dignity. One could mention some that have but a thousand feet of stature, physically speaking; and yet, it would be an insult to call them mere hills. There is no savage impatience with them; their breasts are dearer than a mother's. Time was when they towered above the clouds, and were proud Himalayas for immensity; when they were all soaring unapproachable crags; repellent; concerned only with the heavens. But men and mountains drew together, and subtle ties of sympathy were formed. Ages upon ages passed over the peaks, smoothed the jagged rocks, rounded and calmed the brows, filled the chasms, and mantled all with ferns and grasses.

The mighty mother set heather to bloom there, for symbol of the soaring, purple dreams that are within; she strewed them with the gold of her gorse, to say that the immortal Wisdom, though the stems of it be thorny and your fingers shall bleed before you pick them, has for bloom a yellow and most sunbright gladness. Purple dreamings of unsatisfied aspiration; golden delight of arcane, ever living truth; green wizardry of the ferns and rushes—it is these things that ray out from the mountains I love and extol. Yes, there are mines there; but they do not penetrate the mountains, except in the merest material sense. It is the gorse and the heather and the bracken, the foxglove and the bluebell, the musc and the murmur of hidden waters, that proclaim the inward being of the mountains. It is the lone, august, and tender thought, the peace that seeps into the mind there; the compassion that fills the world when night, a blue flower, unfolds her splendor eastward, and the roses and daffodils of the sunset wane in the west—by these one may know the god in the mountain, and not despair for the world. Or when the lark rises from the heather in the morning, it is a word of the mountain message that he is concerned to proclaim.—From the Theosophical Path.

### As to Biographies.

The announcement comes from London that a biography of Mr. Lloyd George in four volumes is to be published this autumn. It is the latest manifestation of a curious modern tendency to give to the world biographies of people while they are still alive. A biography used to be regarded as the crown, posthumously awarded as the crown, posthumously awarded to a great man gone past recall, and a record of his deeds for the benefit of succeeding generations. An old man, at the close of a long and interesting life, might beguile the leisurely autumn of his days by looking his memoirs, and nothing is more fascinating reading than such an autobiography well done. But the modern world is too impatient to wait. It is too impatient even to wait till it is quite certain that a man in the popu-

## Pains All Over!

"You are welcome," says Mrs. Nora Guffey, of Broken Arrow, Okla., "to use my letter in any way you want, if it will induce some suffering woman to try Cardui. I had pains all over, and suffered with an abscess. Three physicians failed to relieve me. Since taking Cardui, I am in better health than ever before, and that means much to me, because I suffered many years with womanly troubles, of different kinds. What other treatments I tried, helped me for a few days only."

## TAKE CARDUI The Woman's Tonic

Don't wait, until you are taken down sick, before taking care of yourself. The small aches and pains, and other symptoms of womanly weakness and disease, always mean worse to follow, unless given quick treatment.

You would always keep Cardui handy, if you knew what quick and permanent relief it gives, where weakness and disease of the womanly system makes life seem hard to bear. Cardui has helped over a million women. Try it.

Write to: Ladies' Advisory Dept., Chattanooga, Medicine Co., Chattanooga, Tenn., for Special Instructions, and 64-page book, "Home Treatment for Women," sent free. J.S.I.

## Hotel Raymond

42 East 25th Street  
(At Subway Station)  
New York City  
EUROPEAN PLAN  
\$1.50 Per Day and Up  
AMERICAN PLAN  
\$2.50 Per Day and Up  
Apartments accommodations 3 or more persons from \$4.00 to \$5.00 per day.

Special rates by the week or month. Inspection invited. Reference exchanged. A quiet family hotel, recommended to ladies visiting New York City alone. Upon request by letter or Telephone 2565 Madison Square, a messenger will meet you at station.  
MARK A. CALDWELL.

### SOUTHERN RAILWAY

Direct Line to All Points North, South, East and West—Very Low Round Trip Rates to All Principal Resorts.

Through Pullman to Atlanta leaves Raleigh 4:05 p. m. arrives Atlanta 6:35 p. m., making close connection for and arriving Montgomery following day after leaving Raleigh at 11 a. m.; Mobile 4:12 p. m.; New Orleans 5:30 p. m.; Birmingham 12:15 noon; Memphis 8:05 p. m.; Kansas City 11:20 a. m. second day, and connecting for all their points. This car also makes close connection at Salisbury for St. Louis and other western points.

Through Pullman to Washington leaves Raleigh 6:50 a. m.; arrives Washington 8:53 a. m., Baltimore 10:02 a. m.; Philadelphia 12:23 noon; New York 2:31 p. m. This car makes close connection at Washington for Pittsburgh, Chicago and all points north and west, and at Greensboro for through tourist sleeper for California points and for all Florida points.

Through parlor car for Asheville leaves Goldsboro at 6:45 a. m.; Raleigh 8:35 a. m.; arrives Asheville at 7:40 p. m., making close connection with the Carolina Special and arriving Cincinnati 10 a. m. following day after leaving Raleigh, with close connection for all points north and northwest.

Pullman for Winston-Salem leaves Raleigh 2:30 a. m.; arriving Greensboro 6:30 a. m., making close connection at Greensboro for all points north, south, east and west. This car is handled on train No. 211 leaving Goldsboro at 10:45 p. m.

H. F. GARY, G. P. A.,  
Washington, D. C.  
J. D. JONES, T. P. A.,  
Raleigh, N. C.

### MORTGAGE SALE OF LAND.

As empowered by a mortgage executed by Asa Ipock and wife to Geo. T. Winfield which is recorded in the office of the Register of Deeds of Craven County, N. C., in Book No. 182 on page 139, to which refer. The said mortgage pursuant to the power contained in said mortgage will sell the land described therein at public outcry to the highest bidder at the Court House in said County, for cash on the 30th day of November at 12 o'clock m. Said land is all the land which was conveyed by Luther W. Thomas and Lorena his wife to Asa Ipock, by deed which is recorded in said records in Book 166 on page 59.

Said land is situated in No. 2 Township, Craven County, and adjoins the land of Dr. F. Duffie the Levi B. Ipock land, and is on Fork Swamp being the same on which the said mortgage is made.

This Oct. 28th 1912.  
GEO. T. WINFIELD,  
Mortgagee.

IF ARE YOU GOING NORTH  
Travel Via  
THE CHESAPEAKE LINE  
DAILY SERVICE INCLUDING SUNDAY.

The new Steamers just placed in service the "City of Norfolk" and "City of BALTIMORE" are the most elegant and up-to-date Steamers between Norfolk and Baltimore.

Equipped with wireless, telephone in each room. Delicious meals on board. Everything for comfort and convenience.

Steamers leave:  
Norfolk (Jackson St.) 6:15 p. m.  
Old Point Comfort 7:15 p. m.  
Baltimore 7:00 a. m.

Connecting at Baltimore for all points North, Northeast and West.

Reservations made and any information courteously furnished by

W. H. PARNELL, T. P. A.  
Monticello Hotel Norfolk, Va.  
QUICKEST AND BEST LINE

## Bradham Drug Co.

Sell everything with a SATISFACTION string attached. If what you purchase is not entirely satisfactory bring it back and get what you want or your money back. Our object is to satisfy every customer and we will do it.

Bradham Drug Co.

## Breakfast In a Good, Warm Room



### PERFECTION SMOKELESS OIL HEATER

A "warm" breakfast—the kind that sends you out ready braced for a good day's work—should be eaten in a warm room.

You lose half the good of the meal if you are shivering in discomfort while you eat it.

A Perfection Smokeless Oil Heater makes breakfast a cosy meal for the whole family.

No smoke or smell with a Perfection. Easily cleaned. Easily moved from room to room. An ornament anywhere; a luxury in the bedroom; a necessity in the sewing-room or the bathroom.

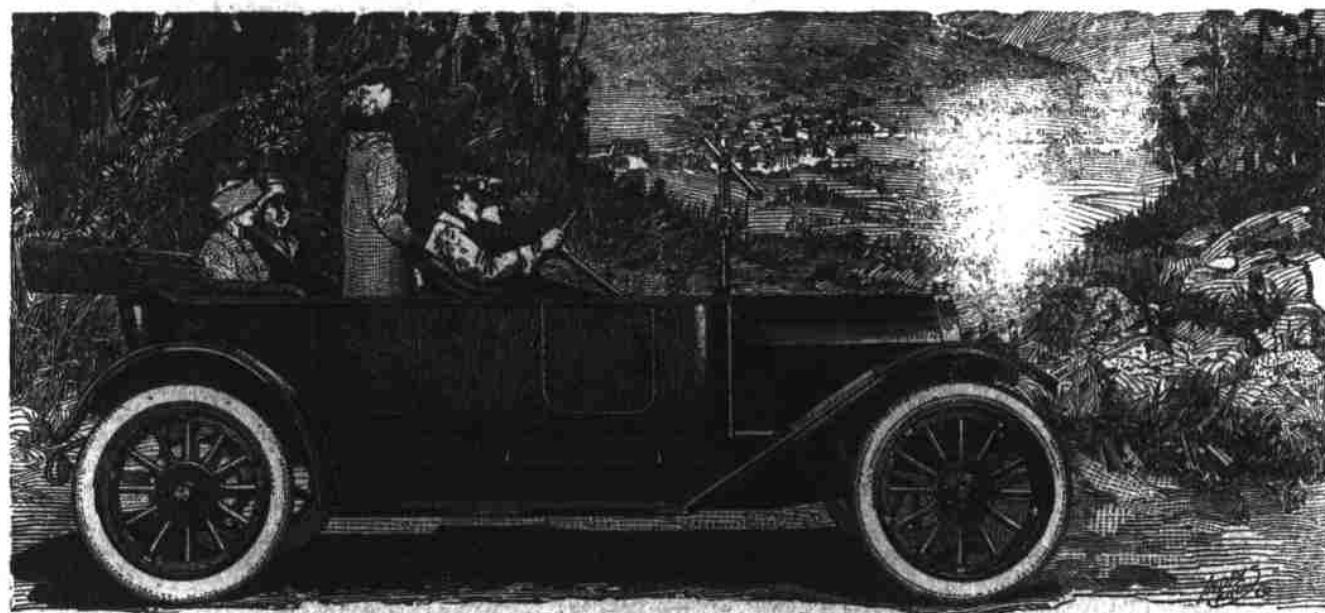
Dealers everywhere; or write for descriptive circular.

### STANDARD OIL COMPANY

(Incorporated in New Jersey)

Newark, N. J. Baltimore, Md.

## Five Passenger Great Western "Forty" Touring Car



\$1585.00 Fully Equipped, F. O. B. New Bern.

## CONSIDER THESE FACTS The 1913 Great Western "Forty" Has

4 1-4x5 1-2-inch enclosed valve silent motor with cone clutch. Famous five bearing crank shaft construction. Unit power plant. Roller valve lifters. Selective type transmission with double row New Departure bearings. Full floating rear axle. Solar electric lights, 11-inch headlights, flush dash lamps.

Prest-O self starter. Silky mohair top with one-piece side curtains. Fairfield rubber dust hood. Ventilating rain vision plate glass wind shield. Large Stewart and Clark speedometer. 36x4-inch tires on demountable rims. 118-inch wheel base—car can be turned in a narrow street. Extra rim and tire irons.

Robe and foot rails. Tool box, tools, jack, pump and tire repair kit. Black and nickel finish. 2600 pounds weight. Gasoline tank gauge. Cellular front radiator. Beautiful straight line body with invisible hinges. Black walnut trimmings. Hand buffed leather and curled hair upholstery. Eighteen processes of body finish.

Call, write or phone for COUNTY AGENCY, Demonstration or catalog.

## W. M. EUBANK,

State Agent,

Maysville, N. C.