

### Cardui, of Five Years Relieved by Cardui.

My friends began asking me why I looked so well, and I told them about Cardui. Several are now taking it.

Do you, lady reader, suffer from any of the ailments due to womanly trouble, such as headache, backache, sideache, sleeplessness, and that everlastingly tired feeling?

If so, let us urge you to give Cardui a trial. We feel confident it will help you, just as it has a million other women in the past half century.

Begin taking Cardui to-day. You won't regret it. All druggists.

Write to: Chattanooga Medicine Co., Ladies' Advisory Dept., Chattanooga, Tenn., for Special Instructions on your case and 64-page book, "Home Treatment for Women," in plain wrapper. N.C. 124

To Cure a Cold in One Day  
Take LAXATIVE BROMO Quinine. It stops the Cough and Headache and works off the Cold. Druggists refund money if it fails to cure. W. GROVE'S signature on each box. 2c.

When you yawn a good deal in the day time, and feel dull, lazy and discouraged, you have every symptom of a torpid liver.

Simmons Red Z Liver Regulator (The Powder Form) is a fine tonic for a disordered liver. It acts promptly. The bilious impurities which have interfered with the free action of the liver are driven out, the stomach is cleansed and strengthened so that it can more thoroughly digest food. The bowels are purified and a regular habit re-established. It is a splendid medicine for the whole system, Promotes a feeling of energy, mental activity and cheerful spirits.

Sold by Dealers. Price, large package, \$1.00

Ask for the genuine with the Red Z on the label. If you cannot get it, write to us, we will send by mail postpaid. Simmons Liver Regulator is a fine tonic for the liver. Look for the Red Z label.

I. H. ZELIN & CO., Props., St. Louis, Mo.

Plenty of bricks are evidently to be thrown at the Glass House currency bill.

### WHEN YOU YAWN A GOOD DEAL

Always prepares for the approaching dangers. Be wise and have one of the latest inventions out applied to your umbrella. It will protect you in time of electric storms that have been predicted for the months of June and July and August. The Hard rubber insulator. I have them at 25 cents. I will put them on your umbrella free. Special attention to all repairs. If the top is worn out I will replace it with any kind of top in the umbrella line. Price right and the work guaranteed. Drop me a card when you need my services. Yours truly L. Reynolds M. F. G. 23 Rountree street, New Bern, N. C.

Plenty of bricks are evidently to be thrown at the Glass House currency bill.



Always prepares for the approaching dangers. Be wise and have one of the latest inventions out applied to your umbrella. It will protect you in time of electric storms that have been predicted for the months of June and July and August. The Hard rubber insulator. I have them at 25 cents. I will put them on your umbrella free. Special attention to all repairs. If the top is worn out I will replace it with any kind of top in the umbrella line. Price right and the work guaranteed. Drop me a card when you need my services. Yours truly L. Reynolds M. F. G. 23 Rountree street, New Bern, N. C.

## Try Us!

The Best of Everything

Prompt and Efficient Service

Prices that actually mean a saving to you are yours to command

**H. C. ARMSTRONG**  
PHONE 174

### NOTICE.

The gas boat "H.L.N." leaves foot of Pollock street for Glenburnie Park every Sunday at 1 p.m. and maintains an hourly schedule.

Fare ten cents each way.

Special care taken of children.

For white people only.

W. H. PARRIS, Captain.

### I HAVED MOVED MY HORSE SHOEING SHOP

From Baptist Church Alley to 93 South Front street in the building with Pat Trenwith, where I have larger quarters and better facilities to do your work. If in need of first-class work give us a trial.

JOHN I. SMITH.  
93 S. Front street. Horse shoeing.

### SOUTHERN RAILWAY

Premier Carrier of the South  
N. B.—The following schedule figures are published as information and are not guaranteed.

TRAIN No. 21—Leaves Goldsboro 6:45 a. m. for Raleigh, Durham, Greensboro, Asheville and Waynesville. Through train to Asheville, handles chair car to Waynesville. Makes connections at Greensboro for all points North and East, and at Asheville with Carolina Special for Cincinnati, Chicago and all western points.

TRAIN No. 139—Leaves Goldsboro 10:55 a. m. for Raleigh, Durham and Greensboro. Handles through Pullman Sleeping Car from Raleigh to Atlanta, arrives Atlanta 5:25 a. m., making connection for New Orleans, Texas, California and all Western points also connect at Greensboro with through train for all Western and Eastern points.

TRAIN No. 131—Leaves Goldsboro 5:05 p. m. for Raleigh, Durham and Greensboro. Makes direct connection at Greensboro with solid Pullman Sleeping Car, train for Washington, Baltimore, Philadelphia, New York and all Eastern and Northern points. Connects also at Greensboro with through Tourist Sleeping Car for Los Angeles and San Francisco.

TRAIN No. 111—Leaves Goldsboro 10:45 p. m. for Raleigh, Durham and Greensboro. Handles Pullman Sleeping Car Raleigh to Winston-Salem. Makes connection at Greensboro with through train for Atlanta and New Orleans, also makes connection for Asheville, Chattanooga, St. Louis, Memphis, Birmingham and all Western points.

For detailed information, also for information concerning special round trip rates account various special occasions, Pullman sleeping car reservations, ask any Southern Railway Agent or communicate with the undersigned.

J. O. JONES,  
Traveling Passenger Agent,  
Raleigh, N. C.

### Railroad ROUTE OF THE "Night Express"

Schedule in effect June 8th, 1913.

N. B. The following schedule figures are published as information only and are not guaranteed.

### TRAINS LEAVE NEW BERN.

North and West Bound.

12:40 A. M. Daily Night Express Pullman Sleeper for Norfolk.

9:10 A. M. Daily for Norfolk—connects for all points North and West. Pullman Parlor Car and Broiler service. Effective May 2nd.

1:25 P. M. Daily except Sunday for Washington, Greenville, Wilson, Raleigh. Parlor Car Service.

4:10 A. M. Daily Night Express for Goldsboro.

9:05 A. M. Daily for Goldsboro, 6:55 P. M. Daily for Goldsboro. Effective June 14th

Winston Salem sleeper inaugurated.

East Bound.

9:05 A. M. Daily for Beaufort. Pullman service effective June 14th.

5:20 P. M. Daily for Beaufort.

9:30 A. M. Daily except Sunday for Oriental.

5:25 P. M. Daily except Sunday for Oriental.

7:00 P. m. Sunday only for Oriental.

For further information or reservations apply to T. H. Bennett, Union Ticket Agent, Phone 737.

W. W. CROXTON, G. P. A.  
W. A. WITT, Gen. Supt.

### SPECIAL SUNDAY TRAINS TO THE SEASHORE via NORFOLK SOUTHERN RAILROAD

Beaufort and Morehead City, N. C. Ready for Summer Visitors.

Beginning Sunday, June 8th, special Sunday trains will be run from Washington via Vanceboro and New Bern to Morehead City and Beaufort, every Sunday.

### Sunday Schedule

Lv Washington	7:10 am
" Chocowinity	7:22 "
" Frederick	7:27 "
" Bragaw	7:40 "
" Vanceboro	7:56 "
" Ernul	8:09 "
" Askin	8:14 "
" Bridgeton	8:23 "
" New Bern	8:50 "
" Riverdale	9:19 "
" Croatan	9:24 "
" Havelock	9:38 "
" Newport	9:55 "
Ar Morehead City	10:17 "
" Atlantic Hotel	10:20 "
" Beaufort	10:35 "

Returning Special Train will leave Beaufort 6:00 p.m., Atlantic Hotel 6:15 p.m., Morehead City Station 6:20 p.m. Arrive New Bern 7:45 p.m., arrive Washington 9:20 p.m.

Very cheap Sunday Excursion and Week End fares. Apply to any Ticket Agent for particulars.

W. W. CROXTON,  
General Passenger Agent

### A FEW POINTS IN FAVOR OF THE PITTSBURG VISIBLE TYPEWRITER.

There is not the least doubt but that THE PITTSBURG VISIBLE TYPEWRITER is the best low priced machine on the market today. It is durable, attractive and light. Its simplicity is marvelous. There are no complicated parts to get out of order. It is like an open book. If something clogs, you have only to make a few turns with a screw driver, remove the part causing the trouble, clean it off, replace and go ahead. It is the only machine in the world on which the set of type and type bars can be taken apart from the machine in less than ten seconds. This feature alone is worth many dollars as a time saver. It is the only machine now on the market with which twenty legible typewritten copies can be made at one writing. The ribbon control is automatic, the color change is simple and convenient, the back spacer and tabulating key are within an inch of the operator's hands when using the machine. The type are lined in a symmetrical row in front of the operator and are easily cleaned. Strong piano steel wire control the type bars and it is impossible for these to break. The machine is so constructed that the lightest touch or the vigorous pound used in heavy massfolding have the same effect on the mechanism.

Call at the office of the E. J. Land Printing Company and take a look at this wonderful machine. Price \$65.00 on the easy payment plan.

If you have rooms for rent or have lost or found an article, or want to buy or sell something, use the Journal want ad column on page three.

### Remember to be sure to get an estimate from

**Elijah Taylor Co.**  
General Contractors  
PHONE No. 1

Before you award that contract elsewhere.

### DOVER AND SOUTHBOUND RAILROAD.

Traffic Department.

### SCHEDULE OF TRAINS CARRYING PASSENGERS.

Effective Sunday March 30, 1913

South Bound		North Bound	
Trains	5	6	8
STATIONS			
P. M.	P. M.	A. M.	A. M.
P. M.	P. M.	A. M.	A. M.
Lv.	Ar.	Lv.	Ar.
4:25	4:25	Dover	7:55
4:40	4:42	Foys	7:38
4:44	4:46	Taylor's	7:34
4:53	4:57	Phillips	7:23
5:02	5:08	Wimsatt	7:12
5:22	5:29	Comfort	6:51
5:40	5:50	Petersburg	6:30
5:45	5:55	Richlands	6:25
	Ar.	Lv.	

Trains Run Daily except Sunday.  
Trains Run Sunday Only.

N. S. RICHARDSON,  
Traffic Manager.

D. W. RICHARDSON,  
General Manager.

### SUNDAY AND WEEK END EXCURSION RATES, NEW BERN TO WILMINGTON.

Via Atlantic Coast Line Railroad Co.

\$1.25 Tickets sold each Sunday, limited to date of sale.

\$2.85 Tickets sold each Saturday and for forenoon trains Sunday, limited to reach New Bern returning prior to midnight Tuesday following date of sale.

### ATLANTIC COAST LINE RAILROAD.

"The Standard Railroad of the South"  
T. H. BENNETT,  
Ticket Agent.

F. C. WHITE,  
General Passenger Agent,  
Wilmington, N. C.

### WEEK END AND SUNDAY EXCURSION FARES TO MOREHEAD CITY and BEAUFORT.

via NORFOLK SOUTHERN RAILROAD

From	Week End	Sunday
Kinston	\$1.75	\$1.25
Dover	1.65	1.25
New Bern	1.50	1.00
Oriental	1.75	1.25
Bayboro	1.50	1.25
Farmville	3.00	1.75
Greenville	2.75	1.75
Mackeys	3.25	2.25
Plymouth	3.00	2.00
Washington	2.25	1.25
Vanceboro	1.50	1.25

Fares to Beaufort 20 cents higher than to Morehead City.

Rates from intermediate stations in same proportion.

Week End tickets sold Friday, Saturday and Sunday morning trains good to return until midnight Tuesday.

Sunday tickets sold each Sunday until September 14th, limited to date of sale only.

"Atlantic Hotel under new management Best fishing on Atlantic Coast"

Get complete information from any ticket agent.

W. W. CROXTON, G. P. A.,  
Norfolk, Va.

### WEEK END AND SUNDAY EXCURSION FARES TO VIRGINIA BEACH AND NORFOLK.

via NORFOLK SOUTHERN RAILROAD

From	Week End	Sunday
Goldsboro	\$1.75	\$2.50
La Grange	4.75	2.50
Kinston	4.75	2.50
Dover	4.75	2.50
New Bern	4.75	2.50
Vanceboro	4.75	2.50

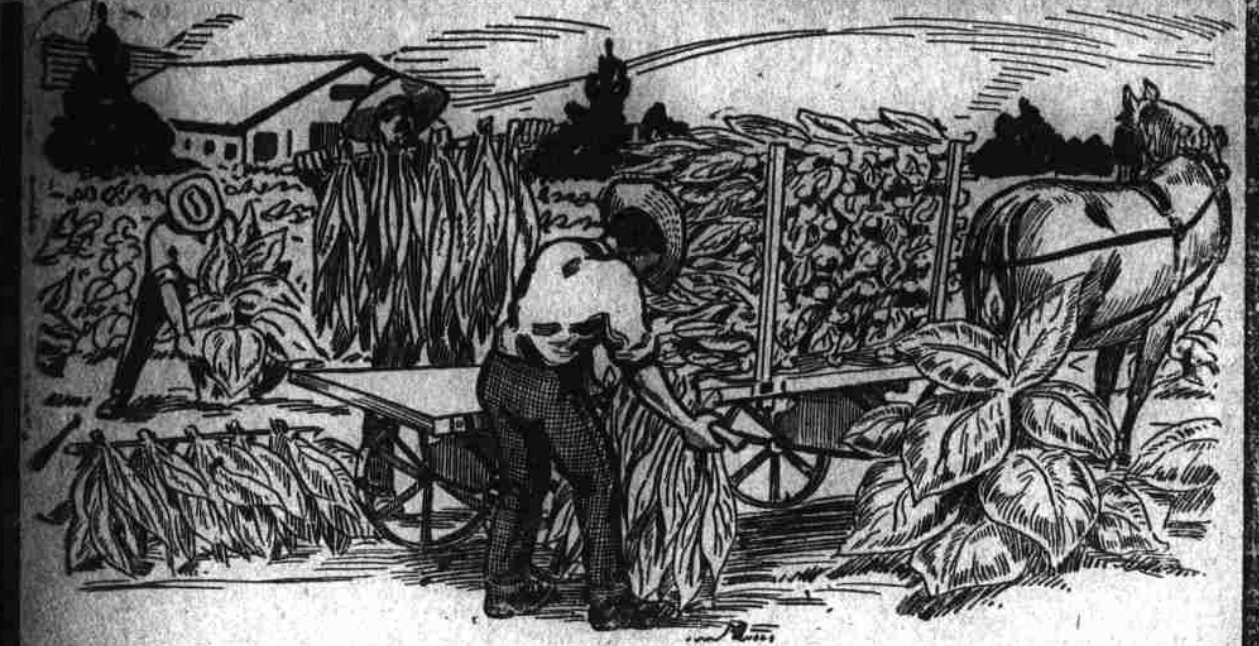
Rates to Virginia Beach—Week End 75 cents higher and Sunday 40 cents higher than the above Norfolk fares.

Week End tickets sold every Friday and Saturday, May 30th to September 7th inclusive, good to return until midnight Tuesday following date of sale.

Sunday tickets sold Saturday night trains—May 30th to September 7th good to return leaving Norfolk 9:00 p.m. Sunday.

Get complete information from your Ticket Agent.

W. W. CROXTON G



The most useful, economical, and the largest labor saver you can put in your field, is our tobacco, corn and cotton truck. Order now and be in time, large force working daily turning them out. Get our folder explaining.

**THE TAYLOR TRUCK COMPANY,**  
Factory 129 East Front Street,  
New Bern, N. C.

# Subscribe for the THE Daily Journal

One year	\$4.00
Six months	2.00
Three months	1.00
One month	.40
One week	.10

**PHONE 8**

The Weekly Rates will be collected by the carriers.