

**THE POLK COUNTY NEWS.**

OFFICIAL JOURNAL OF POLK COUNTY.

W. C. COCHRAN, } Editors and -  
JOHN CARLISLE, } Publishers.

One year.....\$1.00  
Six months......50  
Three months......25

PHONE No. 2.

THURSDAY, DECEMBER, 3, 1903.

**A LETTER FROM H. E. GRAY.**

A letter received recently from H. E. Gray, who left here about the first of last August for Olympia, Wash., seems to indicate that Mr. Gray and family are well pleased with their new home. Speaking of Olympia Mr. Gray says in part:

"I have been too busy to make careful investigation but judging by the vegetables, etc. which we see here I think this would be a splendid place for truck farming. We often see a potato weighting three pounds, or a turnip about the size of a gallon measure and other things in proportion. Vegetables grow here all winter and are plentiful, I am told, at all times of the year. Fruit here is entirely beyond my ability to describe, not alone in quantity and size, but in quality and beauty also. I counted twenty seven large and beautiful apples on one twig all touching each other like grapes on a bunch. We still have ripe grapes and roasting ears, radishes and other vegetables. There seems to be employment for all and the lowest wages so far as I know \$2.00 per day. The weather here has been most beautiful, but has been rainy for the past few days. I think the rainy season here is about like last winter was in Polk and the people say it is the most healthful time of the year. I do not think any one can make a mistake in coming here, in fact, I think it is a mistake not to come. With best wishes, I am,  
Yours truly,  
H. E. GRAY."

We hope Mr. Gray will favor us with a more extensive account of Olympia, and the surrounding country, as many of our readers are interested in that part of the West.

**MILL SPRING.**

W. A. Anthony and wife anticipate visiting relatives in Georgia this winter. They will leave here before Christmas.

H. K. Finger and wife and Messrs. J. D. Carpenter and J. N. Mitchell, spent last Sunday afternoon at the home of Mrs. E. L. Hague.

J. D. Sitton and daughter, Miss Ester, of Greenville, S. C., are visiting the Carpenter family this week. The young lady and her aunt, Miss S. J. Carpenter, were in town last Monday.

Israel Arledge, accompanied a number of young ladies to Big Level last Sunday and on their return home, his mules became frightened and ran away. So far particulars have not been learned, but we report two ladies who were hurt, viz: Misses Maggie and Etelka Arledge. It is also reported that two or three buggies were broken during the day.

A goodly number of persons passed through town last Sunday, enroute to Big Level Baptist Church to attend the Sunday school Convention and Temperance Rally, which was conducted by Revs. W. M. Whiteside and John M. Walker. About 300 people attended. The writer did not attend but friends report that, notwithstanding the severe cold weather, a very pleasant day was spent.

**"Big Four"**

Best Route to

California  
Colorado  
Texas

via

St. Louis

WARREN J. LYNN, W. P. DEWEE,  
Gen'l Pass & Ticket Agt. Gen'l Pass & T. A.  
CINCINNATI, O.

**VERY LOW RATES**

MANY POINTS

REACHED VIA

**THE SOUTHERN RAILWAY.**

Centennial celebration of transfer of the Louisiana Purchase from France to the United States. Account above occasion Southern Railway will sell tickets to New Orleans, and return, on Dec. 16, and 17, with final limit Dec. 22, 1903. Rate one first class fare plus 25c for round trip.

Grand Lodge Masons, (colored) Washington, D. C. Tickets on sale Dec. 6, 7, 8, with final limit Dec. 15, 1903. Rate Tariff 2 Circular 1900.

American Economic Association and American Historical Association, New Orleans. Tickets on sale Dec. 25, 26, 27, 1903, with final limit Jan. 5, 1904. Rate one first class fare plus 25c for round trip.

Annual Meeting Southern Educational Association, Atlanta. Tickets on sale Dec. 30, 1903, final limit Jan. 3, 1904. Rate one first class fare plus 25c plus \$3.00 membership fee.

Wilmington, N. C. Poultry Show. Tickets on sale Dec. 13, 14, 15, 16, with final limit Dec. 20, 1903. Rate one and one-third rate for the round trip.

Christmas Holidays Excursion Rates, Season 1903-4. To all points east of the Mississippi and south of the Ohio and Potomac rivers, including St. Louis, and intermediate points on L. & N. R. Co., M. & O., and Southern Railway (interstate and intrastate). Rate one and one-third first class stand one way fare plus 25c for the round trip (minimum rate 50c) Dates of sale Dec. 23, 24, 25, and 31, 1903, and Jan. 1, '04, with final limit Jan. 4, 1904. EXCEPT for teachers and students of schools and colleges upon presentation and surrender of certificates signed by Superintendents, Principals, Presidents of the various institutions, tickets will be sold on Dec. 16 to 22, 1903, inclusive, with final limit Jan. 8, 1904.

J. H. Wood,

District Passenger Agent,

Asheville, N. C.

**NOTICE.**

To the friends and patrons of the Bank of Rutherfordton: I want to say that in this day of burglary and safe robbery, all monies deposited in this bank will be safe. For in keeping with our usual precaution we carry burglary insurance to cover all losses in case robbers should blow up our safe. We invite all persons having money to deposit to place it in our safe and it will be protected. Remember this is the first and oldest bank in the county and has withstood all test for twelve years. While others have failed, the Bank of Rutherfordton stands. Bring us your deposits and all your valuables for safe keeping. Soliciting all your business, I beg to be  
Yours truly,  
D. F. MORROW,  
President.

**THE WINTER RESORTS SOUTH**

REACHED VIA

**SOUTHERN RAILWAY.**

The Southern Railway announces the sale of round-trip Winter Excursion tickets to all the principal resorts of the South beginning October 15, 1903.

The winter resorts of North and South Carolina, Georgia and Florida are especially inviting to those in search of health or pleasure. In these States are such noted resorts as Pinehurst, N. C., Camden, Aiken, Summerville, Charleston, S. C., Augusta, Savannah, Brunswick, Jekyll Island and Thomasville, Ga., Jacksonville, St. Augustine, Ormond, Daytona, Palm Beach, Rockledge, Miami and Tampa, Fla., also the resorts of Nassau and Cuba, best reached via the Southern Railway.

Tickets on sale up to and including April 30, 1904, limited to return until May 31, 1904.

Southern Railway affords elegant train service, with the largest Pullman Drawing Room Sleeping Cars, operated through between principal cities and resorts, elegant Dining Car service, and everything for the comfort and pleasure of the traveler.

ASK nearest Ticket Agent for further information and descriptive literature.

**LOCAL PRODUCE MARKET.**

CORRECTED WEEKLY BY THE CHALLENGER COMPANY.

Corn, per bushel	\$ .80
White beans, per bushel	2 50
Colored " " "	2.00
Mountain Irish Potatoes	.75
Sweet " " "	.50
Baldwin apples	1.00
Corn meal	.85
Compound lard, per lb.	.11
Kettle rendered, " "	.12 1-2
Country butter " "	.20
Eggs " doz.	.29
Hens each	.30
Broilers " 15 to	.20
Clear side meat, p-r lb.	12 1-2

In gambling it is well to quit playing when the game is at its best. In advertising it is best to go it all the stronger when returns prove that it isn't a game of chance, but a sure means to an end.—Jed Scarboro.

**Central Industrial Institute.**

A well equipped School for both sexes.

Primary, Intermediate, College Preparatory.

A temperance community with good moral and social surroundings. Special attention given to students who have been deprived of early educational advantages. Good Literary Societies. A good library and reading room open to all students without extra charge.

Write for information to  
**Rev. Marion Whiteside, Prin.**  
COLUMBUS, N. C.

Capital \$10,000 Surplus \$3,000.  
ESTABLISHED 1892.

**The Bank of Rutherfordton,**

NORTH CAROLINA.

Invites all your business. Loans of good security. Pays interest on time deposits. Is the depository for state funds by order of the state treasurer. Bring or send us all your business.

D. F. MORROW,

J. W. DORSEY, PRESIDENT.  
ACTING CASHIER.

**BARRED PLYMOUTH ROCKS.**

A good winter laying strain. Eggs for hatching and stock for sale.

**SCOTCH COLLIE SHEPHERD PUPPIES.**

Thoroughbred stock at moderate terms. Address

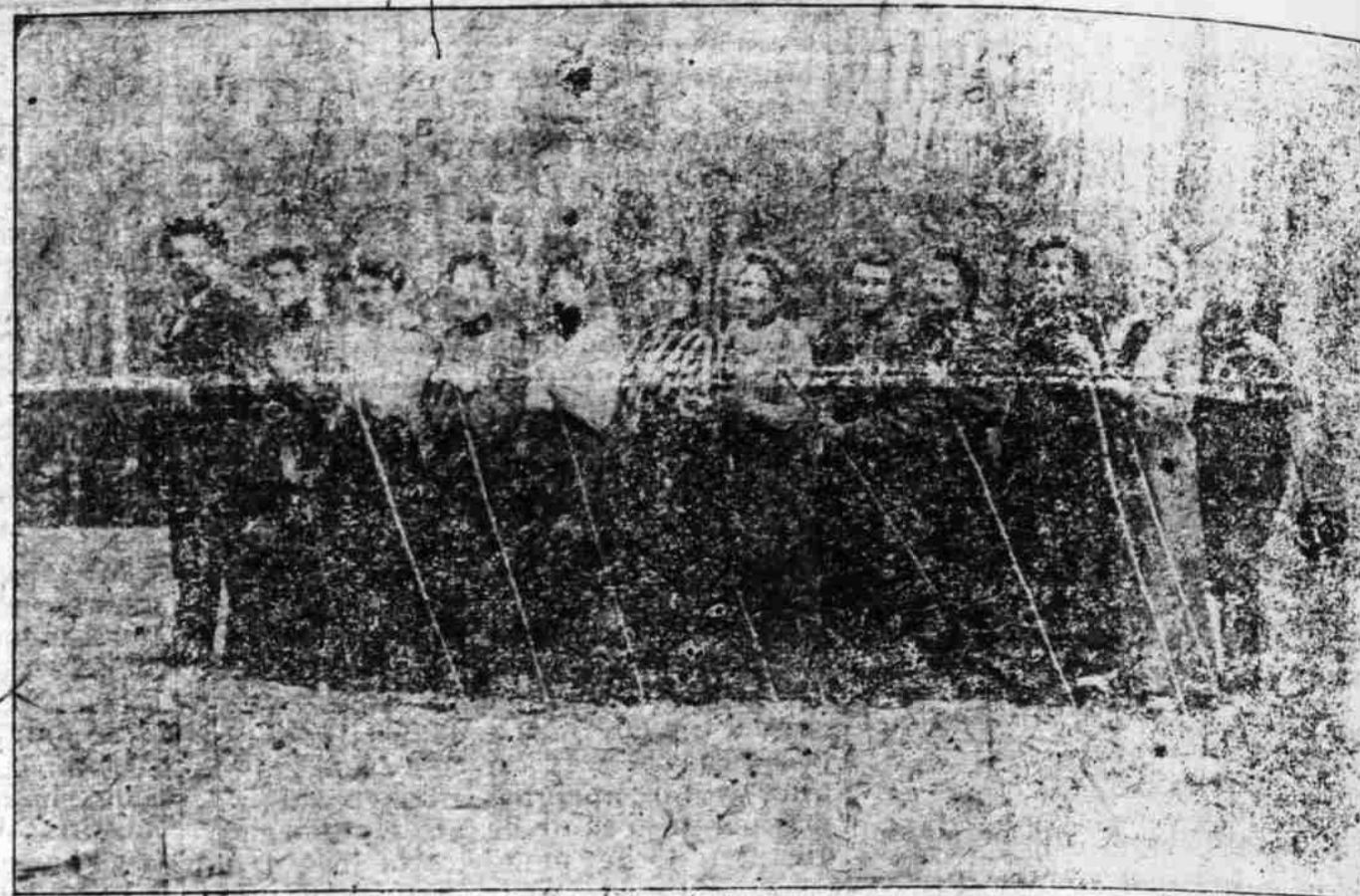
**GEORGE E. WHITESEL,**  
HARRISONBURG,  
Rural Route 6. VIRGINIA.

**TO CURE A COLD IN ONE DAY**  
Take Laxative Bromo Quinine Tablets. All druggists refund the money if it fails to cure. E. W. Grove's signature is on every box. 25 cts.

**LOG CABIN INN**

Now Open For Winter Guests.

The Inn is three thousand feet above sea level, nestling among the mountains, surrounded by a level serpentine drive two miles in length, with mountain peaks five hundred feet above, which, in turn, have winding paths to summits. The many springs which flow from these peaks form the head waters of the famous Shunkawakan Falls. A fine place to spend the Winter. Healthy climate, plenty of fruit and good spring water. For other information call or address



WE ARE ON THE WAY TO LOG CABIN INN IN SPRING MOUNTAIN PARK.

**Mrs. M. E. STEVENSON, Proprietress,**  
Columbus, N. C.

**JAS. P. MORRIS**  
ATTORNEY AT LAW.

Located in Office Formerly Occupied by Geo. C. Justice, Opposite Court House.

COLUMBUS, - N. C.

TELEPHONES:

Office: No. 7. Residence: No. 14.

**A GOOD HOUSE**

of six rooms and one-half acre lot in town of Columbus for sale. For particulars apply to

**L. H. CLOUD, COLUMBUS,**  
N. C.

50 YEARS' EXPERIENCE

**PATENTS**

TRADE MARKS  
DESIGNS  
COPYRIGHTS & C.

Anyone sending a sketch and description may quickly ascertain our opinion free whether an invention is probably patentable. Communications strictly confidential. HAMBSON on Patents sent free. Oldest agency for securing patents. Patents taken through Munn & Co. receive special notice, without charge, in the

**Scientific American.**

A handsomely illustrated weekly. Largest circulation of any scientific journal. Terms, \$3 a year, four months, \$1. Sold by all newsdealers.

**MUNN & Co. 361 Broadway, New York**  
Branch Office, 625 F St., Washington, D. C.

NOTICE OF BANKRUPT SALE.  
By virtue of the power vested in me as trustee of the estate of R. L. Garren, bankrupt, I will, on Thursday the 10th day of December, 1903, at the court house door in Columbus, N. C., at 12 o'clock noon, sell to the highest bidder, for cash, the following described land, viz: One town lot in the town of Saluda, N. C., on Henderson street, adjoining lands of Mrs. S. E. Tiner, 7 F. Thorne and others, and contains 111 feet front by 210 feet deep. Also on Friday the 11th day of December, 1903, I will sell a lot of various book accounts to the highest bidder for cash, at Saluda, N. C., at eleven o'clock a. m. The object of said sale is to make assets for the creditors of the said R. L. Garren, bankrupt. P. S. RAMSAY, Saluda, N. C., Nov. 9, 1903. Trustee.

**A Better Investment**

than an Ad in THE NEWS cannot be made by any merchant. It goes into all parts of Polk County. The rates are low and the returns are good. Try it. :: :: :: :: ::

**Mountain Cottages**

A few cozy cottages for rent, situated in Spring Mountain Park on the top of the mountain. A delightful place to spend the Summer. The cottages are located in picturesque spots and are near "Log Cabin Inn" and "Ben Cragen." For other information apply to the

**Will You Sell Your Farm?**

I want to communicate with parties in Polk county who have lands or farms for sale. I have communications from outside parties wanting to buy farms and timber land in this county and may be able to find a buyer for you. Call on me or write the description of your farm and I will try to find a purchaser.

POLK COUNTY NEWS **JAMES P. MORRIS,** - Columbus, N. C.

**Too Busy Have We Been**

To notify our numerous customers and friends that we handle

**WINTER HARDWARE ALSO.**

Somehow, they have found it out, and are coming, not singly, but in groups and pairs, to make their purchases of cook-stoves, heaters, wagons, buggies, harness, etc. Yes, we have Christmas goods, too. Express wagons for the little boys. Pearl handle knives for your wife, sister or sweetheart. A beautiful line of blue steel enameled ware, porcelain lined; also gray steel or agate ware for your wife—and don't slight her—for she is the flower of your home. Shot guns for the boys, and many other articles too numerous to name. Write, call or phone (No. 9) and we will answer.

**Tryon Supply Co.,**  
TRYON, N. C.

**First National Bank of Spartanburg**

GROSS ASSETS	\$648,127
INDIVIDUAL DEPOSITS	\$336,198
BANK DEPOSITS	33,542
TOTAL DEPOSITS	369,740
CASH ON HAND AND RESERVE AGENTS	118,706

The FIRST NATIONAL BANK and its savings department, the FIDELITY LOAN AND TRUST COMPANY, have today assets amounting to

**\$894,300.00**

AS STRONG AS THE GRANITE FOUNDATION UPON WHICH WE ARE BUILT.  
W. E. BURNETT, PRESIDENT. JOHN B. CLEVELAND, VICE-PRESIDENT.  
J. W. SIMPSON, CASHIER. A. M. CHEITZBERG, ASST. CASHIER.

**MELVIN HILL M'F'G AND SUPPLY COMPANY**

Are now ready for ginning Cotton. Ginning 75 cents per bale. Bagging and Ties, 40 cents per bale. We pay railroad prices for cotton and seed. Manufacturers of Flour and Lumber. Seed Wheat 1.00 per bushel. GEO. A. BRANSCOM, Pres.,  
Melvin Hill, N. C.

**R. A. LEONARD,**

Painter, Paper Hanger and House Decorator,  
TRYON, N. C.

Color Cards and Samples of Wall Paper Upon Application.  
Estimates on Work Cheerfully Furnished.

**Xmas Gifts**

Will soon be the uppermost thought in the minds of the public, and the Merchant who has anything in that line to offer, or who is after the

**Xmas Trade**

of the citizens of Polk county will increase his sales many times by advertising his Holiday Goods in the columns of

**The News.**