

NO LIMIT ON PURCHASES

# HAWTHORN STAINLESS COOKWARE

BY WESTBEND

- 1 Qt. Sauce Pan with Cover \$1.99
- 2 Qt. Sauce Pan with Cover \$2.89
- 3 Qt. Sauce Pan with cover \$3.39
- 2 Qt. Inset Pan \$1.99
- 8" Open Skillet \$2.59

14-INCH x 17-INCH STOVE MATS EACH **★ 39c**

MOUNT OLIVE BRAND

# PICKLES

FRESH KOSHER DILLS

1/2 GAL. JAR **49c**

FRESH CUCUMBER CHIPS

1/2 GAL. JAR **59c**

## STOCK YOUR FREEZER DURING OUR SPRING BEEF SALE



"Super-Right" Heavy Beef 25 to 30-Lb. Avg. **BEEF RIB 10-IN. CUT PER LB. 49c**

"Super-Right" Heavy Beef 330 to 390 Lb. **BEEF SIDE PER LB. 39c**

"Super-Right" Heavy Beef — 160 to 190 Lb. Avg.

**HINDQUARTER PER LB. 49c**

• "Super-Right" Quality Heavy Grain Beef — 170 to 200 Lb. Avg.

**FOREQUARTER PER LB. 33c**

• "Super-Right" Quality Heavy Beef — 80 to 100 Lb. Avg.

**TRIMMED ROUND PER LB. 49c**

• "Super-Right" Quality Heavy Beef — 80 to 100 Lb. Avg.

**BEEF ARM CHUCK PER LB. 35c**

• "Super-Right" Quality Heavy Beef — 45 to 60 Lb. Avg.

**FULL BEEF LOIN PER LB. 63c**

• "Super-Right" Quality Heavy Beef — 25 to 30 Lb. Avg.

**BEEF SHORT LOIN PER LB. 69c**

• "Super-Right" Quality Heavy Beef — 20 to 25 Lb. Avg.

**BEEF SIRLOIN BUTT PER LB. 59c**

Like saving money... then come shop A&P... stock your freezer with our guaranteed to please heavy grain fed beef. Every cut is sold to you on a money back guarantee if you're not completely satisfied. During this sale we will cut your freezer beef purchases to your specifications, wrap in market paper, and mark the contents on each package at no extra charge; or if you desire, your meat will be wrapped in freezer paper at an additional cost sufficient only to cover the cost of freezer paper. Don't miss this big sale. Come in today and place your order. You may pick it up later. PRICES IN THIS AD ARE EFFECTIVE THRU SATURDAY, MARCH 7th.

# EXTRA Low Prices!

# STEAK

Boneless Top or Bottom **ROUND STEAK LB. 69c**

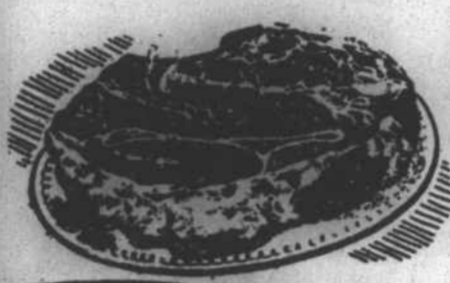
- T-BONE
- CUBED
- PORTERHOUSE
- SIRLOIN LB.

# 79c

CHUCK BLADE STEAK lb. 45c BONELESS RIB STEAK lb. 85c

"SUPER-RIGHT" HEAVY GRAIN FED BEEF

# ROAST



**Chuck Blade LB. 35c**

Boneless Chuck Roast lb. 49c  
Boneless Brisket lb. 49c  
Shoulder Clod Roast lb. 53c

**7-IN. RIB ROAST**  
2nd & 4th Ribs lb. 49c First 4 Ribs lb. 59c

**BONELESS STEW BEEF lb. 49c**  
BONE-IN PLATE STEW lb. 13c

**GROUND BEEF**  
"Super-Right" Lean **LB. 37c**

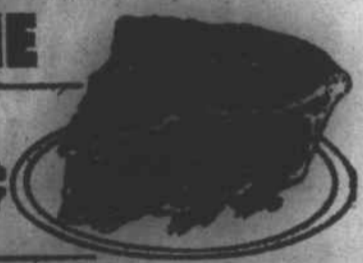
## Extra Big Value!

Florida Oranges 5 Lb. 49c  
APPLES WESTERN RED DELICIOUS 2 Lb. 29c  
White Cabbage 2 Lb. 9c

FRESH **SLAW** 8 Oz. Pkg. 17c

**CARROTS 2 2-LB. BAGS 29c**

THE APPLE OF EVERYONE'S EYE!  
1 1/2-LB. SIZE JANE PARKER  
**APPLE PIE**  
REG. 49¢ SPECIAL  
SAVE 10¢ **39c**



JANE PARKER 1-LB.-9-OZ. GOLD OR  
**MARBLE POUND CAKES**

MARVEL ICE CREAM  
1/2 Gal. Ctn. **49c** EACH **49c**



## LENT VALUES!

- SPECIALY PRICED
- SULTANA MACKEREL** 2 15-Oz. Cans **29c**
  - EXCEL MIXED NUTS** 14-Oz. Can **69c**
  - CHUM SALMON** 1-Lb. Can **49c**
  - APPLE SAUCE** 2 1-Lb. Cans **29c**

A&P FROZEN SLICED STRAWBERRIES 2 10-Oz. Pkgs. **39c** 1-Lb. Pkg. **29c**

**IONA CUT GREEN BEANS** 4 1-Lb. Cans **45c**

**MORTON FROZEN COCOANUT PEACH OR APPLE PIES** 3 20-Oz. Pkgs. **79c**

**TOMATO KETCHUP** 2 14-Oz. Bottles **35c**

**10¢ off Sale!**

**dexo** Now HIGHLY UNSATURATED

A&P's Vegetable Shortening for everything you bake and fry.

**3 LB. CAN 49c**



• SERVE STRAWBERRY SHORT CAKE OR SERVE WITH JANE PARKER DESSERT SHELLS  
Juicy, Sparkling Fresh

# Strawberries 3 PINT BASKETS \$1.00

Great For  
• Dessert  
• Freezing  
• Jams & Jellies

COLGATE BAGGIES 50 Oz. Pkg. **29c** CRISCO SHORTENING 2 1/2 Lb. 33c 3 Lb. 79c WHITE HOUSE EVAPORATED MILK 6 12-Fl.-Oz. Cans in A Carton **77c** CHED-O-BIT PASTEURIZED AMERICAN CHEESE SPREAD 2-Lb. Pkg. **69c**