

# THE eat IN THE meat

## You Can See It...You Can Taste It!



The EAT in the MEAT that makes "Super-Right" your best buy shows up in a way you can see. You see it in the corn-fed beef steaks and hearty rib roasts that have the wasteful fat and bone trimmed away. You see it in bright color of the freshly ground beef that's double-ground for tenderness. You'll see it where it counts — in the meat you serve your family — in your budget, too!



The EAT in the MEAT that A&P promises, starts long before you see it, however. It begins with A&P selections from the nation's top packers. They know "Super-Right's" strict quality standards for beef, pork, lamb, veal and poultry. And our buyers know that if every pound can't be guaranteed — it's not "Super-Right" quality.



The EAT in the MEAT comes only from constant care. That's why A&P maintains its own gov't.-inspected warehouse devoted exclusively to meat processing. Under the watchful eye of our staff of experts passes every pound of meat destined for your family. This care continues right up to the minute your purchase is made. You can count on "the EAT in Super-Right meat" — and on A&P's money-saving prices — because we care about YOU.



The EAT in the MEAT is guaranteed at A&P. The meat we sell must satisfy your family completely or your money will be refunded. All persons in your A&P meat department know this — and they are as determined as we to offer the best meat service in town.

COME SEE... PROVE TO YOURSELF THAT "SUPER-RIGHT" GIVES YOU THE EAT IN THE MEAT

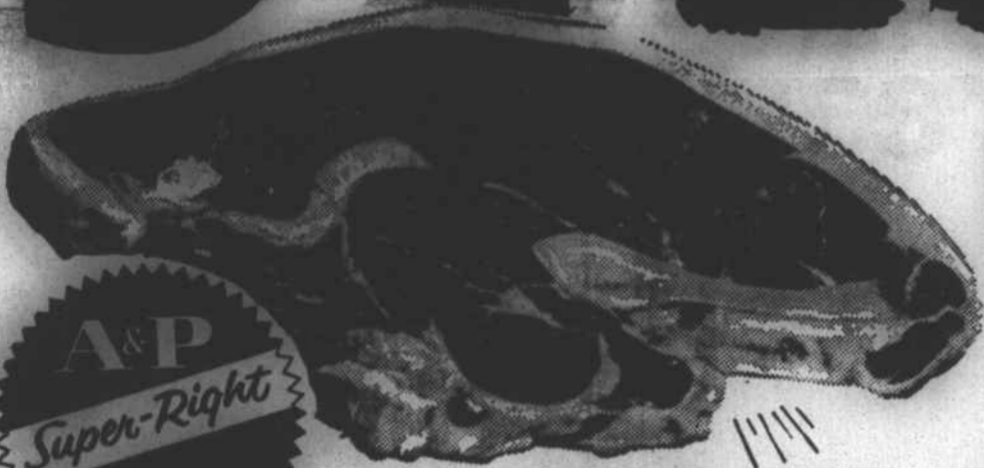
CHOOSE THESE VALUES AND GET THE eat IN THE meat

"Super-Right" HEAVY CORN FED BEEF SIRLOIN

# STEAKS



PRICES IN THIS AD EFF. THRU MAY 9TH



GUARANTEED TO PLEASE YOU OR YOUR PURCHASE WILL BE REFUNDED



LB.

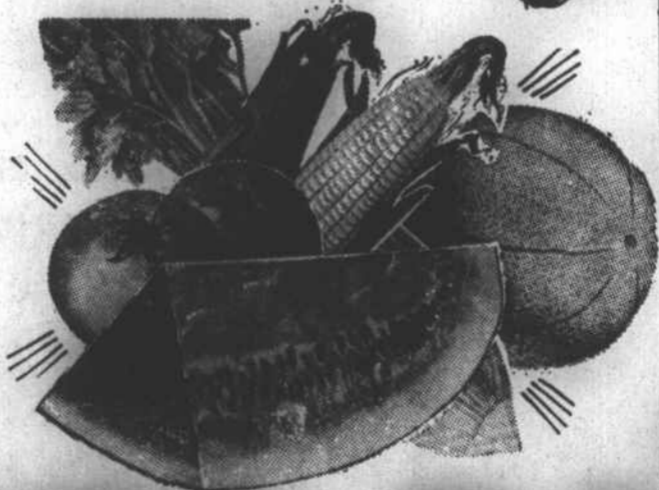
# 75¢



- Marcal Medeira Dinner Napkins ... 2 50-Ct. Pkgs. 39c
- Hawaiian Sunshine Yellow Punch ... 14-Oz. Can 37c
- Glade Mist Air Freshener ... ALL SCENTS 7-Oz. Can 59c
- Star-Kist Light Meat Chunk Tuna ... 6 1/2-Oz. Can 33c
- Pepsodent Dental Cream ... Giant Tube 53c
- Nabisco Bacon Thin Crackers ... 8 1/2-Oz. Package 37c

**LIPTON**  
 Packaged Tea 4-Oz. Pkg. 43c  
 Tea Bags 48 Ct. 3 1/4-Oz. Package 65c  
 INSTANT TEA 1 1/2-Oz. Jar 49c 3-Oz. Jar 89c

**ASSORTED SPARKLE GELATINS**  
 2 6-Oz. Pkgs. 27c



## FROZEN FOODS

- MINUTE MAID ORANGE DELIGHT 2 6-Oz. Cans 39c
- MORTON REGULAR DONUTS 18 Count - 10-Oz. Package 35c
- CAP'N JOHN'S PAN-READY BREADED SHRIMP 10-Oz. Pkg. 49c 2 Lb. Pkg. \$1.49
- RICH'S CHOCOLATE ECLAIRS 4-Count Package 39c
- DIXIE GARDEN CROWDER PEAS 1-Lb. 8-Oz. Package 39c
- DIXIE GARDEN Speckled Butterbeans 1-Lb. 8-Oz. Pkg. 39c
- MORTON APPLE, CHERRY, PEACH OR COCOANUT-CUSTARD PIES 3 20-Oz. Pkgs. 79c

## A&P ORANGE JUICE

6-Oz. Can 25c 12-Oz. Can 47c 6 6-Oz. Cans In a Carton \$1.45

- GREEN CUCUMBERS ... 3 For 19c
- FRESH RADISHES ... 2 8-Oz. Pkgs. 15c
- ENGLISH PEAS 2 Lbs. 25¢

**CARROTS 2 Lb. Bag 15c**



**ANN PAGE KETCHUP SPECIAL**

2 1-LB., 4-OZ. BOTTLES **45¢**

**ANN PAGE**

Creamy Smooth or Krunchy

**Peanut Butter**

12-OZ. JAR SPECIAL **33¢**

# CANTALOUPE

Fresh Green Beans 2 Lbs. 29¢

Fresh Yellow Corn 8 EARS 49¢

**3 45-SIZE \$1.**

MONDAY  
8:30 A. M.  
6:30 P. M.

TUESDAY  
8:30 A. M.  
6:30 P. M.

WEDNESDAY  
8:30 A. M.  
12:30 NOON

THURSDAY  
8:30 A. M.  
6:30 P. M.

FRIDAY  
8:30 A. M.  
7:00 P. M.

SATURDAY  
8:30 A. M.  
8:00 P. M.

**A & P Food Store**  
120 E. College St. Warsaw, N. C.