

**we care**



# NOW A&P IS REALLY IN THE SOUP (SOUP BUSINESS, THAT IS)

For years, our Ann Page Division has made great soups... but there were only 3: Tomato, Tomato Rice and Cream of Mushroom.

For some time, we've been working on new varieties.

But you know fussy A&P.

If they are going to be called Ann Page,

there can't be better soups... and you can't rush perfection.

It's taken time but it was worth it.

When you taste our 4 new varieties, you'll agree.



And when you see the prices... you'll want to buy them all. You should, because they just might be the best values in the store.

One more thing, all 7 have shiny new green, red and gold labels.

Now that A&P is really in the soup business, shouldn't A&P be your store?

COPYRIGHT © 1963, THE GREAT ATLANTIC & PACIFIC TEA CO., INC.

## Ann Page Foods! SOUP SALE

**ANN PAGE CONDENSED**

- VEGETABLE
- TOMATO
- VEGETARIAN VEGETABLE

4 10 1/2-Oz. Cans **49c**

- ★ ANN PAGE VEGETABLE BEEF
  - ★ ANN PAGE TOMATO RICE
  - ★ ANN PAGE CHICKEN WITH RICE
- 4 10 1/2-Oz. Cans **59c**

**ANN PAGE ECONOMY SALTS**

- GARLIC SALT 3 1/2-Oz. Bot. 19c
- CELERY SALT 3 1/2-Oz. Bot. 19c
- ONION SALT 3 1/2-Oz. Bot. 19c

**ANN PAGE PURE GROUND, BLACK PEPPER** 2-Oz. Can 25c 4-Oz. Can 39c

• ALL FLAVOR — ANN PAGE SPARKLE

**GELATINS** 4 3-Oz. Pkgs. **33c**

**ANN PAGE MACARONI & CHEESE DINNER** 2 7 1/2-Oz. Pkgs. **39c**

**A & P SMOOTH WHIP TOPPING** 4 OZ. 35c 2 OZ. 19c

### Bakery Buys!

- ★ Jane Parker Crescent Pound Cake 15-Oz. Pkg. 3 Pkgs. Of Your Choice **\$1.00**
- ★ Jane Parker Jelly Rolls 11-Oz. Pkg.
- ★ Jane Parker Peach Pies 24-Oz. Pkg.

**JANE PARKER WHITE ENRICHED REGULAR OR SANDWICH BREAD** **4 99**

**JANE PARKER GLAZED DONUTS** 17-Oz. 12-Ct. Pkg. 39c 11-Oz. 8-Ct. Pkg. 29c

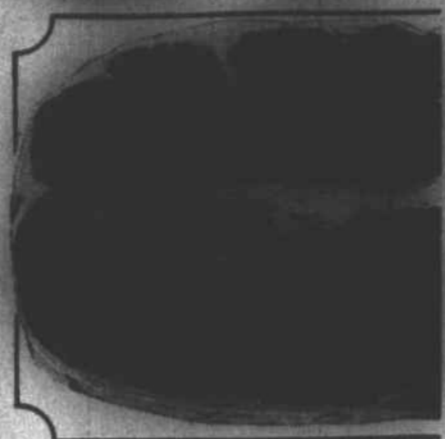
### Frozen Food Buys!

**A&P GREEN PEAS** 3 10-Oz. Pkgs. **49c** 2-Lb. Pkg. **45c**

**A&P Forked Lima Beans** 2 Lb. Pkg. **59c** **Sultana Green Peas** 4 10-Oz. Pkgs. **45c**

**MARVEL ICE CREAM** 1/2 Gal. Can. **53c**

# "SUPER-RIGHT" HEAVY CORN-FED BEEF STEAKS



**BONELESS TOP ROUND LB. 89c**

**BONELESS BOTTOM ROUND LB. 85c**

"SUPER-RIGHT" **BONELESS RIB STEAKS**

Per Lb. **99c**

"SUPER-RIGHT" **OVEN-READY RIB ROASTS**

Per Lb. **89c**

NO LIMIT ON PURCHASES AT A&P!

• "SUPER-RIGHT" QUALITY HEAVY CORN-FED BEEF **CUBED ROUND STEAKS** Lb. **95c**

• "SUPER-RIGHT" QUALITY HEAVY CORN-FED BEEF **CHOPPED SIRLOIN STEAKS** Lb. **89c**

"SUPER-RIGHT" LEAN, FRESHLY **GROUND BEEF** Lb. **49c**

"SUPER-RIGHT" LEAN, BONELESS **STEW BEEF** Lb. **59c**

• "SUPER-RIGHT" QUALITY **ALL MEAT FRANKS** 1-Lb. Pkg. **49c**

• ALLGOOD SMOKED FLAVORED **SLICED BACON** 1-Lb. Pkg. **53c** 2-Lb. Pkg. **\$1.05**

"SUPER-RIGHT" FRESH PORK LOIN

**PORK CHOPS**

Center Cut RIB CHOPS Lb. **65c**

Center Cut LOIN CHOPS Lb. **69c**

**END CUT PORK CHOPS** Lb. **49c**

**RIB THIRD LOIN THIRD**

PORK LOIN ROAST Lb. **45c**

PORK LOIN ROAST Lb. **49c**

**QUARTER LOIN SLICED IN TO PORK CHOPS** Lb. **55c**



"Super-Right" Fresh **FRYER PARTS!**

**FRYER BREASTS** Lb. **59c**

**FRYER THIGHS** Lb. **45c**

**CHOICE PARTS** COMBINATION PACKAGE Lb. **49c**

**DRUMSTICKS** Lb. **43c** **LIVERS** Lb. **59c**

**WINGS** Lb. **29c** **GIZZARDS** Lb. **29c**

• CAP'N JOHN'S FROZEN BREADED **FISH STICKS** 10-Oz. Pkg. **35c** 1-Lb. Pkg. **53c**

**CAP'N JOHN'S CONDENSED OYSTER STEW** 10-Oz. Can **35c**

### Appetizingly-Good Groceries!

**A&P SPECIALLY PRICED! SLICES OR HALVES YELLOW CLING PEACHES** 2 29-OZ. CANS **65c**

- A&P VACUUM PACKED! SPECIALLY Blended Coffee 2 Lb. Can **\$1.29**
- IDEAL FOR DRINKING OR COOKING! A&P Evaporated Milk 3 13-FI. Oz. Cans **49c**
- WITH LEMON & SUGAR Our Own Instant Tea Mix 14-Oz. Jar **59c**
- PURE CANE, GRANULATED A&P Sugar 5-Lb. Bag **59c** 10-Lb. Bag **\$1.17**
- 20-GAL. GALVANIZED STEEL Garbage Cans Each **\$1.99**
- A&P BRAND SHREDDED Sauerkraut 2 1-Lb. 11 Oz. Cans **49c**
- ARISTOCRAT SALTINE Crackers 2 1-Lb. Pkgs. **39c**
- PASTEURIZED MEL-O-BIT Cheese Slices AMERICAN PIMENTO SWISS 6-Oz. Pkg. **25c**
- A&P SOLID PACK White Meat Tuna 7-Oz. Can **33c**

## A&P's EASTER CANDY

- Ann Page Marshmallow Eggs 12-Oz. Pkg. **29c**
- Ann Page Candy Cotton Tails 12-Oz. Pkg. **35c**
- Ann Page CHOCOLATE MARSHMALLOW Rabbits 4 1/2-Oz. Pkg. **29c**
- Ann Page Fudge Cream Eggs 3 2-Oz. Pkgs. **25c**
- Ann Page Candy Pops 36-Ct. Pkg. **29c**
- Ann Page RED & BLACK Jelly Eggs 1-Lb. Pkg. **29c**
- Ann Page Non-Parail Gum Eggs 14-Oz. Pkg. **29c**
- Ann Page Fruit & Nut Eggs 8-Oz. Pkg. **35c**

**JELLY EGGS** ANN PAGE FRUIT FLAVORED CANDY 1-Lb. Pkg. **29c** 1 3/4-Lb. Pkg. **49c**

### Fresh Fruits and Vegetables!

# STRAWBERRIES

**3 PINT BASKETS \$1.00**

- FRESH ASPARAGUS CALIFORNIA GROWN Lb. **39c**
  - WHITE POTATOES 10 Lb. Bag **35c**
  - CRISP CELERY 2 Stalks **35c**
  - FRESH PINEAPPLE Each **39c**
  - APPLES Western Red or Golden Delicious Lb. **25c**
- PRICES IN THIS AD EFF. THRU SAT., MARCH, 30th