

Wallace Summer Recreation Program

What happens when the sponsors of your children's summer recreation program can no longer continue to serve as such? Why, you do something about it instead of letting it just die --- at least you do if you live in Wallace.

And that's just what the parents of children in the Wallace Elementary School did when the JayCees found it impossible to continue sponsoring the recreation program about three years ago. First, they called a meeting of all parents and friends of the school children. They discussed methods and means of continuing the program and decided to elect a commission from among their group. This they did, gave the commission full charge and full authority and dispersed, satisfied that the commission would function successfully, and it did, keeping good faith with the parents.

It elected Neal Carlton, the principal of the school, as the director for the recreational program for summer. No one knew the children better. He knew their capabilities, their capacity for effort, their background and their needs for an absorbing summer schedule, and so he worked out a plan to keep them busy and happy.

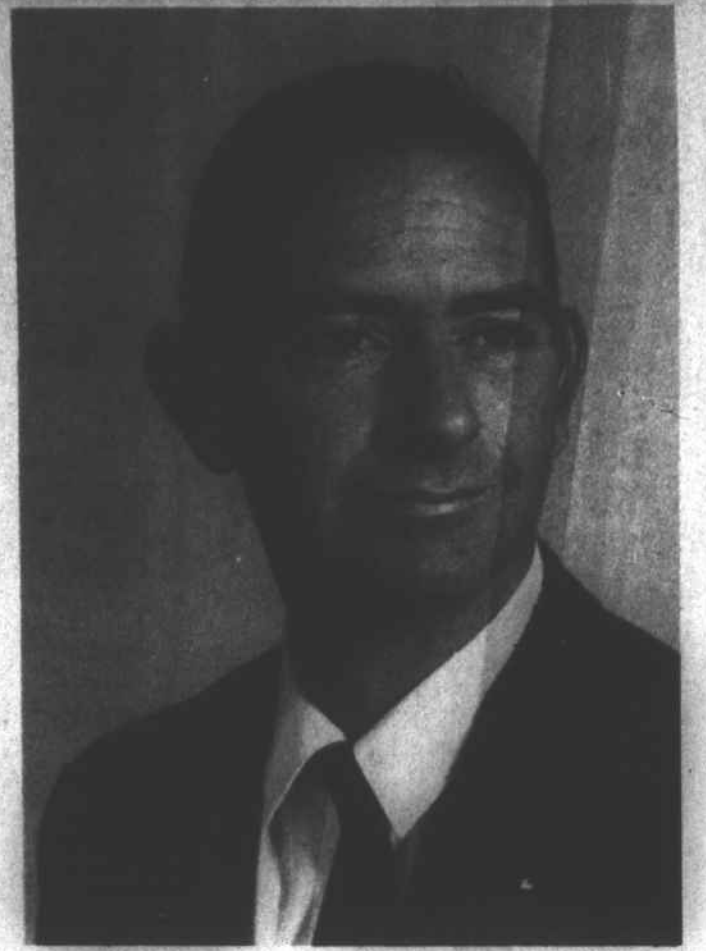
The commission went to work on the "where and how" questions. The answers came. The

American Legion ball park was secured for an activity base. They managed to be the beneficiaries of the ad rental spaces at the park and rented all spaces, thereby raising a sizeable sum to help. They accepted donations from friends, sold chances on baseballs autographed by big league players (obtained through a friend who had the right contacts) they charged \$2.00 a child for registration fee, used gate receipts. These were a few of their ways to raise money. The main expenses included insurance, labor, lights and equipment. And they have been doing it this way for the last three

years. This year the registration fee goes up to \$3.00. They regret this, but the trend of prices in these times make it necessary.

Commissioners are elected on a rotation system. At present they are as follows: Art Meyer, president; Mrs. Dovie Penny, Treasurer; Ben Goff, Mrs. Grace Howard, Dr. J. S. Blair, and Charles Sloan.

Mr. Meyer, president of the group at present, is a Life Member of the commission, and the only Life Member it has. He was elected by the commission in acknowledgement of his efforts and devotion throughout the years. The



QUINN WHOLESALE COMPANY Of Warsaw

Quinn Wholesale Company - Health Careers - A Profile Of Progress - TV Program

As Duplin County experiences an influx of new industry home grown businesses also continue to grow as demonstrated by Quinn Wholesale Company. Not only has Quinn Wholesale been a pace setter in our county's change from a primary agricultural economy to one of broad based diversification. Through its own growth, Quinn people have also done more than their fair share in spearheading our county's progress.

Quinn Wholesale Co. had its humble beginning near Beaufort in 1936. Founded by the late T. R. Quinn as a service to the small stores in the area. It out grew its facilities and in 1943 relocated in Warsaw to be near the railroad. Milford Quinn had entered the business and led the relocation to the original location in downtown Warsaw. Soon outmoded, the warehouse was replaced by a

12,000 ft. building at the present location. This warehouse was destroyed by hurricane Hazel in 1954 and was replaced at once with one 25% larger. This addition was to be the first of many.

Now having ample facilities, the company started installing the most modern equipment available. In 1959 the first computer was installed and was to be the first in a series of the latest and most efficient electronic data processing machines.

With the passing of the founder in 1959, Milford Quinn became President in addition to his job of General Manager. He has continued to pioneer in new methods of more efficient distribution of food to retail stores.

The year of 1961 was one of great decision. It was this year that Quinn joined IGA, doubled

the size of the warehouse, and built the first refrigerated warehouse. 1963 was another year of addition - the warehouse was again doubled and the refrigerated space increased.

Now growing at a rapid rate, Quinn in 1966 obtained the franchise to supply the 7-11 stores in North and South Carolina. A refrigerated warehouse added in 1967 has brought visitors from all over the country to inspect what is the most modern frozen food facility available.

Quinn Wholesale Company has grown to be the second largest Wholesale Company in the state and is continuing to grow.

Under the direction of Milford Quinn and his brothers I. J. and Gerald the future seems very bright and more building is predicted.

A thirty-minute television program on health careers will be presented over the University of North Carolina Educational network on Thursday evening, April 11, 1968 at 6:30. The program entitled "Medicine: Need, Challenge, and You" is designed to review many of the career opportunities for students interested in medicine and the allied health fields.

This particular program, sponsored by the Medical Society of the State of North Carolina is the sixth in a series sponsored by the North Carolina Association of Professors in cooperation with its member professional groups. The series was produced with the assistance of Dick Sanvely, Program Director of the North Carolina State University's Educational TV Studio in Raleigh.

The UNC Educational network, which will carry the program, includes the following stations: WUNC-TV, channel 4, Chapel Hill; WUND-TV, channel 2, Columbia; WUNE-TV, channel 17, Linville; WUNF-TV,

channel 33, Asheville; and WUNG-TV, channel 58, Concord.

Parts of the television program were filmed at medical schools in North Carolina and features comments from medical students, Robert A. Ross, M.D., of Chapel Hill, President of the State Medical Society and David G. Welton, M.D., of Charlotte participate in the program along with H. Fleming Fuller, M.D., of Winston, serving as host physician.

Income Tax

Greensboro, N. C. - Theft and casualty losses may be deducted on Federal income tax returns under certain conditions, said J. E. Wall, District Director of Internal Revenue for North Carolina.

These deductions are available to the many people who suffer damages to grounds, dwellings, automobiles, boats, furniture, and other property used for personal and business purposes as a result of hurricanes, fires, storms, floods and other disasters.

A deductible casualty loss can result from complete or partial destruction of property. Generally speaking, it must result from an identifiable event of a sudden, unexpected, or unusual nature.

Damage to your own car resulting from a collision or accident can be deducted if not due to your willful negligence or act. You cannot deduct amounts you pay for damage to another car with which you collided.

On property held for personal use, the amount of the loss is the lesser of (1) the adjusted basis of the property or (2) the decrease in the fair market value of the property as a result of the casualty loss. From this amount you must subtract the insurance or other compensation which you receive or expect to receive.

Only the amount of the net loss of property used for personal purposes in excess of

membership is an honorary one.

Mr. Carlton, director with the Commission, sets up the program. There are six Little League Teams that are registered with Little League Leagues, Incorporated. They practice in the daytime and play games at night, three nights each week. One team of all-stars from the six teams is selected and trained as the season advances, and this all-star team competes with other all-star teams in the league area for playing in the state playoff tournaments.

There is one Pony Team and one Midget team. Each of the Little League, Pony and Midget teams, has one coach and one assistant coach. All are vol-

unteers. For the girls there are volleyball, soft ball and tennis teams.

In the season of 1967 three PACE students worked with the Recreation program. They were Connie Rivenbark and Amelia Forlaw, who worked with the girls and Danny Kier, who helped the boys.

The Commission, this year, is working to raise \$4,000.00 for their budget. They can use it all.

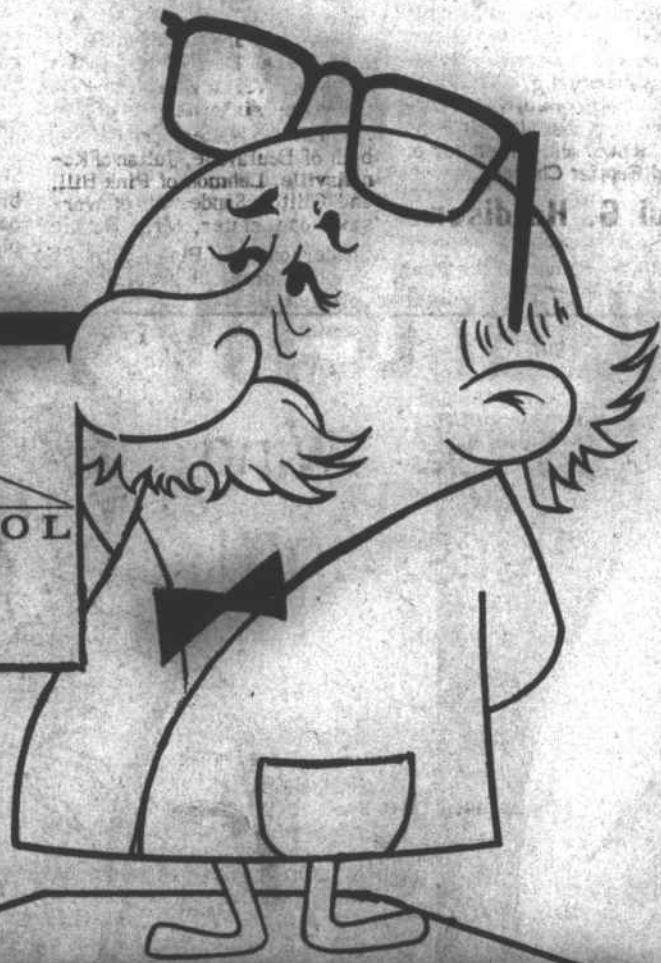
In the future, Mr. Carlton hopes to have more needed indoor activities, such as arts, crafts, and hobbies, needed additions to outdoor activity are biking, crafts for out-of-doors and camping.

taxpayers for disaster area losses occurring after the close of a fiscal year but before the regular due date of the fiscal year tax return.

Some of the loss items for which you cannot claim a deduction are accidental loss of cash or other personal property; damage due to rust or gradual erosion; damage or destruction of animals or plants by disease; termite or moth damage or amounts paid for the care of personal injuries.

Document No. 5174, which furnishes more detailed information on this subject, may be obtained by dropping a post card to the District Director, Internal Revenue Service, 320 S. Ashe Street, Greensboro, N. C. 27401.

Congratulations Duplin Farmers on your Progress in Agriculture



TORGINOL Authorized Dealer

SEAMLESS FLOORING

SEE IT NOW AT

CALL 289-3195 FOR A FREE ESTIMATE



HERRING

SUPPLY CO

ROSE HILL, N. C.

ERSKINE'S JEWELERS

STAINLESS STEEL COOKWARE



- 1 QT. SAUCE PAN WITH COVER
- 2 QT. SAUCE PAN WITH COVER
- 3 QT. SAUCE PAN WITH COVER
- 5 1/2 QT. DUTCH OVEN WITH COVER
- 10 1/2" SKILLET WITH COVER



GUARANTEE
We guarantee these stainless steel utensils to be free from defects in material and workmanship. Any part or parts thereof which are proved defective will be cheerfully replaced.

Guarantee
Please rush me _____ set of Continental Stainless Steel Cookware.
NAME _____
ADDRESS _____
CITY _____ STATE _____
 Cash Charge C.O.D.

"Kinston's Leading Credit Jewelers"

ERSKINE'S

106 N. Queen St. Dial JA 3-3708

PRE SEASON SALE

WEATHERMAKER* READY-MOUNT



ROOM AIR CONDITIONERS
5,500 Btu's



RT Series
Weathermaker
Ready - Mount 5
WEATHERMAKER

economy in price, quality in performance

119.95

No Money Down No Payments 'till June

Congratulations
Duplin County Farmers
It has
been a pleasure to serve you

HASTY

PLUMBING AND HEATING

N. Brazeele Ave. Mount Olive, N. C. Dial 658-2584