



Mrs. Mary S. Rogers Wallace - Rose Hill High School



Mrs. Nancy Williamson Kenansville Elementary



CHARITY HIGH SCHOOL BAND

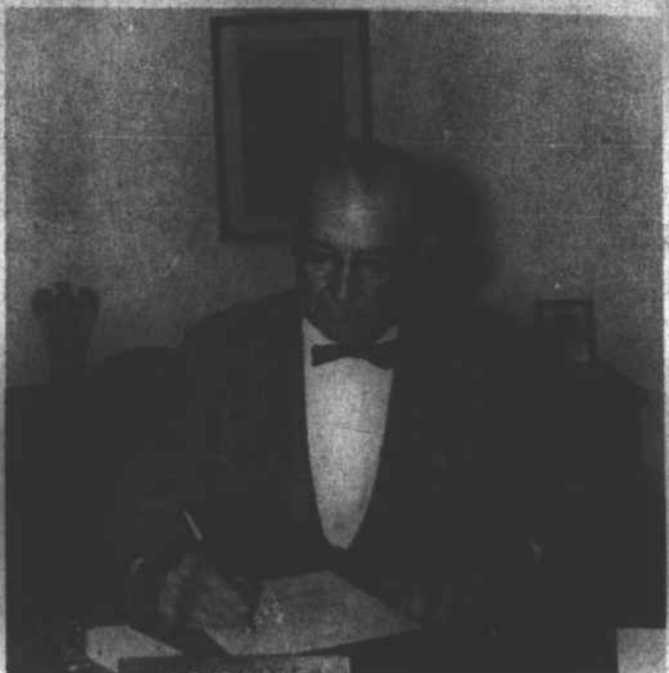
James Alderman, James R. Boney, Roland Boney, Gall Brown, Alex Dobson, Bobby Ellis, Matthew Frederick, Lynette Fennell, Cleveland Graham, William Hall, Alexander Hall, Jerry Hall, Cardell Johnson, Stanley Johnson, Henry Kea, Walter Kenan, Early Kenan, Samuel Lanier, Larry Mathis, Dorothy Merritt, Eddie Merritt, Joyce Mathis, Sylvester McCloud, Vyllice Pickett, James Pittman, Cecil Pickett, Bobby Rhodes, Harry Smith, Terry Usher, Terry Williams, Herman Wallace, Ashley Williams.

We Are Happy To Congratulate  
The Farmers In Duplin  
On Their Progress  
**DISCOUNT ON ALL  
THE FOLLOWING  
Hardware & Tractor Parts**

- All Size Lawn Mowers
- Tractor Sprayers & Pumps
- Plow Shares & Sweeps
- Poultry Supplies
- Myers Water Pumps
- Douglas Paints
- Rotary Cutter

**Beulaville Hardware  
&  
Implement Company**

Leon Lanier, Owner  
Beulaville, N. C.



Head of the Education system, O. P. Johnson, County Superintendent of Schools.

## County Education Headquarters New And Modern

Duplin County has made much progress in the field of education in recent years. School campuses have sprung

up in strategic spots in the county that compare favorably with College Campuses.

Probably one of the most visible indications of progress in the school system is the new office of the Superintendent of Schools, recently dedicated the Johnson Education Building, honoring Mr. O. P. Johnson, Superintendent.

The modern structure was erected by Sheffield Construction Company of Rose Hill at a cost of approximately \$125,000.

It contains eleven private offices, secretary pool for twelve secretaries, an assembly room, a small conference room, a kitchen and lounges. It is equipped with an electric heat pump.

Also among Duplin's newer assets is its School Garage located on North Carolina Highway 11 South of Kenansville.

The spacious lot enclosed with Cyclone fence allows uncluttered parking of all school buses with ample parking space for employees.

The garage is of block construction 68 feet wide and 168 feet long. The center section of the building, 88 feet long, provides spacious work space for the mechanics where five stalls hold tools and equipment for the mechanics.

The building also contains a paint room, wash shelter, boiler room, parts room, tire room, battery room, supervisors room, two lounges and a storage room.

Present plans call for construction of another building on the north east corner of the lot to house the food commodities available to the county under the food commodity program.

### More Than Eye-Appeal

Love at first sight is as risky when choosing a house as when choosing a mate.

Sometimes, potential homeowners are so impressed with a house's good looks, that they don't take time to check its quality before buying. After they've moved in, they find that the house has faults or requires expensive maintenance — and the romance begins to fade.

Determining the durability, serviceability and low maintenance of a house before you buy will assure more than your long-term satisfaction with it. It also safeguards your investment in terms of resale value.

Here are some hints:  
• Visit the house you like on a rainy day. It's the best time to check for possible roof or basement leakage. Danger signs of these potential problems are wet spots on attic rafters or moisture on basement walls.



MRS. SALLIE INGRAM ESEA SUPERINTENDENT

**A HAPPY EASTER**

Congratulations To  
Duplin County Farmers  
On Their Progress

**FIRE  
HAIL  
AUTO  
BONDS**

**G. S. MULDROW**

"Your Insurance Agent"

Beulaville, N. C.

**Duplin County**

**Progressive Farmers. . .**

**Use Our Facilities**

**Blanchard & Farrior**

**Whse.**



and

**B & R**

**Frozen Foods**

Wallace, N. C.

We Will Enjoy Serving  
You Again In 1968



## We're Proud Of Duplin's Progress



D. J. FUSSELL

**Yes, We're Proud to be Partners in  
The Progress of Duplin County**

**D. J. FUSSELL & CO.  
COMMERCIAL & RESIDENTIAL  
CONSTRUCTION**

Let's Aim For The Future

The hopes of a community's people build its future . . . hometown growth depends on hometown people. It works best when each and every one of us does what he should. We are proud to work for the greatest use of community potential. Let's do the work together, for each other . . . help our community to keep on growing!

**D. J. FUSSELL CO., INC.**

"BUILDERS FOR THE FUTURE"

HWY. 117

ROSE HILL, N. C.