

**32 OZ.
HUNT'S
KETCHUP**

(LIMIT 1 WITH
\$10.00 ORDER)

99¢



**5 LB. BAG
DIXIE
CRYSTAL
SUGAR**

(LIMIT 1 WITH
\$10.00 ORDER)

\$1.29

**5 LB.
BAG
SHAWNEE
FLOUR**

(LIMIT 1 WITH
\$10.00 ORDER)

79¢



**HI-DRI
TOWELS**

2/95¢



**PETER
PAN
PEANUT
BUTTER**

18 OZ.

\$1.39

**TEACHEY'S
SUPERMARKET**

ACROSS STREET FROM PINK HILL SCHOOL
PINK HILL, N. C.



**KELLOGG'S
RICE
KRISPIES**

13 OZ.

\$1.15

**ADAMS ORANGE
JUICE 12 OZ. 69¢**

**PET RITZ CREAM (CHOC., LEMON)
PIES 14 OZ. 69¢**

**AUNT JEMIMA
SYRUP 24 OZ. \$1.29**

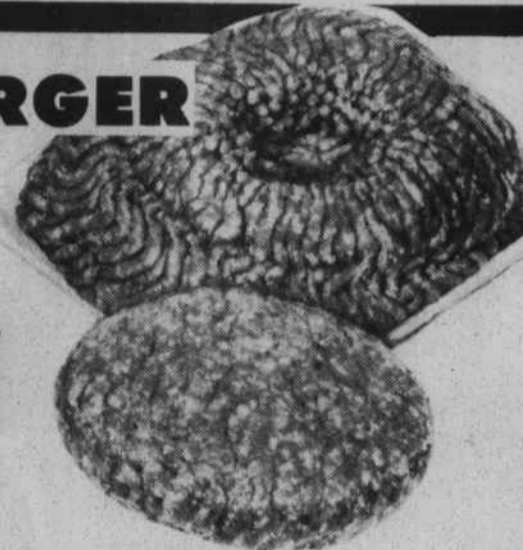
**QUAKER QUICK
GRITS 2 LB. BAG 59¢**

**SENECA APPLE
JUICE 48 OZ. 99¢**

**SAV MOR
MARGARINE
1 LB.
3/\$1.00**

HAMBURGER

**99¢
LB.**



**SMITHFIELD
FRANKS 12 OZ. 89¢**

**SMITHFIELD
BACON 1 LB. PKG. \$1.39**

**SMITHFIELD
BOLOGNA 1 LB. \$1.19**

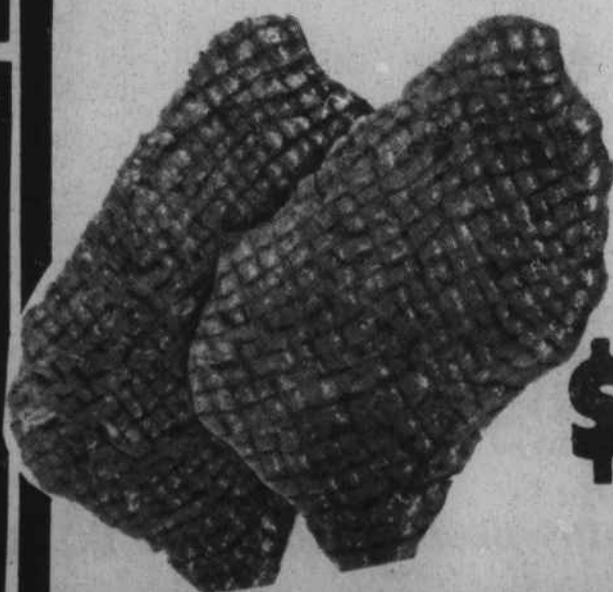


**FULL
CUT
ROUND
STEAK**

**\$1.69
LB.**

**TOP
ROUND STEAK LB. \$1.59**

**BOTTOM
ROUND STEAK LB. \$1.49**



**CUBE
STEAK**

**\$1.99
LB.**

**DEL MONTE CRUSHED NO. 2 CAN
PINEAPPLE 65¢**

**STOKELY'S GREEN
BEANS 303 CAN 4/\$1.00**

**APRIL SHOWER
PEAS 303 CAN 3/\$1.00**

**WHITE
POTATOES 10 LB. \$1.09**

**5 LB.
ORANGES \$1.39**

**RUTABAGAS
14¢ LB.**



**100
COUNT
LIPTON
TEA BAGS**

\$1.89



**2 LITER
PEPSI
OR COKES
79¢**



**COLD
POWER
(LIMIT 1 WITH
\$10.00 ORDER)**

\$1.19



**DEL MONTE
CREAMSTYLE
OR WHOLE KERNEL
CORN
303 CAN**

2/79¢