

BEULAVILLE

**WESTERN AUTO**

associate store

SEE US FOR BRIGGS & STRATTON AND TECUMSEH LAWN MOWER PARTS.



**STATE INSPECTED**  
To Cut, Grind & Wrap Meats

**Limestone Village**

**JONES**  
FOOD STORES  
BEULAVILLE

**STORE HOURS**  
8 TILL 7  
6 DAYS A WEEK

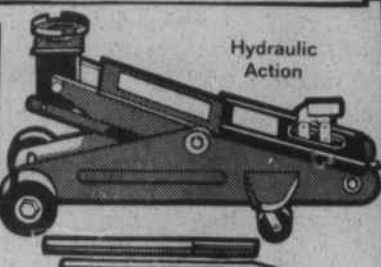
WE RESERVE THE RIGHT TO LIMIT QUANTITY



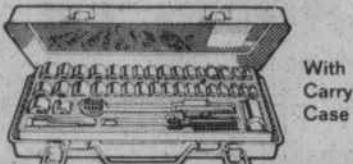
20 in. 3 H.P. Mower  
**119<sup>99</sup>**

- 3 H.P. Briggs & Stratton Engine
- 4-position cut adjustment
- Easy-recoil starter

Rotary Mower is light-weight and easy to handle. 20 in. ultra lift blade. 7x1.50 in. wheels with waffle tread. 93-6000-9



2-Ton Floor Jack  
Lifts 5 to 15 in. 4000 lb. cap  
**52<sup>99</sup>**



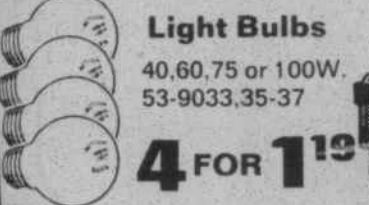
40 pc. Socket Set  
3/8, 1/2 in. SAE, Metric sockets, access. 45-5004-2  
**8<sup>88</sup>**



Champion or AC Plugs  
Standard. Ea. 64-1346-79, 1449-97  
**1<sup>04c</sup>**



Sentry 40 Battery  
300 CCA, Group 24, 65-3119-74  
**41<sup>88</sup>**



Light Bulbs  
40, 60, 75 or 100W. 53-9033, 35-37  
**4 FOR 1<sup>19</sup>**



12 in. Portable B/W TV  
Solid state, White plastic cab. 24-3004-9  
**79<sup>88</sup>**



Single Stage Air Filter  
Asst. sizes. Ea. 74-5951-6006  
**2 for 4<sup>00</sup>**



Fram Oil Filters  
Asst. sizes. For most U.S. cars. 74-5400-08  
**2<sup>99</sup>** Ea.



Sentry Bias-Ply  
**26<sup>97</sup>**

A78-13 Blackwall Plus 1.42 F.E.T. Each. Tough Poly-BD tread rubber compound resists road abrasions.

Tire Size	Blackwall Price*	F.E.T. Ea.
A78-13	26.97	1.42
B78-13	32.00	1.53
E78-14	38.00	1.80
F78-14	40.00	2.01
G78-14	42.00	2.17
H78-14	47.00†	2.39
G78-15	42.00	2.26
H78-15	44.00	2.43
5.60-15	33.00**	1.55
L78-15	49.00†	2.79

\*All Prices Plus F.E.T. Ea. Whitewall only \$3.00 more. †Whitewall only \*\*Blackwall Only



Magnavox 19 in. Videomatic Eye Color TV

Electronic Eye adjusts picture to room light automatically. Solid state. AFT. Black matrix tube. Walnut finish cabinet. 24-4195-4

**449<sup>00</sup>**



Kraco® Your Choice! FM/AM/FM Stereo—8-Track or Cassette

Pushbuttons. For most cars incl. imports. 21-8043-45  
**119<sup>88</sup>**

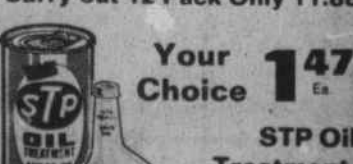


Your Choice—Kraco® 30W Coaxial Speakers  
5 1/4 in. round or 6x9 in. for rear deck. 21-8010, 11  
**29<sup>88</sup>**



Valvoline 10W40 Oil Heavy-duty. All weather. 76-1434-6  
**99<sup>c</sup>** Ea.

Carry-out 12 Pack Only 11.88



Your Choice 147

STP Oil Treatment. 78-1310-8

WD-40 Spray Lube. 78-1378-5

Gumout Carb. Cleaner. 78-6947-2

Gunk "Engine Brite." 78-6944-9

JOHN MORRELL

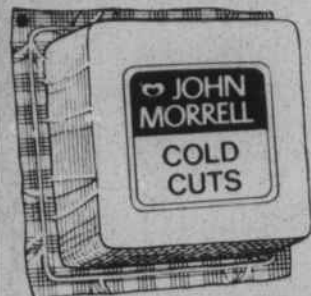
**FRANKS** 12 OZ. **89<sup>c</sup>**



JOHN MORRELL

**BOLOGNA**

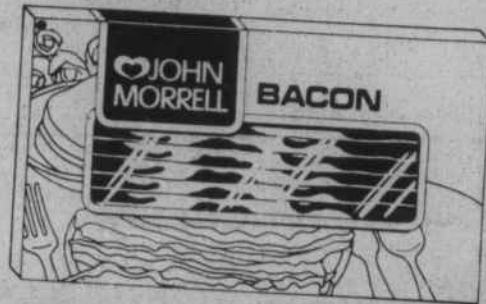
**99<sup>c</sup>** 12 OZ.



JOHN MORRELL

**BACON**

**\$1.19** 12 OZ.



**WHOLE BEEF RIB EYE**



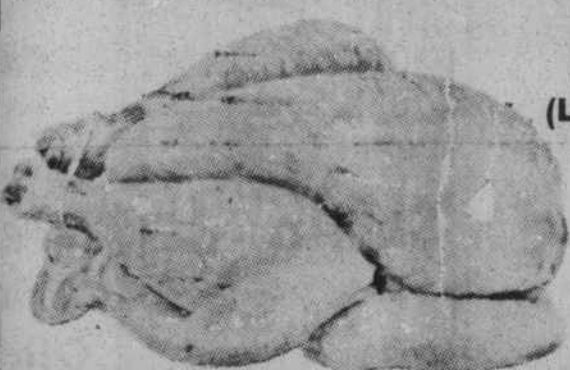
CUT INTO STEAKS FREE

**\$3.39** LB.

2 TO BAG

**FRYERS**

(LIMITED 1 BAG WITH EACH ADDITIONAL \$10.00 FOOD ORDER)



**39<sup>c</sup>** LB.



OLD HICKORY BARBECUE

**\$1.79** LB.



8 OZ. PET WHIP

**TOPPING**

**69<sup>c</sup>**



SKINNER'S ELBOW MACARONI LB. BOX

**2/\$1**



2 LB. BANQUET TURKEY & SALISBURY STEAK DINNERS

**\$1.39**

FRESH **STRAWBERRIES**

**79<sup>c</sup>** PT.



5 LBS. NEW FLORIDA RED POTATOES \$1.19  
PEPPER & CUKES 10<sup>c</sup> EA.  
FLORIDA ORANGES \$1.49 5 LB. BAG

**Baby Ruth**

**BABY RUTH OR BUTTERFINGER**

6 PACK

**99<sup>c</sup>**