

# GENERIC PRODUCTS



303 CAN  
**VEGETABLES 3/99¢**  
 18 OZ. ALL FLAVOR CAKE  
**MIXES EACH 59¢**  
 100 CT.  
**TEA BAGS EACH 89¢**  
 10 OZ. INSTANT  
**COFFEE \$2.79**  
 MACARONI AND CHEESE  
**DINNERS 7½ OZ. 4/51**  
 CHUNK DOG 25-LBS.  
**FOOD \$3.19**  
 32 OZ. DISH  
**DETERGENT 49¢**  
 GAL.  
**BLEACH 59¢**

1-LB. BLUE BONNET  
**MARGARINE**



**49¢**

SWEETHEART LONG LOAVES  
**BREAD 3/\$1.19**  
 HAMBURGER, HOT DOG AND  
 BROWN 'N SERVE  
**ROLLS 2/99¢**



**PINE STATE GAL. MILK**

REGULAR **\$1.83**  
 CHOCOLATE **\$1.69**  
 ½ GAL. **ICE MILK 79¢**  
 ½ GAL. **ICE CREAM \$1.29**

**2 LITER PEPSI, COKE & DR. PEPPER 99¢ EACH**

**RED POTATOES**

5 LB. **99¢**

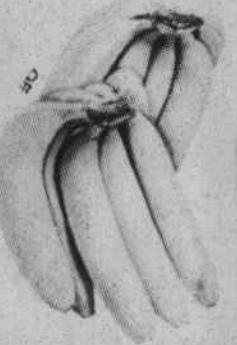
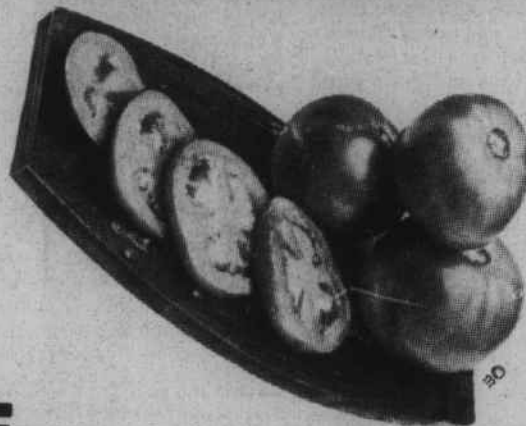


LARGE

**LETTUCE**

HEAD **49¢**

**fresh produce**

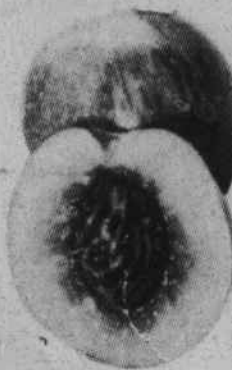


FRESH

**PEACHES 49¢**

GOLDEN RIPE

**BANANAS 3 LBS. \$1**

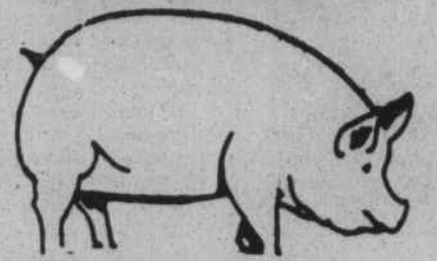


**PENDER SMOKED SAUSAGE**

10-LB. BOX

**\$10.95**

**LITTLE PIG SALE**



**WHOLE PIGS**

**89¢ LB.**

HAMS AND BACKBONE **\$1.09 LB.**  
 SIDES AND SHOULDERS **99¢ LB.**

## WESTERN BEEF SALE!

T-BONE

**STEAK LB. \$2.39**



PORTERHOUSE

**STEAK LB. \$2.49**

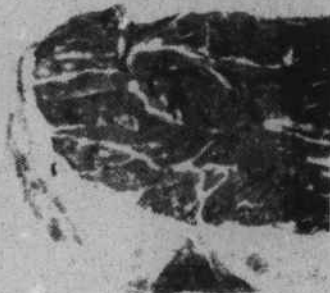
CUBE

**STEAK LB. \$1.99**



ROUND

**STEAK LB. \$1.79**



PURE GROUND

**BEEF LB. 99¢**

RIB

**STEAK LB. \$2.39**

CHUCK

**ROAST LB. \$1.39**

SHOULDER

**ROAST LB. \$1.49**



HOWARD'S HOMEMADE SAUSAGE

10-LB. OR MORE

**\$1.19 LB.**



**FRYERS BY THE BOX**

BOX

**\$34.50**

SPLIT

**\$35.00**

QUARTERS

**\$35.50**

KETA

**SALMON**

16 OZ.

**\$1.49**

# HOWARD'S FOOD CENTER

DRIVE A LITTLE, SAVE A LOT DEEP RUN, N.C.

WE WELCOME FOOD STAMP CUSTOMERS