



# SON OF A GUN

By Joe Lanier

Sometimes you look at a thing but don't see it. It was brought to my attention a few weeks ago that county sheriff's deputies, highway patrolmen and town police cars park on the sidewalk in front of the Sheriff's Department when there are dozens of parking places only a few steps away. Pedestrians have to walk into the road or over by the building to get by because an item that is supposed to be in the road is on the sidewalk, which is supposed to be for those walking. As we discussed the reasons, we came up with a few — and they are: . . . Too lazy to walk across the street. . . Felt they were too important to obey rules set for the general public. . . Car has no backing gear. . . Had a prisoner and someone else already had parked in the driveway to the sallyport. . . (The sallyport, by the way, is an area designed for discharging prisoners from an auto into the jail. It is enclosed so they will not have the chance to run away. . . However, the one at the Duplin Sheriff's Department is usually used just for a parking area). . . And finally, they just don't know better. . . Now, I must admit I haven't asked any of those who park on the grass and sidewalk why they do it, so there may be other reasons, some even valid. . . But, it sure does not give a good appearance for those who are supposed to be upholding the law for us.

Speaking of appearances. . . Some folks over in Chinquapin tell me the county ambulance is used regularly for trips to a snack bar to transport food back to the place where volunteers are studying to be EMTs. It is the county ambulance from Kenansville and not the one stationed at Chinquapin. . . With the county equipment being misused, it makes one wonder about what is being taught in those classes. . . By the way, those in charge of the classes are being paid with tax dollars. . . The volunteers have to put in many an hour of study and training to give their time to the people of Duplin County. . . It just doesn't seem the proper thing to do for a county employee to show such disregard for county equipment. . . I would hope those taking the EMT courses are told the value and importance of these vehicles. . . Not to use them at their discretion. . .

\*\*\*\*\*

Do you remember the "Goat Man"? . . . I suppose the super highways and the meanness along those highways finally caused the old fellow to fade into Never-Never Land. . . As a youngster, it was a treat to hear the Goat Man was coming. This fellow wandered about the country with several goats, pulling a cart with all his belongings on it, and every two or three years he would come through Duplin County. It was said you could smell him before you saw him. He had tales of wonderment to a young child. . . I now see his tales were made up, but they were goggle-eyed, mouth-drooping at the time. . .

\*\*\*\*\*

"It ain't over till the fat lady sings." . . . After the recent tornado, some people in Sampson County were out observing the damages to their farm. . . Several of the livestock animals were killed. . . All the goats but two were killed. . . An old truck had been rolled over several times by the winds, but landed back on its wheels. . . As they stood there looking over the situation the next day and thinking, I guess, it could have been worse, the truck just cranked itself up with no one near it. . . But, it cranked up and ran over killing the two goats left by the storm. . . Son-of-a-Gun. . .

*Invitations are so important.*

*See our large selection of sample invitations and response cards.*

*We will be more than happy to help you with your special wording.*

Duplin Times

296-0239

*The Best Way to Remember... a Portrait Package!*



**14** BEAUTIFUL COLOR PORTRAITS **\$9.95** PLUS 95¢ DEPOSIT PER SUBJECT

TWO 8x10's  
TWO 5x7's  
TEN Wallets

REGAL STUDIOS LIMIT ONE PACKAGE PER CHILD, PLEASE.

THESE DAYS ONLY:

**Friday & Saturday**  
**May 18 & 19**  
**11 to 7**

**SUPER DOLLAR**

Corner Stanford & Jackson St.  
Beulaville

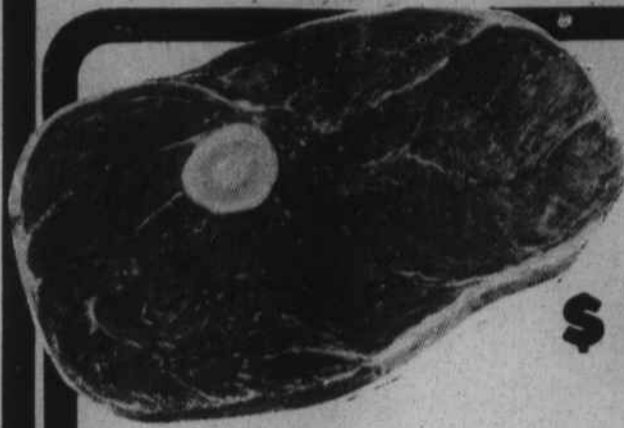
**STATE INSPECTED**

To Cut, Grind & Wrap Meats



**STORE HOURS**  
**8 TILL 7**  
**6 DAYS A WEEK**

WE RESERVE THE RIGHT TO LIMIT QUANTITY



**ROUND STEAK**

**\$1.58** LB.

**BONELESS ROUND STEAK \$1.79** LB.

**BONELESS CUBE STEAK \$1.89** LB.

**GROUND ROUND \$1.69** LB.  
3 LBS. OR MORE



**COCA-COLA, TAB & MELLO YELLO**

2 LITER

**99¢**

**OLD HICKORY BARBEQUE**



**\$1.66** LB. 12 OZ.

**SWIFT BACON 99¢**

**SWIFT FRANKS 99¢**  
12 OZ.

**TREESWEET FROZEN ORANGE JUICE**

12 OZ. **89¢**

**PET WHIPPED TOPPING 8 OZ. 69¢**

**COMET RICE 28 OZ. BOX 69¢**

**FARM FRESH CHEESE 12 OZ. SINGLE WRAP \$1.29**

**MERICO BUTTER-ME-NOT BISCUITS 5 OZ. 5/1**

**CHATHAM CHUNX DOG FOOD \$6.89** 50-LB. BAG

**NORTHERN TOILET TISSUE 4-ROLL PKG 99¢**

**PUNCH DETERGENT 99¢** GT. SIZE

**DAWN DISH DETERGENT 99¢** GT. SIZE

**JAMBOREE STRAWBERRY JAM 2 LB. JAR \$1.29**



**FRYERS & MIXED PARTS**

**THIGHS & DRUMSTICKS 77¢** LB.

**58¢** LB.



**CREAM FLOUR**

**79¢**

5 LB. BAG



**BANANAS**

**29¢** LB.



FRESH

**SQUASH**

**49¢** LB.

**LOCAL COLLARDS 49¢** LB.



**COBLE ICE CREAM 5 QUART**

**\$3.29**

**COBLE MOO BARS**

12 PAK **99¢**