



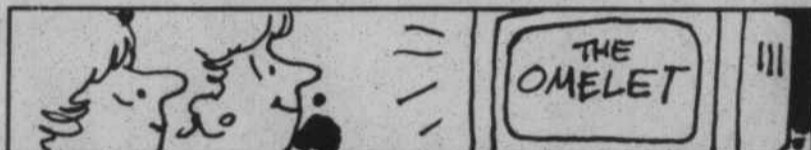
SON OF A GUN

by Joe Lanier

James Sprunt Technical College is in the process of going through all the requirements to build a new building on its campus, and at the same time it is going through the requirements to become a "community college." My education, though thorough, apparently was not deep enough. I assume the lack of depth in my education is the reason I do not quite understand the two. The unemployment rate in Duplin County is one of the highest of the area. Thus it would appear to me the best thing the college could do would be to build a building to train Duplin people in some job skills. The proposed Student Center Building has a floor space of over 11,000 square feet and over two-thirds of its area is to be used by students relaxing, "hanging around." It would seem to me the people of Duplin County would be better served if a trades or job training building were to be constructed. I am proud to see the college expand. I just think they may be a bit over-educated and have their priorities mixed up. . . But then, I always vote for basics first and niceties second or last. . .

Do you know Grant Turner? . . . His voice, I am sure, you would recognize. He has been announcing the stars as they come on stage and reading the advertisements at the Grand Ole Op'ry for so long his voice is synonymous with the Op'ry. Few folks know what he looks like, but most everyone recognizes his voice. Recently Mr. Turner sent some good words this way. . . Here is what he had to say. . . "The creator of all things bright and beautiful must have shaped North Carolina as he would his own home. He gave it blue, hazy mountains and rich forests, beautiful rolling land stretching to a sea-board of mountainous waves and windswept islands. And then he peopled it with gentle souls who have music in their speech. From such a land comes Charlie Albertson, who sings for you. Charlie's capacity to make friends where ever he goes helps single him out as a very special person. He has appeared several times on the Grand Ole Op'ry and has been liked by both fans in front of the footlights, and stars backstage. He comes from a farming community in eastern North Carolina, a place called Beulaville. I forget a lot of hometowns of the stars, but not that place. I tell Charlie I remember it from singing about "Beulaland" from the church hymnal. He started playing guitar when he was eleven years old, taking lessons from a blind lady. We've had a lot of good records from Charlie. I've played 'em all just like I'm playing this album. He's been on labels like Stop, Mega, Little Darling, Calvary and Hilltop, where he is backed up by members of our Grand Old Op'ry Staff Band. He has written songs that have been recorded by Justin Tubb, Charlie Louvin and David Houston. He has been with me on my warm-up show on the Op'ry stage, as well as the Op'ry itself; on the Wilburn Bros. TV show, the Ernest Tubb Midnight Jamboree (over WSM) and the Ralph Emery Show. And besides all this, he has done a number of tours for the Armed Forces Professional Entertainment office in Washington, D.C., having appeared in 26 countries. I am proud of Charlie Albertson and the way he sings his songs, and I know his wife, Grace, and his son and daughter are proud, too. So let's you and I amuse ourselves and drink deep of all the good things Charlie put into his album. Charlie, you've got a real success here to add to your other country and gospel albums. Good luck from your friends at the Op'ry, the D.J.s, and your friends everywhere. (Signed) Grant Turner."

As you might have guessed, this came from the back of Charlie Albertson's new record album, "Honky Tonk Moon." The album is filled with good country songs and Charlie is backed up with the elite of country music makers. . . These music makers' names appear on the back of records by the super stars. . . Johnny Gimble, Jimmy Capps, Jerry Whitehurst, Buddy Harman — just to mention a few. If you are looking for a Christmas present for a country music fan, Charlie's new album would be a winner. Charlie has been making good country music for many years in Duplin. He has the talent and the confidence, and one day he will get that break and shoot to the top of the charts. . . But, Charlie will always be a country boy from Duplin. I don't think stardom would change him. . . Son-of-a-Gun. . .



The first television cook was Marcel Boulestin who demonstrated how to cook an omelet on English TV in 1937.

SPECIAL ANNOUNCEMENT
NEW HOURS
VERNON PARK MALL
 Kinston
OPEN SUNDAYS...
 Through Christmas
1 - 6 PM

The "If we sold it for less we'd be giving it away" sale on Armstrong floors.

Amazing savings on a selected group of easy-care no-wax flooring.

Now you can bring the long-lasting quality of an Armstrong floor into your home — at a price that won't last long! Select from a beautiful assortment on sale. But hurry in soon before we change our minds.



- DIRECT FROM THE MILL PRICES
 - WE CARRY OUR OWN ACCOUNTS
 - NO WAITING
 - OVER 300 ROLLS OF VINYL IN STOCK
 - LOWEST PRICES
 - OUR OWN PROFESSIONAL INSTALLATION
- WE'RE BIGGER THAN WE LOOK, DISPLAYING 28,000 SQ. FT. OF FURNITURE & CARPET IN A 14,000 SQ. FT. STORE

FREDERICK FURNITURE COMPANY
 Hwy 117-Rose Hill Phone: 789-3448

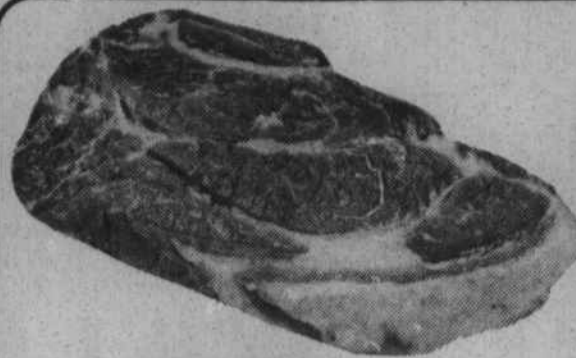
STATE INSPECTED

To Cut, Grind & Wrap Meats



STORE HOURS
 8 TILL 7
 6 DAYS A WEEK

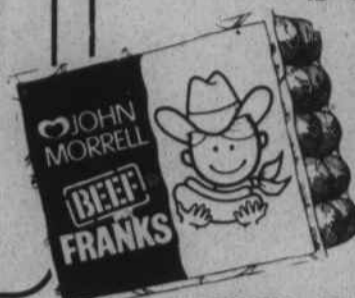
WE RESERVE THE RIGHT TO LIMIT QUANTITY



BONELESS CHUCK ROAST
\$1.38 LB.

BEALE'S COUNTRY HAMS
 12 - 14 LBS. WHOLE
\$1.49 LB.

JOHN MORRELL FRANKS
 12 OZ.



89c



FRYERS
47c LB. WHOLE
BONELESS SHOULDER ROAST
\$1.59 LB.



BONELESS STEW BEEF
\$1.79 LB.
 GROUND CHUCK **\$1.69** LB.

JOHN MORRELL BACON
 12 OZ. **\$1.19**

JOHN MORRELL BOLOGNA
 12 OZ. **99c**

1/2 GAL.
CITRUS HILL ORANGE JUICE
\$1.29

COCA-COLA TAB & MELLO YELLO
 2 LITER **99c**

QUAKER QUICK GRITS
 LB. BOX **39c**

Pillsbury Plus
CAKE MIX
69c

Lipton
INSTANT TEA
 4 OZ. **\$3.29**

Chatham
DOG FOOD
 50 LBS. **\$6.89**

Shawnee's
FLOUR
 5 LB. BAG **89c**

FRENCH FRIES
 2 LB. BAG **59c**

MR. P'S FROZEN PIZZAS
59c

CLOROX
 GALLON **89c**

COMET RICE
 28 OZ. **69c**

KRAFT SINGLE WRAP CHEESE
 12 OZ. **\$1.59**

Fab
DETERGENT
 GT. SIZE **\$1.69**

PALMOLIVE
LIQUID DETERGENT
 GIANT SIZE **99c**

LETTUCE
 39c HEAD
RUTABAGAS 15c LB.
FLORIDA ORANGES 1.59
 5 LB. BAG