

POLK COUNTY NEWS

C. BUSH, Publisher

Published every Friday at
Tryon, North Carolina
Office Phone, 99; Residence, 45

Entered as second-class matter April 28 1915 at the post office at Tryon, North Carolina under act of March 3, 1879.

Foreign Advertising Representative
THE AMERICAN PRESS ASSOCIATION

SUBSCRIPTION \$2.00 PER YEAR

Annual Meeting Lanier Club

The annual meeting of the Lanier Club was held on Thursday April 14. After the regular business was disposed of the committee and officers reported as follows: Program committee, Mrs. Bacon chairman. In the absence of the chairman, Miss Anna Beach read the following report from her:

"Your committee has to report having provided program for each meeting of the club year. We wish to acknowledge the generous cooperation of the music committee. Through the courtesy of Miss Avant (who kindly typed the posters) we were able to give each meeting full publicity in hotels, boarding houses and tea rooms.

Respectfully submitted. An urgent request was made at the beginning of the year for more music at our club meetings and the music committee has made an effort to meet this appeal.

We appreciate the generous response of our guests and musicians of Tryon who has assisted us, and are especially grateful to Mrs. Ernest Missildine for her ready response to numerous appeals for accompaniments as well as piano solo. Among those who have furnished us with music are Misses Mary Lindsey, Martha Jackson, Berlyn Unwin, Pratt, Mesdames Holverschild, Wing, Bailey, Messrs. Weigel, Carver, Locke, and our own Doublday Orchestra assisted by Mr. Edwin Lindsey and the Messrs. John, David and Sterling Lanier.

R. P. WILCOX, Chrm. of music committee.

Library Committee, Miss Oliver, Chairman.

Balance in Treas. Apr. 1920	\$15.62
Rec. sale of cards and fines	93.84
Paid Club Treas., Mrs. Orr	45.00
Put in book fund	33.00
Balance from cards and fines	15.84
Expenditures	
Thousand Library cards	10.00
Labels for books	1.50
Materials for repairing books	2.69
Total expenditures	14.19
Bal. in Library purse	1.65
NOTE:—Expenditures required have been rather more than usual, new library cards, labels and bandages for injured books all being needed during this season.	
Receipts in book fund	\$33.00
Int. on Mrs. Wright's gift	9.00
Total	42.00
Expenditures for books	35.00
Balance in book fund	6.93

Remarks:—Books cost more than they used those works of fiction for which we formerly paid \$1.50 are now \$2.00 while more solid literature rises proportionately in price. In response to a demand for a reference book of contemporary

writers we purchased "Who's Who" for the Library at \$6.50 and a valuable Year Book for 1920 for \$6.00. The number of books purchased in all being twenty-three, mostly fiction, to meet the demand. In this connection I wish to ask for suggestions for the coming year to be handed in to the Library committee. The magazine table has been supplied by kind friends and members with the "Literary Digest" and "Outlook", with occasional contributions of current magazines and the "Atlantic" comes as a regular subscription gift each month. The chairs placed near the table are usually occupied by readers enjoying the quiet and opportunity, and I have often felt the wish that we might more fully supply the need of readers, but we are grateful for what we have and take this occasion to thank the donors to the table. Especially do I wish to express the thanks of the Library for the books given during the year, 172 in all, all acceptable.

Civic committee, Mrs. M. O. Kelley chairman. Owing to the activities of the Boy Scouts this committee has been able to use the time, energy and money at their disposal on the club property. The building has been stained and painted and roof repaired. The grounds have been beautified by planting many shrubs purchased from the Baltimore Nursires, Rhododendrum, Irish Juniper, Red Bud and spirea among the number. Also shrubs and plants given by Mrs. Speed and Mrs. Hester. Trees interfering with the growth of better specimens have been taken out and dead branches trimmed. We wish to remind our club members aided, that it is owing to Miss Purdy, her assistants and friends who so able aided the Exchange last year that we have had the wherewithal to make these repairs and beautify the Club grounds.

Social committee, Mrs. Bowne chairman. The social committee provided hostess for all the meetings held during the year.

House committee. The house committee attended to keeping the interior of the building and the furniture clean and in good order.

Report of Treasurer, Mrs. Orr, April 22, 1920 to April 14, 1921.

Receipts	
Balance on hand	\$243.22
Membership fees	162.00
Library	45.00
Rental, library and chairs	33.00
Vacuum cleaner	7.25
Piano	25.50
Gifts for piano	33.00
Gifts for Armenian relief	35.00
Mountain Industries teas, per Mrs. Stone	18.25
Interest on bonds	8.50
Rotal receipts	609.72
Expenditures	
Librarian	\$150.00
Janitor and cleaning	56.60
Electric service	19.90
Water Co	16.20
Books	9.00
Fuel	35.38
Federation	4.00
Insurance	4.50
Armenian Relief	35.00
Mrs. Hook, legislative work	5.00
Traveling Expenses of speakers	14.25
Balance on piano	57.00
Note at Bank	64.84
Laundry	1.50

Expense of House Committee	4.85
Tuning Piano	5.00
Stationery, stamps etc.	125.65
Balance	609.72
Report of Fund for Building and Grounds	
Receipts	
On hand March 29	\$209.23
Interest	8.51
Gift	2.00
	\$220.44
Disbursements	
Labor	\$26.25
To Baltimore Nursery	36.60
Painting	39.00
Paints oils etc.	52.10
	66.49
Balance	\$220.44

Owing to the lack of space two reports are omitted. Ed.

E. E. MISSILDINE
President

J. A. STEELMAN
Vice Pres.

Peoples Building & Loan Assn.

Chartered and Supervised by the State of North Carolina

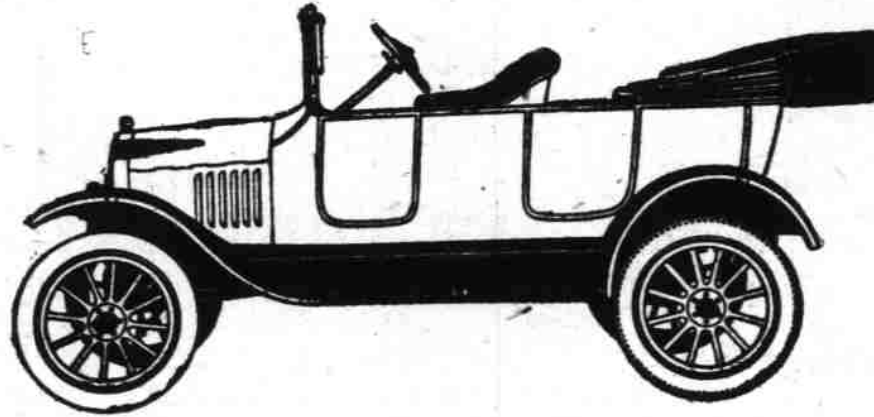
\$100 share 25c A week.
Second Series now open. For full information call on

W. F. LITTLE, Secretary-Treasurer.

Thirst Fatal in a Week. The average man will die for want of water in five minutes, for want of sleep in ten days.

Modern Deluge. The biggest yearly rainfall is in Assam. In 1861 the world's record was broken there by a fall of 805 inches, or more than 67 feet of rain.

Ford
THE UNIVERSAL CAR



\$4.40 F. O. B. Detroit

With Spring comes the Rush Season for Ford Cars

Each year thousands have been compelled to wait for their cars after placing their orders. Sometimes they have waited many months.

By placing your order now, you will be protecting yourself against delay. You will be able to get reasonably prompt delivery on your Ford car. And you will have it to enjoy when you want it most—this spring.

Don't put off placing your order.

Ballenger-Morris Motor Co.
TRYON, N. C.

More Price Reductions by Harvester Company

Entire Line of Implements Now at LOWER PRICES

In view of the recent reduction in the price of steel, we now announce lower prices for our entire line of farm machines and implements not covered by reductions previously announced.

All lower prices take effect at once

The reduction in the price of steel comes after all the material for the machines and implements we will sell this year has been provided, and will therefore have no bearing on the manufacturing costs of such machines. However, it does enable the Company to buy materials at lower prices for future manufacture, and in accordance with our announced policy we now quote those prices, the Company taking the loss on machines already finished and materials on hand.

Full information regarding our lower prices on binders, mowers, and all other harvesting, haying and corn machines, tillage implements, tractors, engines, and all other I H C farm machines can be obtained from any International Dealer.

INTERNATIONAL HARVESTER COMPANY

CHICAGO OF AMERICA USA

92 Branch Houses and 15,000 Dealers in the United States

NOTICE OF SALE

Pursuant to and by virtue of power of Sale contained in that certain mortgage deed executed by Miles Jackson and Annie Jackson, his wife, to A. L. Hill on the 29th day of October 1918, to secure a debt of \$275.00, and interest, which said mortgage is of record in office of Register of deeds for Polk County in book of Mortgages No. 9 at page 48, default having been made in the payment of said debt and interest, the undersigned will sell at public auction, to the highest bidder, for cash, at the Court House door of Polk County, in Columbus, N. C. on the 9th day of May 1921 at 10:30 o'clock A. M. the following described tract of land conveyed by said mortgage, to wit:

Situate in Tryon Township, Polk County, beginning at a stone, the Southwest corner of Dora Foster property, and running thence with Dora Foster's line South 86 degrees East eight chains to a stone, Dora Foster's corner; thence South 45 degrees West four and seventy four hundredths (4.74) chains to a pine stump; thence South 82 degrees West four and fifty four hundredths (4.54) chains to a stake in Geo. A. Smith's line; thence with his line North 6 degrees West six and twenty five hundredths (6.25) chains to the place of beginning, containing three acres, more or less, being part of land conveyed to B. C. Livingston by deed from W. A. Hipp and wife in August 1908. Being same land described in deed from Wm. Covil and wife to Miles Jackson and wife, Annie Jackson, and recorded in Book page 25 records of Polk County, to satisfy the debt and interest provided in said mortgage.

This 6th day of April 1921
A. L. HILL, Mortgagee,
E. A. EMBURY, owner of debt.

By WALTER JONES, Attorney.

NOTICE OF SALE

North Carolina, In the Superior Court,
Polk County, Before the Clerk,
A. J. Ballard

vs.
Parolee Ballard, Mingus Ballard, John Ballard, Tom Ballard, Jack Ballard, Taylor Ballard, Reuben Ballard, Jesse Ballard, Cynthia Ballard, Mintie Ballard; Nonie Ballard Nora Ballard, Lyda Ballard Alex Deal, Ephraim Deal, Mintie Foster, Margaret Birmingham, Carletha Ballard and Dean Ballard.

Under and by virtue of an order of the Clerk of the Superior Court made in the above entitled Proceeding on the 1st day of April 1921 whereby the undersigned was appointed Commissioner of the Court to sell thereafter described lands for partition, the undersigned Commissioner will sell at public auction to the highest bidder, for cash, at the Court House door of Polk County, in Columbus, N. C. on the 9th day of May 1921 at 10:30 o'clock A. M. the following described tract or parcel of land, lying being and situate in the Town of Saluda, County of Polk and State of North Carolina and bounded and described as follows, to wit:

Beginning on a stake, Hall's corner; on road, and running thence with road N. 62 W. 12 poles and 10 links to a stone, J. L. Hart's corner; thence with Hart's line N. 21 E. 14 poles and 15 links to a stake, McKee's, Hamer's and Hart's corner; thence S. 66 E. 10 poles and 15 links to a stake in McKee's line, Bale Pace's corner; thence with his line S. 33 W. 10 poles and 11 links to a stake, his corner; thence with his line S. 65 E. 3 poles and 22 links to a stake Hall's corner; thence with Hall's line S. 22 W. 7 poles and 15 links to the beginning, containing 148 square rods, more or less.

This April 5th 1921.
WALTER JONES,
Commissioner.

NOTICE OF MORTGAGE SALE

Whereas on the 7th day of April 1920, William Pack and Saphrony Pack, his wife executed to E. W. Dedmond, C. E. Shore and J. A. Steelman undersigned mortgagee that mortgage which is of record in book 17 at page 38 of the records of mortgages for Polk County, to secure an indebtedness of \$400 evidenced by notes referred to in said mortgage, and default having been made in the payment of said indebtedness, and the whole amount thereof being now due under the terms of said mortgage.

Therefore by virtue of the power of sale contained in said mortgage, the undersigned will on

MONDAY MAY 16, 1921

at 1:00 o'clock P. M., at the court house door of Polk county in Columbus, North Carolina, offer for sale to the highest bidder for cash, the lands conveyed by said mortgage which are bounded and described as follows: Situate in the township of White Oak, county of Polk and State of North Carolina, adjoining the lands of Grayson Arledge, J. M. Lewis and B. T. Price and bounded as follows:

Beginning at and stone and pointers at place of red oak corner (gone) J. M. Lewis and Grayson Arledge's corner, and running with Lewis N. 8 E. 63 1-5 poles to a stone and pointers on the speculation line thence; N. 86 W. 88 poles to a stone on the east bank of a small branch, thence; with the branch as follows: S. 37 W. 18 poles, S. 10 W. 12 poles, S. 5 W. 8 poles, S. 32 W. 4 1-4 poles to a poplar near the head of the said branch, thence; S. 21 1-2 W. 20 poles to a chestnut, thence; S. 59 E. 20 2-3 poles to a pine, thence, S. 76 1-2 E. 12 3-4 to a pine on the west edge of the Allen road thence; with the said road and Grayson Arledge's line as follows: N. 47 E. 20 1-2 poles E. 17 poles S. 74 E. 24 poles S. 63 E. 12 poles, S. 73 E. 7 poles to a stake on edge of said Allen road thence; N. 11 E. 3 1-5 poles to the beginning, containing 38 acres.

Tract No. 2. On the waters of Thompson's spring branch, and bounded as follows: beginning on a dead white oak on Garrett's corner, and running with his line S. 80 W. 48 poles to a white oak, his corner, thence with his line S. 10 W. 60 poles to a black gum, his corner, thence with several of Garrett's lines of 40 acre survey N. 78 1-2 W. 13 poles to a dogwood, S. 60 W. 13 poles to a Spanish oak on top of a ridge; thence N. 87 W. 32 poles to two blackjack bushes on top of a ridge; thence N. 56 1-2 W. 15 poles to a stake and pointers in Garrett's line; thence N. 80 poles to a pine and pointers; thence N. 60 E. 24 poles to a black oak (down) Whiteside's corner; thence with his line and passing his corner E. 72 poles to a stake; thence to the beginning; containing 42 acres.

This 15th day of April, 1921.
E. W. Dedmond
C. E. Shore
J. A. Steelman
Mortgagees

E. W. Dedmond, Assignee

Lumber

All kinds of Building Materials and Feeds at right prices can be had by calling on us.

Hearon Lumber Co.
Saluda, N. C.

Emerson Amended.
If a man does anything well, the world will beat a path to his door—unless he happens to be expert in raising skunks.—Boston anscript

Let Uncle Sam Bring Your Deposits to Us.

An out of Town man whom we had never met called recently to tell us how well pleased he was with our banking-by-mail service. He has been depositing with us regularly for several months, and said he found it very convenient to do business with us, even though he had never been able to call in person.

We have many customers who bank by mail. They find our service safe, simple and efficient. You'll like it, too, if it is not convenient for you to transact your banking with us in person. Ask us to explain the details. We'll gladly do so.

We solicit and are prepared to take care of your Checking Account, Saving account and your COLLECTIONS. If you have notes to collect we shall be glad to assist you free of charge. We have a large safe for the protection of your deeds, notes and all valuable papers. This is FREE. Use it.

Polk County Bank & Trust Company

E. W. S. COBB, President
FRANK JACKSON, Vice President
FRED W. BLANTON, Vice Pres & Cash.
M. L. ARLEDGE, Asst. Cashier.

Columbus, N. C.

IT IS A GOOD PLAN TO KNOW WHAT YOU SPEND FROM MONTH TO MONTH

A Checking Account will give you this information to the last cent. We keep a record for you. No man ever tried transacting business through a bank and regretted it.

CALL TODAY

THE CAROLINA STATE BANK

David C. Barrow Pres.
Q. C. Sonner Vice Pres.
H. B. Lane Cashier.
Louise Lane asst. Cashier.
W. C. Robertson Vice Pres.