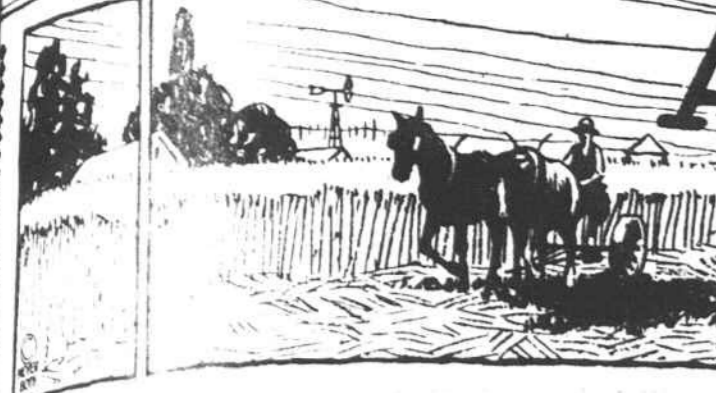
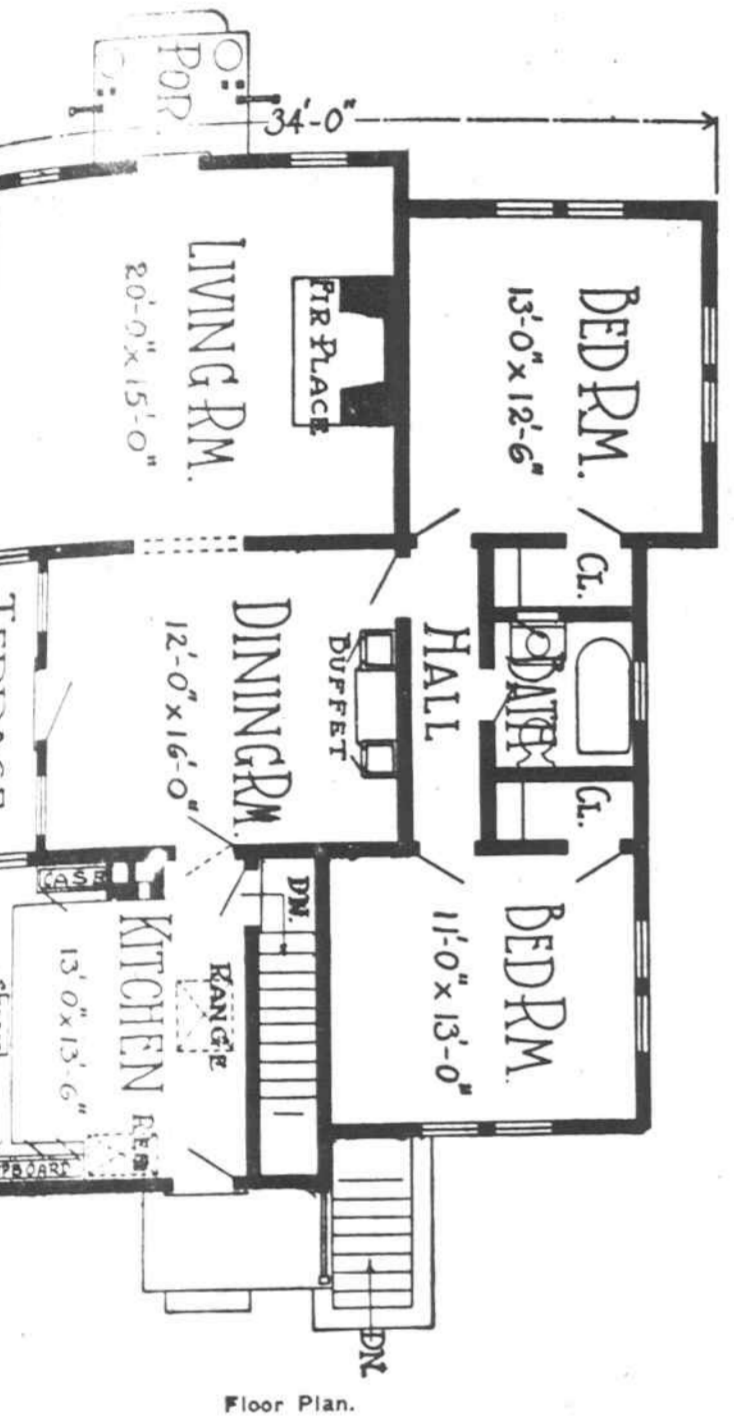


AGRICULTURAL NEWS



Low Ideal Design for Small, Single Family Home



WILLIAM A. RADFORD... From the hall one reaches the two bedrooms and the bathroom which is placed just between them.

Kitchen Sink Aids Important Features

Kitchen sink accessories are important features to consider when planning a home.

Wood Exteriors

Frame or wood exteriors are usually of two kinds. The first is that in which wide siding and similar forms of lumber are employed to give the characteristic exterior finish most common in frame houses.

Creeping of Varnish

The creeping of varnish is caused by the under coat being softer than the subsequent coat. It may be brought about by dampness in the wood occasioned by an unnoticed leak.

The best preventive of creeping is to see that each coat of varnish is thoroughly dry and hard before another coat is applied.

OF INTEREST TO POLK COUNTY FARMERS

Dope Gathered Here and There Which Has a Local Angle that Makes It Worth the Progressive Farmers Attention

Edited By "A Dirt Farmer"

TO POLK COUNTY FARMERS
Through the winter and until now, we have been arranging and marshaling our forces to make another crop to feed ourselves and our brothers and cousins in the towns and cities; but the time is here now for action. The dogwood blossoms are speaking in thunder tones that corn and cotton planting time was at hand. We must also remember that we have only a few days in which to grow these and all other crops. We have had fine weather for preparing the land. Fertilizers must be bought and applied, intelligence should accompany our every action. We should cooperate with each other to the limit. Some farms have more labor than horse power, while others have more horse power than labor. Let such farmers exchange and make it easier for each. Also in the selection of seed. Let every one do his level best to procure the best seed possible and then give the best and most intelligent cultivation and results will be forth coming when the harvest time comes. And last but not least, by all means plant on every

farm large and small everything that will be needed to feed the family and all livestock on the farm for the coming year and then plant all the cotton you can properly cultivate and pick out his fall and see what a prosperous year we will have next and succeeding years. For the family's sake, for the lands sake, for your own sake, please do quit buying hay. Ask John Williams where he gets his hay since 1905.

Respectfully,
J. R. Sams, County Agt.

No Waste of Ivory

Not a scrap of ivory is ever wasted. Billiard balls are collected and made up into handles, small models and decorative objects. Thousands of quantities of these are exported and sold in India. In addition cuttings and shavings are used for inlaid, polishing, and making medicine.

Middle Age Defined

Middle age may perhaps be defined as that period in life when you're going to feel just as well as you ever did in a day or two.—Ohio State Journal.

Milk Easily Delivered

The milkman at Nome, Alaska does not worry about spilling his milk. He calls from house to house and delivers a block of frozen reindeer milk or cream equal to a pint of a quart. A white cord frozen into the block of milk serves as a handle to facilitate delivering. The blocks of milk and cream are wrapped in oil paper and look like ice cream. As long as it remains frozen there is no deterioration in the quantity or quality.



At the close of a busy day. Photo Copyright, Underwood & Underwood, N. Y.

Conditioning the Farm Horse

Thousands of farm horses have been idle or roughing it during the winter months and are not ready for hard, steady work. It is now the season when the program of many a farm horse is suddenly changed without the preparation that is necessary for efficient service.
On many farms the horses have obtained their winter feed from stalk fields and the straw stack. They come through in a thin condition and need to be put in better flesh before ready for hard work. This is best done by gradually giving the horses in advance a portion of the same ration that is to be fed during the work season.
Whether the horse has been out in the open or standing idly in the barn, a moderate amount of light work preceding the rush season is advisable. The hardening process may be accomplished by changing horses each half day in doing the necessary hauling about the farm preparatory to working in the fields. This will exercise and strengthen the muscles without tiring them.
The horse will not perform efficiently in an ill-fitting harness. The raw sores that develop are due, in most instances, to plunging an idle horse suddenly into heavy work or to the fact that the harness is not properly adjusted. It is especially important that the horse collar be of the right kind, shape and size. A well-fitted collar does not choke and distributes the draft over the entire shoulder.
During the winter months most farm horses are groomed very little and the long hair of the winter coats is a handicap when spring comes. It is best to remove the old hair at once, by clipping. This is important as it increases the efficiency of the horse. It prevents the extreme sweating and lathering that would otherwise take place as the heavy work goes on and the weather becomes warm.
Due to the fact that the direct farm income is mainly from cattle, horses, or sheep, the care of the farm horse and mule is generally neglected. It should be remembered that the income from the other classes of live stock depends upon the crops that the farm produces; and the horse furnishes the power that makes farm operations possible. More care for the work horse will in the end effect a saving and increase the efficiency on many farms. Be fair to the horse, by doing the things that will give him a good chance to give his best during the present season.

Drop Stitch Crocheted Sweater



Smartly dressed women at Palm Beach and the other popular resorts in the United States and Europe, where the spring and summer styles first appear, are wearing the most attractive hand-knitted or crocheted sweaters of light yarns. Pastels, blues, brilliant tones, simple lines and stitches are the predominating notes of the new styles. The sweater shown above is of contrasting colors and is very easy to make. It requires little time and material. Directions for making may be had by sending a stamped, self-addressed envelope to this paper.

The BULL'S EYE

Editor and General Manager WILL ROGERS



Another 'Bull' Durham advertisement by Will Rogers, Zigfield Folliott and screen star, and leading American Humorist. More coming. Watch for them.

NEW YORK is building some more of those subways under the ground. No use building any more, people can't find their way out of the ones they got now. There's people down underground in New York that haven't been up for years. New York people are just like a lot of Gophers; every time they see a hole in the ground they grab a nickel and duck for it. If they keep on living underground, in two more generations their children will have fur like a rat.

What's this Subway got to do with 'Bull' Durham?
Nothing.

What do people outside New York care about how New Yorkers live?
Nothing.

But there is an old saying that one half the world don't know how the other half live, so I am telling you how they live, not as an Ad but as a fact. Five million Ground Hogs in New York rush through life missing one Train and being shoved into the next. The real trouble is that they can't smoke 'Bull' Durham down there.

Will Rogers
P. S. I'm going to write some more pieces that will appear in this paper. Keep looking for them.

SIXTY-FIVE YEARS AGO!
In 1860 a blend of tobacco was born—"Bull" Durham. On quality alone it has won recognition wherever tobacco is known. It still offers the public this—more flavor, more enjoyment and a lot more money left at the end of a week's smoking.

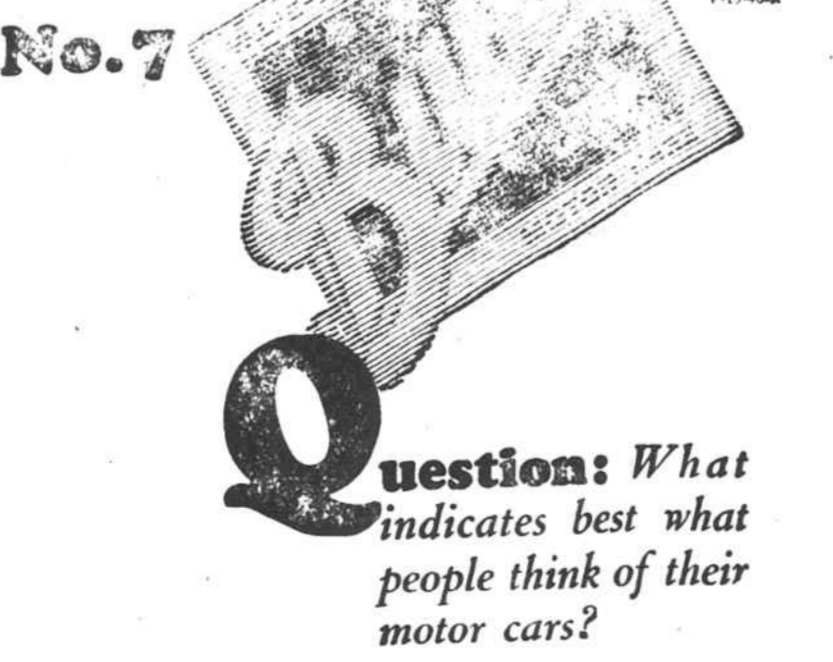
TWO BAGS for 15 cents
100 cigarettes for 15 cents



'BULL' DURHAM

Guaranteed by
The American Tobacco Co.
INCORPORATED
111 Fifth Avenue, New York City

When Better Automobiles Are Built, Buick Will Build Them



Question: What indicates best what people think of their motor cars?

Answer: Whether they buy another of the same make when they come to buy a new one. More than 75% of the Buicks built each year are purchased by former Buick owners.

Forest City Motor Co.,
FOREST CITY, N. C.

When better automobiles are built, Buick will build them

BULL Jersey Bull at Your Service

Cash \$1.50 at Birth \$2.00
GORDON GIBBS, Mills Springs, N. C.



VETERINARY HOSPITAL

M. M. Clarvoe, D. V. M.
7th Ave. East, Hendersonville, N. C.
Res. Phone 254-W. Office Phone 52-J

New Performance little short of amazing!

As soon as you take the wheel of this 1925 Oldsmobile Six—you feel its amazingly new performance!
The way it gets away—its new liveliness—its silent speed on the open road—its dexterity in traffic and in parking—all resulting from the recent improvements built into this car by General Motors and Oldsmobile!
Come in and drive this wonderfully improved Six!

Touring \$890
Coach \$1075
plus tax

G. R. LITTLE, Agent
Saluda, N. C.

OLDSMOBILE Six

PRODUCT OF GENERAL MOTORS