

Saluda A Fast Growing Summer Resort --- Building Rapidly



TOWN GROWING BY LEAPS AND BOUNDS

Saluda is situated on the western side of the Appalachian highlands. It has the most beautiful views and pictures short walking distance. It is furnished by several bus lines and good meat markets, and a merchantile saluda all that is desired of a first class resort town. Saluda has two infant sanatoriums, that are known all over the nation for the wonderful work they have done.

Great City Improvements

Improvements that have been made for the town of Saluda, will eclipse probably many towns its size. It has a wonderful water supply, an extra bond issue for the extension of this present supply in now on foot. Paved side walks, good streets, which are now in the process of improvements, a good electric light system, four good churches with a tremendous membership, a town library and social hall, and a graded and high school that is second to none for a town its size.

Bracing Air and Cool Nights Make Saluda Great

The bracing atmosphere and the cool nights make this town extremely popular with tourists in the summer time, ordinarily they have few mosquitoes, and very few flies. Thousands of visitors have been making this town summer headquarters for many years, and the summer colonies are increasing steadily in numbers every season. Saluda is located at the head of the steepest railroad grade east of the Rocky Mountains. Several passenger trains daily make the train schedule excellent, and trips to important nearby towns are very accessible.

Good Farming Section

Saluda is located near a prosperous farming section, trucking and fruits is a big business in that locality, and hundred of dollars are derived from these sources every season. Very few sections can boast of such apple section as is located in and around Saluda, they have some of the best and largest orchards in the state.

Saluda, N. C. is to have a big towel mill in the near future.

Bank of Saluda Popular

The Bank of Saluda, is one of Saluda's Progressive institutions, which has shown remarkable gains since the bank was organized. Its officers and board of directors have the confidence of the entire populace, hence their remarkable success in the banking business. This institution is always ready to play their part in the march of progress that has been so noticeable in the town of Saluda, and are always on the alert to offer their services for the general welfare of the city.

Efficient Officers and Directorate

Banks are always judged by the officers and directors, and for this reason, the Bank of Saluda has enjoyed a liberal patronage their banking house is strictly modern and up-to-date in every detail, and their list of satisfied customers run into the hundreds, with a reasonable increase every year. G. R. Little,

is President of the institution, R. B. Station, Vice President, Walter Thompson, Cashier, and Miss Annie H. Hopper, Assistant Cashier. The directors are the following; J. M. Hearon, C. L. Hill, R. B. Station, D. M. Fraser, G. R. Little, and Walter Thompson.

CITY ADMINISTRATION DOING GOOD WORK

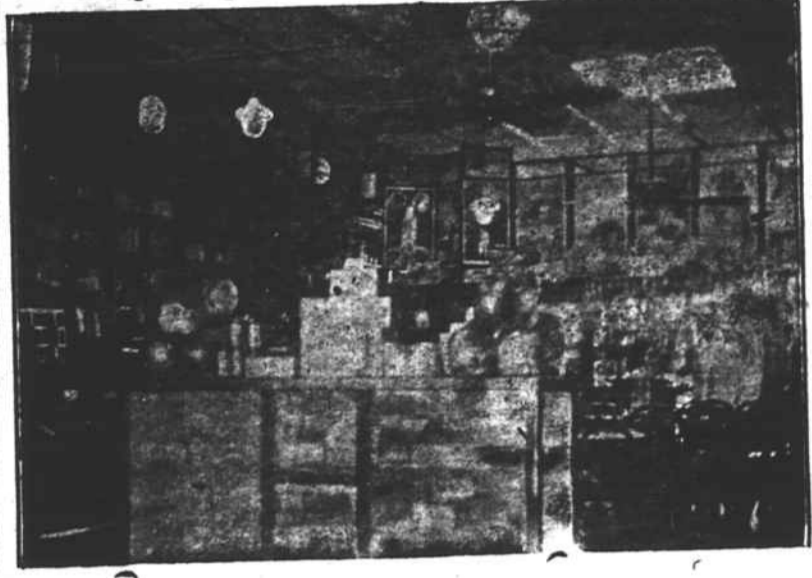
The present City administration of Saluda has probably done more for that town than any administration of previous years. The improvements that have recently been made and the contemplated improvements that are in store for the inhabitants of that town will put the town on a par with other municipalities of a much larger size. The hard surfacing of the town's main thoroughfares and the water extension besides other improvements, have put real life into the city.

Saluda is a good church going town, they have many denominations represented in the town, and some beautiful edifices to worship in.

READ THE POLK CO. NEWS

Saluda Dates Back To Old Indian Days

As its name indicates, Saluda dates back to Indian days, and was on the old State Line between Spartanburg and Asheville, the road known as the Howard Gap Road and followed for many years. The trading in those days was done at Flat Rock, Greenville and Asheville, the only means of travel being by wagon or stage coach. But long before the railroad came Saluda was a favorite mountain town and its delightful



INTERIOR SALUDA PHARMACY

"A Good Drug Store In a Real Good Town"

WE FEEL PROUD OF THE ACHIEVEMENTS THAT HAVE BEEN MADE IN THIS COMMUNITY AND EXPECT EVEN GREATER PROSPERITY FOR SALUDA AND POLK COUNTY. WE ARE PROUD OF THE GREAT STRIDES THAT ARE BEING MADE IN OUR CITY IMPROVEMENTS, AND OF THE FACT THAT GREATER PROSPERITY IS IN STORE FOR US.

WE HAVE STRIVED HARD TO GIVE TO THE PEOPLE THE BEST IN A REAL CITY DRUG STORE WE FEEL THAT WE ARE RENDERING A SERVICE THAT COMPARES FAVORABLY WITH THAT OF LARGER STORES. AND A STOCK IS IN KEEPING WITH OUR IDEALS OF AN UP TO DATE ESTABLISHMENT. MAKE OUR STORE YOUR HEADQUARTERS WHILE IN THE CITY, CALL ON US FOR ANY GENERAL INFORMATION, WE WILL DO OUR BEST TO MAKE YOUR VISIT TO SALUDA A PLEASANT ONE.

Headquarters For Rexall Remedies

SALUDA PHARMACY

G. R. LITTLE, Proprietor
SALUDA, NORTH CAROLINA

ite mountain resort, many people coming from the South in the Summer to enjoy its cool, delightful air. In 1878 the Spartanburg and Asheville Railroad opened up the country. The road was largely built by convicts in charge of Colonel A. Tanner, who was in fact one of the founders of the town of Saluda. The first train to come up the Saluda grade was on July 4th 1878. An excursion was afterwards run to Spartanburg and many came from the surrounding country on horseback and on foot to see for the first time a railroad train. For some time, until the road was completely stage coach-

climate and beautiful scenery will always attract the discriminating seeker for an ideal location in which to spend the summer.

SALUDA PHARMACY LIVE CONCERN

When you first enter the establishment of the Saluda Pharmacy, you at once realize that you are not in a little town drug store. This store is right in keeping with the city's march of progress, it has been



SALUDA LIVERY STABLE

es carried passengers from the head of the grade to Hendersonville and Asheville. Many remember the families of Thompson and Paces: Saluda was often referred to locally as "Pace's Gap." The homes of R. M. Pace and Mr. Thompson were the only homes for years that stood within what is now the corporate limits of Saluda. These beautiful homes overlooked the Piedmont plateau and were very distinctive in character, surrounded as they were by broken ridges of mountains and dense, silent woods. Flat Rock was also a notable

tiful fixtures as you will see in stores in real large cities, a line of high grade sundries and specialties are carried, they also maintain a modern soda fountain service. Dr. G. R. Little is the proprietor, and is a registered pharmacist of great distinction, he is one of the town's foremost citizens and is always taking an active part in the welfare of the city.

Little is Mayor
Dr. Little is also the mayor of the town, he has achieved great accomplishments for the town during this present administration and has a host of friends in the mountain



OVERBROOK ORCHARDS

summer resort for the people of the South especially from Charleston and Columbia. Many distinguished people from South Carolina and Georgia built beautiful home where they came to escape the summer heat, and where they gave some notable entertainments.

Dr. Goelet was the first resident physician to settle at Saluda, and his daughter, Julia Goelet was a deaconess in the Episcopal Church and did a great deal for the city. He is President and director in the popular Bank of Saluda, and is interested in many other business affairs of the county. His drug business has grown by leaps and bounds and is considered one of the most up to date establishments in Western North Carolina. This store is general headquarters for the entire populace and when you want to find friends in Saluda, its a safe bet that you will find them at this popular store.