

SCENIC BEAUTY A MARVELOUS SIGHT Western Carolina Mountains Famed Throughout the Great World

MOUNTAINS FAMOUS FOR CLIMATE AND BEAUTY

TRYON, June 26—Special: The News and Courier, carrying on in every way and in the finest manner that courtesy which for more than a century has been a notable and distinguishing feature in the lives of the gentlemen and gentlewomen of the South, has asked the Tryon Chamber of Commerce for a brief story with Tryon as a central motif.

Around all statements broadcast concerning Tryon's climate social and recreational advantages, the Chamber of Commerce has placed an absolute barrier against misrepresentation. No official, no member of the organization is permitted to give publicity to anything else than facts. It wants vacationists and those seeking permanent homes to find Tryon as it is represented to be. Rather a rare but creditable attitude to take in these days of rampant commercialism.

This little mountain city, the natural gateway from the Palmetto State to Western North Carolina, nestles in an elevated cove in the Blue Ridge Range and less than one mile from the geographical line separating North and South Carolina, where people have the same aims, the same hospitality, and the same high purposes.

Back in the formative and historically important period of our country, in which Christianians played the pre-eminent role, and many decades before the Southern Railway began serving the South, South Carolinians were wont to travel every summer to Tryon in "coach and four", accompanied by a retinue of servants, the leisurely made trip consuming days of time. The reasons for these annual pilgrimages has been handed down from generation, and each succeeding year the descendants of those gentlefolk, in annually increasing numbers, are making the same journey in a few hours, and for the same specific reasons. For them it means escape from the summer heat of the lowlands, and a change from the monotonous perspective of the coastal plains to a daily panorama of infinitely varied scenic wonder. Experience has taught them that the wearied of either sex, bending under a weight of responsibility, or worn with prosaic duties that seemingly never end, can here throw off a burden of spirit and renew strength of body and mind can here rest, revivify and absorb, with an effort, the glory of the mountains, the peaceful calm of the valleys, and that here is a section of nature reserved to man where he can truly find "acorns in stones, books in running brooks, and God in everything."

Has Rare Advantages

Tryon has other rare advantages. Its bracing air, its cool and refreshing nights, its restful and ever changing scenic grandeur are not all that attract hundreds of visitors and vacationists annually.

For those who desire recreation through athletic activity there are tennis courts, aquatic sports and golf. The Tryon Country Club has a very sporty nine-hole course of 3,300 yards, located in the beautiful Picolet valley, where, when one takes his "eye off the ball", he is penalized with a view of towering peaks, verdure clad to their summits. The club maintains a large swimming pool and showers for its patrons. This course is ten minutes away from town. Two other courses, at an elevation of 3,225 feet, are about ready for play. These are located in the Blue Ridge Forest development, near a large and artistic club house built of stone and logs, and adjacent to which there are fine tennis courts and a half-acre swimming pool.

Hog Back, Rocky Spur, Melrose, Big Warrior, Little Warrior, Tryon and White-Oak mountains, with excellent roads and 200 miles of bridle paths meandering to their tops open a delightful field for those fond of hiking and horse-back riding. On the climb the eyes will feast, not on that most wonderful of the Southland's attractions—the Magnolia Gardens—but on an ever-changing succession of laurel, rhododendron, flame azalea, and a myriad of other bewitching blooms that shoot forth from gorge, cavern an drogtoe over and through which streams having their fountainhead in bubbling springs flow down the mountain side.

Lake Lanier, with a shore line of over seven miles, will soon have its new dam completed, and will then offer facilities to the devotees of aquatic sports that will be unsurpassed anywhere.

For those seeking restful yet interesting and educational vacation periods, Lanier Library, with its 5,000 volumes of the best classical

and scientific works and the latest fiction, offers a medium of profitable pastime.

The quaint and artistic products of mountaineers, that hand weavers and the Toy Shop will compel admiration, and best of all the visitor will meet "real folks who have come here from all over the world to live, people whose lives are devoted to books, music, pictures good in deed, all combined with a close interest in world affairs. Some are writers some are famous artists whose exhibits will charm you into owning a bit in oil or water color that will remind you of some wondrous revelation of nature's beauty that has held you spellbound.

Five Hotels and Inns The Sabbath is not neglected. The Methodists, Presbyterians, Congregationalists, Catholics, Baptists and Episcopalians all have fine churches

PRATT TELLS OF CAROLINA BEAUTY SPOTS

Col. Joseph Hyde Pratt Gives Graphic Account of the Many Charms of the Western Carolina Mountains—Fine Highways Now open Up Long Hidden Points of Beauty and Charm.

By JOSEPH HYDE PRATT

Nature has wonderfully endowed western North Carolina with natural beauty of mountains and valleys with as wonderful and attractive scenery as is to be found in any section of the world, and with recreational facilities which make it the most ideal and delightful resort region in the United States with the Blue Ridge on the east, the Smoky mountains on the west, and with the foothills approaching the Ridge, on the east there is a region known far and wide for its beautiful scenery, healthful climate, pure water, and wonderful natural resources. North Carolina has not the

Great Smoky mountains, a mountain ridge over 30 miles long over a mile above sea level at every point, which offers some of the most wonderful and difficult climbing in eastern United States; Roaring Gap and Blowing Rock, with their commanding views of the North Carolina piedmont; Mount Pisgah and the Rat, which guard and protect the Pisgah National Forest, one of the most wonderful and accessible recreational centers of the United States, with its splendid stream fishing, camping facilities, and good roads; Linville, Jonas Ridge; and Shortoff mountains, bounding the Linville gorge, which is nearly 15 miles long and is the widest bit

are Lake James in Burke and McDowell counties; Lake Summit in Henderson county; Lakes Fairfield and Sapphire in Jackson county; Lake Junaluska, in Haywood county; and Linville Lake in Avery county. The smaller lakes Highland, Laurel and Kanuga in Henderson county, and Beayer lake in Bucombe county are also very attractive.

The surveys that have been made of the several counties of western North Carolina show that there is an opportunity of developing and constructing many lakes varying in area from a few hundred acres to 20,000 acres or more. In some instances these lakes will become the means of transportation and boat

hatchery and other lake fish. There is a federal hatchery for speckled and rainbow trout maintained by the United States bureau of fisheries at Erwin, Tennessee, which also assists in stocking the streams of western North Carolina.

These hatcheries are not only of economic value in the propagation of fish, but they also should prove of extreme interest to visitors in western North Carolina. Plans are being made for providing camping facilities and guides for the enthusiastic angler, and no more perfect setting could be suggested for an enjoyable and profitable outing—satisfying the most particular of the followers of Izaak Walton, than



MOUNTAIN SCENE NEAR TRYON, N. C.

There are excellent hotels, inns and boarding houses, with prices which vary according to service rendered but which are never excessive. One may choose according to his taste and purse.

Adjacent mountain areas, ranging in elevation from 1,200 to 3,250 feet are being developed under masterful directors, into attractive homesites for those who desire to spend at least a part of the year away from oppressive heat and amid surroundings of indescribable charm. Tryon cordially welcomes its visitor to participation in its social and intellectual life, to its field of athletic recreation, and to the joy of life renewal which its mountain-fauna and bracing air gives to all who come under its re-energizing influence.

There is only one way in which to keep from becoming a Tryon champion and that is to stay away from it. Please just come once and see for yourself if that is not true. Then you will come again and again and end by having a permanent home on one of its hills, and forever after live contented and happy.

Solarium Space Valuable

A solarium is a more economical use of space than an open porch, and, as we well know, space is becoming more valuable every year. With such a latitude for color and variety of furnishings, many a home will find the sun porch the most used room in her home. A new coat of paint about once each year keeps the sun porch and its furnishings new looking and protected.

Hollow Tile Plus Brick

To those who are tired of the brick exterior finish, hollow tile is a better alternative. It is claimed, certain hollow tile is over solid masonry.

The yard may be beautified next spring by planting bulbs about the flower beds this fall.

rugged bold scenery of the Rockies, or the Alps. Its mountains are softer in contour, its slopes wooded to the very tops of the mountains, and its plateaus and cultivated valleys are most restful to the eye. Yet there is to be found rugged scenery, and all the wild grandeur that many be desired.

Mountains

There are throughout western North Carolina many mountains that are unique in appearance, of wonderful beauty and majestic, such as Mount Mitchell, the highest peak in eastern United States, towering to a height of 6,711 feet; Grandfather mountain, the sentinel of the remarkable profile, Table Rock, with its almost perpendicular sides, which makes its ascent difficult and exciting; Chimney Rock, at the entrance to Broad river gorge, with a most commanding view of the piedmont region of North Carolina and South Carolina; Bald mountain, rising almost out of Lake Fairfield, which formerly was the home of a flock of wild goats; Caesar's Head and Whiteside mountain, with cliffs nearly one thousand feet high; Mount Guyot and Mount Kephart, and other peaks of the

of scenery in the east, and hundreds of other mountains and peaks, such as Pinnacle, Black Brothers, Satula, Syuga, Sunset, Craggy, and the Balsams, all of which merit a visit.

Altogether there are over 6,000 square miles of beautiful mountain country in western North Carolina containing 64 mountain peaks over 3,000 feet above sea level, and this country within 24 hours travel of 60,000,000 people.

Lakes and Streams

While there are no natural lakes, many artificial lakes that are being constructed, usually in connection with water power development, not only add greatly to the beauty of the mountain scenery, but makes a strong appeal to the lovers of fishing and hunting. There are now 20 lakes ranging in size from one acre to 7,000 acres, and still others are in process of construction. Certain lakes will be of sufficient size for sail boats, and all can be used for canoeing, rowing and small gasoline launches. These lakes, in time, will attract ducks and other wild fowl, thus making western North Carolina a mecca for the followers of this type of hunting.

Some of the more prominent lakes

lines will be used in transporting freight and passengers from one point to another. There is, therefore a great potential wealth in our lakes.

If we are to derive the greatest economic benefit from these lakes great care must be exercised in caring for them, that the shore line and bottom of the lake will always be in first class condition, regardless of depth of water.

There are more than 1,000 miles of beautiful trout streams in western North Carolina which afford delight to the angler, and these streams well stocked with speckled and rainbow trout will undoubtedly offer some of the finest trout fishing to be found in the country.

To insure the maintenance of a goodly supply of trout streams of western North Carolina the North Carolina fisheries commission is erecting four hatcheries for speckled and rainbow trout, at a cost of about \$75,000. One hatchery, to be known as the Morrison hatchery, is near Balsam, Haywood county another at Roaring Gap, Surry county, a third near Boone, Watauga county, and the fourth north of Marion in McDowell county. This latter hatchery will also be used for hatching

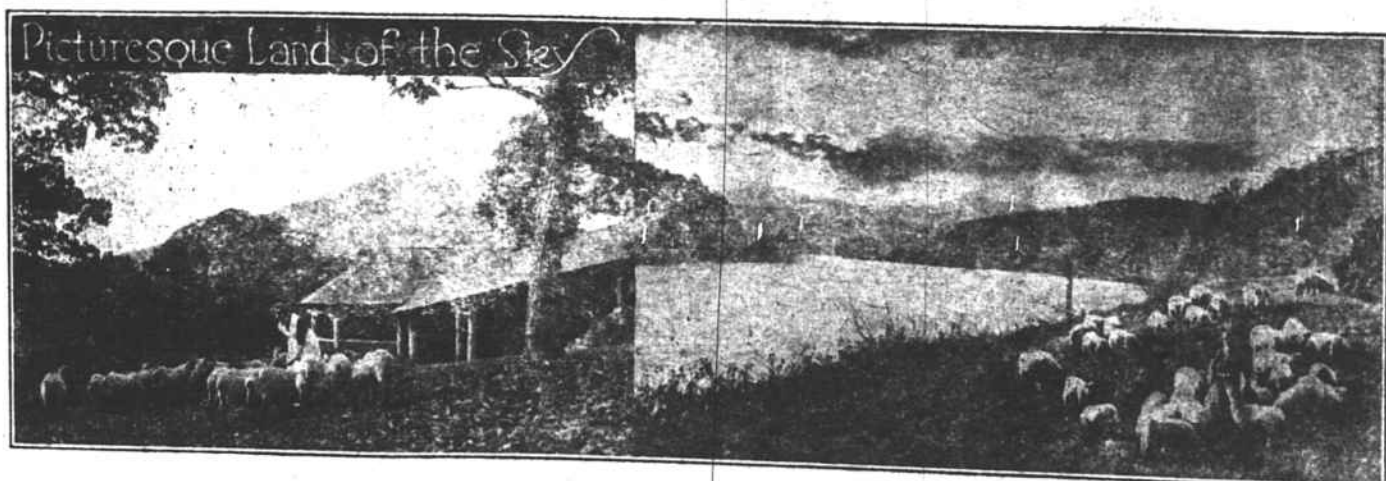
Linville, Nantahala, Davidson, Tuckasee, Buck Creek, Cullasaja, Toxaway rivers or along any one of a hundred other streams in the mountains of western North Carolina.

Several of the lakes provide excellent trout and bass fishing such as Linville, lake in Avery county Lakes Fairfield and Sapphire in Jackson county, and Lake James in McDowell county.

Waterfalls

The waterfalls that occur frequently along the rivers and streams of western North Carolina have not received proper recognition as a scenic feature appealing to the tourist. Transylvania county contains more waterfalls than any of the other counties, and is known as the "Land of Waterfalls." Among the more prominent falls are Renceliff Falls Bridal Veil, Conestee, Double Falls, Glen Canon Falls, High Falls, Looking Glass Fall, Maiden Hair Falls, and Dhododendron Falls.

Jackson county also contains some very wonderful falls as Whitewater, Tuckasee, Horsepasture, Bear Wallow, Toxaway, Among the other attractive falls that are well worth visiting are Catawba Falls in Avery county, and Chim-



Picturesque Land of the Sky

FROST KIST HAS BIG PLAN

One of South's Greatest Cream Plants, Doing Magnificent Business in the And Other Sections

The most complete most of the cream plants located in the entire south of the South Carolina State, with a capacity of nearly 1,000,000 lbs. of cream daily, is being built at the site of the old plant near the town of Tryon, N. C. The new plant will be a modern one, and will produce a high grade of cream, which is adapted to the needs of the market.

Modern Machinery is Being Purchased for the new plant, and this will result in the production of a high grade of cream, which is adapted to the needs of the market. The new plant will be a modern one, and will produce a high grade of cream, which is adapted to the needs of the market.

Supplies Many Towns The new plant will supply many towns in the south, and will be a great benefit to the people of the region. The new plant will be a modern one, and will produce a high grade of cream, which is adapted to the needs of the market.

The new plant will be a modern one, and will produce a high grade of cream, which is adapted to the needs of the market. The new plant will be a modern one, and will produce a high grade of cream, which is adapted to the needs of the market.

COTTON LEADS THE CROP

Some of the North Carolina sources of cotton are found here, and the state is producing a large amount of cotton. The state's cotton crop last year yielded a crop of 250,000 bales.