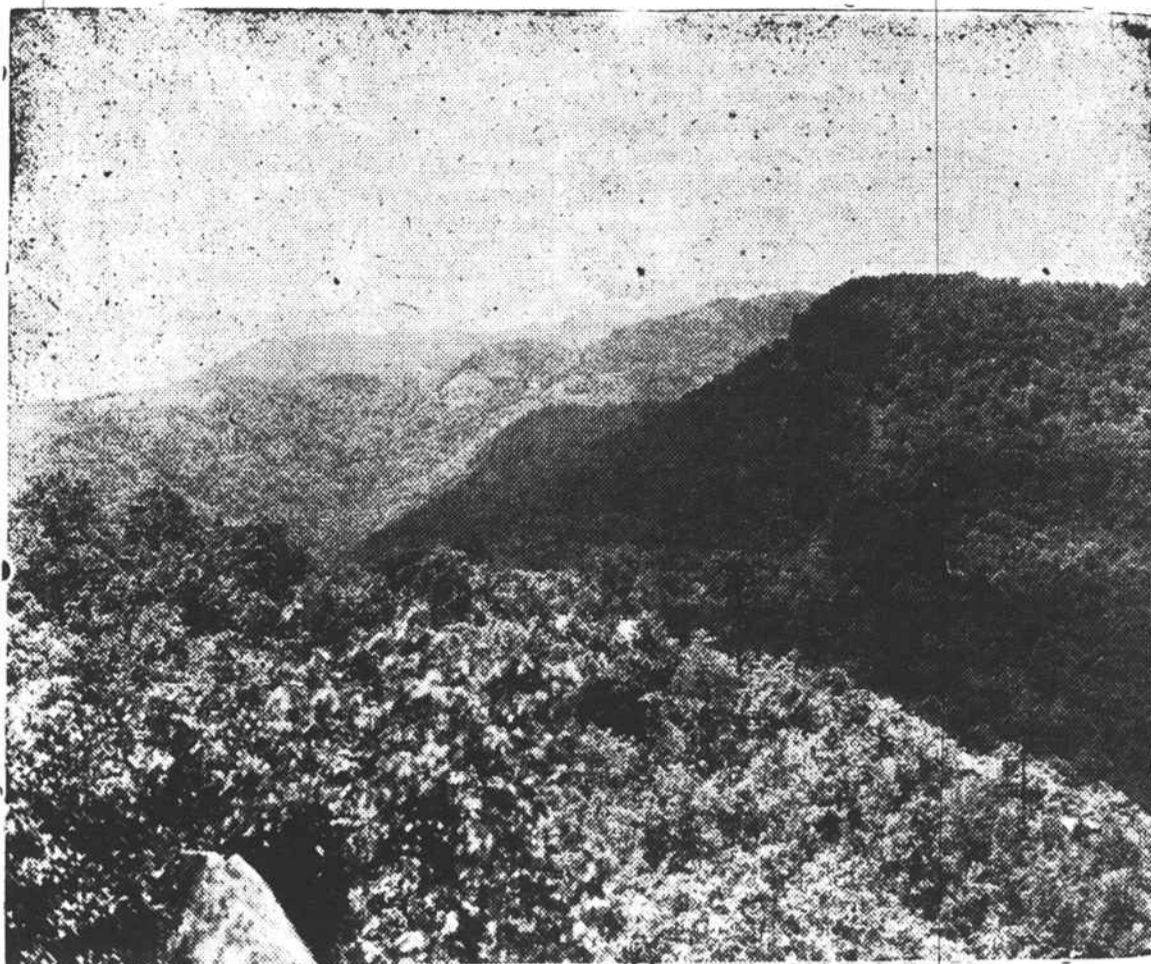


# “Hog Back” On Top of the World



The Beautiful Saluda Valley

## Blue Ridge Forest

**Weather?**  
 More than 20,000 acres of Blue Ridge Forest—the largest tract of its kind in the South—sit on the mountain's summit. The climate is similar to resorts in the North. At night, the temperature is at least ten degrees cooler than in the lowlands. In the daytime, if not decided by the wind, the sun is bright with fresh breezes. The climate is what a climate expert would describe as a salubrious one—warm in the shade and cool in the sun. Occasional frosts keep the air and keep the temperature from August through October. In 1926 the temperature taken by the weather bureau on the mountain and the minimum

Mountain. Already many of these have been bought by representative people and homes planned or actually started. These homesites are grouped in fourteen sections each differing in exposures and vistas. The dawn and the sunrise and miles of lowlands are the natural right of some—vivid sunsets behind tier on tier of mountain ranges with a background of Mitchell, Pisgah and other commanding peaks—the possession of others and there are a few which partake of both. So thrilling is the drama of each twenty-four hours that one artist who has painted there for several months finally declared, “Old Ma Nature changes so fast I just can not keep up with her!”

**Prices and Terms**

Attractive locations are still available. The price of half acre lots runs from \$1000 to \$2500 according to situation and there are several blocks priced from \$5000 to \$10,000. Payments may be made on convenient terms. Spring water, electricity and sewage disposal are brought to each lot without extra charge. Purchase of a homesite includes membership in the Hog Back Mountain Club with all its privileges. Meals of unusual excellence are served at the Club House so members do not need to provide for servants in their cottages. Children and young people are especially delighted with life “on the mountain” for there is so much entertainment. The hundreds of acres composing the top offer delightful and safe play grounds.

Although this property has been open for inspection only a few months, purchasers have already come from the states of North and South Carolina, Florida, Illinois, New York, Alabama, Minnesota, Michigan, Pennsylvania and Virginia.

**How to Get There**

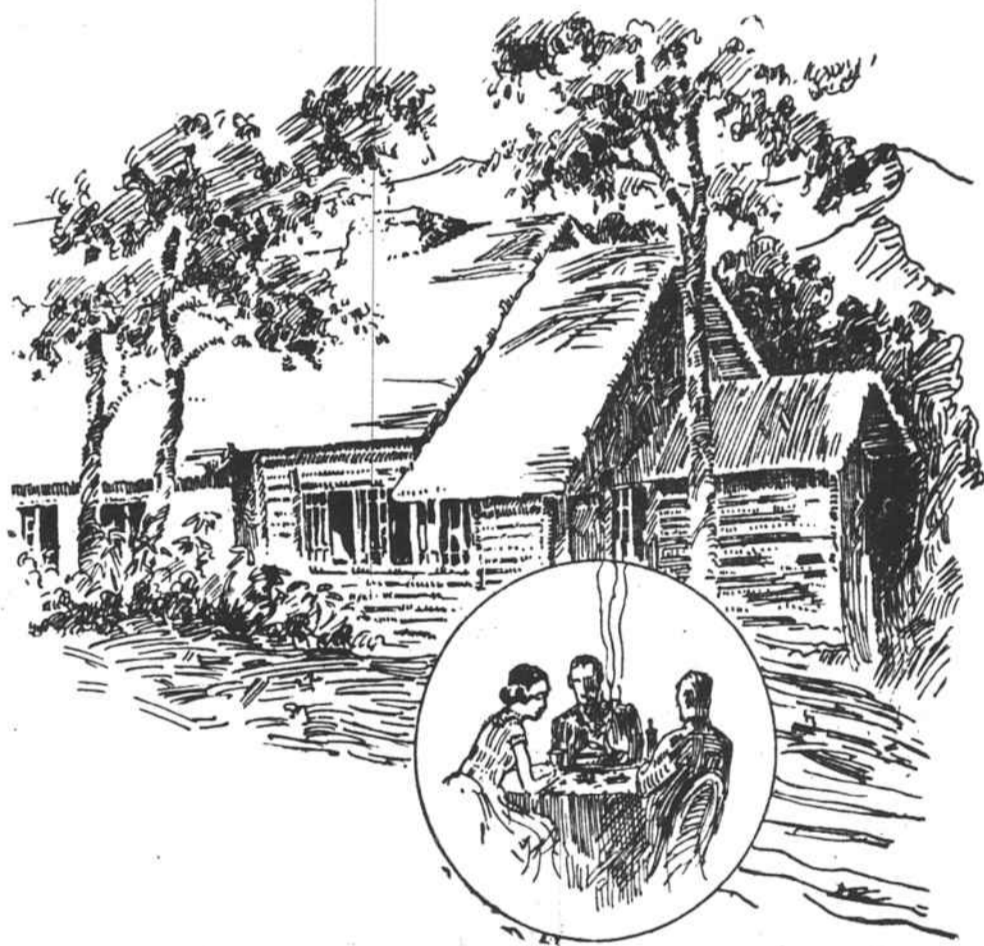
Blue Ridge Forest is eight miles from Tryon, North Carolina. Tryon is reached direct by train from Chicago and Cincinnati, Cleveland and Detroit. Coming from New York and Washington it is necessary to change at Asheville, N. C., or at Spartanburg, S. C. The motor roads to Tryon are National highways. The road from there to Blue Ridge Forest is well-graded and easy to drive. The second approach is by way of Merrittsville, S. C. on the Dixie Highway between Greenville, S. C., and Hendersonville, N. C.

**Visit the Mountain**

If you are interested in buying a homesite and joining the Hog Back Mountain Club you may be accommodated at the Club House. New Club Cottages with rooms and private baths are open and there is a guests camp for those who like sleeping in the open. All charges are reasonable. Write for maps of the property or detailed information about trains or motor roads.

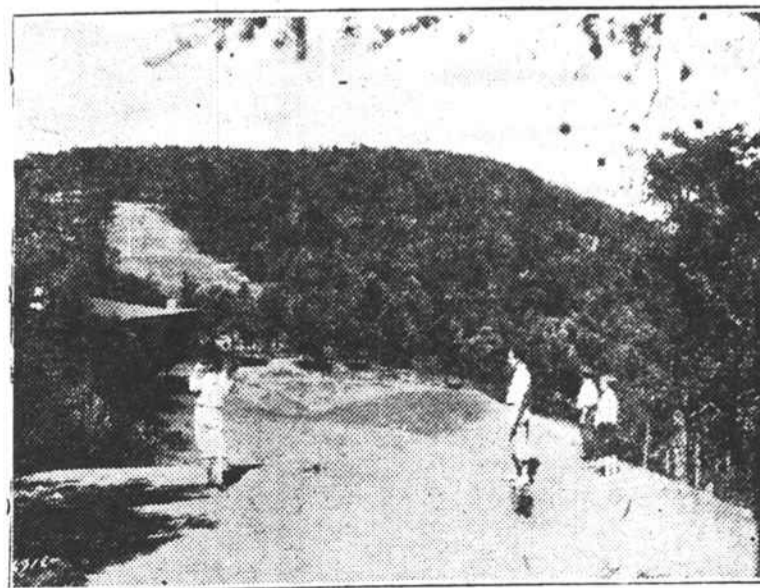
**Blue Ridge Forest**

Carolina Mountains, Inc.  
 R. C. REMICK, Pres.  
 A. M. LAW, Treas.



**Real Chicken Dinner**

In the charming stone and log Club House Mrs. Owen S. Bird, hostess, serves meals that are rapidly becoming famous. A real chicken dinner can be had either noon or night at \$1.25 per cover.



Nine Hole Golf Course

One of the high golf courses of the country. Excellent traps and hazards make sporty golf without too great a demand on the players.

# Blue Ridge Forest

Carolina Mountains, Inc.

A. M. LAW, Treasurer

**Telephone 237 Tryon**