

Scenes of the Colorful Carteret Coast

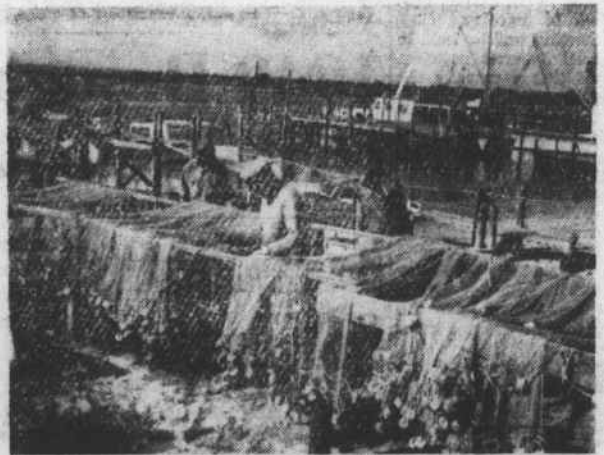


An air view of Piver's Island also shows Beaufort in the background. In the center of the picture is the United States Fisheries Biological laboratory, to the right are the terrapin pens (the

Photo by Aycock Brown square pools), smaller pens are also located to the left. At the extreme right can be seen the docks and some of the buildings of Duke Marine laboratory.



Even Santa Claus comes by boat to Beaufort.



As fall approaches fishermen can be seen all along the Carteret coast mending mullet nets.



The menhaden fleet along Beaufort waterfront.