

Tobacco Expert Speaks on Leaf Problems in Carteret County

S. N. Hawks, assistant extension tobacco specialist, State college, discussed tobacco production recently at a meeting at Newport school. His talk, illustrated with slides, is condensed below.

In selecting a permanent plant bed site, deep loamy soils that warm up quickly are most desirable; however, the success or failure of chemicals for soil sterilization can vary well depend on the use of light sandy soils. Where soil sterilization and permanent sites are used, more emphasis should be given to the exposure of the area to the sun, convenience of water supply, windbreaks, and proper drainage than to the type of soil.

Soil Preparation

Soils can be conditioned by the heavy application of well-rotted animal manure, heavy growths of crotalaria or cowpeas. Such manures should be incorporated into the soil about 4 weeks before sterilization. This practice will condition and fluff up tight soils and increase the water holding capacity of sandy soils allowing plants to be removed with a good root system.

The water supply should be given careful consideration. Ordinary sources of water are: continuously flowing streams, natural or artificial lakes or ponds, open dug well, and shallow driven or drilled wells, which will supply sufficient water within 15 feet of the ground's surface.

Shallow, open wells may be blasted along the edges of swamps. Ditches may be blasted to carry water from a stream or a swamp to the edge of cultivated fields. In all cases you should satisfy yourself that the water you are to use does not flow off an area already infested with tobacco diseases.

Black Shank

Black Shank is one of the most destructive tobacco diseases and is becoming more prevalent in Carteret county each year. The first symptom is a sudden wilting of the entire plant which is soon followed by death. The organism causing Black Shank multiplies and

spreads with extreme rapidity, and a single infection is enough to kill an entire plant. The nature of the organism makes it possible for it to be carried with great ease by water, and one tobacco field must be protected against contaminated drainage water from another. Other sources of infection are diseased plant beds, contaminated scrap tobacco, and manure.

Blue mold, another highly destructive tobacco disease is responsible for losses of 3 to 4½ million dollars annually. One reason for this is the fact that growers generally seed excess plant bed space with the hope that if blue mold occurs, enough plants to set the allotted acreage will survive the attack. Investigations and experiments have shown that dusting or spraying with suitable fungicides are the most dependable and practical methods for controlling blue mold.

For spray treatments, about 1½ pounds of 65 per cent zineb or 2 pounds of 76 per cent ferimate is needed per 100 yards of bed per season. For dust treatments, 20 to 25 pounds of prepared dust will be required per 100 square yards of plant bed per season.

Resistant Dixie Bright

Dixie Bright 101 was recommended by Mr. Hawks to be more resistant to Black Shank and Granville Wilt than any other variety. It should be topped very tall because the leaves are wide apart. When the plant is ready for harvest it has an unusual yellow color.

The root system of Dixie Bright 101 is very good. It will allow the plant to withstand the dry weather by penetrating deep into the ground and will feed off of the moist soil. During wet weather, the plant will not drown out very easily.

In 1950 a variety demonstration was conducted in six different counties in North Carolina and the average yield of Dixie Bright 101 was 1,762 pounds per acre.

If a farmer does not have any disease on his farm and grows his own plants, it would be best for

Power Companies Sponsor State 4-H Contests

Four - H members of Carteret county have been invited to enter the 1951 North Carolina 4-H Farm and Home Electric program. It was announced today by Neil Bolton, agricultural agent of the Tide Water Power company.

The contest is conducted by the North Carolina Agricultural Extension service, co-sponsored by Carolina Power and Light company, Duke Power company, Nantahala Power & Light company,

him to use other varieties. Mr. Hawks pointed out that there wasn't any "in-between" in Black Shank. You either have it or you don't have it.

If a farmer had a small infestation of Black Shank last season, it would be best to go ahead and use a variety of tobacco this year that is resistant.

Dixie Bright 101 can be purchased at local seed stores in the county.

Mr. Hawks added that a higher analysis of fertilizer is more desirable as less pounds may be used to the acre. It has proved unprofitable over a period of years to use fifteen hundred to two thousand pounds of fertilizer to an acre. Many of our farmers use 1,200 pounds of 3-9-8 when experiments show that 800 pounds of 4-12-8 would supply the same amount of plant food and a cash saving of about \$20 to the acre. He pointed out that heavy applications of fertilizer are detrimental to the quality of the plant, allowing it to burn in dry weather or grow too large under wet conditions.

Tide Water Power company and Virginia Electric Power company. Tide Water is sponsor of the contest in a 14-county area consisting of Beaufort, Bladen, Brunswick, Carteret, Columbus, Craven, Duplin, Greene, Jones, Lenoir, New Hanover, Onslow, Pamlico and Pender counties.

This program was planned to stimulate thinking and planning for a happier and more profitable farm life; to help find and make the most urgently needed applications of electricity on the farm and in the home; to stimulate long-range farm planning; and to provide such educational and technical assistance as the sponsoring companies and the extension service can make available to groups and individuals in the furtherance of better farm and home living, Bolton said.

All 4-H boys and girls now working under the supervision of the agricultural extension service of State college are eligible for this contest and may get entry blanks and record books from their county farm or home agents.

The contest will be scored on points gained through a record of the entrant's general 4-H record, plans for use of electricity and a record of personal and club activities. The closing date given is Sept. 15, 1951, when the entrants' record books are submitted to the county extension agents.

Four groups of awards will be made. The county awards, will be a two-day all expense trip to the 4-H Farm and Home Electric Congress to be held in Raleigh in the fall. This will be given to the winning boy, girl and extension agent from Carteret county by the Tide Water Power company. Four gold-filled medals of honor for the Blue Award group (two boys and two girls) will be awarded in Carteret county by the Westinghouse Education Foundation.

At the 4-H Farm and Home Electric Congress, Tide Water Power

company will award the boy and girl winners from its territory two first prizes of \$100 scholarships. There will also be two second prizes in this territory of engraved gold watches.

The all-state winner will be awarded an all-expense trip to the National 4-H Club Congress in Chicago, Nov. 25-29, 1951. To the county reporting the most outstanding 4-H Farm and Home Electric Program will be given a handsome plaque.

The final award group will be selected at the National Congress, and will consist of six college scholarships of \$300 each. These winners will be selected from the state winners.

"This contest is sponsored nationally by the Westinghouse Educational Foundation," Bolton said, "and has been found to be of great worth throughout the nation. All 4-H club members are urged to see their extension agent to obtain an entry blank and to get help in planning the project."



"HURRY UP" SERVICE ON YOUR FARM AND IN THE FIELD

If you have a breakdown in the field, give us a ring. Our factory-trained mechanics can install new parts, weld a break, or make adjustments right on the job.

We are standing by to save you time and trouble during rush seasons. Tear this out to keep our phone number handy.

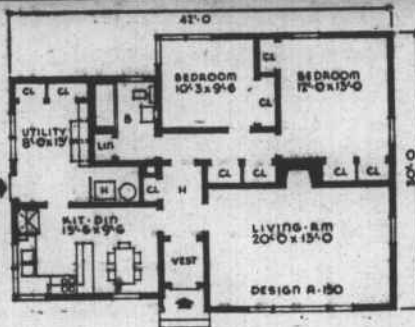


Newport Tractor & Equipment Company

YOUR ALLIS-CHALMERS DEALER

Highway 70 Phone 42-2 Newport, N. C.

AN IDEAL FARM HOME



THE ANGLIA has the living room and kitchen facing the front of the house with the two bedrooms and bath in the rear opening into a small hall. Adjoining the bathroom and kitchen is the utility room with an alcove for the hot water heater and furnace.

The first floor is an insulated concrete slab laid on either a gravel or cinder fill, to be covered with composition flooring or carpeting.

Closets are provided for in the hall, bathroom, all bedrooms and in the utility room.

Plans call for frame construction, insulated walls and ceiling, wide siding and asphalt shingles.

Dimensions are 42 feet by 30 feet. The floor area is 1,262 square feet, with cubage being 14,525 cubic feet.

We have the most complete selection of plans for ideal small homes in this area, plus the materials to make them to your specifications. We also are ready to help you modernize and repair your present home.

HUNTLEY'S

Beaufort

N.C.



THE TOPPER IS AN Easter Winner

STRIDES JAUNTILY THROUGH SPRING TOO!
No Season Limit on Our Toppers
They're Bright, Gay and Comfortable Any Season of the Year

We Have Them In All Lengths And In Every Color Imaginable

PRICED LOW FOR YOU \$9.95 to \$39.95

COPLON-SMITH New Bern, N. C.