

2,600-Ton 'Midget' Founders at Portsmouth Sunday

Beaufort Recovers from Devastating Blaze

Crew of 26 Saved as Flash Storm Hits Coast Sunday

Minus all but the clothes they wore, 26 shipwrecked seamen arrived by bus in Norfolk early this morning from Washington, N. C., while their 2,600 ton, 235-foot Panamanian freighter S.S. Midget lay, a broken hulk spewing wheat from its holds, on Portsmouth Island beach.

Bound from Norfolk to Brazil with its cargo of grain, skippered by Captain Ludolph von Tandem and manned by a Greek crew, the Midget was due at Morehead City port at noon Sunday, to take on bunker fuel when it was struck by a double blow.

Line Clogs, Cyclone Hits
Its fuel line clogged just as a madcap tropical storm of cyclonic force struck it off Hatteras.

At 1 p.m. Sunday Captain von Tandem radioed Norfolk Coast Guard and stated that while he had sufficient fuel to reach Morehead City, not enough could be coaxed through the lines to get up sufficient head of steam.

Coast Guard cutters Agassiz and Conifer, dispatched to her rescue, were unable to put tows aboard, tide and wind having combined to drive the Midget into shallows off Portsmouth.

Ship Abandoned
At 2:55 a.m. yesterday Captain von Tandem ordered abandon ship and the entire complement took to a lifeboat which eventually broke up in the surf. From that point the men waded ashore.

At 6:30 a.m. they were transferred to Ocracoke on an 83-foot Coast Guard vessel, and later to Washington where they left by bus for Norfolk.

The off season blow developed off the western tip of Cuba Saturday, plummeted across southeastern Florida, caught Miami with its awnings down, stampeded gold coast tourists to the nearest train ticket windows, screamed northward 250 miles east of the Georgia coast, gave Hatteras a nasty lick and, at last reports today, buried itself in the North Atlantic.

Split Switch Wrecks Rail Cars

An overturned rail caused a split switch on the A&EC line near Morehead City port Friday afternoon. Two tank cars jack-knifed, one struck a freight car and the other jettied out over highway 70.

Cars several feet down the line were lifted from the track by the crazy angle of the tank cars and traffic on the highway had to be diverted around the protruding tank car. The tank car, leaning at an angle of 45 degrees, lay that way until workmen lifted it off its wheel base to remove the traffic hazard.

Folks Assist Culpepper Family

Neighbors and other residents of Carteret county have contributed clothing, cooking utensils and other household items to the Otis Culpepper family of Mill Creek whose home burned Wednesday afternoon at 1:30.

Mrs. Culpepper stated that the flames started from the wood-burning cook stove in the kitchen. Her husband was sick in bed at the time and all the children, except the youngest, Robert, were in school.

The house burned completely to the ground. Only the brick pillars on which it stood remain. Mrs. Culpepper said the house will be rebuilt on another site right nearby the old home. At present the family is living in a small frame building several hundred feet away.

Persons who had been living there are now living at Newport. That building stands on land owned by the Culpeppers.

In the family, in addition to Mr. and Mrs. Culpepper, are Billy, 18, Ben 16, Sadie 14, Jesse 12, Joe 10, Charles 9, and Robert 6. Several other sons and daughters are married.

Morehead City Rotarians Hear Talk by Marine Officer

An interesting talk on the lives of the Koreans was given Thursday night at the Morehead City Rotary club meeting by Capt. Daniel Somerville, USMC, Morehead City. The captain served as a pilot in Korea for 12 months.

The North Koreans are destitute, he reported, their chief occupation is fishing. In the southern part of Korea the people are poverty-stricken also and their only way of making a living is by farming. Without the knowledge of crop rotation and without the proper farming equipment they have a hard time growing enough to keep themselves alive.

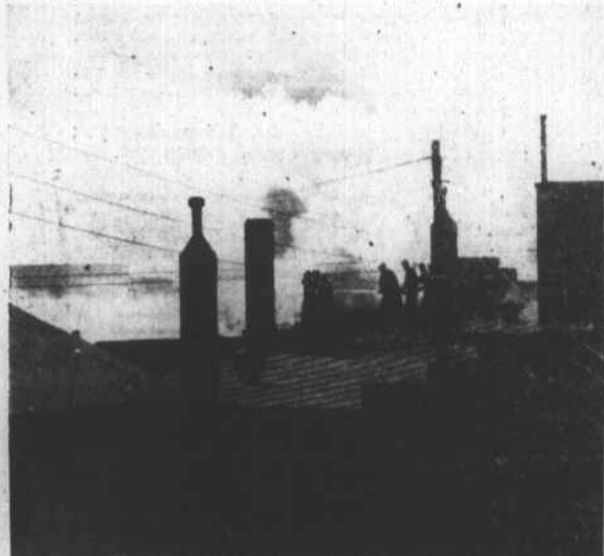
Receipts Total \$707
Parking meter receipts in Beaufort for the month of January amounted to \$707, Dan Walker, town clerk reported today.



Clouds of black smoke rolled seaward and skyward from three blazing stores in Beaufort Thursday morning. The blaze started when an explosion occurred in the rear of the Eastern Rulane agency on Front street.



Repeated monstrous puffs from the three burning buildings, Rulane, Downum's 5 and 10, and Downum's department store, blanketed Front street intermittently with yellow smoke that obstructed visibility and made breathing practically impossible.



Battling firemen pour water from the roof of Eastman's Furniture store on top of flames in the Rulane and Downum buildings.



Beaufort firefighters train a hose upward from the sidewalk as heat subsided about noon, allowing them to get closer to the source of the blaze. This shows the front of Eastern Rulane. Today the store is boarded up to prevent the curious from wandering among ruins and being trapped by charred timbers or walls in danger of collapsing.



From Beaufort's ladder truck, firemen clambered hour after hour to the rooftops, carrying with them hose through which tons of water flowed.

Photographer Shoots News Photos Thursday

Chamber to File Protest with CAB

Dan Walker, manager of the Beaufort chamber of commerce, today corrected a statement which appeared in Friday's NEWS-TIMES regarding the airport located in Beaufort.

According to information given THE NEWS-TIMES, a compromise was reached with Piedmont airlines last summer during a Civil Aeronautics board hearing to the effect that Beaufort would be satisfied with the designation "Morehead City-Beaufort" airport providing flights between New Bern and Wilmington were routed via the Carteret airport.

Walker stated that the Morehead City-Beaufort designation has been approved by Ferdinand Moran, CAB examiner, but the Beaufort chamber of commerce is going to file a protest.

In a formal statement Friday, Walker said, "We see no reason why the Civil Aeronautics board or Piedmont airlines cannot comply with the designation, Beaufort-Morehead City airport, which has been given the landing field by the county commissioners and which designates also the committee in control of the airport, the Beaufort-Morehead City Airport authority. Thereport, a protest will be filed immediately."

Jerry Schumacher, Morehead City photographer noted for his studio work, proved Thursday that he can also shoot superlative news pictures. All pictures of Beaufort's Thursday fire appearing in this paper were taken by Schumacher.

The Schumachers, Jerry and Penny, his wife, arrived in Morehead City late in July, returning for a permanent "visit" six years after they first saw Morehead City from their yacht, "The Last Penny."

House Burns At Broad Creek

The two-story frame home of Mr. and Mrs. Ed Jones, Broad Creek, burned to the ground at 1:30 Thursday afternoon. The flames, bursting from the attic, were discovered by Van Salter, Jones, who is a preacher, and his wife, were at a funeral at Swansboro when the tragedy occurred.

People in the neighborhood tried to save furniture and other items in the house but the fire had advanced too far by the time the word had spread. No fire departments were called.

The cause of the blaze has not been determined. The house was valued at \$8,000 and was insured for \$2,500.

Mr. and Mrs. Jones are living now with their son, Roger Jones of Broad Creek.

Specialist to Conduct Meeting This Afternoon

A special interest meeting on "Making Lamp Shades" has been scheduled for 1:30 this afternoon in the home agent's office, announced Miss Martha Barnett, home agent, yesterday. The demonstration will be given by Mrs. Katherine Riggle, extension specialist in housing and house furnishings. All club members and any interested outsiders are urged to attend.

The Home Demonstration club meetings for the week follow: Wednesday, Core Creek-Harlowe, 1:30 p.m. with Mrs. J. H. Davis. Mrs. Emma Oglesby hostess; Wednesday, Russells' Creek, 7:30 p.m., Mrs. Leslie Springle; Friday, Pelletier, 2 p.m., Mrs. Allen Vinson.

Tide Table

Tides at Beaufort Bar

HIGH	Tuesday, Feb. 5	LOW
4:02 a.m.		10:41 a.m.
4:20 p.m.		10:33 p.m.
Wednesday, Feb. 6		
4:58 a.m.		11:37 a.m.
5:17 p.m.		11:27 p.m.
Thursday, Feb. 7		
5:50 a.m.		12:24 p.m.
6:08 p.m.		
Friday, Feb. 8		
6:35 a.m.		12:17 a.m.
6:54 p.m.		1:06 p.m.

Farmers Will Go on Tour Through Florida Truck Areas

Farmers of this area and the entire state are being offered the opportunity to tour Florida to observe methods of producing, processing, and marketing vegetables. The tour will also include visits to the cattle producing areas of the state.

Sponsored by the state department of agriculture in conjunction with the state college extension service and the Atlantic Coast Line railroad, the trip will cover six days, Feb. 17 through Feb. 23.

Farmers, agricultural workers or other persons interested in agriculture are eligible to take the trip. They will board a train at Rocky Mount Feb. 17 and go by Pullman

to Jacksonville, take a day-coach to Orlando where they will de-train and board a chartered bus. The bus will travel to a beef cattle ranch south of Kissimmee, visit an orange concentration plant at Lake Alfred, go through Florida's famous citrus area, visit vegetable fields and packing plants in the muck section of Lake Okeechobee, observe a modern lettuce-packing plant, pre-packaging plants, and other packing houses from Homestead north to Tampa where they will again board a train for the return trip.

Reservations for the trip, which will cost each person an estimated \$10, should be made immediately. See FARMERS, Page 5