

DEMOCRATIC ERA ENDS



1. CCC: In March 1933, Civilian Conservation Corps was created to provide jobs. Here, city youths work in Rainier National Park.

When Dwight D. Eisenhower takes the oath of office as President of the United States on Jan. 20, it will mark the end of two decades of successive Democratic administrations, those of Franklin Delano Roosevelt, and of Harry Truman.

It was 20 years ago that Roosevelt set out to break the back of the economic depression with the "New Deal." It began with a long list of unprecedented legislative projects. Insurance of bank deposits was authorized. The Agricultural Adjustment Act was passed to give farmers benefit payments. Millions were appropriated to the Federal Emergency Relief Administration and the Civilian Conservation Corps to provide jobs. The TVA was started. The Securities and Exchange Commission was established to protect investors. It was the period of NRA (National Recovery Act), the beginning of social security, the REA (Rural Electrification Act) among numerous others. Controversial as many of the measures were, there is no doubt they signalled a new era.

The period of peacetime economic readjustment was followed by the outbreak of World War II, and the beginning of an atomic age. With war's end in sight, Roosevelt died on April 12, 1945, soon after starting his fourth term. Vice President Truman took over. The World War ended, but not Truman's problems: the cold war with Russia, the hot war in Korea, the drive to consolidate allies in a free world, new tensions, new threats. The problems are still there as a Republican era begins.



TWO PRESIDENTS. President Roosevelt and his running mate, Harry Truman, after 1944 victory at polls. Five months later, Roosevelt was dead and Truman was new chief of state.



2. TVA: Tennessee Valley Authority, whose lakes, dams and power lines sprawl over vast area of upper South, was another creation. Here are some linemen at work in the Valley.



3. NRA: National Recovery Administration was established to enforce codes of "fair competition" in industry.



4. NLRB: Mrs. Elinore Herrick, a National Labor Relations Board director, settles 1937 dispute.



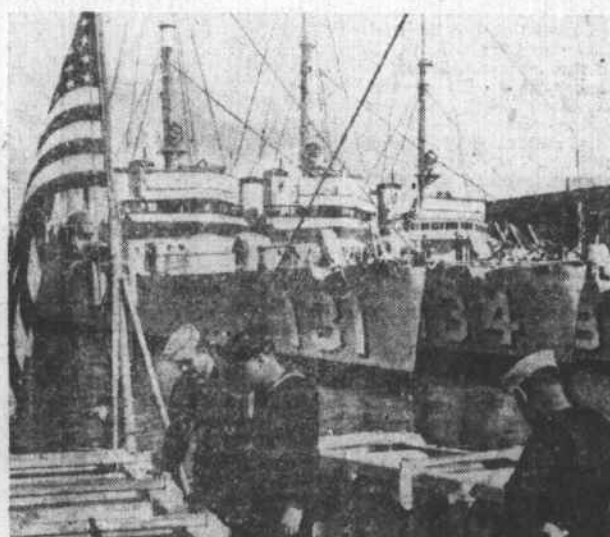
5. WPA: Works Progress Administration was established in 1935 to create jobs through public construction and other projects.



6. SOCIAL SECURITY: The 1935 Act set up welfare, old-age, unemployment insurance. Here, claims are being certified.



7. PEACETIME DRAFT: Secretary of War Stimson draws first number, Oct., 1940, inaugurating start of nation's first peacetime draft.



8. AID TO BRITAIN: U.S. sailors show British tars depth charges used on the 50 over-age U.S. destroyers traded to Britain in 1940 in return for naval and air bases.



9. WORLD WAR II: An American soldier forging ahead symbolized nation's long and bloody march to victory on two wide-flung fronts.



10. ATOMIC AGE: First successful experiment of man-made nuclear fission in Chicago, 1942, ushered in atomic era, led to development of atomic bombs. Here is atomic blast in Bikini lagoon.



11. MARSHALL PLAN: Aid to Western Europe followed 1947 Truman Doctrine of aid to Greece, Turkey.



12. KOREAN WAR: A U.S. Marine rushes on toward a hard, relentless foe in early days of Korean conflict.



13. NATO: Gen. Eisenhower at SHAPE in Paris, 1951, when he commanded western Europe's forces under North Atlantic pact.