

Atlantic Reaches Toward League Title with Wins

Atlantic won the first two games in the championship three out of five series for the top spot in the Carteret county league Sunday afternoon defeating Newport by 11 to 5 in the first game and 4 to 3 in the second.

In the first game Atlantic scored 11 runs on 12 hits with McKamey the winning pitcher. Newport had 5 runs on 7 hits and Walter Hill was the losing pitcher.

Atlantic took the second game with 4 runs on 10 hits with Gary Morris the winning pitcher while Newport was getting 3 runs on 6 hits and McClannan was the loser.

In the all important second game, the score was tied at the end of the regular seven innings at 2 to 2. Buckshot Haskett hit a long home-run to put Newport in the lead at 3-2. Then Atlantic's murderer's row came to bat.

McClannan retired the first batter before Jack Rose drove a triple to center. John Hamilton then hit a line drive double deep into the left field woods sending the tying run across the plate. Frank Cahoon, Newport manager, then ordered Johnnie Willis walked to give them a chance at a double play. Joe Willis then hit a grounder to first which was fielded and thrown to second getting one man, but Taylor who had played perfect ball all afternoon made a costly error by throwing wild to first which allowed Hamilton to score the tie-breaking run.

Willis was Atlantic's big gun with three for four. Haskett was the losers' leading batter with a homer and a single.

Next week the two teams will play at Morehead City. If Atlantic wins the first game, the series will be over, but if Newport wins the first then the teams will play a double-header.

TV Stations Won't Need Special Color Equipment

New York (AP) — When color television gets under way, it won't be necessary that each station of a network add special equipment to broadcast color as long as the signal is coming to it via network. It merely has to relay the signal as originated by the network key station.

This will not hold where a station plans to transmit its own original color program. In that case it will have to install both color cameras and color generating apparatus.

In case of the receiver, special color adapters or receivers will be necessary.

Beaufort Team Small, But Game

A relatively small and inexperienced Beaufort team will meet the New Bern Bears Sept. 11 in New Bern for the first game of the season, Coach Kenneth Stargardt said today.

"We were hit hard by graduation last year which cost us nine experienced men," the coach continued. "I have really been pleased though with the spirit the boys have shown on the practice field."

The boys have been working out twice a day since Aug. 17 but beginning today they will go on a schedule of one practice per day. At the present time about 20 boys are reporting for the practice sessions.

Coach Stargardt said that this number would be increased when some boys recover from slight injuries and he also expects more boys to come out for the team after school starts Wednesday morning.

The rest of the Beaufort schedule is Camp Lejeune away, Sept. 18; Sept. 25 and open date; Richlands, home, Oct. 2; Morehead City, home, Oct. 9; Shallotte, away, Oct. 16; Jones Central, home, Oct. 23; Pamlico Central, away, Oct. 30; Swansboro, home, Nov. 6; and Ayden, away, Nov. 13.

Controversy Develops On Bowing to Dr. Sun

Taipei, Formosa (AP)—Quite a controversy has developed on Formosa as to whether it is idolatry for a Christian to bow before a portrait of Dr. Sun Yat-sen, founder of the Republic of China. The controversy, which has been going on behind the scenes, has sprung into the open with letters to the editors.

Many Christian students hold that it is idolatry to bow before the statues or pictures of Dr. Sun. Nonsense, said the Ministry of Education. Students in public schools, as are all Chinese citizens at all public meetings and ceremonies, are required to bow before Dr. Sun to show their loyalty to the nation.

San Francisco (AP) — The Chinese Communists are starting a five or six-year program to eliminate a drought menace in Hubei province by construction of some 2,500 small reservoirs, Peiping radio says.

Lost Colony Ends Season



The Lost Colony, Paul Green's symphonic drama at Manteo, will end its 13th season on Roanoke Island Sunday night, Sept. 6. The drama which will have attracted 700,000 people by the end of this season since its start in 1937 is the oldest outdoor production in America. Tentative date for the start of next season is June 26, R. E. Jordan, general manager, stated this week.

Photo montage by Carol Martin.

Sandwiches in Season



Open face crab and cheese sandwiches for summer lunch.

By Cecily Brownstone Associated Press Food Editor

IT'S OPEN SEASON for open-style sandwiches. All of summer's bounty to use in their making! So inviting they look on the plate! Perfect for warm weather, these open sandwiches, because you can prepare them quickly, vary them infinitely. Just how infinitely we have known ever since we visited the little country of Denmark, where the open sandwich is a national institution, and we counted 172 varieties on the menu of the famous Oskar Davidsson restaurant.

The advantage of the open sandwich, we read on the Davidson bill of fare, is its one piece of bread. This way there is "nothing to hide the lovely colors of the tasty morsels of meat, fish and vegetables" that are placed on it. Of course there's nothing to prevent you from eating as many open sandwiches as you like. Here, for instance, are some delectable combinations.

1. Mix a cup of finely chopped young fresh leaves of spinach with a third cup of mayonnaise and a little minced onion; pile on pumpkin bread. Serve with another open sandwich of a slice of roast beef garnished with sliced hard-cooked eggs, mayonnaise and watercress.

2. Pile tuna fish salad on a slice of rye bread, dust with paprika and garnish with green pepper and small sweet onion-rings. Serve with another open sandwich of sliced avocado and pimiento strips.

3. Pile soft cheddar cheese mixed with chopped green olives and walnuts and mayonnaise on one slice of white bread; serve with an open sandwich of sliced ham and shredded lettuce.

4. Arrange slices of marinated cucumber on a slice of white bread; serve with another open sandwich of diced fresh lobster mixed with diced fresh tomato

To Sportsmen

Watch this ad for opening dates of different game seasons

MARSH HEN—Opens Sept. 1st. Closes Oct. 30th
DOVE—opens Sept. 15th Closes Oct. 29th
Opens Dec. 27th Closes Jan. 19th

COMPLIMENTS
BILL ORTON
Camp Glenn
Motors
Hi-way 70 West of
Morehead City, N. C.

— Congratulations —

to the new

Colonial Store

in Morehead City

Morehead Builders
Supply Co.

"EVERYTHING IN THE BUILDING LINE"

Phone 6-3059

Morehead City - New Bern Highway

(peeled and seeded) and mayonnaise.
5. Put a thin slice of cold roast pork on a slice of whole wheat bread; serve with another open sandwich of sliced pickled beets and romaine garnished with mayonnaise.

For our last open sandwich we have a special recipe that goes over big whenever we serve it for lunch.

Open Face Crab and Cheese Sandwiches

Ingredients: One 6½-ounce can crab meat, 1 teaspoon lemon juice, ½ cup real mayonnaise, 3 tablespoons milk, ¼ teaspoon salt, 8 slices bread, extra mayonnaise, 2 tomatoes (sliced), 4 slices American cheese, pimiento-stuffed olives.
Method: Flake crab meat and mix with lemon juice. Blend ½ cup mayonnaise, milk and salt; toss lightly with crab meat. Spread

half the bread with extra mayonnaise. Cover with tomato slices and top with crab meat mixture. On remaining bread slices place cheese. Broil crab meat and cheese until golden brown. Garnish center of open cheese sandwiches with sliced olives. Serve at once. Makes 4 servings.

Escape-Proof Jail Not Escape-Proof After All

Miami, Fla. (AP) — Miami's "escape-proof" jail is on the 20th floor of a skyscraper. An accused killer disappeared from it the other day.

The fugitive was recaptured, explained that he had found a garden hose, slid down it to the 19th floor, entered a window, waited five minutes for an elevator which carried him to freedom.

Merrill's Dress Shoppe

Beaufort, N. C.

Proudly Presents



For Fall

No. 9291 — Betty Jean uses feminine wiles to enchant Irresistible Poodle. Flattering grace in gentle, flowing lines, roomy raglan sleeves. Milium iridescent taffeta lining. Sizes 6-20, 7-15. Beautiful selection in six vibrant colors: Grey, Blue, Pink, Red, Turquoise, Sherry.



\$45

You Can Bury Your Money

in the back yard or hide it in the sugar bowl or in a mattress

but we know of a much better place . . . and we have never yet heard of interest being paid on money in the back yard, sugar bowl or mattress. Have you?

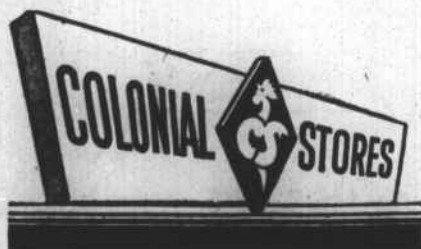
FIRST-CITIZENS BANK & TRUST CO.

MEMBER FEDERAL DEPOSIT INSURANCE CORP.

823 Arendell St. Morehead City, N. C. Phone 6-4151

Straight Kentucky Bourbon
\$2.60 \$4.15
1.5L 4.5 Qt.
4 YEARS OLD 86 PROOF
GEO. A. DICKEL'S 'CASCADE' KENTUCKY STRAIGHT BOURBON WHISKY
GEO. A. DICKEL DISTILLING COMPANY LOUISVILLE KY

We Take This Opportunity To Wish . . .



Years of Continued Success in Their NEW HOME!

It was a pleasure to have had a part in the building of this fine store.

Barrus Construction Company

KINSTON, N. C. TELEPHONE 4075

Standard Asphalt Pavements

A. K. BARRUS, Pres. B. W. THOMAS, Secy.
M. R. COWPER, Vice-Pres. WM. H. COBB, Treas.

Congratulations —



To Colonial Stores

AND THE FORMAL OPENING OF THEIR NEW STORE IN MOREHEAD CITY THURSDAY, SEPTEMBER 3

We are happy to have been chosen to install the roof on this attractive and modern building.

Clyde Jones Co., Inc.

Quality Siding and Roofing

2800 Arendell St.

Morehead City