

Colorado Disputes Bridge Claim of West Virginia

Denver (AP)—So West Virginia thinks it has the world's highest bridge.

"A peanut-growing state dealing in peanut figures," said Colorado Gov. Dan Thornton recently of a claim attributed to the World Almanac that a turnpike bridge across the Bluestone River near Princeton, W. Va., is the world's highest over water.

The bridge is 255 feet above the river.

"Apparently they never heard of the Royal Gorge Bridge over the Arkansas at Canon City," Thornton said. He sent an assistant scurrying out to check the height of the southern Colorado bridge. Officially, it is 1,053 feet above the churning Arkansas River.

The plant from which vanilla is extracted is an orchid.

Movie Title Causes Halt in High School Assembly

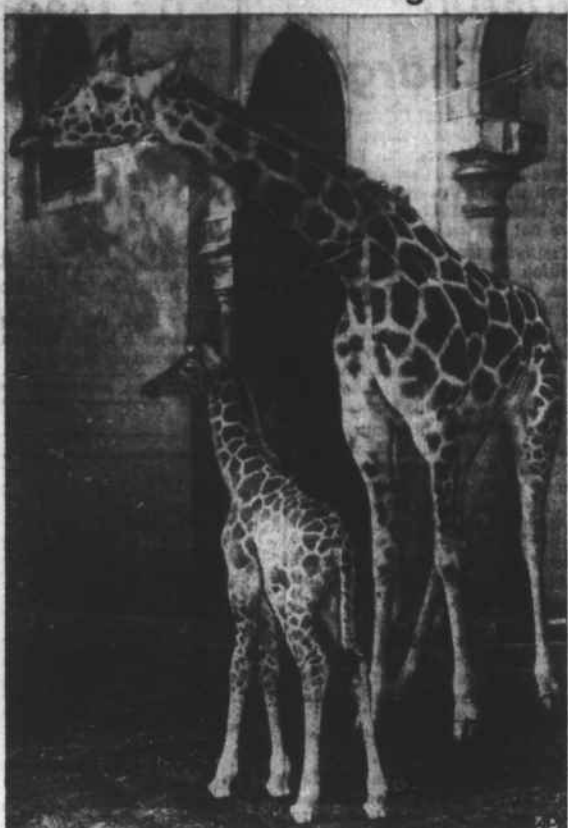
Ottawa, Kan. (AP)—Reading from notes, Jack Davis, student council president, faltered while attempting to announce the name of a color movie about to be shown at a high school assembly.

Principal Leroy Hood helped Davis decipher the notes, then explained to the student body that the writing was that of a member of the junior high faculty.

The movie's title: "The Legibility of Handwriting."

Pleasant Jolt
St. Joseph, Mo. (AP)—Melvin Swebston, city liquor supervisor, had been deaf in his left ear for some time. The other day he accidentally stepped off a sidewalk and got a jolt. A few minutes later Swebston found he could hear perfectly with his left ear.

Out for An Airing



The Rome, Italy, zoo's latest addition, a five-foot, five-inch baby giraffe, comes out with its mother to see and be seen by zoo visitors

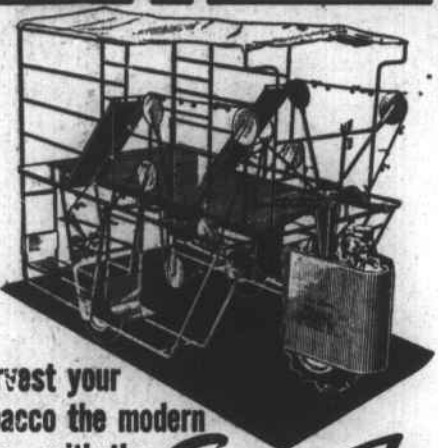
Conducts Services



The Rev. Coit Troutman, pastor of Westover Baptist Church, Charlotte, is conducting meetings this week in the First Baptist Church, Beaufort.

The meetings start each night at 7:30. The revival series started Sunday with both meetings being conducted by the Rev. W. T. Roberson, pastor. Mr. Troutman conducted the service last night and will be here through the coming Sunday night.

Goodbye to backaches



Harvest your tobacco the modern way—with the *Silent Flame* TOBACCO HARVESTER

When you harvest your tobacco the modern Silent Flame way you can forget about the hard back bending job of stooping to prime tobacco. Everybody rides on the Silent Flame tobacco harvester. You can ride in the shade, too. FOR MORE INFORMATION SEE US TODAY.

NEWPORT TRACTOR & EQUIPMENT CO. Phone 237-7 Newport, N. C.

Economy Size Auto



Auto which goes 93 miles on a gallon of gas is the smallest Italian car on market. Manufacturer of tiny car with rear engine and front door is ISO of Milan.

Course Offered On Retirement

Omaha (AP)—An ex-university president is ready to help you face retirement. His correspondence course is called "planned maturity."

When Rowland Haynes retired as president of the University of Omaha in 1948, he wasn't sure what he would do.

"I never was much good at fish-

ing," he admitted.

But Haynes, now 75 and a widower living with a son-in-law and daughter here, found happiness. In six years, in addition to doing a little teaching "for relaxation," he planned his course in what he calls "super adult education."

"Someone has said that retirement is about the severest shock the human organism can sustain. But it doesn't have to be a shock if you plan ahead for it."

Three out of four U. S. auto accidents occur on dry pavements in clear weather.

CENTURY CLUB



STRAIGHT BOURBON WHISKEY

THIS WHISKEY IS 4 YEARS OLD - 86 PROOF NATIONAL DISTILLERS PRODUCTS CORPORATION, N. Y.

2.30
7.
\$3.65
4/16 ET.



Sleep cool... get a new CARRIER ROOM AIR CONDITIONER



See the new slim silhouette. The new Carrier scarcely extends beyond the sill, yet it cools, filters, dehumidifies and ventilates. Dependable? It's built by the people who know air conditioning best!



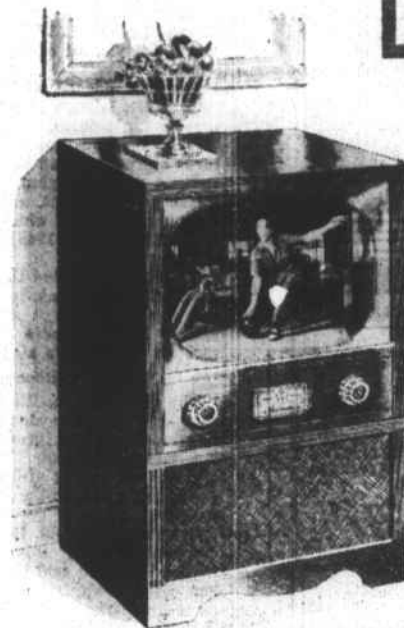
LEONARD'S METAL SHOP Phone 6-3228

2006 Bridges St. Morehead City

Register NOW!

You May Be the Lucky Winner of the **FREE 21" TV** To Be Awarded During Our **GRAND OPENING**

NOTHING TO BUY You Don't Have to Be Present to Win COME IN AND REGISTER!



NEW ALL-WAVE TUNER ADDS 20% MORE SELECTIVITY FOR UHF RECEPTION!

21-INCH EASY-VISION FOR JUST **\$249.95**

Model 21M1600 — Hoffman's finest table model value with new Gamma 3 chassis, phono jack and tone control. In mahogany or lined oak finish with matching base available.

Prices include Fed. tax and warranties

HAM'S TV SERVICE

512 ARENDELL MOREHEAD CITY PHONE 6-4733 Located Next Door to Cherry's Market

On WNCT-TV This Week

SEE THESE WONDERFUL SHOWS ON CHANNEL 9

WEDNESDAY, APRIL 21, 1954

- 7:00—Morning Show, CBS
- 11:30—Robert Q. Lewis, CBS
- 12:00—News
- 12:30—Betty White Show, NBC
- 2:00—Double Feature Theatre
- 4:00—Woman With a Past
- 4:15—Music With a Fashion
- 4:30—On Your Account, NBC
- 5:00—Cactus Jim
- 6:00—News
- 6:30—Riders of Purple Sage
- 6:45—Farm Facts
- 7:00—Kit Carson
- 7:30—Douglas Edwards, CBS
- 7:45—Perry Como, CBS
- 8:00—Paul Winchell Show, NBC
- 8:30—Ford Theatre
- 9:00—Badge 714
- 9:30—The Unexpected
- 10:00—Pabst Fights, CBS
- 10:45—Greatest Fights of the Century
- 11:00—News, Weather and Sports

THURSDAY, APRIL 22, 1954

- 7:00—Morning Show, CBS
- 11:30—Robert Q. Lewis, CBS
- 12:00—News
- 12:30—Betty White Show, NBC
- 1:00—The Big Question
- 1:30—Good Cooking
- 2:00—Featurette
- 2:30—Nancy Carter's Cookbook
- 3:00—The Big Payoff
- 3:30—Melody Matinee
- 4:00—Woman With a Past
- 4:15—Music With a Fashion
- 4:30—On Your Account, NBC
- 5:00—Cactus Jim
- 6:00—News
- 6:30—Circle C Jamboree
- 6:45—Farm Facts
- 7:00—Lone Ranger
- 7:30—Douglas Edwards, CBS
- 7:45—Yesterday's News Reel
- 8:00—You Bet Your Life, NBC
- 8:30—Four Star Playhouse, CBS
- 9:00—I Led Three Lives

- 9:30—Story Theatre
- 10:00—Topper, CBS
- 10:30—Place the Fact, CBS
- 11:00—President Eisenhower
- 11:30—News, Weather and Sports

FRIDAY, APRIL 23, 1954

- 7:00—Morning show, CBS
- 10:00—Jack Paar Show, CBS
- 11:30—Robert Q. Lewis, CBS
- 12:00—News
- 12:30—Betty White Show, NBC
- 1:00—The Big Question
- 1:30—Good Cooking
- 2:00—Double Feature Theatre
- 4:00—Woman With a Past
- 4:15—Music With a Fashion
- 4:30—On Your Account, NBC
- 5:00—Cactus Jim
- 6:00—News
- 6:30—Riders of Purple Sage
- 6:45—Farm Facts
- 7:00—Circle C Jamboree
- 7:15—Jewel Box Jamboree
- 7:30—Doug Edwards, CBS
- 7:45—Perry Como, CBS
- 8:00—Boston Blackie
- 8:30—Pepsi-Cola Playhouse, ABC
- 9:00—Life with Reilly, NBC
- 9:30—Cavalcade of America, ABC
- 10:00—Cavalcade of Sports, NBC
- 10:45—Goldsboro Racing
- 10:50—Beat the Experts
- 11:00—News, Weather, Sports

SATURDAY, APRIL 24, 1954

- 11:00—Winky, Dinky and You, CBS
- 11:30—Rod Brown Rocket Rangers, CBS

RCA — Hallicrafter — G.E. TELEVISION SETS **BEAUFORT PLUMBING & SUPPLY CO.**

Your Hot Point Dealer Phone 2-4696 396 Live Oak St. Beaufort

SUNDAY, APRIL 25, 1954

- 1:00—World News in Review
- 1:15—For You
- 1:30—Carolina's TV Reporter
- 1:45—This is Your State
- 2:00—Family Theatre
- 3:00—American Forum of the Air, NBC
- 3:30—Your Faith Is Power
- 4:00—Adventure, CBS
- 5:00—American Week, CBS
- 5:30—You Are There
- 6:00—Life With Father, CBS
- 6:30—Private Secretary, CBS
- 7:00—Toast of the Town, CBS
- 8:00—Fred Waring, CBS
- 8:30—Break the Bank, ABC
- 9:00—The Web, CBS
- 9:30—Amos and Andy
- 10:00—Letters to Loretta, NBC
- 10:30—Favorite Story
- 11:00—News

This TV Log is Brought to You Each Week by the Television Dealers Listed Below



with exclusive **STROMBERG-CARLSON PANORAMIC VISION***

THE PANAVUE—21-inch Panoramic Vision picture. Permanent magnet speaker. Tone control. Built-in antenna. Phono jack. Compact table cabinet of selected mahogany veneer as low as \$229.95**

Yes—there is more to see on PANORAMIC VISION, because this wide-view screen hides none of the picture. And more can see, because PANORAMIC VISION gives you the widest viewing angle in TV.

Come in and see this thrilling picture today. Let us tell you about the many other advanced features that make Stromberg-Carlson a top performer—on UHF or VHF—even in fringe areas. Satisfy yourself that Stromberg-Carlson is your soundest TV buy. We have a wide range of models for your selection.

*Patent applied for **Includes excise tax and warranty

"There is nothing finer than a **STROMBERG-CARLSON.**"

CARTERET GAS CO., INC.

Morehead City 111 S. 8th Street Phone 6-4044

CITY APPLIANCE & FURNITURE CO.

Stromberg-Carlson & Sylvania TV Sets 523 Front St. Beaufort, N. C. Phone 2-3251

HAMILTON FURNITURE COMPANY

Motorola Zenith R.C.A. Bendix C.B.S. Columbia Television Sets 505 Live Oak St. Beaufort, N. C. Phone 2-7201

BLANCHARD'S ELECTRIC SERVICE

G.E. Television with Black-Daylite or Ultra-Vision Low Down Payment and Convenient Terms 914 Arendell St. Morehead City Phone 6-2326

HALL'S RADIO & TV SERVICE

Zenith & Sylvania in Morehead City Zenith — Admiral — Motorola Sylvania — R.C.A. — Hallicrafters in Havelock Morehead City