

About 75 Americans go blind each day.

Amateurs Buy Most Of Paint on Market

By DAVID G. BAREUTHER
Do-it-yourself handymen — and women — use so much paint in today's race for keeping homes up-to-date that it is hard for some people to believe that amateurs buy

three-fourths of all the paint being manufactured.
In spite of all the paint used by industry, such as automobiles and furniture and toys, and in spite of all the new homes that are built each year and painted by professionals, the do-it-yourself man is still customer No. 1 for the paint makers.

One of the biggest reasons for this may be the number of special paints that have been invented. You can get paints capable of standing high temperatures on stoves and radiators, hard wearing deck enamels for floors, dampness defying cement paints for basement walls, paints that flow on without showing brush marks and odorless paints of almost all kinds.
Recently a new liquid procelain enamel for washing machines, dryers, refrigerators and other home appliances was announced in 16 colors, making it easy for the handy housewife to dress up drab and worn fixtures of that type and make them match her decorating scheme.

The right paint for the right surface has suddenly become very important. Where is it best to use an oil-base, and alkyd or a rubber-base paint? All three of those types in flat paint for walls will dry to approximately the same finish, but there are various individual differences to consider when you make a selection.

You'd think that most people would say "Paint's paint; let's go," and wouldn't care to master such technicalities as oil vs alkyd vs rubber. We thought so until we asked an authority, Douglas C. Arnold. He differed with us.

"Everybody respects rules," he said. "There are rules for baseball, for bridge, for painting. Tell anybody the right way and they'll play the game for their good." As head of one of the oldest paint making organizations (Keystone Paint & Varnish), he ought to know paint rules.

"For all walls but a kitchen or

bathroom," he said, "a flat finish is preferred. A high quality oil-base paint that is properly formulated will give splendid service, look handsome and prove perfectly washable. It should dry in three to four hours, although it may take a couple of weeks or so to set perfectly hard."
"An alkyd paint, made with a synthetic resin instead of linseed oil, is no better than a good oil-base finish but is certainly superior to a poorly formulated flat oil finish. It dries in about two hours and sets to a hard finish in a week or two."
"Both types dry fast in hot weather, slow on cold or damp days."
"Rubber-base finishes have a slight advantage in that they flow on the wall more easily than other paints and can be thinned with water. Brushes and equipment can be cleaned with water instead of turpentine or other solvents. Although rubber-base paints dry in about 20 minutes, they take 30 days to cure completely and it is not advisable to wash them or hit them with furniture before that time."

Preparation of surfaces is the same for any paint. Cracks and other damages should be repaired. Roughnesses should be sanded smooth. Dirt or soot should be thoroughly wiped off with a clean rag or dry mop and any grease must be washed off with a good detergent.

Movable Laundry Tubs Help Many Homemakers
With the popular appeal of automatic laundry equipment, many new homes are being built without adequate laundry tubs. The solution, many homemakers find, is to provide galvanized steel laundry tub sets.
These consist of one or two spacious tubs mounted on movable stands so that they may be moved out of the way after the laundry is done.
All tubs have convenient drain outlets, so they do not have to be lifted at any time.
Galvanized steel baskets have many uses in home laundering. Between laundry days they may be used for storing soiled clothing, and laundry may be soaked in them. They are also handy for carrying laundry to the clothes line and for holding clothes and other items to be ironed.

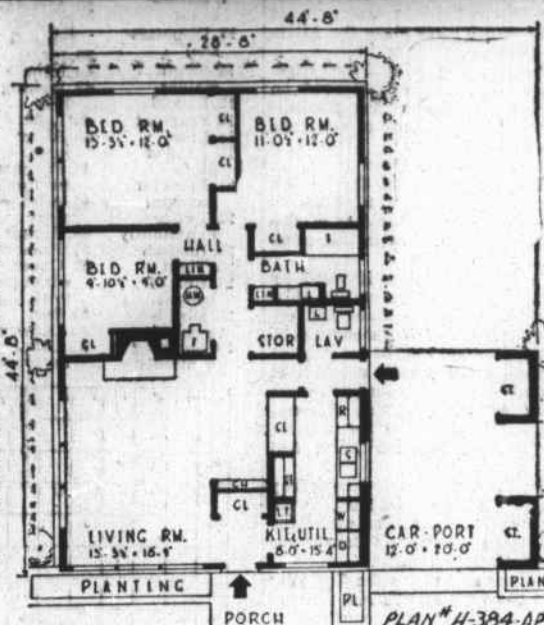
Ready Mixed Concrete
"Just-Right" Mixture Ready-to-Pour
Specify the concrete mixture you need... and we'll deliver right to the job whenever you say! No mess. No fuss. Save time and money. Phone for estimate.

LONG CONCRETE SUPPLY
Highway West
MOREHEAD CITY
PHONE 6-4889

HOMES FOR AMERICANS



A broad low-pitched roof, extending over the car port, gives this house a distinctive appearance as well as adding height to the living room. Vertical siding at the front door offsets any tendency toward a squat look. Planned without a basement, the house has an abundance of closets and storage spaces, including two in the car port for garden accessories. An extra lavatory opens off the side hall at the rear of the kitchen. Heater and hot water supply are located in an adequate closet adjoining the fireplace chimney. This is plan H-384AP by the Homograft Co., 11711 East Eight Mile Rd., East Detroit, Mich. The house covers 1,281 square feet and contains 13,447 cubic feet, convenient figures for estimating local construction costs. A liberal use of brick or stone veneer is suggested.



Pail Filled with Gifts Will Please Homeowners

Want a novel gift to present to the young couple who just moved into their new home? Here's a novel idea: Fill a galvanized steel pail with soap, liquid cleaners, furniture polish, sponge, scrub brush and other cleaning aids.
Decorate the pail with crepe paper and bright ribbon, and you have an inexpensive and highly useful housewarming gift.
The pail will give years of services and be a lasting reminder of your ingenuity and thoughtfulness.

There's safety in numbers, so paint a home's address on garbage cans and their covers to deter loss. Paint sticks well to galvanized steel cans if the areas to be painted are first cleaned of grease and grime. This may be done with a cloth which has been dampened with a mild vinegar and water solution.

Tub for Pups

If the family dog has just delivered a litter of pups, you may be wondering where to put them at night and other times when they are not next to "Mom." Try this idea: Place several sheets of old newspaper at the bottom of a galvanized steel tub. The tub provides a bedding area that is free of drafts and is easy to clean. Moreover, a laundry tub won't leak.

MADE-TO-MEASURE WROUGHT IRON RAILINGS & COLUMNS
Plain and fancy designs. All materials used are solid iron with rust resistant finish.
—FREE ESTIMATES—
MICRO MACHINE CO.
Phone 6-4919
Located 6 Miles West of Morehead City, Highway 24

Paint, Oil Rags Should Be Put in Metal Pail
Oily rags and those used in painting are fire hazards when thrown into uncovered piles and forgotten about until the next time they are needed. Spontaneous ignition can result in such instances.
Wiping rags may be kept safely in the home by placing them in a covered galvanized steel pail, such as a refuse container.
Then, if spontaneous ignition should occur, it will be confined to the fire-safe interior of the can.

WE MAKE ANYTHING YOU NEED IN SHEET METAL
Gutter and Downspout
Marine Fuel Tanks
Made to Your Specification
Byrd's Metal Works
103 N. 28th St. - Morehead City
Phone 6-3328

VAN NISS AND SUN-SASH
LOUVERED WINDOWS
They're Better
Any Way You Figure It...
NEW HOMES • REMODELING
KITCHENS • BATHROOMS
PORCHES • PATIOS
BREEZEWAYS • COMMERCIAL
RUSSELL'S GLASS SHOP
903 SHEPARD ST. PHONE 6-4744 MOREHEAD CITY, N. C.

Thank You
For your splendid attendance at our Grand Opening.
Please drop in again soon...
You're always welcome.
B & M BUILDERS SUPPLY
BONNER ST. Phone 6-4603 MOREHEAD CITY, N. C.

See Us For Concrete Blocks

● SAND
● GRAVEL
● CEMENT
● MORTAR CEMENT
● WATERPROOFING-PAINT
Concrete Steps
Septic Tank Lids
Cement Drain Tile
Ornamental Products
Morehead Block & Tile Co., Inc.
Highway 70 West
Phone 6-3970

PROMPT SERVICE

Clogged sinks and leaky faucets slow down kitchen operations... Have our licensed plumbers right what's wrong TODAY!
Just call 2-4696.
BEAUFORT Plumbing & Supply Co.
306 LIVE OAK ST.
BEAUFORT, N. C.

EFFECTIVE IMMEDIATELY
NO INSTALLATION CHARGE
ON **Pyrofax** GAS SERVICE
Complete Pyrofax Bottled Gas Service with Two (2) 100-Pound Cylinders Filled with Pyrofax Gas—GAS PAID FOR—No Deposit—No Meter—Installed in Your Home—Ready-to-Cook—For Only **\$24.50**
Carteret County's Lowest Cost Complete Gas Service — Quality Controlled Pyrofax Gas—Economical—Every Cylinder Guaranteed Weight.
ALSO—1 CYLINDER INSTALLATION (Including Gas) \$14.89
CARTERET GAS CO., INC.
Call Us Today — Also a Complete Line of Appliances
109 S. 8TH ST. PHONE 6-4044 MOREHEAD CITY

Century Club

6 years old
\$2.40 Pint
\$3.80
STRAIGHT BOURBON WHISKEY • 56 PROOF
NATIONAL DISTILLERS PRODUCTS CORPORATION, N. Y.

HERE'S WHY WE ADVERTISE
That You Can SAVE AND SAVE at
General Wholesale Building Supply Co. OF NEW BERN
LOOK AT THESE PRICES and COMPARE WITH MAIL ORDER HOUSES, DISTRIBUTORS, OR ANYBODY ELSE—
1/4 IN. FIR PLYWOOD 11 1/2¢ Per ft.
8 D UP—COMMON NAILS (U. S. STEEL) \$8.85 KEG
FLUSH DOOR 2-8x6-8 \$7.95
DURA-SEAL Weather Stripped WINDOW UNITS 2-4x2-2 \$11.67
U.S.G. SHEET ROCK 3/4" Recessed \$44.95 Per M
RUBBEROID THICK BUTT SHINGLES \$5.65 Sq
DAVIS OUTSIDE READY MIXED PAINT \$4.49 In 1 Galn.
CROFT STEEL MODULAR WINDOWS from \$7.39
U.S.G. SHEETROCK 1/4 IN. \$39.95 Per M
90° SLATE ROOFING GREEN, RED or BLACK \$2.69 Per M
BRASS PASSAGE LOCK SETS \$1.82
BRASS PASSAGE LOCK SETS \$1.82
FAIRBANKS-MORSE WATER SYSTEM (250 Gal. PISTON TYPE) \$71.66
Also Hundreds of Other Items Such as — FIR LUMBER, FIR DOOR FRAMES, Fiberglass Insulation, Tile Board, Mortar Mix, Tension Screens, Screen Wire — All at Wholesale Prices to You!
General Wholesale Building Supply Co
OF NEW BERN
Building Supply Center 1 1/2 Miles From City Limits On Highway 70 West