

One estimate is that there are 44 1/2 million residential bathrooms in the United States, one third of which are more than 40 years old.



You'll be thankful for buildings of sturdy CONCRETE

CONCRETE is sturdy—economical. Its initial cost is low and there's practically no maintenance expense. Concrete is fireproof and vermin-proof. It lasts a lifetime.

Experienced North Carolinians choose concrete for greater safety and economy.

Plan to build of long-lasting, storm-resistant concrete now. Write for the free illustrated booklet on permanent farm construction.

PORTLAND CEMENT ASSOCIATION
State Planners Bank Bldg., Richmond 19
A national organization to improve and extend the uses of concrete... through scientific research and engineering field work

Never Underestimate Value of Home Hints

By VIVIAN BROWN
AP Newsfeatures Writer

Never underestimate the value of a household hint. Although no man will admit it could have happened, Mrs. Caveoman probably said to Mrs. Outspace on some dark and dreary day "let's rub two sticks together and see what happens." And so by friction they whipped up a little thing called fire.

It's been just as simple as that through the ages, and so we have gadgets and all sorts of mechanical contraptions that make life easier every day to the week. When Maifa decided that two forks help make a lovely whipping mixture, some man manufactured an egg beater. And when she used a knife to smooth out her pastry, man broadened it slightly and came up with a spatula.

The household hint is always a useful tidbit in homemaking, whether it tells how to remove a coffee stain or how to deodorize the family pet.

One firm recognizing this potential instituted a Homemakers Forum on radio, asking and giving prizes for just such "trivia." The first week some 30,000 letters

floored them. The next week the mail doubled, they claim.

Many of the hints showed real imagination and inventiveness, according to the sponsors. One woman who burned out her double boiler constantly, put two or three marbles in the double boiler before turning on the fire. When the water gets low, the clanging of the marbles warns her.

Another places a glass bowl over the family clock, she says, to soften the ticking, but it still permits her to see the time. (She doesn't explain what happens when the alarm goes off).

Other helpful hints that have been offered by listeners go like this . . .

String subway or bus tokens on a safety pin so they'll be handy . . .

Sharpen scissors by cutting a few strips of sand paper . . .

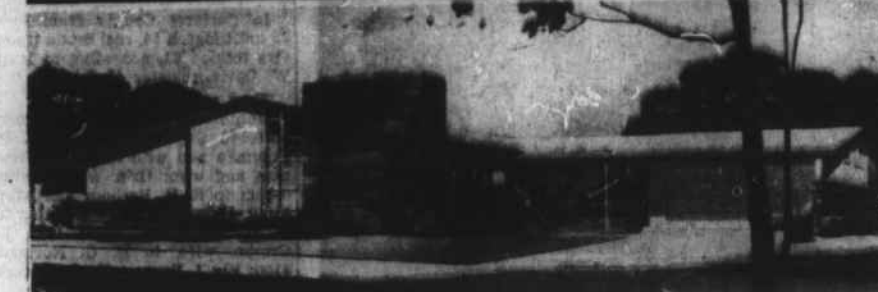
Keep plants fresh while a house is closed by placing in a tub as many bricks as there are flower pots. Put enough water in the tub to cover the bricks and stand a plant on each brick. The bricks absorb enough water to keep the plants in good condition for some time.

If you have trouble identifying small and large sheets, sew a small red initial in the corners of all bed sheets — "S" on the small sheets and "L" on the large ones.

Snow shovelers will adore this one which is supposed to work: To make snow shoveling easier, melt paraffin and coat the shovel with it. The snow will slide off without sticking to the shovel.

White tissue paper from old gifts comes in handy too, according to the save-it girls. As a lint-free

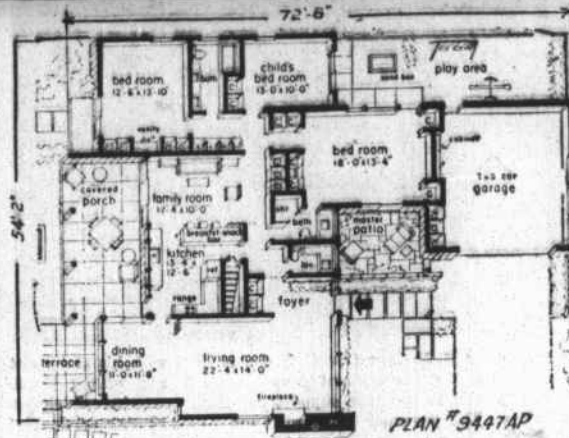
HOMES FOR AMERICANS



A big chimney, flanked by a cathedral style window on one side, rising to the rafters of a high-ceiling living room, and by stone wall plant boxes on the other side, distinguishes this house.

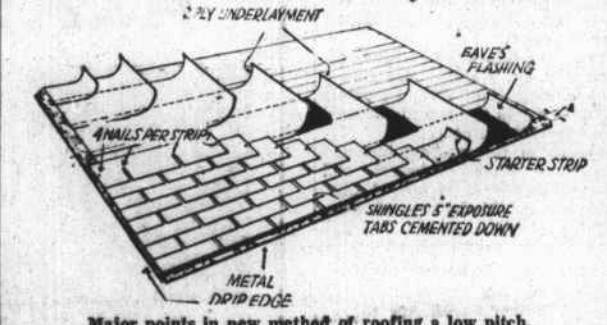
Indoor-outdoor living is exploited in the plan with a series of patios and porches. Sliding glass panels merge several rooms with the outdoors.

A family room for television, hobbies and other recreation adjoins the kitchen. This is Plan 944AP by Rudolph A. Matern, architect, 90-04 161st St., Jamaica 2, N. Y. The house covers 1,884 square feet excluding porches and two-car garage.



MADE-TO-MEASURE WROUGHT IRON RAILINGS & COLUMNS
Plain and fancy designs. All materials used are solid iron with rust resistant finish.
—FREE ESTIMATES—
MICRO MACHINE CO.
Phone 6-4919
Located 6 Miles West of Morehead City, Highway 24

Builders Forecast Flatter Roofs, Wide Overhangs



Major points in new method of roofing a low pitch.

By DAVID G. BAREUTHER
Roofs are going to become flatter. This is not a style note from the Paris of the home builders. It is just an obvious conclusion, warranted by the development of a new method for using asphalt shingles.

Changes in house design have been brought about before by new building materials and new ideas for using them. You can cite the window wall, made practicable in northern climates by vacuum-sealed double glass. And there is the trend to wide roof overhangs, which at least was aided and abetted by the need for shade to increase the efficiency of summer cooling systems.

The reason you can now virtually bet on gables becoming squatter—maybe disappearing in an almost flat shed slope—is that your money will be saved if you're paying for the building job.

Architects have been flirting for years with what they call "flat tops." The structural lumber and roofing material required to build a pitched and gabled roof have been obvious extravagances. So in recent years, you have seen the slopes of roofs on new houses becoming steadily lower.

But when roof slopes got down to a drop of less than four inches per horizontal foot, economy seemed to end. Economical shingles could no longer be used, because of the problem of water backing up under them on pitches of less than four inches. You could build a flat roof, or one with a pitch of only two inches or so, but you had to use built-up roofing or other systems.

Well, a lot of people didn't care much for the looks of black roll roofing on a house—especially when pitched roofs blossomed out in blue, red, green, pink and other hues. So the daring young architects were more or less saddled with gabled roofs.

Now it turns out that you can build a rain-tight, wind-tight roof with a pitch as low as two inches per foot, and use popular asphalt shingles if you do it in the right way. First you attach a metal drip edge along the eaves and along the rakes of your roof. Then you cover the roof deck with two layers of No. 15 asphalt saturated felt.

You start this underlayment with a 19-inch starter course laid along the eaves to overlap the metal drip edge. The starter course is then covered with quick-setting asphalt cement and a full 36-inch width of the felt is then laid to overlap the starter course completely.

From then on, each 36-inch width of felt overlaps the previous strip by 19 inches and is cemented to the previous strip. All of this material is further secured to the roof deck by 3/4-inch roofing nails—with only enough nails used to hold

duster, it makes a good cleaner for windows.
Anyone can add to this list. Every day someone evolves a new household hint. Remember to use them to keep household chores at a minimum.

WE MAKE ANYTHING YOU NEED IN SHEET METAL
Gutter and Downspout
Marine Fuel Tanks
Made to Your Specification
Byrd's Metal Works
103 N. 28th St. - Morehead City
Phone 6-3328

VAN NESS AND SUN-SASH
LOUVERED WINDOWS
They're Better
Any Way You Figure It . . .
NEW HOMES • REMODELING
KITCHENS • BATHROOMS
PORCHES • PATIOS
BREEZEWAYS • COMMERCIAL
RUSSELL'S GLASS SHOP
903 SHEPARD ST. PHONE 6-4744 MOREHEAD CITY, N. C.

Tool Tips
Prevent a table saw from turning while you change blades by boring a hole in the saw disc near the cutting edge and inserting a metal rod as an anchor. The American Builder, trade publication, recommends this as a safety measure.

Call Carl
FOR
ELECTRIC CONTRACTING
AND REPAIRS
HEATING & MOTOR
REPAIRS
Hatsell's Electric Company
Highland Park
BEAUFORT, N. C.
Phone 2-4786 or 2-5286

LET US SERVE YOU
OUR CLIENTS LIKE OUR SERVICE . . . WE BELIEVE YOU WILL, TOO.
Telephone 6-4000
JOHN L. CRUMP
INSUROR — REALTOR
825 Arendell St. • Morehead City

ERYSIPELAS symptoms stopped in feeder pigs with ANCHOR Ery-mune
Erysipelas-Immunity
reports Jack Viers, Maxwell, Iowa
"Since using Anchor Ery-mune, the erysipelas symptoms I used to have in my feeder pigs have been stopped. I prefer it because it doesn't bring the live germ on my place."
"I have used Anchor True-Vac for hog cholera for two years without experiencing the necro and scours my hogs used to get from other methods. I believe these products are among the greatest things that have been made available to hog raisers because anyone can do the vaccinating, save money, and know what product he is administering."
Ask for TRUE-VAC & ERY-MUNE by name
Roy T. Garner Feed Store
PHONE 266-1 NEWPORT, N. C.

EFFECTIVE IMMEDIATELY
NO INSTALLATION CHARGE
ON **Pyrofax** GAS SERVICE
Complete Pyrofax Bottled Gas Service with Two (2) 100-Pound Cylinders Filled with Pyrofax Gas—GAS PAID FOR—No Deposit—No Meter—Installed in Your Home—Ready-to-Cook—For Only **\$24.50**
Carteret County's Lowest Cost Complete Gas Service — Quality Controlled Pyrofax Gas—Economical—Every Cylinder Guaranteed Weight.
ALSO—1 CYLINDER INSTALLATION (Including Gas) \$14.89
CARTERET GAS CO., INC.
Call Us Today — Also a Complete Line of Appliances
109 S. 8TH ST. PHONE 6-4044 MOREHEAD CITY

Let us install a superior plumbing system in the beginning . . . you'll cut down on costly repairs in the end! When our licensed plumbers do the job, you KNOW it's done right!
Beaufort Plumbing & Supply Co.
306 Live Oak St. Beaufort, N. C.
PHONE 2-4696

Ready Mixed Concrete
... CUTS DOWN WASTE
Stop wasting materials by on-the-job mixing! Tell us your specifications and we'll deliver the right amount of the right concrete mix right on time!
Long Concrete Supply
Highway 70 West Morehead City
Phone 6-4859

See Us For **Concrete Blocks**
● SAND
● GRAVEL
● CEMENT
● MORTAR CEMENT
● WATERPROOFING-PAINT
Concrete Steps
Septic Tank Lids
Cement Drain Tile
Ornamental Products
Morehead Block & Tile Co., Inc.
Highway 70 West
Phone 6-8979

NO BULL!
WE HAVE LOW, LOW WHOLESALE PRICES
ON ALL TYPES OF BUILDING MATERIALS
YOU SAVE A LOTI . . .
... WE MAKE A LITTLE!
Low Prices on products YOU KNOW!
No Seconds! . . . No Off Brands! No Discontinued Merchandise! We Sell FIRST QUALITY Building Materials and at WHOLESALE PRICES. There's No "Bull" about our prices. Come in and see for yourself how much YOU SAVE!
OVER 40,000 SQUARE FEET
FILLED WITH A COMPLETE STOCK OF ALL TYPES OF BUILDING MATERIALS
General Wholesale Building Supply Co.
OF NEW BERN
At Building Supply Center — 1 1/2 Miles West of City Limits On US Highway 70 — Dial 5138

