

Firm Receives Safety Award

The Carteret Ice and Coal Co., Morehead City, has received a safety award from the Department of Labor in Raleigh for its outstanding work in accident prevention during 1954.

Frank Crane, labor commissioner, in his letter to L. D. Gore, president of the company, stated that not all of the benefits of the safety work would ever be known.

He said prevention of accidents curtails economic waste, alleviates human misery and suffering, and the plant is a better place to work as a result of the successful accident prevention work.

Except in 1952, when a minor accident occurred, Carteret Ice and Coal has won a safety award every year since 1946.

In New York Some Folks 'Buy' Their Apartment

By DAVID G. BAREUTHER

Everyone who buys a new home does not buy a house—some buy an apartment in a cooperatively owned building. Of course, they do not actually own the apartment they occupy. They own stock in a corporation which owns the building. This entitles them to occupy and maintain their apartment—so it amounts to about the same as owning the rooms.

However, lots of people would rather establish their homes in or near the heart of a crowded city, where they can be within walking distance or a short taxi ride from their jobs, than travel a long distance for the pleasures of lawn mowing, snow shovelling and falling off painters' ladders.

So the other day we took a look at how the other half lives, visiting a swank new cooperative project on New York's Fifth Avenue, directly opposite the Metropolitan Museum of Art. We found a very fine apartment that compares favorably in space with a nice house in the country—7 rooms, 3 baths, extra lavatory and a private porch in the form of a roof terrace overlooking Central Park.

The price for this apartment is \$26,325 and the estimated total annual charge, including maintenance and other fixed expenses, is \$5,872.50.

Now of course you can find cooperative apartments for much less money. In the past 10 years many cooperative apartment buildings were erected for the average man with the aid of subsidies or FHA assistance. In each case the advantages of real estate tax deductions on your income tax return were stressed.

So in this luxury building, where income taxes are no joke for the apartment dwellers, the salesmen point out that if you are in the 50 per cent tax bracket (if, he says) your deduction for real estate taxes will amount to \$1,822.50 yearly, which leaves you only \$337.

50 for an actual monthly charge to live there.

But luxury certainly has changed its meaning in the past generation. Back in the 1920s, before the 1½-room apartment had been invented, 7-room apartments were ordinary. Sometimes you had to enter through the dining room and apologize to the sauerkraut and pig knucklers fans for inspecting their quarters at that hour—but John Markle, the coal man, was then living in a 40-room Fifth Avenue apartment, all alone—except for 14 servants.

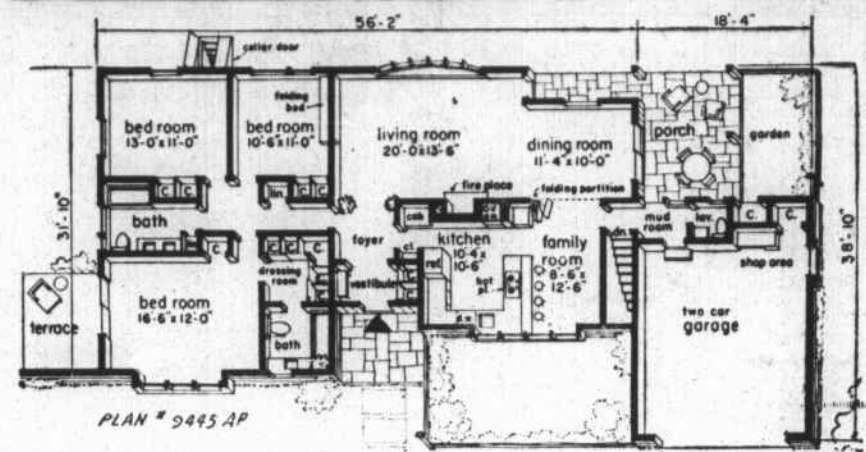
We remember having printed an item in the early 1930s when documents in the county clerk's office showed that a famous banker paid \$350,000 for his cooperative apartment. Although the price had become a matter of public record, he was furious when he read the item and called up to ask if we didn't know men were selling apples on the street.

And Arthur Brisbane, the famous editor and real estate speculator, had 32 rooms on the top two floors of another Fifth Avenue building. His living room was 80 feet long, 30 feet wide and two stories high, with fireplaces at each end big enough to barbecue a Texas steer whole in each one of them, but Brisbane never was that informal.

The biggest apartment we ever saw was that of Mrs. Marjorie Post Close Hutton (later Davies)—totaling 66 rooms. She was so much in love with the Hutton mansion on upper Fifth Ave. that she couldn't bear the thought of losing it when skyrocketing taxes dictated the construction of an apartment house. So she had the entire mansion reproduced, exact to every detail, on the top three floors of the new building.

What became of such luxury homes? Times changed. And architects had many a headache trying to cut such apartments down to size.

HOMES FOR AMERICANS



PLAN # 9445 AP

Special features can make a house more livable. Here a family room adjoins the kitchen with a folding partition separating it from dining room. A built-in oven wastes no space when vented through the fireplace chimney. A mud room

and adjoining lavatory are convenient from the garden porch. Garage has space for a work bench. Entrance vestibule opens into a foyer. Master bedroom has a spacious dressing room adjoining private bath. An outdoor closet pro-

vides storage for garden tools. Sliding glass doors merge dining room and porch. This is plan 9445AP by Rudolph A. Matern, architect, 90-04 161st St., Jamaica 2, N.Y. The house covers 1,613 square feet, without garage and porch.

Do's and Don'ts of Home Repair

SOLDERING ELECTRIC WIRES

Do... sandpaper spliced wire connections to remove all grease and dirt before soldering.

Do... apply a thin coat of non-acid flux to the entire surface of the splice, being certain that the



keep the tip of the soldering iron tinned by applying a coat of solder to it before every new job.

flux gets between the crevices which are formed when the wires are joined.

Do... keep the soldering iron (the tip of which is really copper) hot enough to melt the solder but never so hot that it gets red.

Do... hold the iron against the underside of the splice, holding the solder against the topside... and move the iron slowly back and forth as soon as the solder begins to melt.

Do... before every new job, "tin" the iron, which consists of filing the faces of the tip lightly,

heating the iron and then coating the tip with a thin layer of solder.

Don't... forget that an acid flux or acidore solder should not be used on electrical connections because of corrosive after-effects.

Don't... rest a hot soldering iron on any inflammable surface. Buy a small metal stand or drive 2 large nails into a piece of wood to form an "X" on which the iron can be rested.

Don't... think that soldering takes the place of a good splice; it is merely a part of it and will not be effective unless the wires have been securely joined.

Don't... neglect to cover the soldered joint with rubber and friction tape or with plastic electrical tape.

Don't... overlook the possibility of using strip solder, which is wound around the joint and then melted with a lighted candle.

VAN NESS AND SUN-SASH

LOUVERED WINDOWS
They're Better
Any Way You Figure It...
NEW HOMES • REMODELING
KITCHENS • BATHROOMS
PORCHES • PATIOS
BREEZEWAYS • COMMERCIAL

RUSSELL'S GLASS SHOP
903 SHEPARD ST. PHONE 6-4744 MOREHEAD CITY, N. C.

Ready Mixed Concrete

On-the-Dot Deliveries To the Job

Name the time, the place and the required cement mixture... and you can count on us to deliver as ordered... at a saving!

LONG CONCRETE SUPPLY
Highway West
MOREHEAD CITY
PHONE 6-4859

See Us For Concrete Blocks

**SAND
GRAVEL
CEMENT
MORTAR CEMENT
WATERPROOFING-PAINT**

**Concrete Steps
Septic Tank Lids
Cement Drain Tile
Ornamental Products**

Morehead Block & Tile Co., Inc.
Highway 70 West
Phone 6-3970

Get Right Spray to Rid Your Garden of Pests

By ROBERT SCHMIDT

Chief Announces Gift of Air Horns To Fire Department

B. T. Smith Jr., Newport fire chief, announced today the Southern Railway is making a gift of two air horns to the fire department.

Permission has been obtained from Moses Howard to mount the horns on his garage and use air from his air compressor.

For some time there has been difficulty in hearing the fire siren in the western section of town. At times the wind would be blowing in such a way that the noise would carry far. At other times firemen in that end of town could not hear the alarm.

The telephone company's district manager has promised cooperation in hooking up a line, and Ed Caraway, electrician, is working on a relay so that when the fire siren goes off at the fire station the air horns will blow at the garage.

An additional optional feature would be a manual blowing valve so that the horns could be used for emergencies other than fire. Chief Smith added that the horns were by far the most expensive item in the project and had it not been for the Southern's gift, the whole idea would have had to be discarded.

Help, Police!
Ann Arbor, Mich. (AP)—Robert Davidson made certain of free meals for 10 days. Broke, he borrowed a dime to call police and get a jail sentence after ordering and eating eight cheeseburgers and failing to pay for them.

Every garden plant seems to have its special pest and some of them have more than their share of pests. It is not possible to give specific control information in a short column such as this, but certain principles of control may be emphasized. More effective spray materials are being developed each year but spray materials and labor are expensive and unless used properly and intelligently may be a waste of time and money.

Organic gardeners to the contrary, we are going to have to spray our garden crops if we expect to control most insect and disease pests. In order to carry on a successful spray program we must first know or determine what pest we are trying to control. Is it a disease? Is it a chewing insect like a bean beetle? Or a sucking insect like an aphid? And what sort of damage does it do?

Second, we should know what spray material to use to control the pest and how to apply it to be effective. For example, it would require a fungicide to control plant diseases and this spray would have no effect on insects. Insect sprays would not control diseases. A spray that will control aphids may not control bean beetles or cucumber beetles. It is often necessary to know how and where to apply the spray.

For example, the Mexican bean beetle feeds mostly on the underside of the leaf; therefore, the spray must be directed against the underside of the leaf in order to effectively control it. In order to control aphids the sprays must be applied directly on the insect.

Third, the spray must be applied at the right time. This is very important especially for the control of plant diseases as well as certain insects. A day too late with the spray may mean failure to control the pest.

Fourth, do a thorough job. Good coverage is necessary for effective control. There are many combination spray materials on the market; that is, materials that will control several different pests, both insects and diseases.

These are effective for the control of many pests but are usually rather expensive because while you may be applying the spray for a single pest you are using several unnecessary materials. Your county agent can help you identify the pests that are giving you trouble and can furnish information for controls. Or you may obtain bulletins from the N. C. Agr. Extension Service, Raleigh, N. C.

Woman Driver Sees Drive Disappear Before Her Eye

Detroit (AP)—A driveway that vanished after she backed her car over it gave Mrs. Jesse J. Brewer of suburban St. Clair Shores the surprise of her life.

"It sank slowly," she said, "and didn't stop until a section 20 feet long and 10 feet wide had dropped about six feet."

The driveway is over the city's main sewer interceptor. It was a cave-in.

Farmers around Phoenix, Ariz., boast that they grow 740 watermelons to the acre — three times the national average.



You'll be thankful for buildings of sturdy CONCRETE

CONCRETE is sturdy—economical. Its initial cost is low and there's practically no maintenance expense.

Concrete is fireproof, rotproof and vermin-proof. It lasts a lifetime.

Experienced North Carolinians choose concrete for greater safety and economy.

Plan to build of long-lasting, storm-resistant concrete now. Write for the free illustrated booklet on permanent farm construction.

PORTLAND CEMENT ASSOCIATION
State Plasterers Bank Bldg., Richmond 19
A national organization to improve and extend the uses of concrete... through scientific research and engineering field work

"How Firm a Foundation"
BUILD TO LAST WITH OUR READY-MIX CONCRETE!

**STRENGTH
ECONOMY
DURABILITY**

L & L Coal Company, Inc.
All Grades of Coal • Ready-Mixed Concrete
Sand and Gravel
Phone 2-5181 Broad St. Beaufort, N. C.
E. Stamey Davis, Manager E. Stamey Davis, Jr., Representative

Let Us Termites Proof Your New Construction
We use the finest wood preservative, and guarantee our work against infestation from termites, beetles.

Coastal Termite Control
PHONE 5-9331
Office 311 Cedar St. BEAUFORT, N. C.

Tool Tips

Screws often fail to hold securely when driven into end grain. The American Home magazine suggests drilling a hole through the board to be joined at its end grain and gluing in a dowel as shown here. The screw gets a firm bite and makes a strong joint.

MADE-TO-MEASURE WROUGHT IRON RAILINGS & COLUMNS
Plain and fancy designs. All materials used are solid iron with rust resistant finish.—FREE ESTIMATES—
MICRO MACHINE CO.
Phone 6-4919
Located 6 Miles West of Morehead City, Highway 24

Call Carl
FOR
ELECTRIC CONTRACTING AND REPAIRS
HEATING & MOTOR REPAIRS
Hatsell's Electric Company
Highland Park
BEAUFORT, N. C.
Phone 2-4786 or 2-5286

Adhesive Hooks Aid in Lid Storing

Storing lids and pans in orderly fashion, so the right lid can be matched to the proper pan quickly, is a problem in some old-fashioned kitchens. Modern storage facilities seldom are provided in such kitchens even though a pantry may be attached to the room.

There is an easy way to devise your own pan and lid hanging facilities which is particularly adaptable to a wall in a small pantry. Colorful plastic two-prong hooks, the self-adhering kind can be stuck to a wall so that each supports a lid on the top prong and a pan on the bottom one.

Each hook holds up to 15 pounds and requires no nails, screws, or tools to put up. The plastic hooks actually fasten to the wall by means of their own patented adhesive-coated wood backing.

**EFFECTIVE IMMEDIATELY
NO INSTALLATION CHARGE**

ON Pyrofax GAS SERVICE

Complete Pyrofax Bottled Gas Service with Two (2) 100-Pound Cylinders Filled with Pyrofax Gas—GAS PAID FOR—No Deposit—No Meter—Installed in Your Home—Ready-to-Cook—For Only **\$24.50**

Carteret County's Lowest Cost Complete Gas Service — Quality Controlled Pyrofax Gas—Economical—Every Cylinder Guaranteed Weight.

ALSO—1 CYLINDER INSTALLATION (Including Gas) \$14.99

CARTERET GAS CO., INC
Call Us Today — Also a Complete Line of Appliances
109 S. 8TH ST. PHONE 6-4044 MOREHEAD CITY



NOW... IS THE TIME TO DO YOUR Spring Painting

WE HAVE THE PAINT FOR YOUR EVERY NEED

Davis of Baltimore Paints

SOLD IN THIS AREA FOR OVER 40 YEARS

**FLATS — ENAMELS — GLOSS — SEMI-GLOSS
TRIM — VARNISHES — MASONRY — LATEX RUBBER BASE**

ALL AT WHOLESALE PRICES TO YOU

Outside White... **\$4.49** GAL ★ Inside Flat... **\$2.95** GAL.

COMPARE and SAVE!

General Wholesale Building Supply Co.
OF NEW BERN
At Building Supply Center — 1½ Miles From City Limits on US 70 West — Dial 5138