

Do's and Don't's

By ANDREW C. LANG
YOUR GARDEN HOSE

Do...buy a swivel device for use where the hose is connected to the faucet; it allows the hose to be moved freely without the usual wear and tear at that point.

Don't...leave the hose about when it is not being used; drain it and coil it on a hanger so that it has no abrupt bends in it.

Don't...pull the hose around the corner of the house without checking to see whether it is scraping against the foundation.

Don't...indulge in that very bad habit of smothering the flow of water by kinking the hose sharply at some point along its length.

Don't...forget that when the outside cords of a hose are damaged—but there is no leak—further trouble can be prevented by wrapping the area with plastic or friction tape.

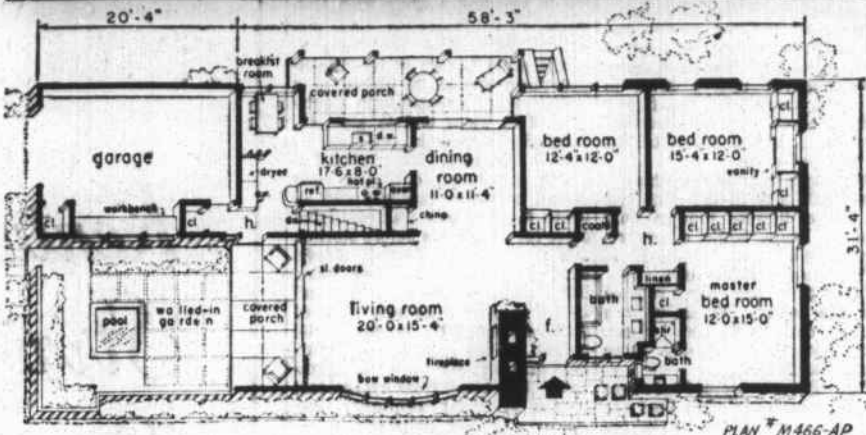
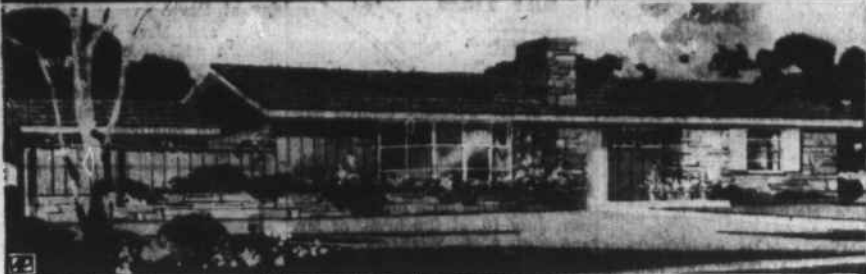
Don't...neglect to change the position of the hose on your lawn occasionally; when left too long in one position, the grass underneath it will suffer.

A typical American family spends 15 per cent of its food budget for milk and milk products which provide 30 per cent of the family's nutritional needs.

Let Us Termites Proof Your New Construction We use the finest wood preservative, and guarantee our work against infestation from termites, beetles.

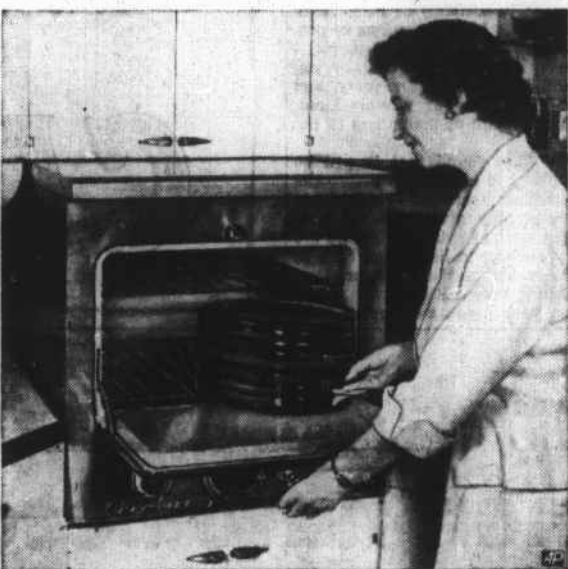
Coastal Termite Control PHONE 2-9331 Office 311 Cedar St. BEAUFORT, N. C.

HOMES FOR AMERICANS



A walled-in garden with pool, adjoining a secluded covered porch joined to the living room by sliding glass doors, merges the outdoors with the indoors in this plan. Another covered dining porch facing the rear garden and a covered entrance porch in front are among other features of this house. An outside basement entrance opens this valuable cellar area for the storage of garden implements. This is plan M466-AP by Rudolph A. Maetrn, architect, 90-04 161st St., Jamaica 2 N. Y. The house covers 1,504 square feet without garage and porches.

Dream Kitchen May be Far Off; New Stove Best Now



Comfortable height of built-in oven unit is demonstrated by Alma Chambers, kitchen expert. She says a new range and cheerful color scheme can bring your dream kitchen nearer than waiting for the invention of robots.

By VIVIAN BROWN
AP Newsfeatures Writer

Are you waiting for that dream kitchen? A magic room where you could push buttons all day long and have little robots do your work?

Well, better settle for what's around now, if you get the chance. It may be years before that kitchen comes to pass. So says charming Alma Chambers whose father invented the first insulated range. She explains:

"A new stove in your kitchen is worth two in that dream catalogue. If the man of the house offers to buy you one he has seen on sale or likes now, don't make the mistake of saying 'I think I'll wait for a skylblue range or an atomic powered one.' Take what you can get right now."

Miss Chambers, who assists her father in business, has seen dream kitchens evolve, but they do take years of planning after those first rough sketches, she says.

Her father was the first to put color and antique copper finish on stoves (in 1929). He has designed a stove too so that panels may be removed and new ones inserted when you're tired of the color or would like to replace white with color.

If you are planning a new home

or organizing your first one, put plenty of thought into your kitchen Miss Chambers advises. She suggests:

"Buy the best equipment you can afford. Instead of investing in all sorts of accessories such as broilers, toasters, deep fat fryers, put that money into your stove. Some stoves come with built-in griddles, too.

Buy a refrigerator that will hold all the frozen foods your family needs. Make sure cabinets are placed strategically so that you do not wear yourself out reaching and bending for things."

Miss Chambers thinks color should be encouraged in the kitchen. It doesn't need to be in all of your appliances, cabinets and utilities, but your color scheme should be inviting she says. It should look so pleasant that even the man of the house will volunteer to whip up a meal. Says Miss Chambers:

"The kitchen is coming into its own again as a meeting place for families and friends. Larger families are putting a lived-in look back in the room, and we'll see bigger and more colorful kitchens going into new homes."

She also sees the day, not far off when we will cook all over the house. There will be barbecue

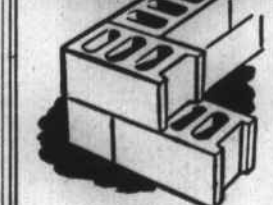
rooms and cooking burners in the family get together room.

Hot plates and burners will be hooked up right in the dining room so that casseroles may be taken right off the burner and put on the table. But these things will not be available at consumer price level for three or four years at least. Miss Chambers reiterates:

"Enjoy whatever you can get now and don't sit around waiting for decentralized cooking. It'll be fun when it gets here and that's the only way to look at it."

See Us For

Concrete Blocks



- SAND
- GRAVEL
- CEMENT
- MORTAR CEMENT
- WATERPROOFING-PAINT

Concrete Steps
Septic Tank Lids
Cement Drain Tile
Ornamental Products

Morehead Block & Tile Co., Inc.

Highway 70 West
Phone 6-3970

Stella Postoffice Opened in 1892

By A. D. ENNETT

(Editor's Note: The following is a summary on the history of Stella presented at the meeting of the County Historical Society Saturday. Mr. Ennett has long been a resident of the western part of the county where Stella is located).

Stella postoffice was opened in 1892. Prior to this time, the settlement was known as Barkers Bridge. Before the time of Barkers Bridge, there was a local ferry, connecting the two counties of Carteret and Onslow.

The Sabistons seem to have been the earliest settlers of prominence in the area.

A Doctor Barker, of English parentage, married a Miss Sabiston, and this was the beginning of the Barker family at Stella, about year of 1880.

Naval Stores Trade There was some very early trade in naval stores, carried by sail boat to Swansboro, which for a long time was the principal naval stores depot, for eastern North Carolina, second only to Wilmington, along the entire North Carolina coast.

Cotton was an early commercial

crop. Its importance was probably emphasized by the rather large Negro population, plus the fertile soil, well drained by the White Oak River, on whose bank the village of Stella stands.

Like most places in the South at this time, the motive power for ginning cotton, was supplied by the same faithful farm animal, that pulled the plow, in cultivating it.

About 1890 the White Oak River Corp. was formed, for the purpose of manufacturing lumber from the near virgin forests of pine, growing along the banks of White Oak River.

Northerners Man Plant A Captain K. E. Terry hailing from Boston, Mass., was general superintendent of the plant, and he brought with him a number of northern men to man the mill, several of whom married and remained in Carteret, though Captain Terry returned after closing of mill. Truckner and Kuhn were among the names of those remaining.

For about three years Stella enjoyed a period of great prosperity. "Logging" was the order of the day. A large Negro population

near Long Point plantation just above Stella supplied much of the day labor. At this time, 1890, the prevailing price for day labor was 40 to 50 cents per day — and this was not an eight-hour day, but 10 to 12 hours, or "from sun to sun."

The manufactured lumber was towed down White Oak River on barges, and loaded aboard three-masted schooners that came in Bogue Inlet, and lay beside Dudley Island Channel until loaded.

Most of all this lumber was shipped by schooners to New Bedford, Mass. Stella's first steamboat, the "Nannie B" piloted by Capt. D. B. Wade of Morehead City, and Capt. Bob McLean, of Stella, as chief engineer, towed the barge of lumber down the White Oak River. The "Nannie B" was a "wood burning" steamer.

During the "boom days" of Stella, the families of Barkers, Pelletiers, Weeks, McLeans were socially prominent.

At this time, Stella boasted a hotel, dance hall and its first and only telegraph office. Operator at that time was Stacy B. Wade, now residing at Raleigh, and one time our secretary of state.

Keeping Hot Air Out Is First Step for Cool House

By DAVID G. BAREUTHER

Houses, like closed automobiles in sun-baked parking lots, can be intolerable heat traps in hot weather. The way most of our houses are designed and built, the materials used in them, even in the way we use our homes, make summer cooling a pretty complicated problem.

It seems that we just can't say "Let's air condition," unless we are prepared to pay unnecessary operating costs for a house not ready for efficient air conditioning. The color of the roof, the size and location of windows, trees in the yard, the amount of breeze through the attic, even the material we use for a shower curtain can mean many dollars in the family budget when we try to make a house cool.

Don't think a bathroom shower curtain has nothing to do with comfort in the living room. A little thing like that has baffled engineers. C. W. Nessel of Minneapolis-Honeywell, who served as an expert on the Austin, Texas, air-conditioned village, told us the other day of an interesting adventure with a wet shower curtain.

A homeowner complained that his air conditioned house was too hot during the morning, but perfectly cool in the afternoon when the outside temperature soared to 100 degrees. Tests showed abnor-

mal humidity in this house immediately after 8 a.m. Humidity, of course, has a lot to do with keeping cool. The drier the air, the warmer you can stand it.

Well, the engineers found that a canvas shower curtain remained soaked after the family's morning baths. It took all morning for the curtain to dry — by evaporating its moisture throughout the house. As soon as a nonabsorbent plastic curtain was substituted, the problem was solved.

Keeping heat out of your house is the most important step toward keeping the place cool. This is the conclusion of the University of Illinois Small Homes Council, which has issued a comprehensive bulletin on Summer Comfort.

"If the sun's rays," says this study, "can be kept off the walls, glass areas, and the roof, and if the hot outdoor air can be kept from penetrating the house, the indoor temperature can be more easily held in check. Shading the house and the use of other sun controls (roof overhangs, sun screens, louvers) are the principal means of protecting the house from the sun's rays."

Shade trees to protect windows and roof on the south and west sides of a house are stressed in another booklet "Practical Pointers on Home Air Conditioning," just published by the United States Air Conditioning Corp., Minneapolis.

Tree-shaded walls are only slightly warmer than the outside air, but walls protected from the sun run temperatures of 135 degrees and more. Unshaded roof temperatures have been recorded from 140 to 180 degrees, with attic temperatures as high as 150.

So insulation and plenty of it becomes a must whether you attempt to cool your house with fans or with air conditioning. A new book, "Insulate and Air Condition Your Home," cites case studies to show that adequate insulation can reduce the first cost and operation of home air conditioning by as much as 50 per cent.

Co-authors Groff Conklin and Arthur M. Watkins advocate as much as 6-inches of mineral wool insulation in the floor of an attic. Conklin is a former builder and Watkins is an air conditioning engineer and associate editor of a leading building magazine. Their contention seems logical especially in view of the inevitable settlement encountered in loose insulating materials.

MADE-TO-MEASURE WROUGHT IRON RAILINGS & COLUMNS

Plain and fancy designs. All materials used are solid iron with rust resistant finish.

—FREE ESTIMATES—

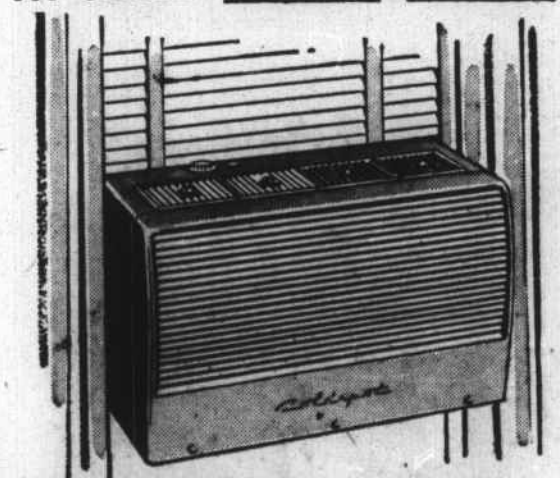
MICRO MACHINE CO.

Phone 6-4919
Located 6 Miles West of Morehead City, Highway 24

SEARS CATALOG SALES OFFICE

HIGHER CAPACITY COOLING

AT SEARS LOWEST PRICES!



1955 Coldspot 3/4 H. P. Room AIR CONDITIONER

\$199.50

JUST \$5 DOWN

1 H.P. Coldspot Room Air Conditioner..... \$229.50
1 1/2 H.P. Coldspot Room Air Conditioner..... \$299.50
Single knob control..... For easier operation
Beautiful neutral finish harmonizes with any home
Don't let hot summer nights rob you and your family of sleep...
Just dial your own climate with this Coldspot—its that easy!
Coldspot cools room off in a jiffy with just a flick of a switch. "Air-director" louvers blow air away from you, keeping you free from drafts... you awaken fresh, feeling good. Fiberglass filter is easy to replace... keeps the air you breathe constantly pure. Install this Coldspot yourself today... comes with easy installation kit...
Tonight, enjoy the luxury of Coldspot air conditioning.

Phone 6-4104 for an appointment or further information.

Satisfaction guaranteed or your money back? SEARS 808 ARDENNA ST. MOREHEAD CITY

FLY PIEDMONT

Route of the Pacemakers

FOR AIR TRAVEL ANYWHERE

Call Beaufort 2-7341 For Reservations, Information.

Trusted by Travelers

Piedmont Airlines

NOW! FOR LIMITED TIME ONLY... SENSATIONAL SAVINGS ON FAMOUS SHIRLEY

ALL-STEEL CABINET SINKS

Shirley "Economy 50" Model SC-5400

BUY NOW... SAVE \$38.40
Cabinet Sink Complete with Trim... \$119.95
Spray Kit... \$ 7.95
Total Value \$127.90
FOR BOTH YOU PAY ONLY \$89.50

Shirley "Princess 42" Model SC-4201 R/L

BUY NOW... SAVE \$43.40
Cabinet Sink Complete with Trim... \$119.95
Spray Kit... \$ 7.95
Total Value \$127.90
FOR BOTH YOU PAY ONLY \$134.50

FREE
This Regular Value \$795 SPRAY KIT with Purchase of any one of 3 models shown here

Shirley "Holiday 66" Model SC-6600

PRICES ARE DOWN VALUES ARE UP!

BUY NOW... SAVE \$38.40
Cabinet Sink Complete with Trim... \$119.95
Spray Kit... \$ 7.95
Total Value \$127.90
FOR BOTH YOU PAY ONLY \$99.50

Regular Shirley Quality, Wonderful Shirley Features

These sparkling Shirley beauties are regular Shirley quality through and through. Their rugged, gun-welded steel construction... finest quality, durable, acid-resisting porcelain enameled steel sinks... longer-lasting baked-on synthetic enamel cabinet finish... all these assure years of trouble-free service in your kitchen. In addition, you'll love their many convenient, work-saving features. And you can complete your kitchen with matching Shirley base and wall cabinets... a unit-at-a-time, or all at once. Never before have you had an opportunity like this—the world's finest porcelain-steel sinks at these amazing prices! Come see 'em now... because the time is limited!

SOLD ON EASY TERMS

BEAUFORT HARDWARE CO., INC.

MERRILL BLDG. PHONE 2-4686 BEAUFORT, N. C.